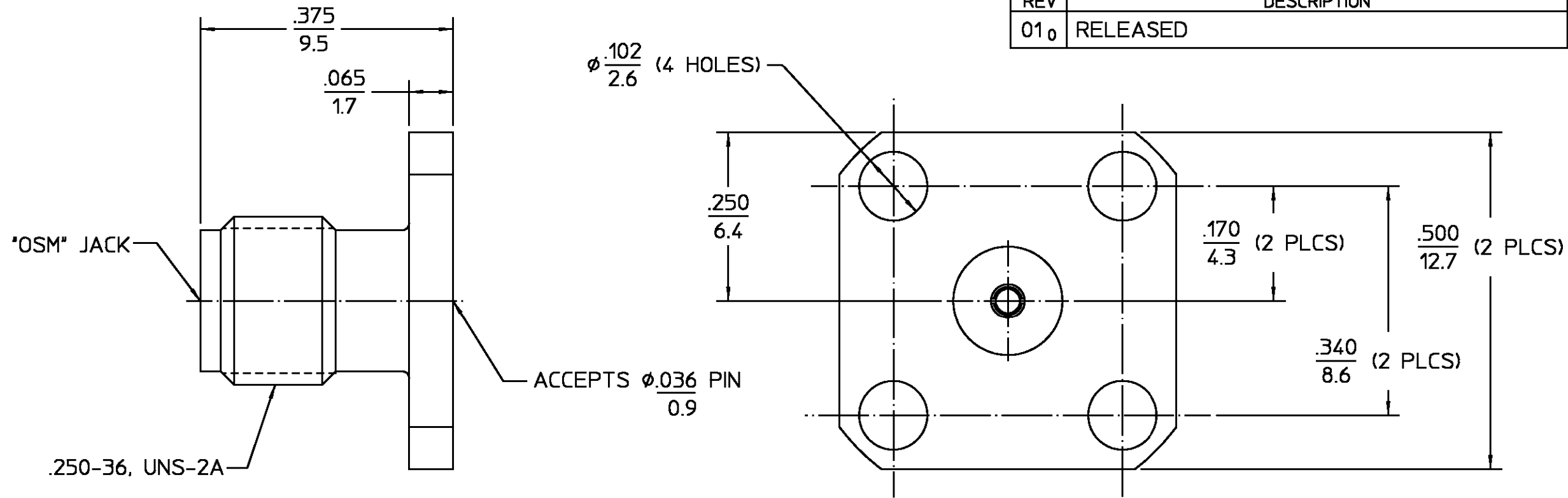


REVISIONS			
REV	DESCRIPTION	DATE	APPROVED
010	RELEASED	6/12/97	<i>RA</i>



ELECTRICAL	MECHANICAL	ENVIRONMENTAL			
Nominal Impedance (Ohms) <u>50</u>	Interface Dimensions MIL-STD-348A, Fig. <u>310-2</u>	Temperature Rating <u>-65°C to +165°C</u>	HOUSING	STAINLESS STEEL PER ASTM-A484 AND ASTM-A582, TYPE 303	PASSIVATE PER QQ-P-35
Frequency Range (GHz) DC to <u>18.0</u>	Recommended Mating Torque <u>N/A</u>	Vibration MIL-STD-202, Method 204, Condition D	DIELECTRIC	PTFE FLUOROCARBON PER ASTM-D-1457	N/A
Volt Rating (VRMS MAX) @ Sea Level <u>335</u>	Mating Characteristics: Insertion (MAX Lbs) <u>3.0</u>	Shock MIL-STD-202, Method 213, Condition I	CENTER CONTACT	BERYLLIUM COPPER PER ASTM-B-196 OR ASTM-B-197, ALLOY C17300, CONDITION H	GOLD PLATE PER MIL-G-45204
VSWR <u>1.04 +.004f</u>	Withdrawal (MIN Oz) <u>1.0</u>	Thermal Shock MIL-STD-202, Method 107, Condition C, Except High Temp 200°C	COMPONENT	MATERIAL	FINISH
Insertion Loss (dB MAX) <u>.03√f(GHz)</u>	Force to Engage and Disengage (In-Lbs MAX) <u>2.0</u>	Moisture Resistance MIL-STD-202, Method 106	UNLESS OTHERWISE SPECIFIED DIMENSIONS ARE IN INCHES		
RF Leakage (dB MIN) <u>-(100-f(GHz))</u>	Center Contact Captivation: Axial (Lbs) <u>6.0</u>	Corrosion - MIL-STD-202, Method 101, Condition B, 5% salt spray	FRAC. ± 1/64	DEC. ±.005	ANGLES ± 1°
Corona, 70,000 Ft (VRMS MIN) <u>250</u>	Cable Retention: Axial Force (Lbs) <u>N/A</u>		DRAWN BY <i>ADP</i> DATE <u>5/7/97</u>		
Dielectric Withstanding Voltage (VRMS MIN) @ Sea Level <u>1,000</u>	Torque (In-Oz) <u>N/A</u>		CHECKED BY <i>RA</i> DATE <u>6/12/97</u>		
Contact Resistance (Milliohms MAX): Center Contact <u>2.0</u>	Weight (Grams) <u>TBD</u>		APPD BY <i>RA</i> DATE <u>6/12/97</u>		
Outer Contact <u>2.0</u>			AMP Incorporated 140 Fourth Avenue Waltham, MA 02451-7599		
Cable to Housing <u>N/A</u>			TITLE "OSM" JACK 4 HOLE FLANGE ACCEPTS 0.036 PIN		
RF High Potential @ Sea Level (VRMS MIN @ 5 MHz) <u>670</u>			NO. AP. <u>N/A</u>		
LR.(Megohms MIN) <u>10,000</u>			SIZE <u>B</u>	CODE IDENT NO. <u>26805</u>	2052-3358-02
			SCALE <u>6:1</u>		REV <u>010</u>
					SHEET 1 OF 1

.XXX = in
XX.X = mm (REF)

These drawings and specifications are the property of M/A COM Interconnect Div. and shall not be reproduced or copied or used in whole or in part as the basis for the manufacture or sale of item(s) without written permission.

CUSTOMER DRAWING

AMP PART # 1052643-1
SHEET 1 OF 1 REV A

单击下面可查看定价，库存，交付和生命周期等信息

[>>TE Connectivity\(泰科\)](#)