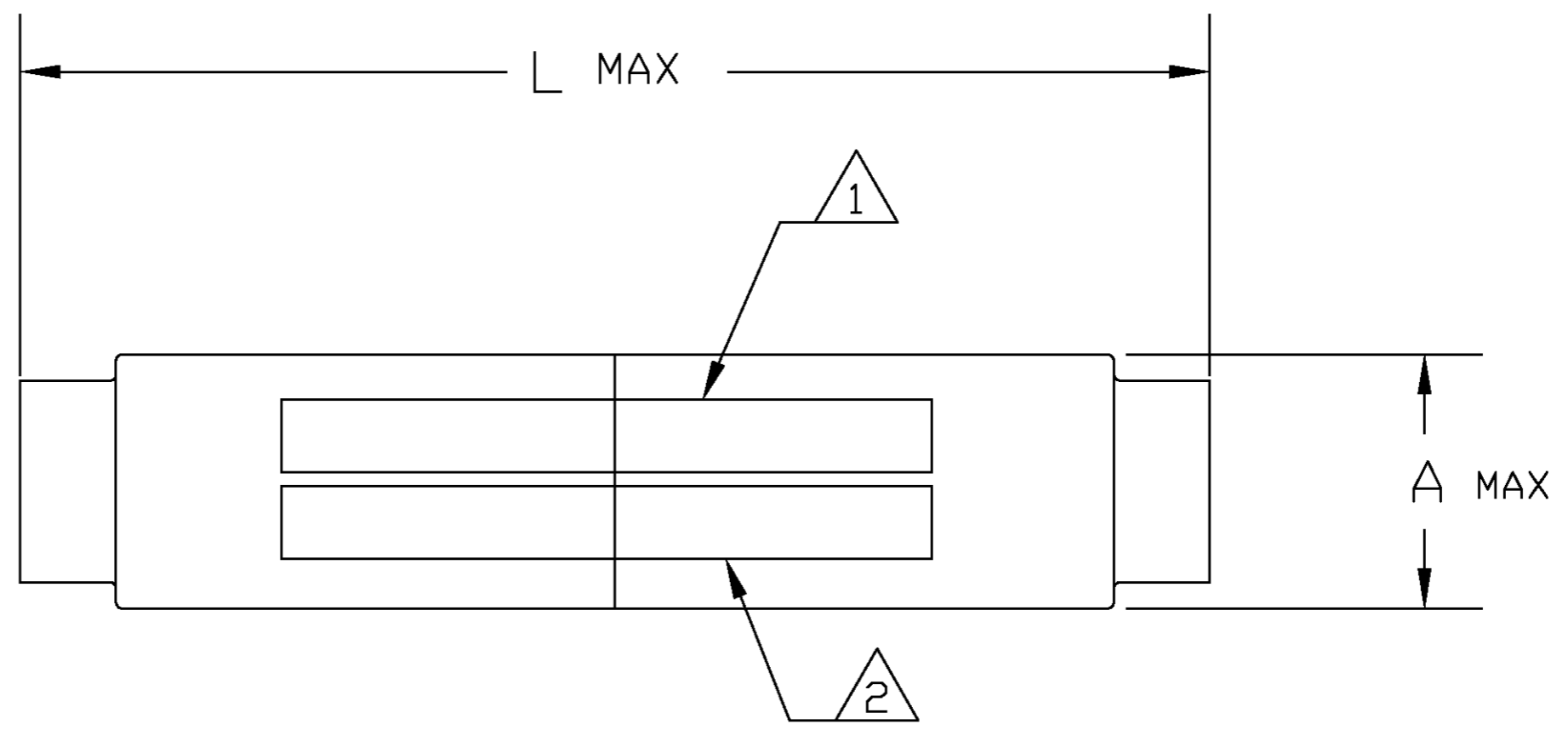
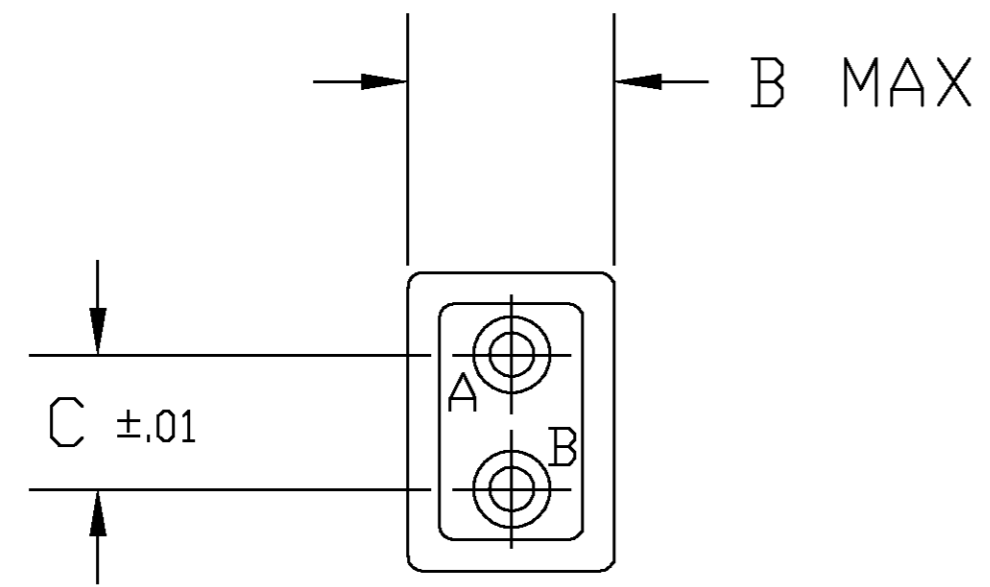


THIS DRAWING IS UNPUBLISHED. RELEASED FOR PUBLICATION .19		
© COPYRIGHT 19 BY AMP INCORPORATED. ALL RIGHTS RESERVED.		
DESCRIPTION	MATERIAL	FINISH
GROMMET	FLUOROSILICONE	MIL-T-81714,CLASS D, BLUE
SPLICE ASSEMBLY HOUSING	EPIALL TYPE 1908	MIL-T-81714,CLASS D, BLACK
TUBE SHRINK	PER MIL-1-23053/8	COLOR TRANSPARENT
CONTACT FEMALE SOCKET	BERYLLIUM COPPER PER ASTM-B194	GOLD PLATE PER MIL-G-45204
RETENTION CLIP	BERYLLIUM COPPER PER ASTM-B194 OR SST PER QQ-S-766	NONE
CONTACTS PIN	COPPER ALLOY PER MIL-C-39029/1	GOLD PLATE PER MIL-G-45204

LOC	DIST	REVISIONS					
DF	A0	P	LTR	DESCRIPTION	DATE	DWN	APVD
		B		REV PER 0600-5711-96	2-98	TT	DM



	1.552	.13	.275	.400	△3	CLASS D		22	592588-6
	1.552	.13	.275	.400	△4	CLASS D		20	592588-5
	1.922	.18	.300	.500	△5	CLASS D		16	592588-4
SUPSD BY -4	1.922	.18	.300	.500	△5	CLASS D	M81714/12-16D-1	16	592588-3
SUPSD BY -5	1.552	.13	.275	.400	△4	CLASS D	M81714/12-20D-1	20	592588-2
SUPSD BY -6	1.552	.13	.275	.400	△3	CLASS D	M81714/12-22D-1	22	592588-1
	L	C	B	A	REMARKS	MIL-T-81714 CLASS	MILITARY/CUSTOMER PART # △3	SIZE	

- △1 MARK WIRE SPLICE MARKED WITH "AMP", AMP PART NO., AND DATE CODE AT APPROXIMATE AREA SHOWN.
- △2 MARK CUSTOMER/MILITARY PART NUMBER MARKED AT APPROXIMATE AREA SHOWN.
- △3 A QUANTITY OF 4 M39029/1-100 PIN CONTACTS ARE SUPPLIED WITH WIRE SPLICE.
- △4 A QUANTITY OF 4 M39029/1-101 PIN CONTACTS ARE SUPPLIED WITH WIRE SPLICE.
- △5 A QUANTITY OF 4 M39029/1-102 PIN CONTACTS ARE SUPPLIED WITH WIRE SPLICE.

THIS DRAWING IS A CONTROLLED DOCUMENT

DATE: 18FEB98
 DWT: T. THOMPSON
 CHK: D. MILLER
 APVD: D. MILLER
 PRODUCT SPEC: -
 APPLICATION SPEC: -
 WEIGHT: -
 CUSTOMER DRAWING

TOLERANCES UNLESS OTHERWISE SPECIFIED:
 0 PLC ±-
 1 PLC ±-
 2 PLC ±-
 3 PLC ±.005
 4 PLC ±-
 ANGLES ±-
 FINISH -

SCALE: 1:1
 SHEET: 1 OF 1
 REV: B

AMP Incorporated
 Harrisburg, PA 17105-3608A

WIRE SPLICE ASSY, T.J, MILITARY, CLASS D

SIZE: A2
 CAGE CODE: 00779
 DRAWING NO: C=592588

单击下面可查看定价，库存，交付和生命周期等信息

[>>TE Connectivity\(泰科\)](#)