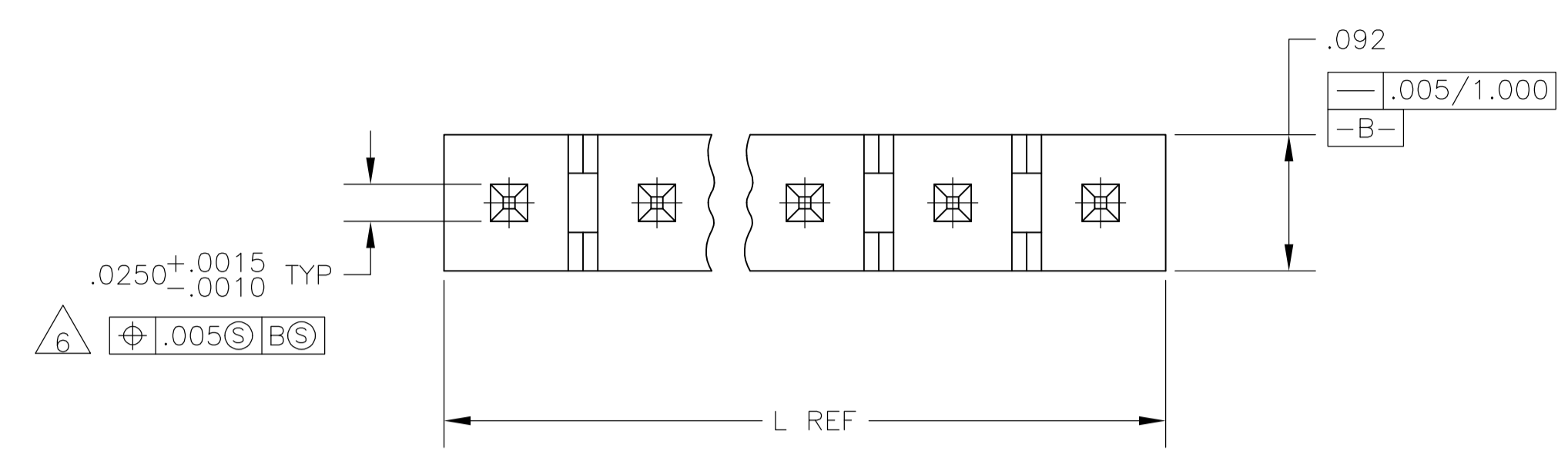
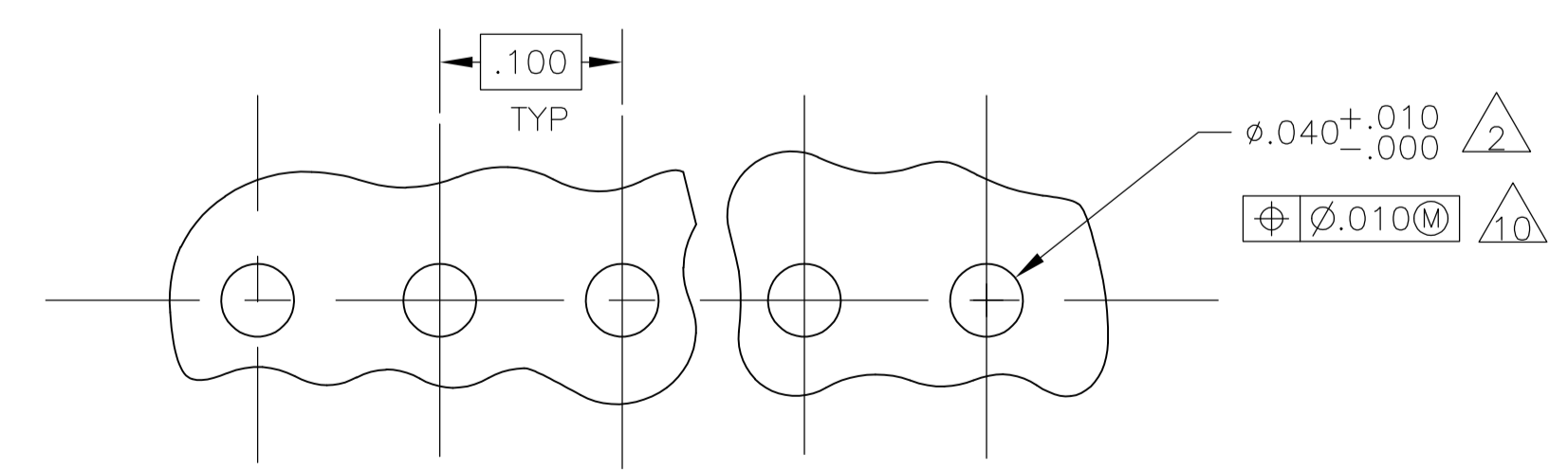
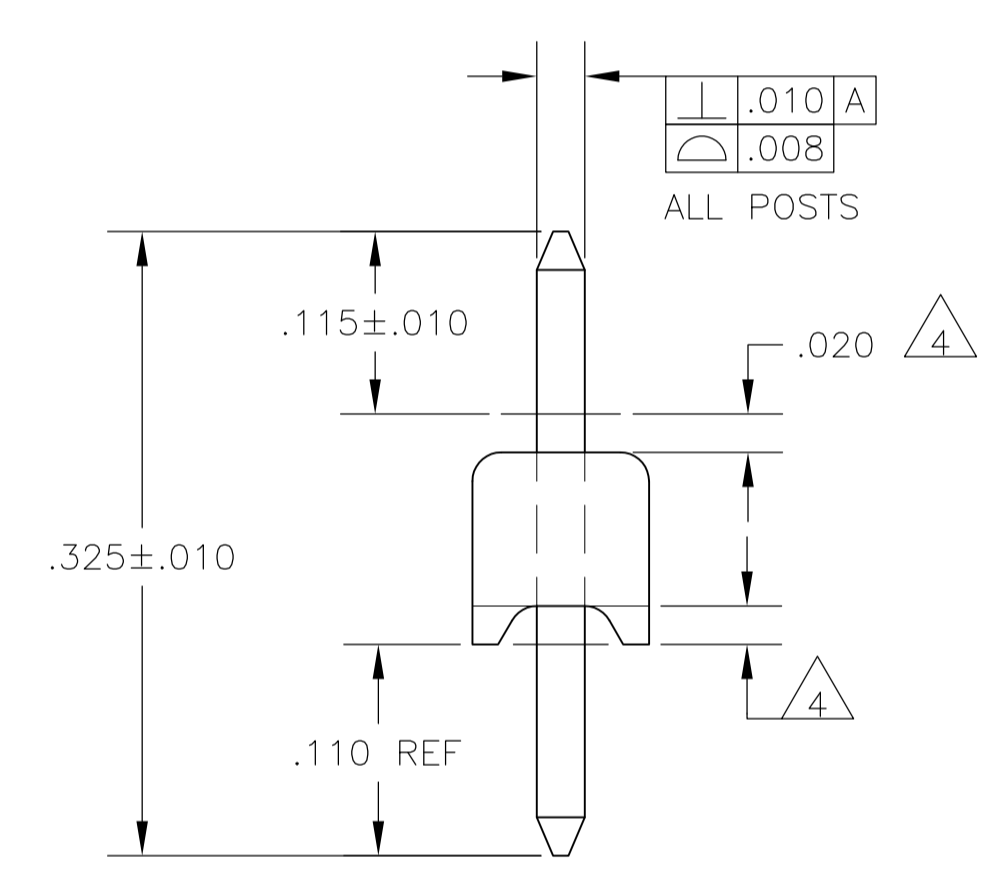
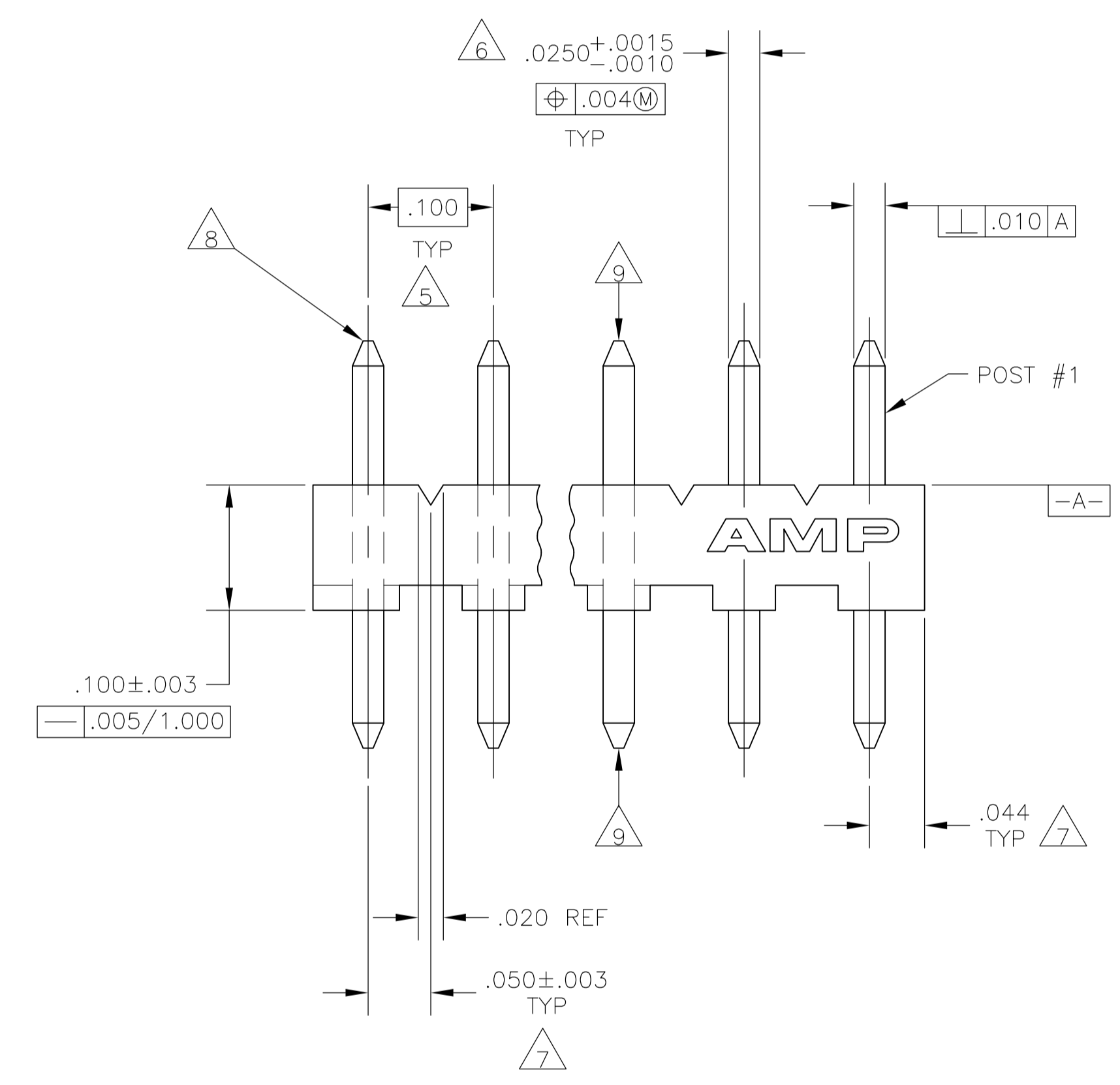


REVISIONS				
REV	DESCRIPTION	DATE	BY	APP'D
F	REVISED PER ECR-18-003423	29MAR2018	BDA	SG



- 1 MATERIAL:
BASE: THERMOPLASTIC POLYESTER, UL 94V-0 (NATURAL).
POST: COPPER ALLOY (TIN OR TIN-PLATED, .000150" MIN THICK-SEE PART NUMBER TABLE FOR DETAILS).
- 2 ONE HOLE MAY BE UNDERSIZED (.032-.035 DIA) FOR ASSEMBLY RETENTION DURING WAVE SOLDERING.
- 3 PARTS MUST COMPLY WITH AMP SOLDERABILITY SPEC 109-11-2.
- 4 PLASTIC AROUND POST PERMISSIBLE IN THIS AREA ONLY.
- 5 DIMENSION APPLIES WHEN HEADER IS HELD FLAT.
- 6 MEASURED AT -A-
- 7 COORDINATE DIMENSION APPLIES FROM CENTER OF ACTUAL FEATURE.
- 8 RADIUS AT TIP PERMITTED, BOTH ENDS.
- 9 POST MUST WITHSTAND 3.0 LB MIN AXIAL FORCE IN BOTH DIRECTIONS WITHOUT DISLODGING.
- 10 SOLDER SIDE OF BOARD IS SHOWN.
- 11 AMP LOGO MAY OR MAY NOT APPEAR ON MOLDING HOUSING.
- 12 OBSOLETE PARTS



RECOMMENDED MOUNTING HOLE PATTERN FOR .063 THICK P.C. BOARD

IN	MM	IN	MM
.032	0.81	1.000	25.40
.0250	0.635	.325	8.26
.025	0.64	.115	2.92
.020	0.51	.110	2.79
.010	0.25	.100	2.54
.008	0.20	.092	2.34
.005	0.13	.063	1.60
.004	0.10	.050	1.27
.003	0.08	.044	1.12
.0015	0.038	.040	1.02
.0010	0.025	.035	0.89
.000150	0.0038		
IN	MM	IN	MM

CONVERSION TABLE

FINISH	NO. OF POSTS	IN	MM	NO. OF CIRCUITS	PART NUMBER
TIN	9	.888	22.56	9	3-644700-9
TIN-LEAD	9	.888	22.56	9	644700-9

12 SUPERSEDED

THIS DRAWING IS A CONTROLLED DOCUMENT.		DIN D VISWESWARA 07JULY2005		TE Connectivity Ltd.	
DIMENSIONS: INCHES		TOLERANCES UNLESS OTHERWISE SPECIFIED:		NAME	
0 PLC ± -		1 PLC ± -		MTA-100 HEADER ASSEMBLY, NARROW, .025 SQ POST-STRAIGHT, TIN OR TIN-LEAD	
1 PLC ± -		2 PLC ± -		PRODUCT SPEC	
2 PLC ± -		3 PLC ± -		APPLICATION SPEC	
3 PLC ± -		4 PLC ± -		SIZE	
4 PLC ± -		ANGLES ± -		CAGE CODE	
MATERIAL		FINISH		DRAWING NO	
1		1		A1 00779 C=644700	
CUSTOMER DRAWING		SCALE		SHEET	
		10:1		1 OF 1	
				REV F	

单击下面可查看定价，库存，交付和生命周期等信息

[>>TE Connectivity\(泰科\)](#)