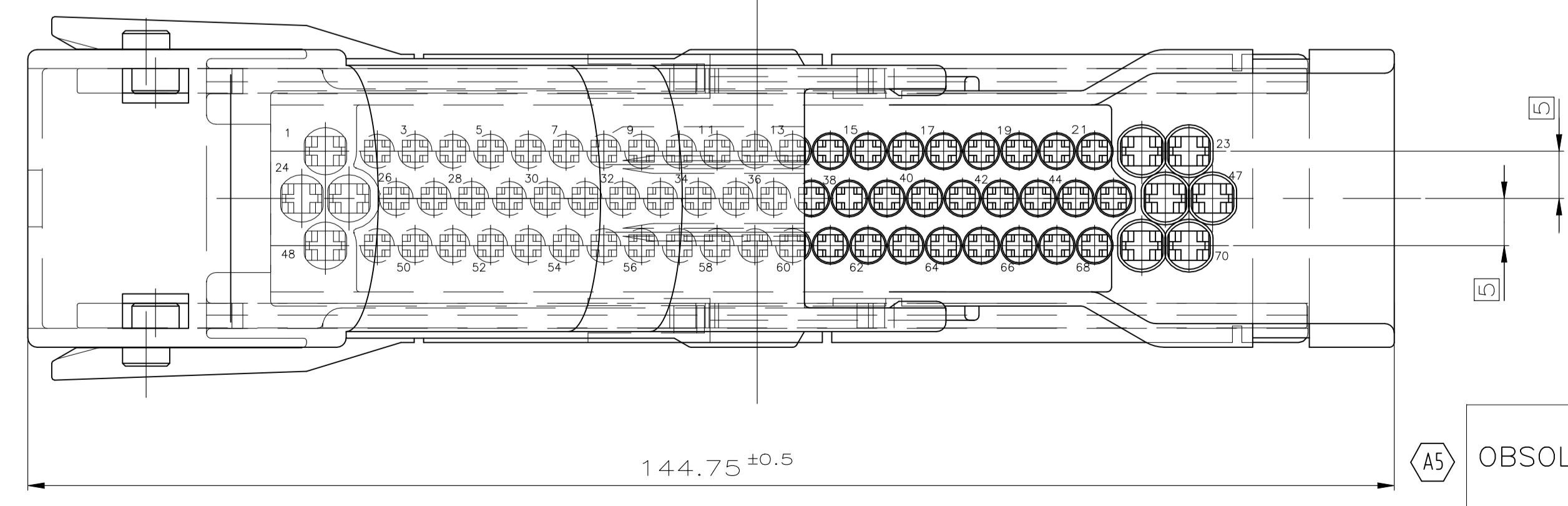
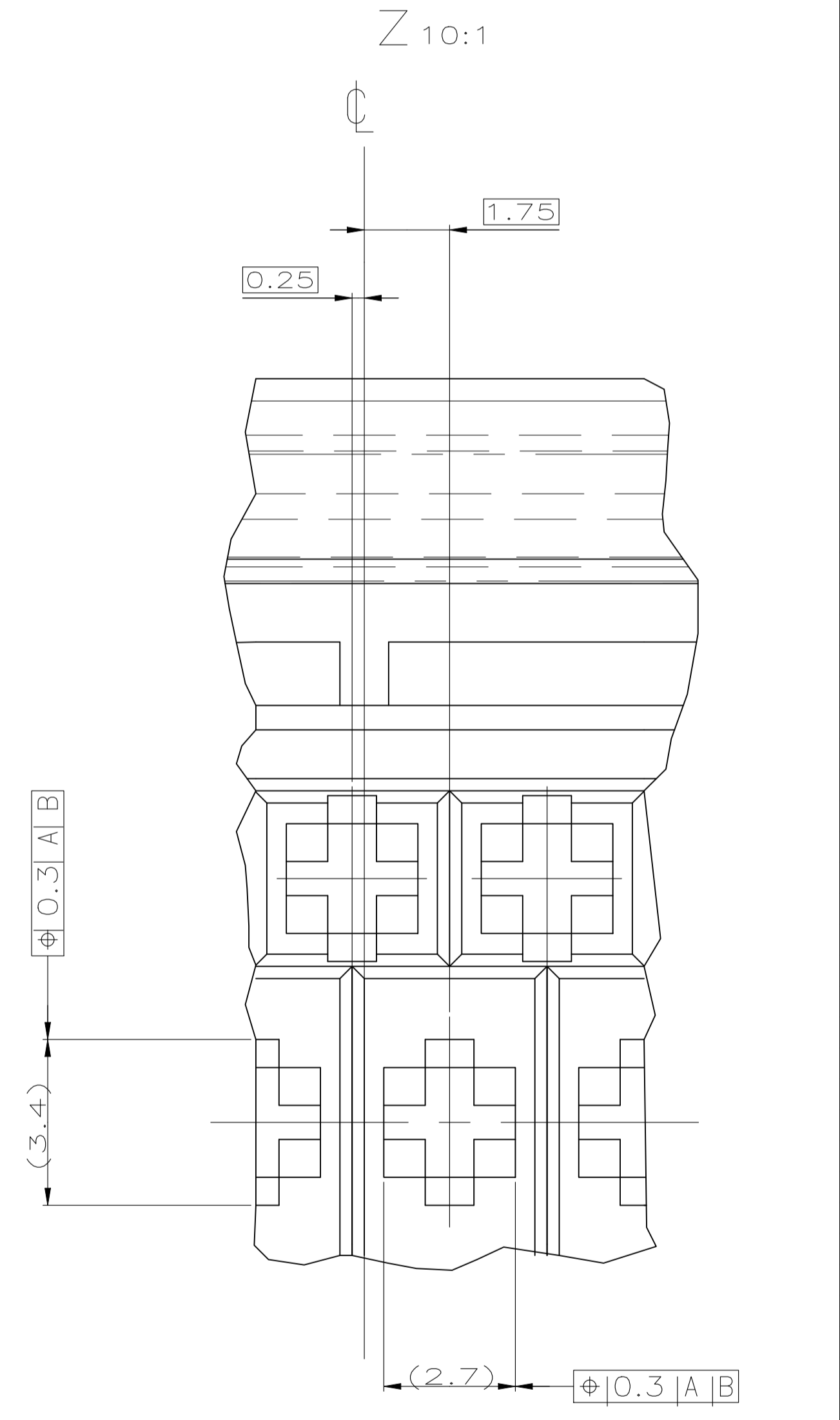
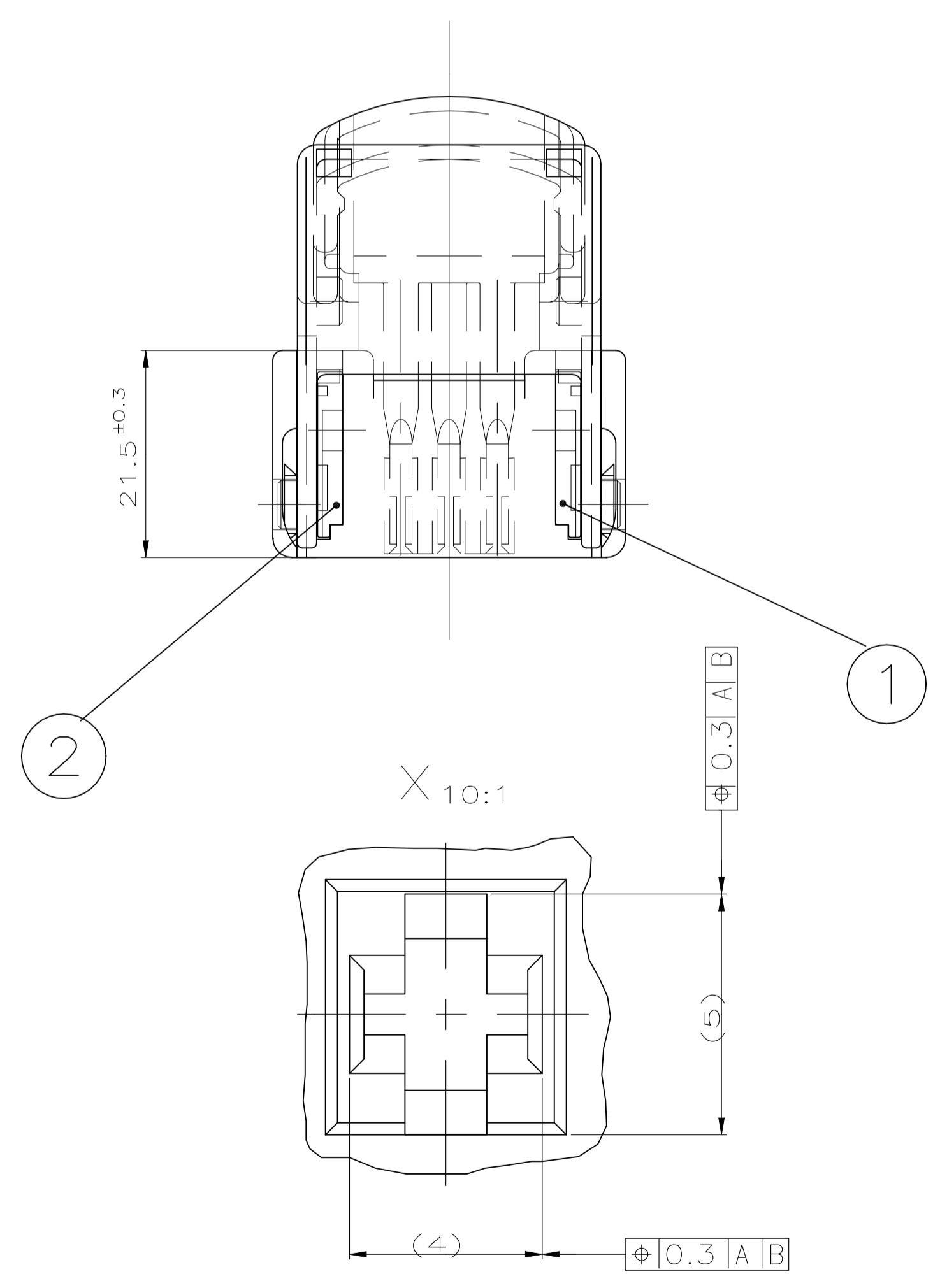


Bemerkungen
NOTES

1 Zulässiger Einfall 21.7 mm
COLLAPS ALLOWABLE 21.7 mm

2 Zulässiger Einfall 29.4 mm
COLLAPS ALLOWABLE 29.4 mm



CUSTOMER PART NO.	TE CONNECTIVITY PART NO.	REV.	PCS.	MATERIAL	SURFACE COLOR	DESCRIPTION	ITEM NO.
OBSOLETE							
	2-968879-1	A	1	PBT-GF30	GREY	70 POS. REC. HSG., CODE B1	5
			1	PBT-GF30	BLACK	LOCKING CLIP	3
			1	PBT-GF30	RED	SLIDE (LEFT POSITION)	2
			1	PBT-GF30	RED	SLIDE (RIGHT POSITION)	1
	1-968879-1	A	1	PBT-GF30	BLACK	70 POS. REC. HSG., CODE A1	4
			1	PBT-GF30	BLACK	LOCKING CLIP	3
			1	PBT-GF30	RED	SLIDE (LEFT POSITION)	2
			1	PBT-GF30	RED	SLIDE (RIGHT POSITION)	1

THIS DRAWING IS A CONTROLLED DOCUMENT.
DIESE ZEICHNUNG IST EIN KONTROLLIERTES DOKUMENT.

DIMENSIONS: MASSENHEITEN: mm

TOLERANCES UNLESS OTHERWISE SPECIFIED: ALLEGRENTOLANZEN

MATERIAL: FINISH/OBERFLÄCHE/FARBE

DIN	A. MACHILL	07-APR-97	 TE Connectivity
CHK	M. KRESSMANN	08-APR-97	
APVD			
PRODUCT SPEC	70 POS. MIXED REC. HOUSING ASSY. (60 x MT2 + 10 x JPT)		
APPLICATION SPEC	SIZE	CAGE CODE	DRAWING NO.
VERARBEITUNGSSPEZ.	A1	00779	968879
WEIGHT	SCALE		RESTRICTED TO
GEWICHT	2:1		MUR FÜR
CUSTOMER DRAWING / KUNDENZEICHNUNG			
SHEET		OF	REV
BLATT		VON	
1		1	A5

单击下面可查看定价，库存，交付和生命周期等信息

[>>TE Connectivity\(泰科\)](#)