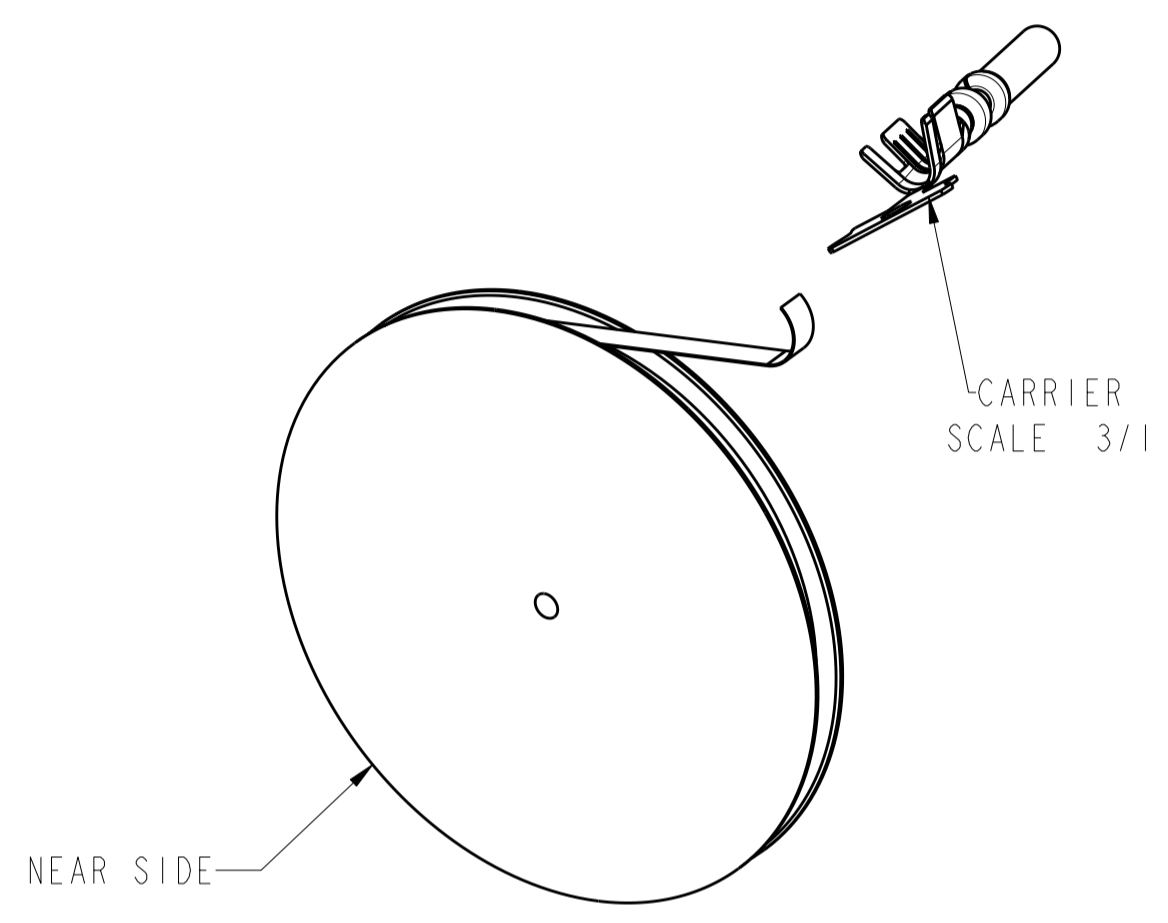
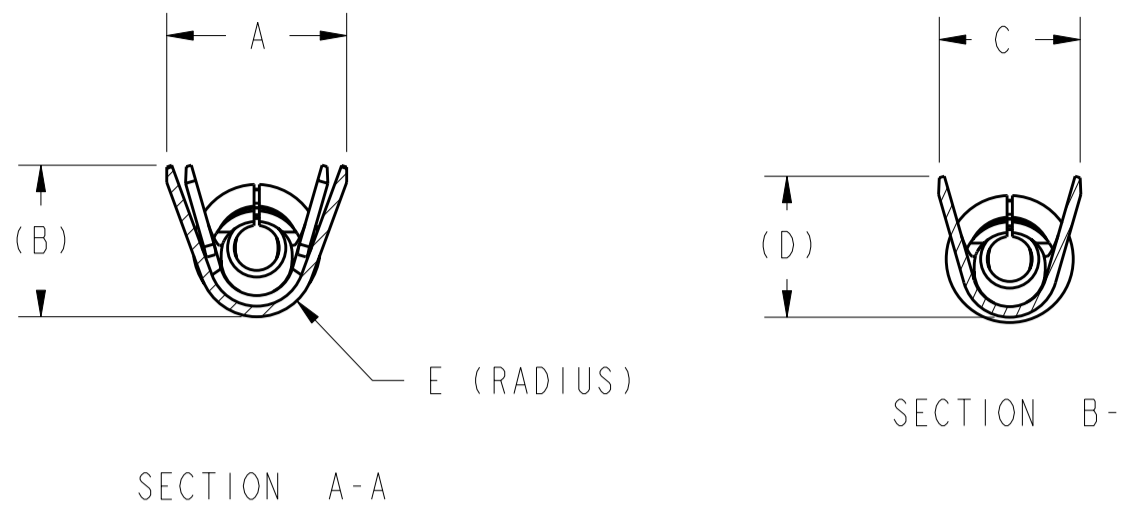
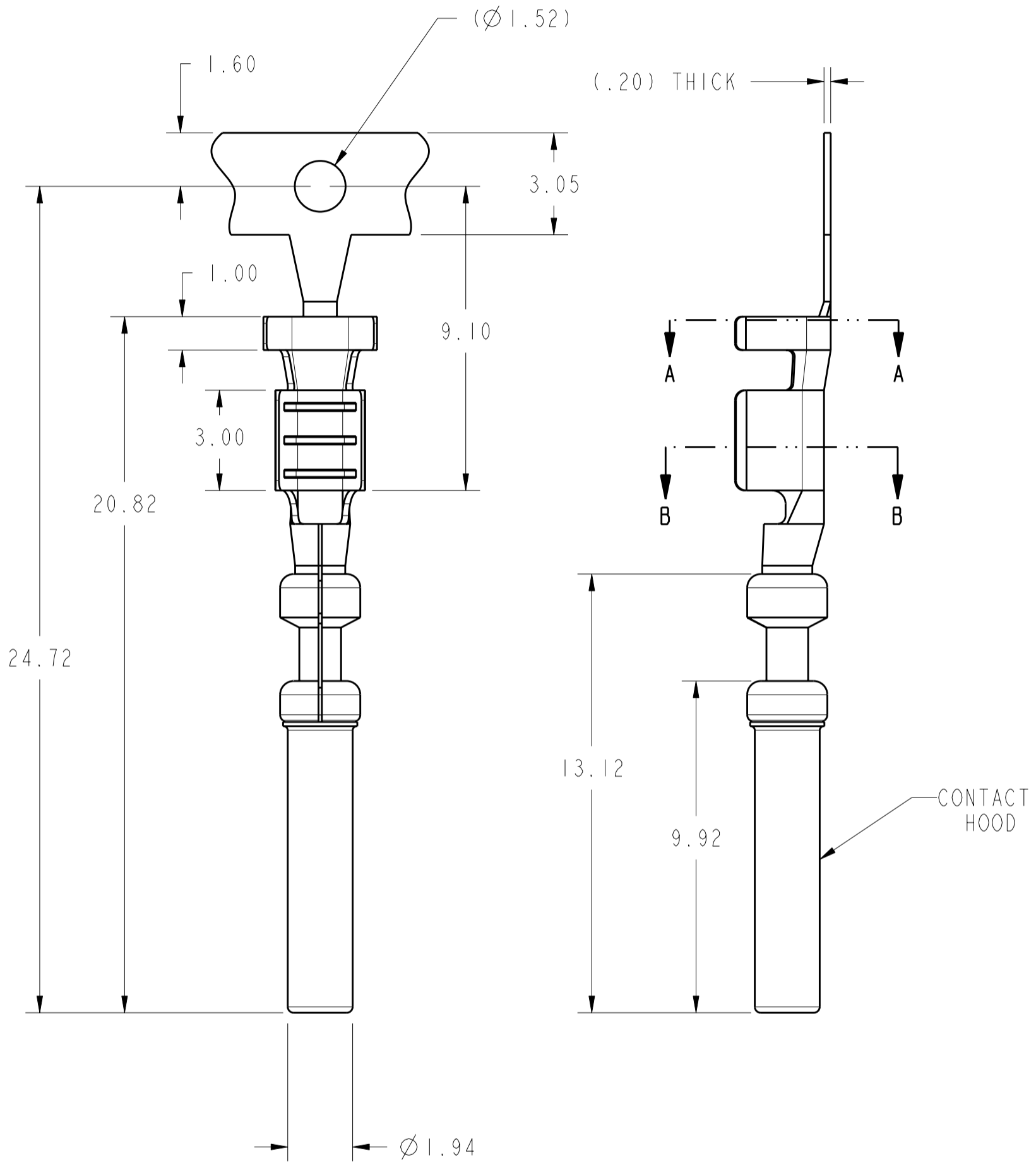


THIS DRAWING IS UNPUBLISHED. RELEASED FOR PUBLICATION 20  
 © COPYRIGHT 20 ALL RIGHTS RESERVED.

| LOC |     | DIST                      |           | REVISIONS |      |  |  |
|-----|-----|---------------------------|-----------|-----------|------|--|--|
| P   | LTR | DESCRIPTION               | DATE      | DWN       | APVD |  |  |
|     | CI  | REVISED PER ECO-11-005030 | 30APR2011 | RK        | HMR  |  |  |



PARTS ARE REELED WITH SADDLES POINTING OUT AND THE CARRIER ON THE NEAR SIDE. CONTACTS ARE TO HAVE A SULFUR FREE PAPER BETWEEN COILS. THERE ARE 7000 TERMINALS PER REEL. THE TERMINALS ARE ON A 8.0 MM SPACING.



- NOTE(S):
- BASE MATERIALS:  
CONTACT - HIGH CONDUCTIVITY COPPER ALLOY.  
HOOD - STAINLESS STEEL.
  - PLATING:  
CONTACT - NICKEL UNDERPLATE, TIN PLATING IN CRIMP AREA.  
GOLD PLATE IN ELECTRICAL ENGAGEMENT AREA.  
HOOD - PASSIVATED OR GOLD PLATED (SEE TABLE).
  - SEE TABLE FOR RECOMMENDED CRIMP SPECIFICATIONS AND APPLICATION TOOLING.

| SUGGESTED CRIMP SPECIFICATIONS AND APPLICATION TOOLING |             |             |                      |             |
|--|-------------|-------------|----------------------|-------------|
| AWG WIRE SIZE  | 20          | 18          | 16                   | 14          |
| RECOMMENDED INSULATION DIAMETER RANGE (MIN/MAX)        | 1.77 / 2.46 | 1.77 / 2.46 | 2.18 / 2.92          | 2.18 / 2.92 |
| RECOMMENDED CONDUCTOR CRIMP HEIGHT                     | 1.00 ±.05   | 1.09 ±.05   | 1.18 ±.05            | 1.45 ±.05   |
| RECOMMENDED CONDUCTOR CRIMP WIDTH                      | 1.77        | 1.86        | 1.94                 | 2.20        |
| STRIP LENGTH   | 4.20 ± 0.25 | 4.20 ± 0.25 | 4.20 ± 0.25          | 4.20 ± 0.25 |
| TE CONNECTIVITY HAND TOOL PART NUMBER                  | 1456088-1   | 1456088-1   | 1456088-1 OR 91367-1 | 91367-1     |
| MINIMUM CRIMP TENSILE STRENGTH (LBS)                   | 19          | 24          | 28                   | 35          |

|     |      |      |     |      |                 |       |                        |                             |
|-----|------|------|-----|------|-----------------|-------|------------------------|-----------------------------|
| 1.6 | 3.00 | 2.78 | 2.9 | 4.10 | STAINLESS STEEL | 16-14 | 13002630102            | 1-1437284-0                 |
| 1.1 | 2.64 | 2.47 | 3.3 | 3.40 | STAINLESS STEEL | 20-18 | 13002630101            | 0-1437284-9                 |
| E   | D    | C    | B   | A    | HOOD FINISH     | AWG   | FORMER T&B PART NUMBER | TE CONNECTIVITY PART NUMBER |

THIS DRAWING IS A CONTROLLED DOCUMENT.

DIMENSIONS: mm

TOLERANCES UNLESS OTHERWISE SPECIFIED:

|        |         |
|--------|---------|
| 0 PLC  | ±       |
| 1 PLC  | ±0.1    |
| 2 PLC  | ±.13    |
| 3 PLC  | ±.050   |
| 4 PLC  | ±0.0001 |
| ANGLES | ±2      |
| FINISH |         |

STE TE Connectivity

AUTOMOTIVE SOCKET CONTACT  
20 - 14 AWG WIRE  
(1mm SYSTEM)

SIZE: A2 CAGE CODE: 00779 DRAWING NO: 1456216

SCALE: 7/1 SHEET: 1 OF 1 REV: CI

单击下面可查看定价，库存，交付和生命周期等信息

[>>TE Connectivity\(泰科\)](#)