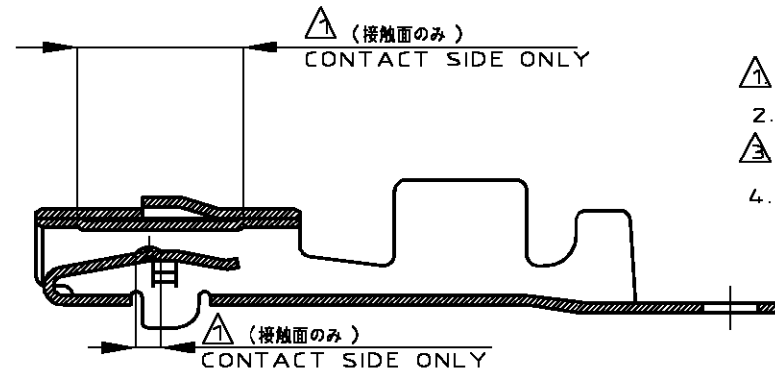
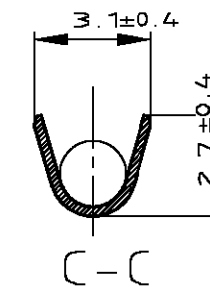
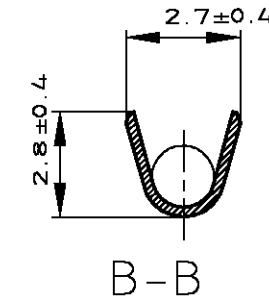
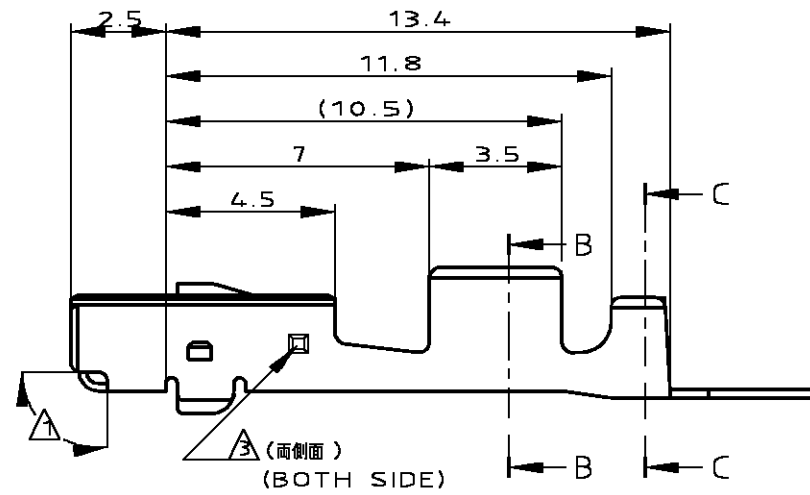
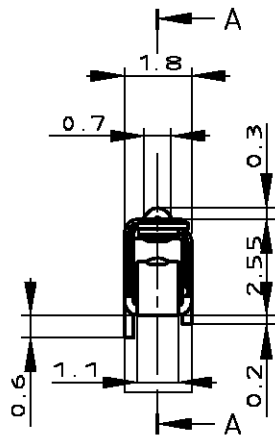
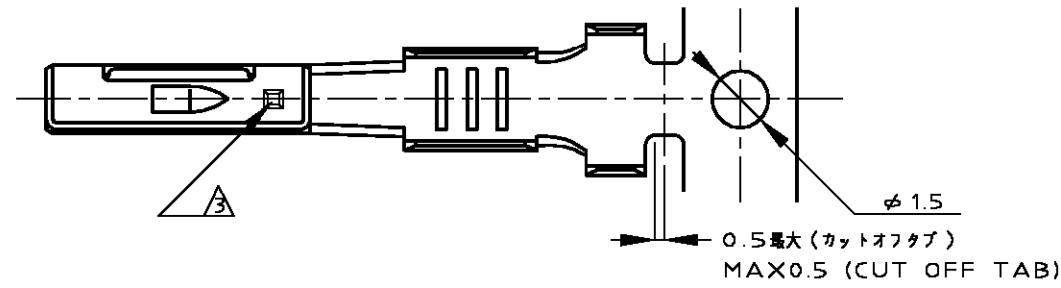


THIS DRAWING IS UNPUBLISHED. RELEASED FOR PUBLICATION
 © COPYRIGHT 01 BY TYCO ELECTRONICS CORPORATION. ALL RIGHTS RESERVED.

LOC	DIST	REVISIONS					
J	—	P	LTR	DESCRIPTION	DATE	DWN	APVD
		G1		REDRAWN WITH CHANGE fj00-0824-00	17JAN01	KF	NS



- △ (△) SELECTIVE GOLD
- 2. APPLICATION SPEC NO. 114-5159
- △ (△) GOLD PLATING DISCERNMENT STAMP
- 4. APPLICABLE PRODUCT SPEC NO.108-5359
- △ (△) 部分金めっき
- 2. 取付適用規格番号 114-5159
- △ (△) 金めっき識別用刻印
- 4. 適用製品規格番号 108-5359

A-A

179420-2	部分金めっき (SELECTIVE GOLD)	175267-2
バラ端子型番 (LOOSE PIECE CONTACT P/N)	仕上げ (FINISH)	AMP型番 (PART NUMBER)

THIS DRAWING IS A CONTROLLED DOCUMENT.		DWN K.FURUYAMA 17JAN01	Tyco Electronics AMP K.K. Kawasaki, Japan	
		CHK N.SAI 17JAN01		
DIMENSIONS: MM		APVD N.SAI 17JAN01	NAME 040 II SERIES "M" RECEPTACLE CONTACT	
TOLERANCES UNLESS OTHERWISE SPECIFIED:		PRODUCT SPEC SEE TABLE	SIZE A3	
0 PLC ± 1 PLC ±- 2 PLC ±- 3 PLC ±- 4 PLC ±- ANGLES ±3		APPLICATION SPEC SEE TABLE	CAGE CODE 00779	DRAWING NO C-175267
MATERIAL Cu ALLOY		WEIGHT 0.3g	RESTRICTED TO	
FINISH SEE TABLE		CUSTOMER DRAWING		SCALE 5:1
TOLERANCES UNLESS OTHERWISE SPECIFIED: 10 ≤ ±0.2 30 ≤ ±0.25 30 ≤ ±0.3		SHEET 1 OF 1		REV G1

单击下面可查看定价，库存，交付和生命周期等信息

[>>TE Connectivity\(泰科\)](#)