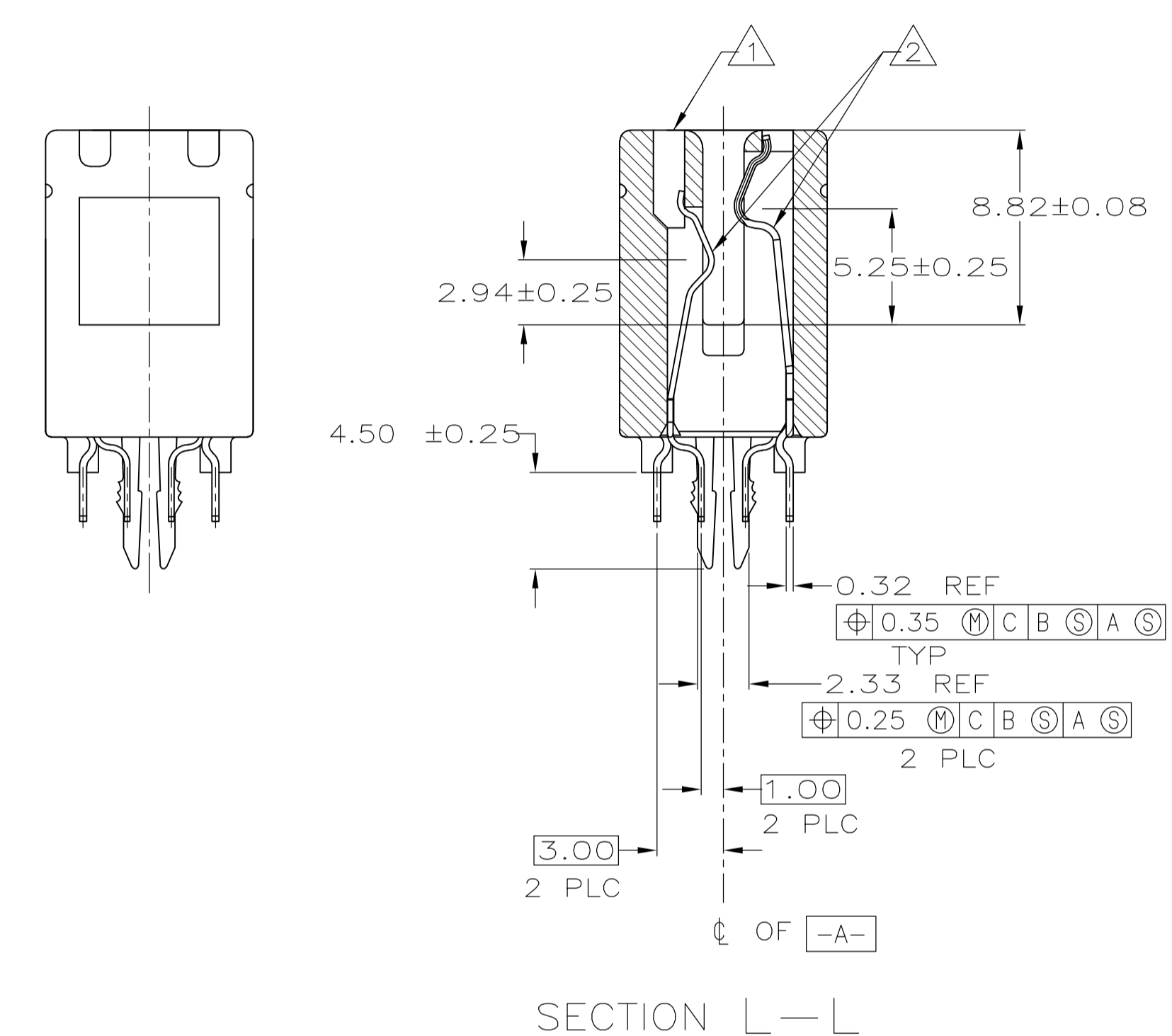
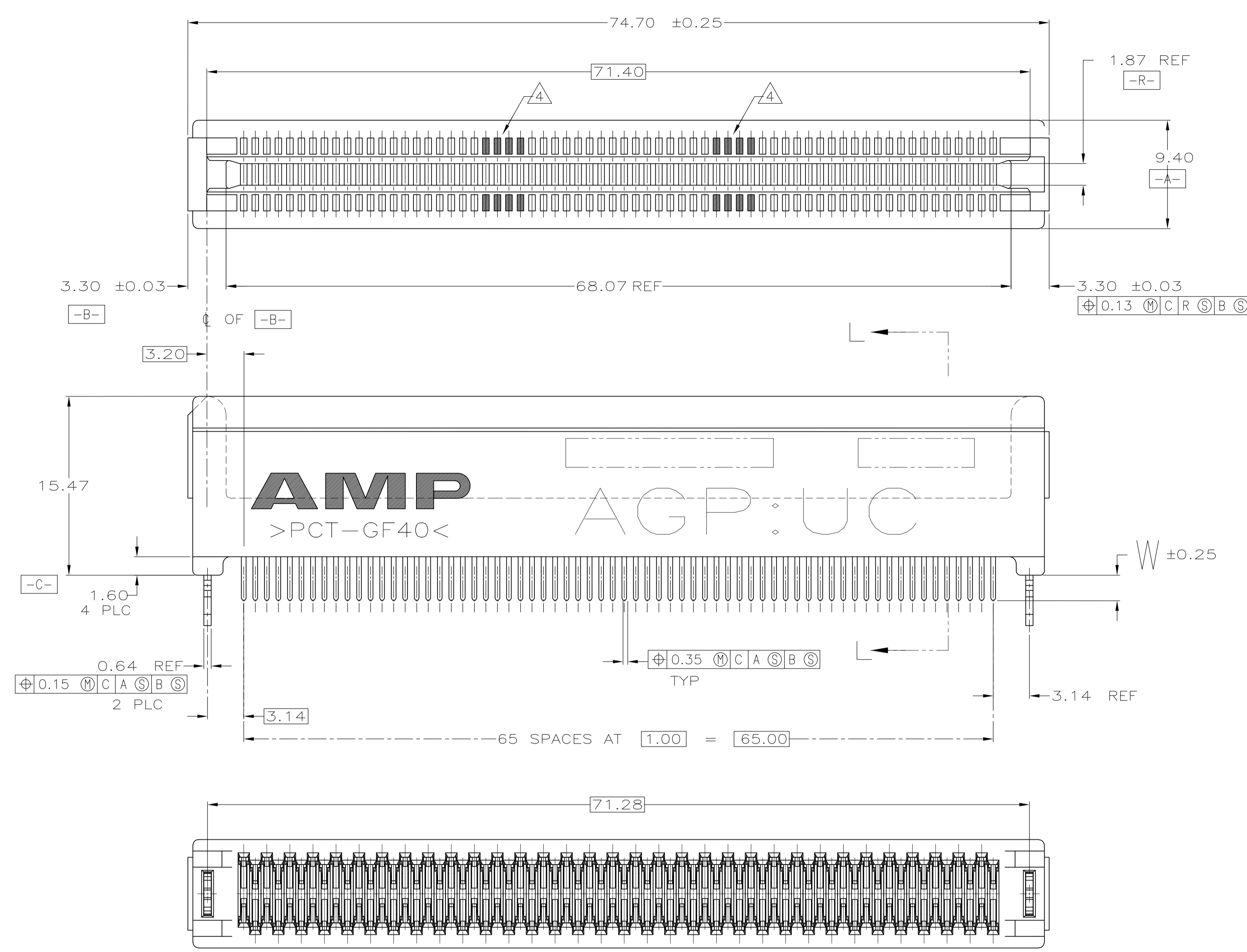
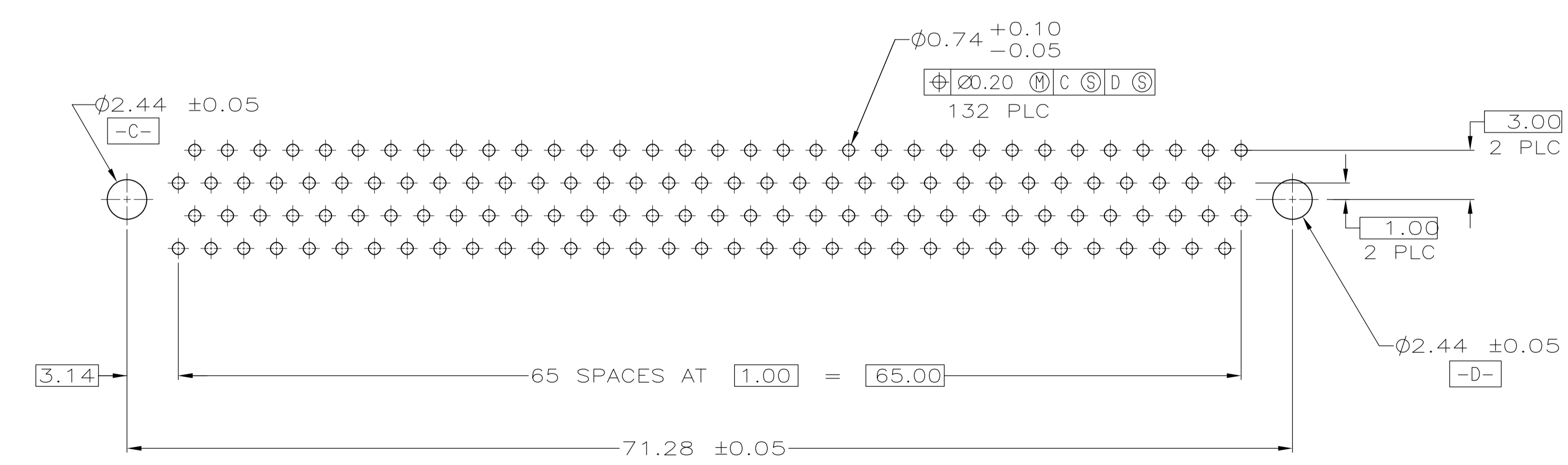


LOC		DIST		REVISIONS			
P	LTR	DESCRIPTION	DATE	OWN	APVD	DD	DD
C		REVISED PER OG51-0008-99	06APR99	RB			
D		REV PER OG51-0062-99	05/18/99	MM			
D1		REVISED ECR-09-010116	08MAY2009	AZ			
D2		REVISED PER ECO-09-020689	31AUG09	KK			



- 1 MATERIAL: HOUSING, THERMOPLASTIC, COLOR: BROWN. CONTACTS, PHOSPHOR BRONZE. HOLD-DOWNS, BRASS.
- 2 FINISH: CONTACTS, 1.27 MIN. MICROMETERS NICKEL ALL OVER, 0.38 MIN. MICROMETERS GOLD OVER NICKEL IN CONTACT AREA, 2.54 MIN MICROMETERS TIN-LEAD OVER NICKEL ON SOLDER TAILS.
- 3 REFER TO INTEL ACCELERATED GRAPHICS PORT INTERFACE SPECIFICATION FOR RECOMMENDED MATING PAD PATTERNS FOR AGP 1X, 2X AND 4X BOARDS.
- 4 SHADED CONTACT LOCATIONS ARE AT RISK OF DAMAGE DURING MATING AND UNMATING WITH AGP-1X AND AGP-2X/4X CIRCUITS.
- 5 FINISH: CONTACTS, 1.27 MIN. MICROMETERS NICKEL ALL OVER, 0.0254-0.0762 MICROMETERS GOLD OVER NICKEL IN CONTACT AREA. 2.54 MIN. MICROMETERS TIN-LEAD OVER NICKEL ON SOLDER TAILS.
- 6 OBSOLETE PARTS: OBSOLETE CIS STREAMLINING PER D.RENAUD/D.SINISI



Ø	Ø	3.18	145376-6
Ø	Ø	2.54	145376-5
Ø	Ø	3.18	145376-3
Ø	Ø	2.54	145376-2
Ø	Ø	2.16	145376-1
PLATING		W	PART NO

THIS DRAWING IS A CONTROLLED DOCUMENT.		OWN	R BROWN	6/25/98
DIMENSIONS:		CHK	D DIXON	6/25/98
TOLERANCES UNLESS OTHERWISE SPECIFIED:		APVD	V RUMINSKI	6/25/98
mm	0 PLC ±	NAME		
	1 PLC ±	PRODUCT SPEC		
	2 PLC ±0.13	APPLICATION SPEC		
	3 PLC ±	SCALE		
	4 PLC ±	SHEET		
	ANGLES ±	REV		
MATERIAL	FINISH	WEIGHT	CUSTOMER DRAWING	

AMP AMP Incorporated
 Harrisburg, PA 17105-3608

ASSEMBLY, 132 POSITION
 1mm CARD EDGE CONNECTOR

A100779
 SCALE 4:1 SHEET 1 OF 1 REV D2

单击下面可查看定价，库存，交付和生命周期等信息

[>>TE Connectivity\(泰科\)](#)