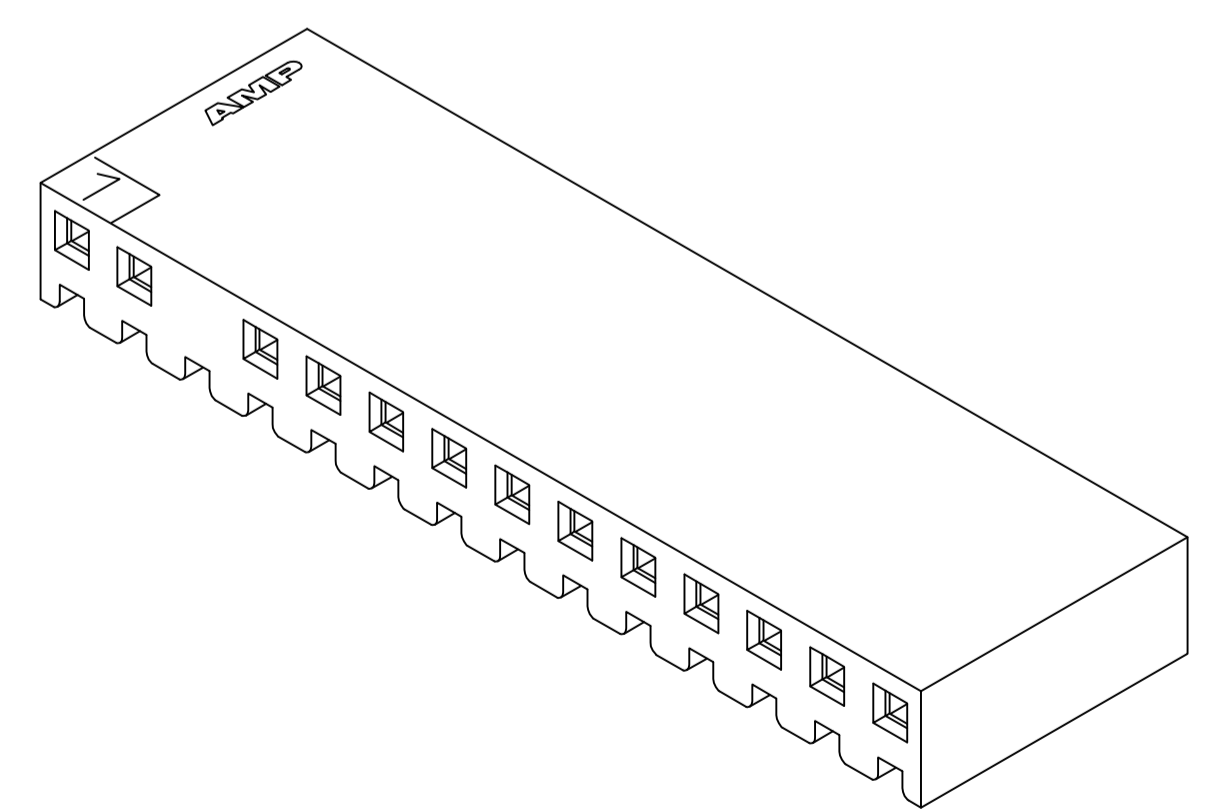
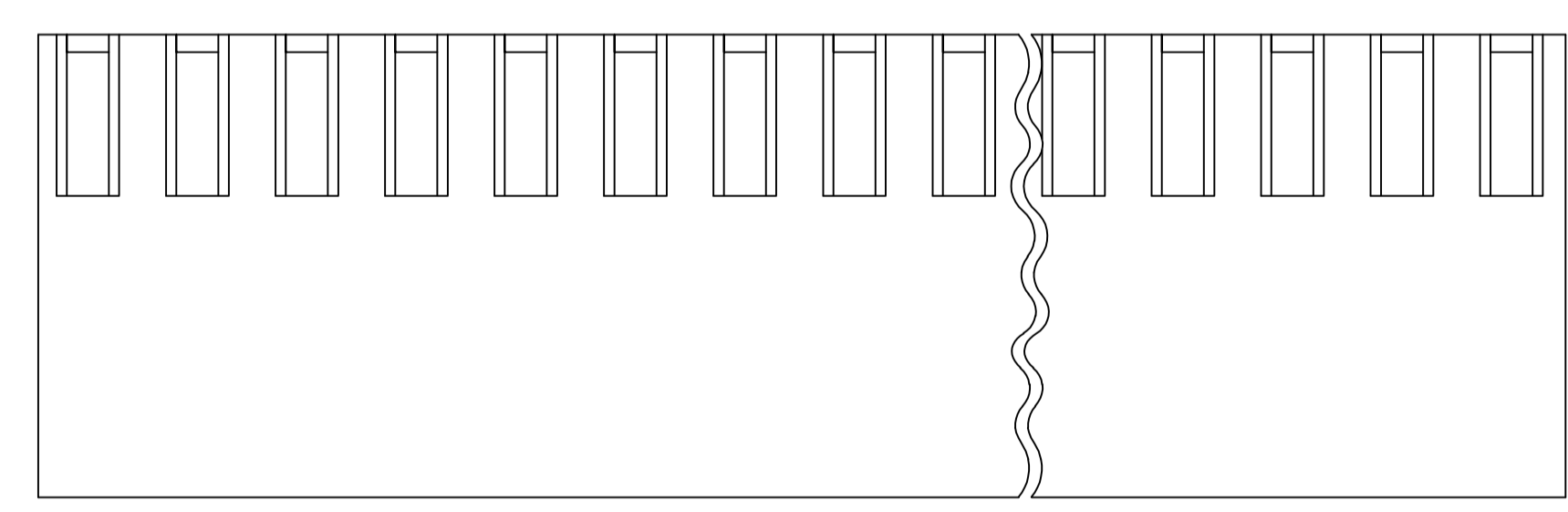
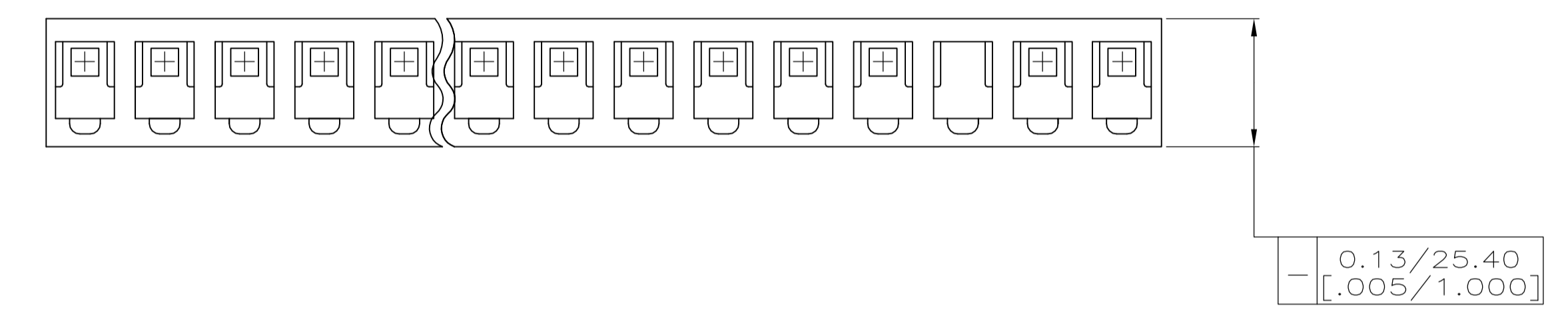
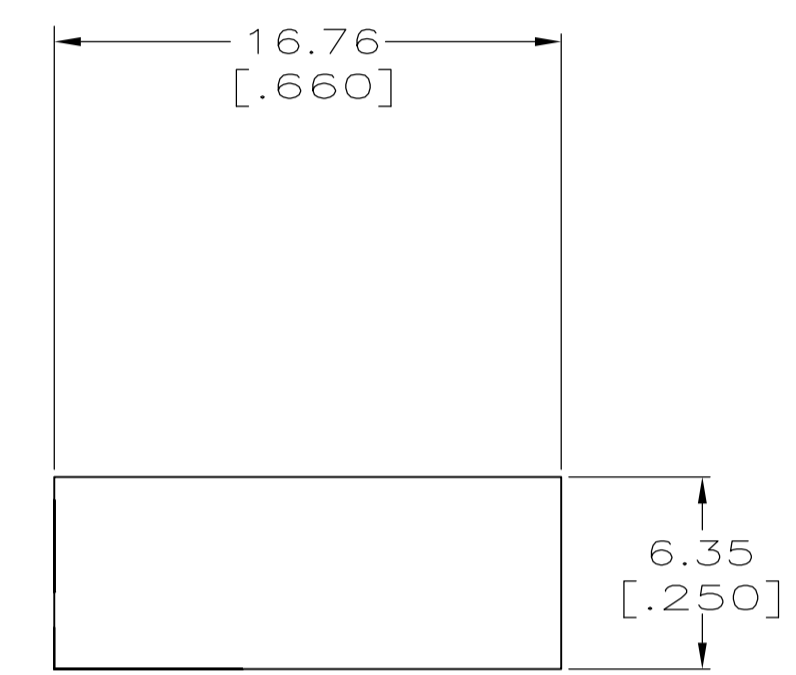
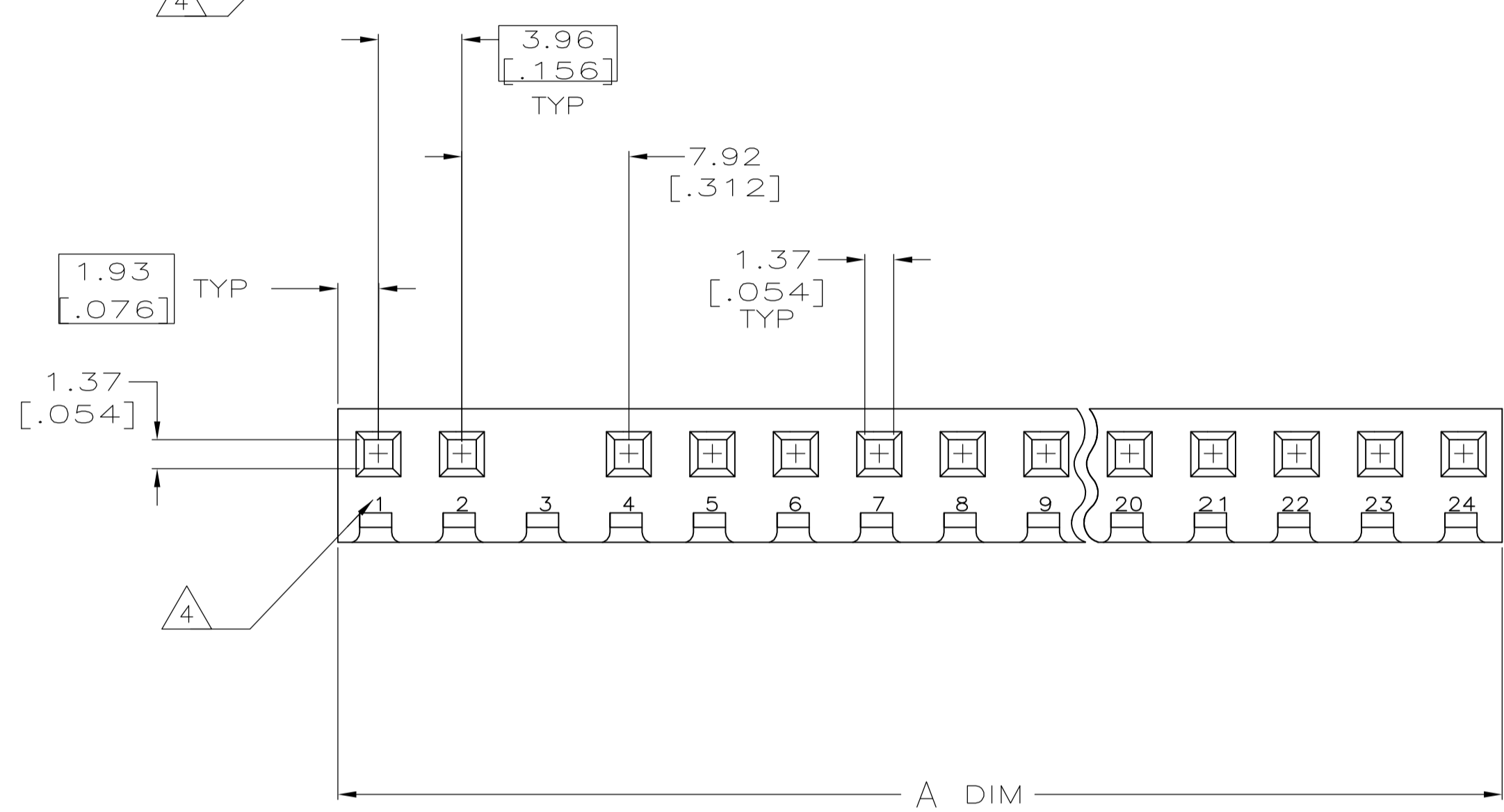
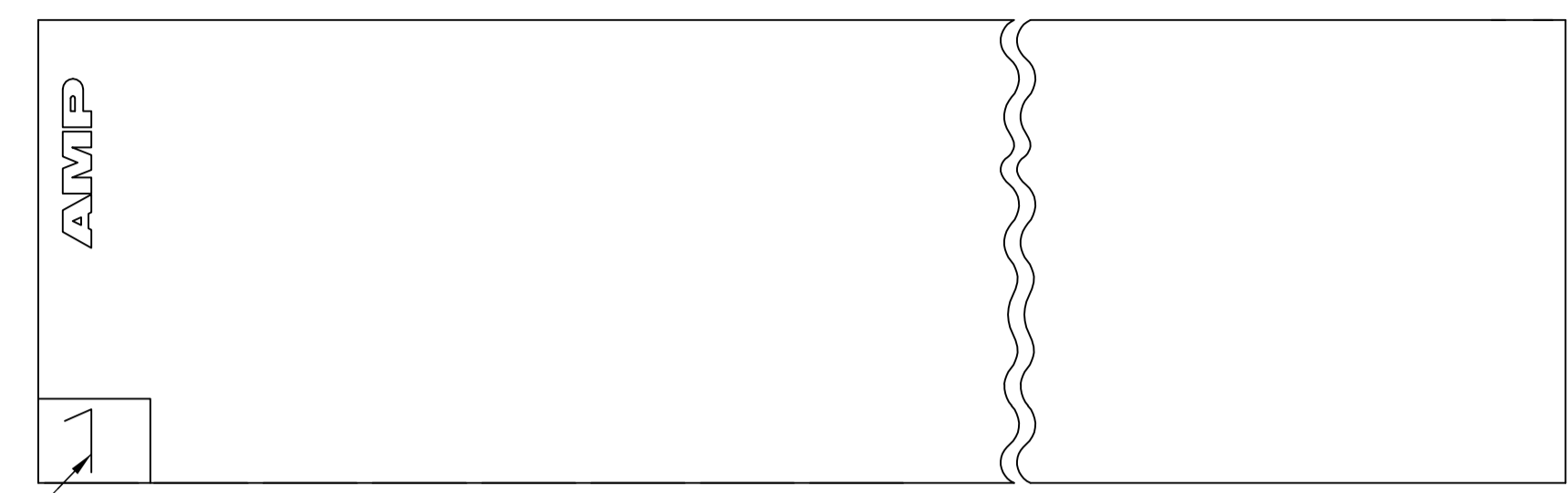


LOC		DIST		REVISIONS			
P	LTR	DESCRIPTION	DATE	DMN	APVD		
A		REVISED PER ECO-12-007807	06AUG12	KH	SM		

- 1 UNIT ACCEPTS 1.14 [.045] SQUARE OR ROUND POST.
- 2 UNIT ACCEPTS STANDARD SL-156 CONTACTS.
- 3 UNIT ACCEPTS KEYING PLUG 640254-1 AND KEYING PIN 640255-1.
- 4 CIRCUIT I.D. NUMBER(S) TO BE LOCATED SEQUENTIALLY AS SHOWN OR ONLY NO. 1 CIRCUIT PLACED ON TOP OF HOUSING.
- 5 DIMENSIONS IN BRACKETS ARE IN INCHES.



3-DIMENSIONAL MODEL NTS

27.69 [1.090]	7	647370-7
A #0.25 [.010]	NO. OF CIRCUITS	PART NUMBER

THIS DRAWING IS A CONTROLLED DOCUMENT.		BIN L. McEACHIN 14-JUN-2000		NAME	
DIMENSIONS: mm [INCHES]		CHK J. ELLIS 14-JUN-2000		STE TE Connectivity	
TOLERANCES UNLESS OTHERWISE SPECIFIED:		APVD J. ELLIS 14-JUN-2000		PRODUCT SPEC	
0 PLC ± -	1 PLC ± -	APPLICATION SPEC		SL-156 HOUSING, SPECIAL, CIRCUIT 3 BLOCKED, BLACK	
2 PLC ± -	3 PLC ± 0.13 [.005]	SIZE		RESTRICTED TO	
4 PLC ± -	ANGLES ± -	WEIGHT		A1 00779 C=647370	
MATERIAL NYLON, UL 94V-0	FINISH -	CUSTOMER DRAWING		SCALE 4:1 SHEET 1 OF 1 REV A	

单击下面可查看定价，库存，交付和生命周期等信息

[>>TE Connectivity\(泰科\)](#)