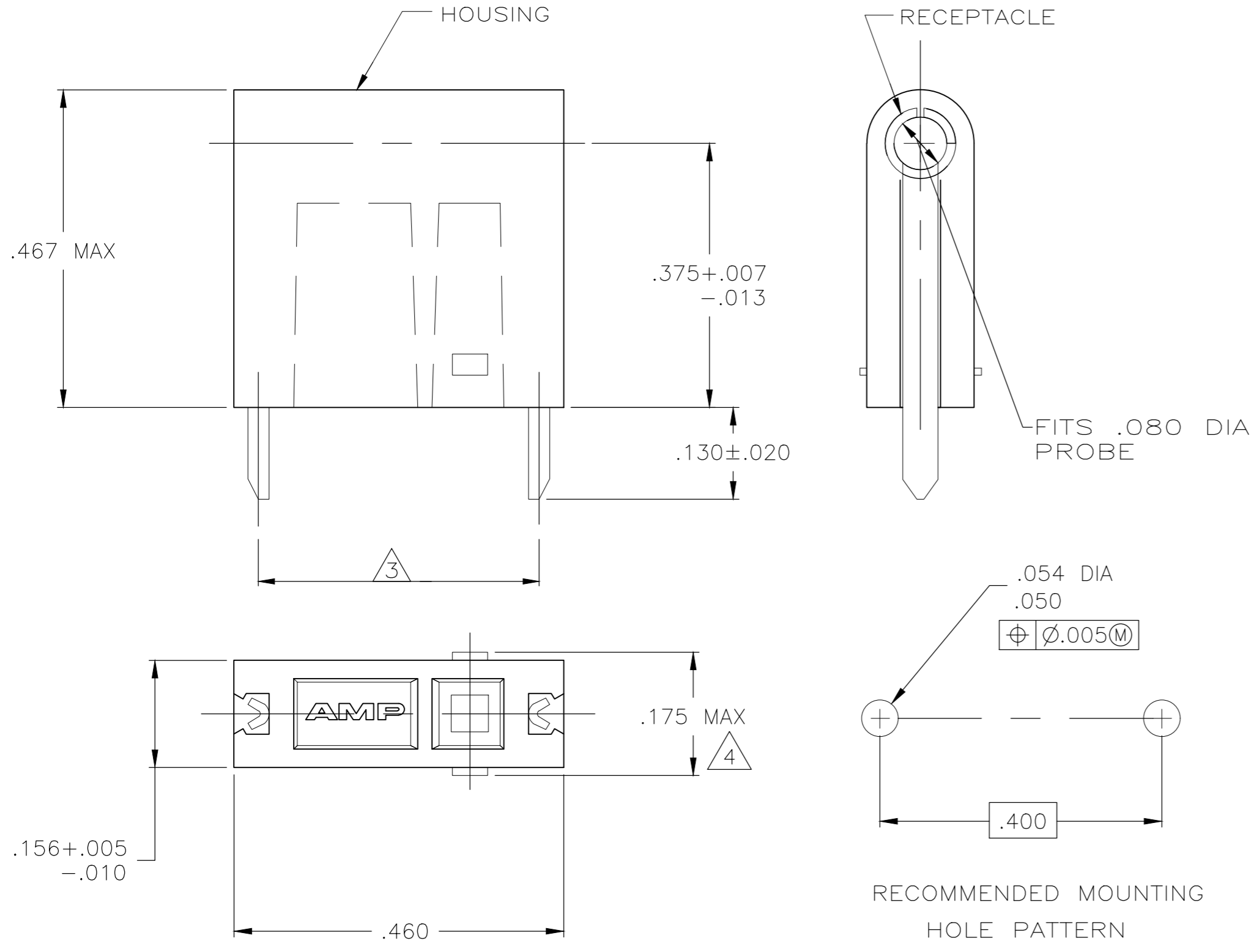


THIS DRAWING IS UNPUBLISHED. RELEASED FOR PUBLICATION
 © COPYRIGHT BY TYCO ELECTRONICS CORPORATION. ALL RIGHTS RESERVED.

LOC	DIST	REVISIONS			
P	LTR	DESCRIPTION	DATE	DWN	APVD
AF	50	REVISED PER 0G3A-0170-05	30JUN05	MF	EH
AF1		REVISED PER ECR-18-001453	30MAR2020	MK	EW

- 1 OPERATION TEMPERATURE IS 105° C MAX.
- 2 RETENTION FORCE - 16 OUNCES MIN INITIALLY.
6 OUNCES MIN AFTER 500 CYCLES.
- 3 REFER TO MOUNTING HOLE PATTERN.
- 4 .175 MAX TO BE MEASURED ACROSS THE CUT-OFF TABS.



	NYLON 6/6; WHITE	BRASS - GOLD	3-582340-9
OBSOLETE	NYLON 6/6; GRAY	BRASS - GOLD	3-582340-8
OBSOLETE	NYLON 6/6; VIOLET	BRASS - GOLD	3-582340-7
	NYLON 6/6; BLUE	BRASS - GOLD	3-582340-6
	NYLON 6/6; GREEN	BRASS - GOLD	3-582340-5
OBSOLETE	NYLON 6/6; YELLOW	BRASS - GOLD	3-582340-4
OBSOLETE	NYLON 6/6; ORANGE	BRASS - GOLD	3-582340-3
OBSOLETE	NYLON 6/6; RED	BRASS - GOLD	3-582340-2
OBSOLETE	NYLON 6/6; BROWN	BRASS - GOLD	3-582340-1
	NYLON 6/6; BLACK	BRASS - GOLD	3-582340-0
OBSOLETE	NYLON 6/6; WHITE	BRASS - SILVER	2-582340-9
OBSOLETE	NYLON 6/6; GRAY	BRASS - SILVER	2-582340-8
OBSOLETE	NYLON 6/6; VIOLET	BRASS - SILVER	2-582340-7
OBSOLETE	NYLON 6/6; BLUE	BRASS - SILVER	2-582340-6
OBSOLETE	NYLON 6/6; GREEN	BRASS - SILVER	2-582340-5
OBSOLETE	NYLON 6/6; YELLOW	BRASS - SILVER	2-582340-4
OBSOLETE	NYLON 6/6; ORANGE	BRASS - SILVER	2-582340-3
OBSOLETE	NYLON 6/6; RED	BRASS - SILVER	2-582340-2
OBSOLETE	NYLON 6/6; BROWN	BRASS - SILVER	2-582340-1
OBSOLETE	NYLON 6/6; BLACK	BRASS - SILVER	2-582340-0
OBSOLETE	NYLON 6/6; WHITE	BRASS - TIN	1-582340-9
OBSOLETE	NYLON 6/6; GRAY	BRASS - TIN	1-582340-8
	NYLON 6/6; VIOLET	BRASS - TIN	1-582340-7
OBSOLETE	NYLON 6/6; BLUE	BRASS - TIN	1-582340-6
OBSOLETE	NYLON 6/6; GREEN	BRASS - TIN	1-582340-5
OBSOLETE	NYLON 6/6; YELLOW	BRASS - TIN	1-582340-4
OBSOLETE	NYLON 6/6; ORANGE	BRASS - TIN	1-582340-3
OBSOLETE	NYLON 6/6; RED	BRASS - TIN	1-582340-2
OBSOLETE	NYLON 6/6; BROWN	BRASS - TIN	1-582340-1
	NYLON 6/6; BLACK	BRASS - TIN	1-582340-0

OBSOLETE	NYLON 6/6; NATURAL	BRASS - GOLD	6-582340-9
OBSOLETE	NYLON 6/6; NATURAL	BRASS - SILVER	5-582340-9
	HOUSING - MATERIAL; COLOR	RECEPTACLE - MATERIAL; FINISH	PART NUMBER

THIS DRAWING IS A CONTROLLED DOCUMENT.		DWN M.S. FEHER 13APR2004	
DIMENSIONS: mm		CHK E. HOWARD 13APR2004	
TOLERANCES UNLESS OTHERWISE SPECIFIED:		APVD E. HOWARD 13APR2004	
0 PLC ± - 1 PLC ± - 2 PLC ± .015 3 PLC ± - 4 PLC ± - ANGLES ± -		PRODUCT SPEC	
MATERIAL SEE TABLE	FINISH SEE TABLE	APPLICATION SPEC	NAME ASSEMBLY, TEST PROBE
CUSTOMER DRAWING		WEIGHT -	SIZE A2
		SCALE 6:1	CAGE CODE 00779
		SHEET 1	DRAWING NO C=582340
		RESTRICTED TO -	REV AF1

单击下面可查看定价，库存，交付和生命周期等信息

[>>TE Connectivity\(泰科\)](#)