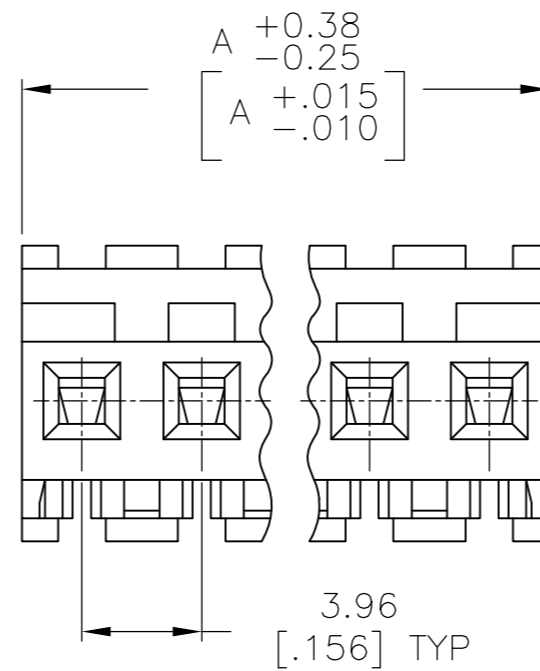
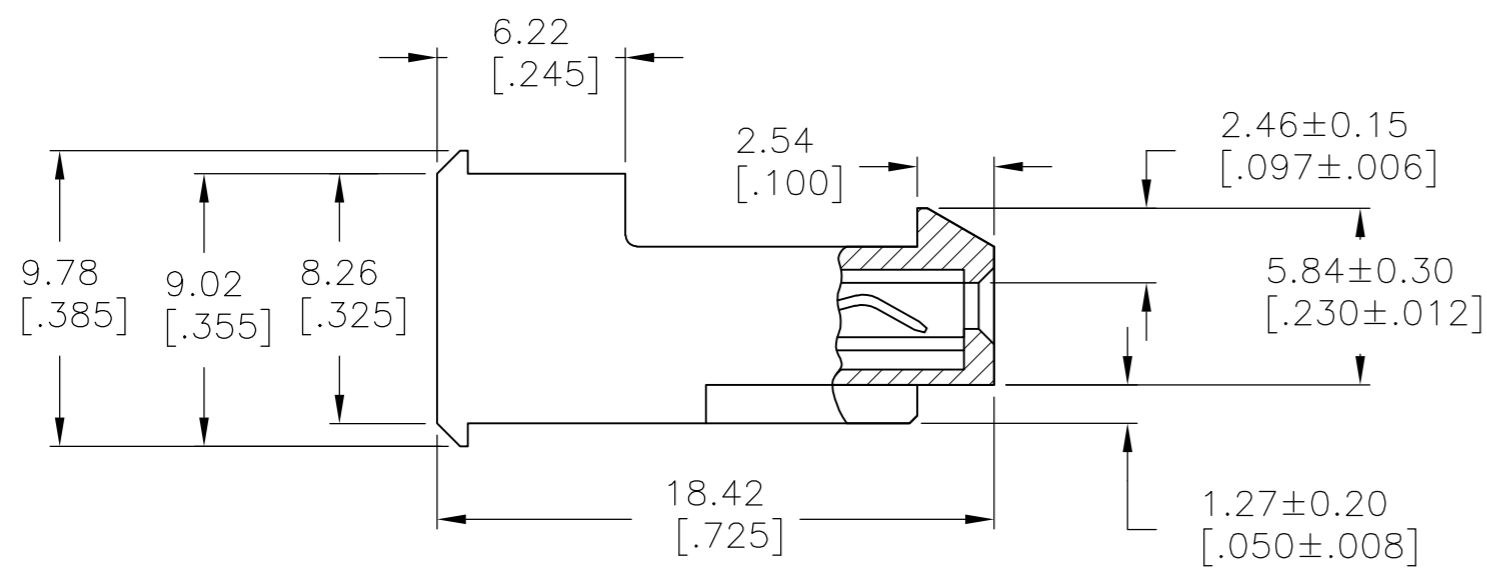
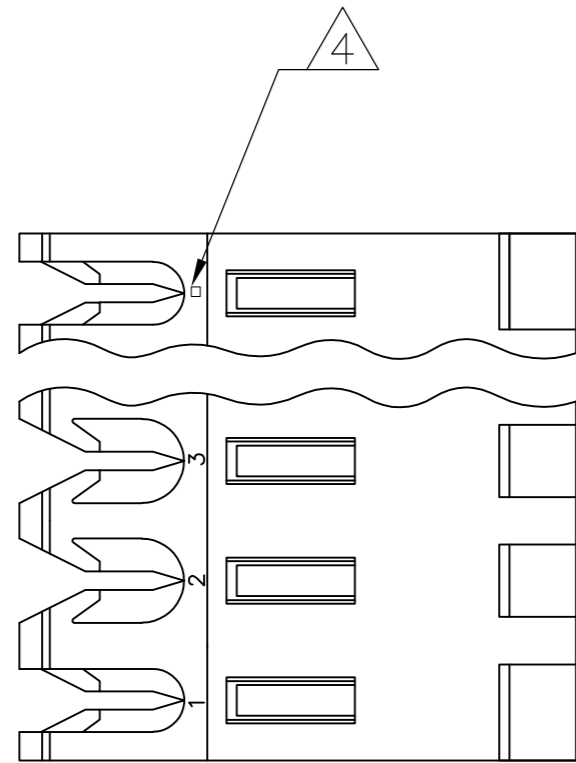


THIS DRAWING IS UNPUBLISHED. RELEASED FOR PUBLICATION
 © COPYRIGHT - By - TE CONNECTIVITY ALL RIGHTS RESERVED.

LOC	DIST	REVISIONS					
CM	00	P	LTR	DESCRIPTION	DATE	DWN	APVD
		N2		REVISED PER ECR-15-006687	26OCT2015	NK	NL



1 MATERIAL: CONNECTOR - NYLON UL94V-2 (YELLOW).
 CONTACTS - 0.00076[.000030] GOLD THK OR 0.00008[.000003] MIN THK
 GOLD FLASH OVER 0.00068[.000027] THK PALLADIUM NICKEL, PER TE
 CONNECTIVITY'S DISCRETION. IN CONTACT
 AREA WITH BRIGHT TIN-LEAD FOR 641228-2
 THRU 2-641228-4, MATTE WHISKER MITIGATED
 TIN FOR 3-641228-2 THRU 5-641228-4
 OVER NICKEL UNDERPLATE.

2 CONTACTS ACCEPT 20 AWG WIRE WITH 2.41[.095] MAX
 INSULATION DIAMETER.

3 CONTACTS MUST ACCEPT 1.14±0.03 [.045±.001] SQUARE
 POST AND REMAIN LOCKED IN POSITION.

4 IDENTIFICATION NUMBER FOR LAST CIRCUIT MAY
 NOT APPEAR ON ALL ASSEMBLIES.

5 DIMENSIONS IN BRACKETS ARE IN INCHES.

6 HOUSING FEATURES ARE: FEED-THRU WITH LOCKING
 RAMP.

7 OBSOLETE PARTS: OBSOLETE CIS STREAMLINING PER D.RENAUD/D.SINISI

DIM A	NO OF CIRCUITS	PART NO
95.10 [3.744]	24	5-641228-4
91.14 [3.588]	23	5-641228-3
87.17 [3.432]	22	5-641228-2
83.21 [3.276]	21	5-641228-1
79.25 [3.120]	20	5-641228-0
75.29 [2.964]	19	4-641228-9
71.32 [2.808]	18	4-641228-8
67.36 [2.652]	17	4-641228-7
63.40 [2.496]	16	4-641228-6
59.44 [2.340]	15	4-641228-5
55.47 [2.184]	14	4-641228-4
51.51 [2.028]	13	4-641228-3
47.55 [1.872]	12	4-641228-2
43.59 [1.716]	11	4-641228-1
39.62 [1.560]	10	4-641228-0
35.66 [1.404]	9	3-641228-9
31.70 [1.248]	8	3-641228-8
27.74 [1.092]	7	3-641228-7
23.77 [.936]	6	3-641228-6
19.81 [.780]	5	3-641228-5
15.85 [.624]	4	3-641228-4
11.89 [.468]	3	3-641228-3
7.92 [.312]	2	3-641228-2
95.10 [3.744]	24	2-641228-4
91.14 [3.588]	23	2-641228-3
87.17 [3.432]	22	2-641228-2
83.21 [3.276]	21	2-641228-1
79.25 [3.120]	20	2-641228-0
75.29 [2.964]	19	1-641228-9
71.32 [2.808]	18	1-641228-8
67.36 [2.652]	17	1-641228-7
63.40 [2.496]	16	1-641228-6
59.44 [2.340]	15	1-641228-5
55.47 [2.184]	14	1-641228-4
51.51 [2.028]	13	1-641228-3
47.55 [1.872]	12	1-641228-2
43.59 [1.716]	11	1-641228-1
39.62 [1.560]	10	1-641228-0
35.66 [1.404]	9	641228-9
31.70 [1.248]	8	641228-8
27.74 [1.092]	7	641228-7
23.77 [.936]	6	641228-6
19.81 [.780]	5	641228-5
15.85 [.624]	4	641228-4
11.89 [.468]	3	641228-3
7.92 [.312]	2	641228-2

7 SUPERCEDED

OBSOLETE

7 SUPERCEDED

THIS DRAWING IS A CONTROLLED DOCUMENT.		DWN B. LEWIS 12 MAR 96		
DIMENSIONS: mm [INCHES]		CHK R. SWING 12 MAR 96		
TOLERANCES UNLESS OTHERWISE SPECIFIED:		APVD D. CLARK 12 MAR 96	NAME	
0 PLC ± -	1 PLC ± -	PRODUCT SPEC	MTA-156 CONNECTOR ASSEMBLY, 20 AWG, STANDARD	
2 PLC ± -	3 PLC ± 0.13 [.005]	APPLICATION SPEC	SIZE	CAGE CODE
4 PLC ± -	ANGLES ± 0° 30'	WEIGHT	A2	00779
MATERIAL	FINISH	CUSTOMER DRAWING	DRAWING NO	RESTRICTED TO
1	1	SCALE	4:1	SHEET
			641228	1 OF 1
			REV	N2

单击下面可查看定价，库存，交付和生命周期等信息

[>>TE Connectivity\(泰科\)](#)