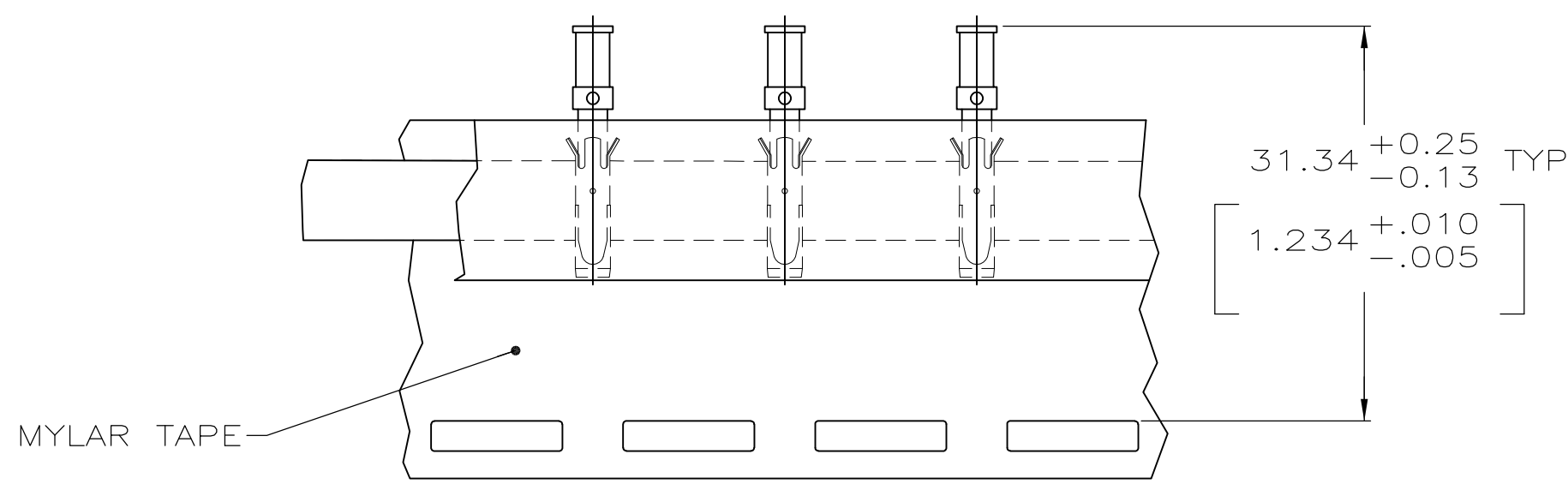
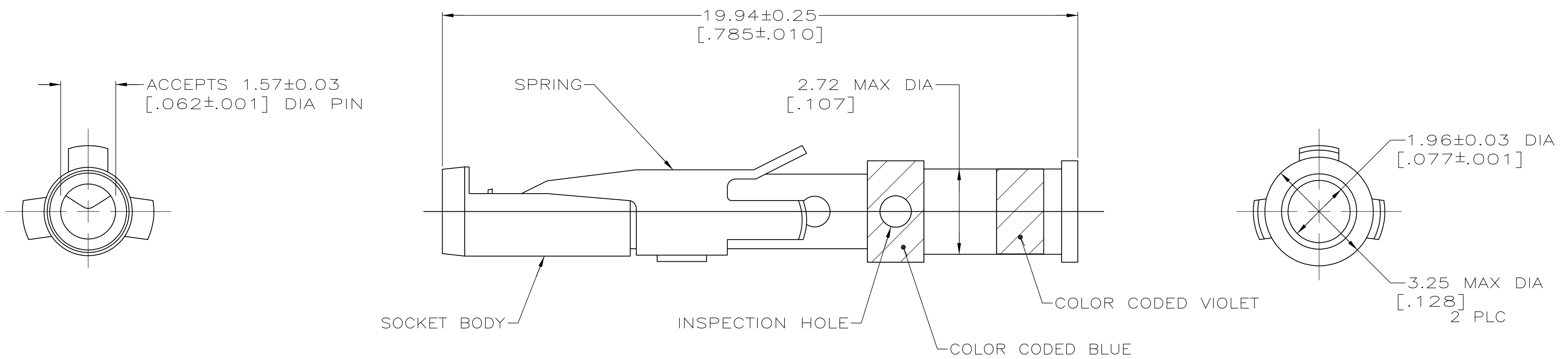


| ZONE | | LTR | DESCRIPTION | DATE | APPD |
|------|--|-----|---|----------|--------|
| | | U | ADDED -8 NPR 4680 AND REDRAWN ON CAD, OBS -4 EC 0020-344-93 | 04/06/93 | - |
| | | U1 | REVISED PER ECO-09-020935 | 08SEP09 | KK AEG |



TAPE MTG DETAIL
SCALE 2:1

- △ 0.76µm [.000030] MIN GOLD OVER 1.27µm [.000050] MIN NICKEL.
- △ 1.27µm [.000050] MIN GOLD OVER 1.27µm [.000050] MIN NICKEL.
- △ WHEN ORDERING CONTACT ASSEMBLY ON TAPE, ORDER BY THE TAPE NUMBER PLUS THE PACKAGING CODE AS FOLLOWS:
 1. FOR USE WITH AMP TAPETRONIC, PNEUMATIC TOOL-
 - A. 1000 PARTS TO A BOX ADD PACKAGING CODE: 1MBOX
 2. FOR USE WITH 4/8 INDENT STRIPPER CRIMPER-
 - A. 1000 PARTS TO A REEL ADD PACKAGING CODE: 1MREEL
 - B. 5000 PARTS TO A REEL ADD PACKAGING CODE: 5MREEL
- △ OBSOLETE PARTS: OBSOLETE CIS STREAMLINING PER D.RENAUD/D.SINISI

| | | | | |
|--|----------|---------------------------|--|------------|
| △ 4 | OBSOLETE | SMALL PACK | △ 1 | -201568-8- |
| | OBSOLETE | STANDARD | △ 2 | 201568-4 |
| | | TAPE MTG (SEE DETAIL) △ 3 | △ 1 | 201568-3 |
| | | STANDARD | △ 1 | 201568-1 |
| | | PACKAGING TYPE | SOCKET BODY FINISH | PART NO |
| DO NOT SCALE PRINT. UNLESS SPECIFIED DIMENSIONS IN mm [INCHES] TOLERANCES ON : | | DR 04/06/93 D.GELTZ | AMP Incorporated Harrisburg, PA 17105-3608 | |
| 2 PLC DEC ± - | | CHK 4-26-93 R.STONE | | |
| 3 PLC DEC ± - | | APPD 4-29-93 R.S.KLINE | NAME | |
| ANGLES ± - | | APPD - | CONTACT ASSEMBLY, SOCKET, #16, 14 AWG, TYPE II | |
| MATERIAL | | PRODUCT SPEC | | |
| SOCKET BODY: COPPER ALLOY | | APPLICATION SPEC | SIZE | CAGE CODE |
| SPRING: STAINLESS STEEL | | | △ C | 00779 |
| FINISH | | | DRAWING NO | |
| SOCKET BODY: SEE TABLE | | | △ C-201568 | |
| | | WEIGHT | SCALE | SHEET |
| | | - | 10:1 | 1 OF 1 |

THIS DRAWING IS A CONTROLLED DOCUMENT FOR AMP INCORPORATED. IT IS SUBJECT TO CHANGE AND THE CONTROLLING ENGINEERING ORGANIZATION SHOULD BE CONTACTED FOR THE LATEST REVISION.

单击下面可查看定价，库存，交付和生命周期等信息

[>>TE Connectivity\(泰科\)](#)