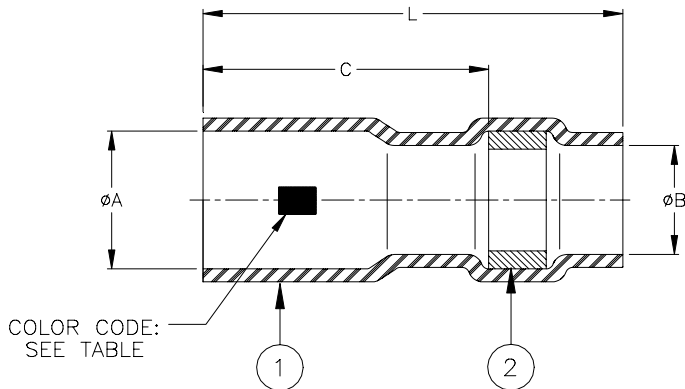


CUSTOMER DRAWING



Product Name	Product Dimensions				Wire Accommodation*		Color Code
	L ±0.50 (L ±0.020)	C min	øA min	øB min	One Wire (AWG)	Two Wires (AWG)	
D-141-0111	6.10 (0.240)	2.80 (0.110)	1.90 (0.075)	0.89 (0.035)	26, 28, 30	30	Red
D-141-0112	6.10 (0.240)	2.80 (0.110)	2.10 (0.083)	1.07 (0.042)	22, 24	26, 28	Blue
D-141-0113	6.10 (0.240)	2.80 (0.110)	2.30 (0.092)	1.27 (0.050)	20	24	Yellow
D-141-0114	6.10 (0.240)	2.80 (0.110)	2.60 (0.103)	1.49 (0.059)	18	22	Green

* Variations in pin/wire geometry may require use of a different size sleeve in some instances. Consult Tyco Electronics for specific recommendations.

MATERIALS

- INSULATION SLEEVE: Heat shrinkable, transparent blue, radiation cross-linked polyvinylidene fluoride.
- SOLDER PREFORM WITH FLUX:
SOLDER: TYPE Sn63 per ANSI J-STD-006.
FLUX: TYPE ROL1 per ANSI J-STD-004.

APPLICATION

- These parts are designed to attach wires having tin or silver plated stranded conductors to 0.60 (0.025) square wire wrapping posts.
*Wire Accommodation: See table.
- Sleeve is to applied using the following Tyco Electronics tools:
AD-1545 Installation tool plus either:
RH-3900 (115 VAC) Resistance Heater or
RH-3920 (230 VAC) Resistance Heater
- For installation instructions, see Tyco Electronics Procedure RCPS-200-32.

		Tyco Electronics 300 Constitution Dr Menlo Park, CA 94025, U.S.A.		TITLE: SOLDERSLEEVE TERMINATOR FOR 0.60 X 0.60, 0.025 X 0.025, WIRE WRAPPING POSTS		
Unless otherwise specified dimensions are in millimeters. [Inches dimensions are shown in brackets]		Raychem Devices		DOCUMENT NO.: D-141-0111/-0114		
TOLERANCES: 0.00 N/A 0.0 N/A 0 N/A	ANGLES: N/A ROUGHNESS IN MICRON	Tyco Electronics reserves the right to amend this drawing at any time. Users should evaluate the suitability of the product for their application.		REV: D1	DATE: 18-Jun-08	
DRAWN BY: P.TALLY	CAGE CODE: 06090	REPLACES: D010071	ECO NUMBER: 08-015239	SCALE: NTS	SIZE: A	SHEET: 1 of 1

© 2008 Tyco Electronics Corporation. All rights reserved.

If this document is printed it becomes uncontrolled. Check for the latest revision.

单击下面可查看定价，库存，交付和生命周期等信息

[>>TE Connectivity\(泰科\)](#)