

4

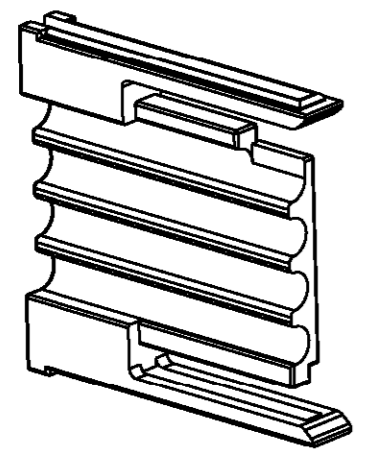
3

2

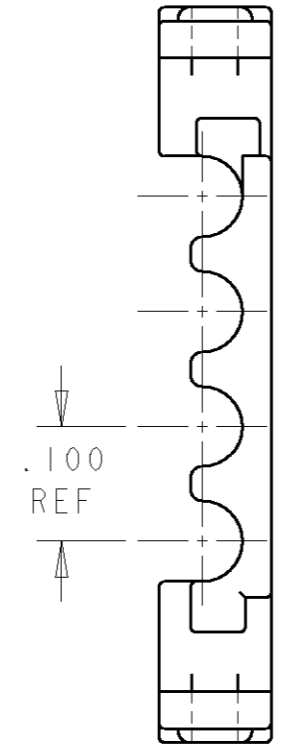
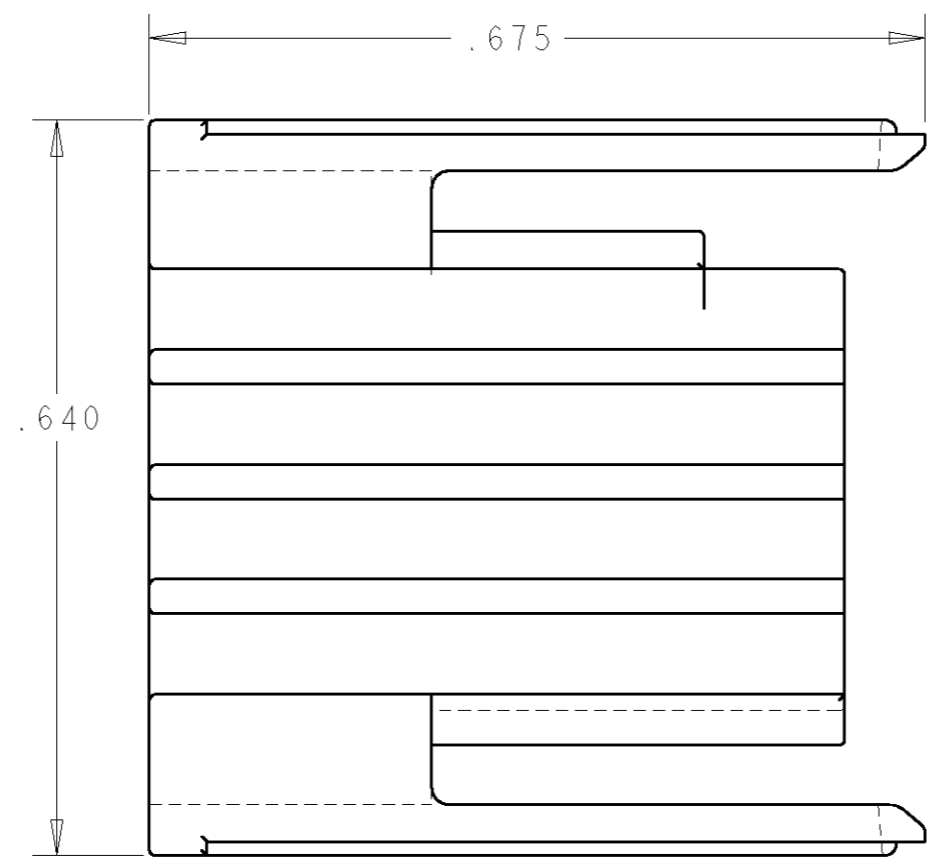
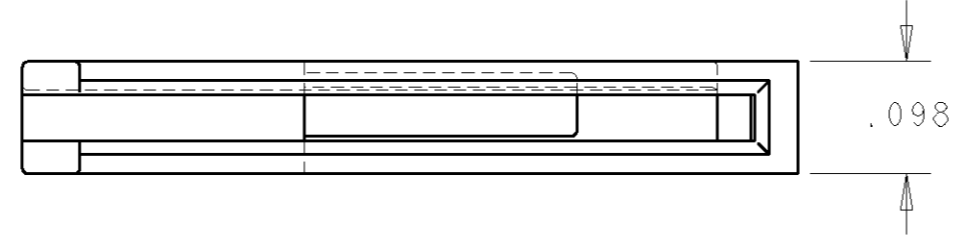
1

THIS DRAWING IS UNPUBLISHED. RELEASED FOR PUBLICATION 20  
 © COPYRIGHT 20 BY TYCO ELECTRONICS CORPORATION. ALL RIGHTS RESERVED.

LOC	DIST	REVISIONS			
P	LTR	DESCRIPTION	DATE	DWN	APVD
GP	00				
	A	RELEASED PER OS12-0074-05	14FEB2005	RG	PD
	B	REV PER ECO-05-008469	08SEP2005	RG	PD



ISOMETRIC VIEW  
SCALE 3:1



△ MATERIAL: THERMOPLASTIC, UL 94 HB

<small>THIS DRAWING IS A CONTROLLED DOCUMENT FOR TYCO ELECTRONICS CORPORATION          IT IS SUBJECT TO CHANGE AND THE CONTROLLING ENGINEERING ORGANIZATION          SHOULD BE CONTACTED FOR THE LATEST REVISION.</small>		DWN D. RINGLER 17MAR2003	<b>tyco</b> <b>Electronics</b> Tyco Electronics Harrisburg, PA 17105-3608	
DIMENSIONS: INCHES		CHK M. CORRELL 17MAR2003	NAME SIGNAL SECONDARY LOCK INSERT MULTI-BEAM XL	
TOLERANCES UNLESS OTHERWISE SPECIFIED: 0 PLC ±- 1 PLC ±- 2 PLC ±.01 3 PLC ±.005 4 PLC ±- ANGLES ±2°		APVD -	PRODUCT SPEC 108-2157	
MATERIAL △		APPLICATION SPEC 114-13112	SIZE A3	CAGE CODE 00779
FINISH -		WEIGHT -	DRAWING NO C-1600902	RESTRICTED TO -
CUSTOMER DRAWING			SCALE 6:1	SHEET 1 OF 1 REV B

单击下面可查看定价，库存，交付和生命周期等信息

[>>TE Connectivity\(泰科\)](#)