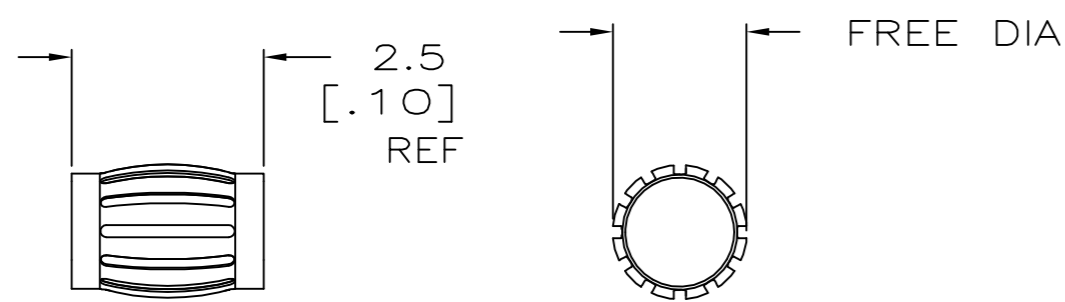
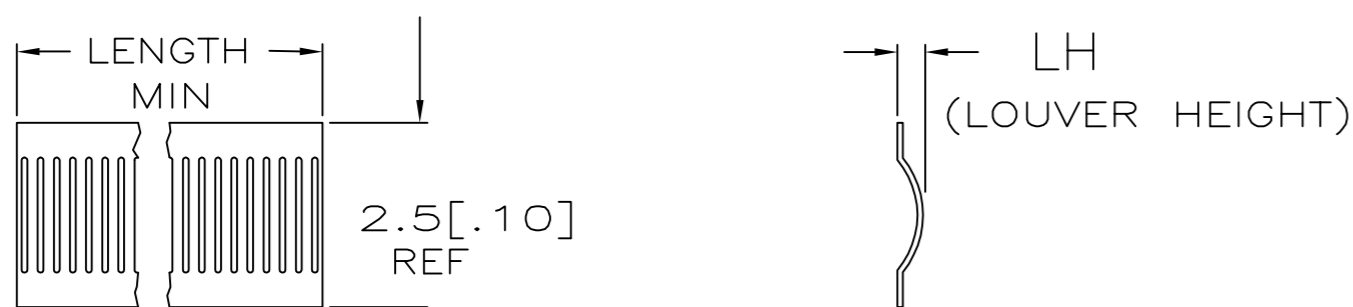


THIS DRAWING IS UNPUBLISHED. RELEASED FOR PUBLICATION
 © COPYRIGHT - By - ALL RIGHTS RESERVED.

REVISIONS					
P	LTR	DESCRIPTION	DATE	DWN	APVD
H		REVISED PER ECO-15-011611	05NOV2015	NK	MZ
J		REVISED PER ECO-17-013721	15NOV2017	RS	MZ



STYLE B
(MALE)



STYLE C
(STRIP)

10	OBSOLETE	B	.375	--	[.014]	8	9.5	[.375]	4-2	40	0.10	[.004]	--	2-192048-6
	OBSOLETE	B	.06	--	[.012]	8	1.7	[.067]	1-2	5	0.10	[.004]	--	2-192048-5
		B	.20	--	[.014]	--	--	--	3-2	20	0.10	[.004]	--	2-192048-4
10	OBSOLETE	--	--	--	--	--	--	--	--	--	--	--	--	2-192048-3
		--	--	--	--	--	--	--	--	--	--	--	--	2-192048-2
		B	.06	--	[.012]	8	--	--	UNPL	5	0.10	[.004]	--	2-192048-1
		C	--	NOTE 6	[.014]	8	--	--	UNPL	--	0.10	[.004]	--	2-192048-0
	OBSOLETE	NOT AVAILABLE											06802	1-192048-9
	OBSOLETE	B	.65	--	[.012]	8	16.6	[.655]	2	71	0.10	[.004]	06050	1-192048-8
10		B	.65	--	[.012]	8	16.6	[.655]	UNPL	71	0.10	[.004]	06049	1-192048-7
	OBSOLETE	NOT AVAILABLE											06036	1-192048-6
	OBSOLETE	B	.59	--	[.012]	8	15.2	[.600]	UNPL	65	0.10	[.004]	06030	1-192048-5
10		B	.28	--	[.012]	8	7.3	[.288]	UNPL	30	0.10	[.004]	06028	1-192048-4
		B	.16	--	[.012]	8	4.4	[.175]	3-2	17	0.10	[.004]	06038	1-192048-3
		B	.16	--	[.012]	8	4.4	[.175]	UNPL	17	0.10	[.004]	06039	1-192048-2
		B	.13	--	[.016]	8	3.2	[.127]	4-2	11	0.10	[.004]	06031	1-192048-1
		B	.13	--	[.016]	8	3.2	[.127]	UNPL	11	0.10	[.004]	06034	1-192048-0
OBSOLETE		B	--	--	[.016]	8	3.2	[.127]	4-2	11	0.08	[.003]	06072	192048-9
10		B	.13	--	[.016]	8	3.2	[.127]	UNPL	11	0.08	[.003]	06071	192048-8
		B	.06	--	[.012]	8	1.7	[.067]	4-2	5	0.10	[.004]	06060	192048-7
OBSOLETE		B	.05	--	[.016]	8	1.3	[.051]	4-2	4	0.10	[.004]	06058	192048-6
10	OBSOLETE	B	.05	--	[.016]	8	1.3	[.051]	UNPL	4	0.10	[.004]	06015	192048-5
	OBSOLETE	NOT AVAILABLE											06059	192048-4
OBSOLETE		C	--	NOTE 7	[.014]	8	--	--	4-2	--	0.10	[.004]	06032	192048-3
10		C	--	NOTE 6	[.014]	8	--	--	3-2	--	0.10	[.004]	06051	192048-2
OBSOLETE		C	--	NOTE 7	[.014]	8	--	--	UNPL	--	0.10	[.004]	06033	192048-1

- 1 FINISH-SILVER PLATE 200μIN THICK MIN.
- 2 FINISH-NICKEL PLATE 40μIN THICK MIN.
- 3 FINISH-GOLD PLATE 10μIN THICK MIN.
- 4 FINISH-GOLD PLATE 20μIN THICK MIN.
- 5 PLATING NOTES ARE TO BE INTERPRETED AS FOLLOWS, 3-2 AS 3 OVER 2.
- 6 PRODUCT IS SOLD BY THE FOOT.
- 7 72 INCH STRIP WOUND TO A ONE INCH INSIDE DIAMETER.
- 8 MATERIAL-BeCu (CDA172).
- 9 PRELIMINARY PART NUMBER
- 10 OBSOLETE PARTS: OBSOLETE CIS STREAMLINING PER D.RENAUD/D.SINISI

STYLE	FREE DIA	LENGTH	LH	MAT'L (NOTE)	MATING DIA REF	PLATING (NOTE)	NUM LOUV	MAT'L THK	REF	PART NO.
THIS DRAWING IS A CONTROLLED DOCUMENT.										
DIMENSIONS: mm [INCHES]						TOLERANCES UNLESS OTHERWISE SPECIFIED:		DWN RA JAYNE 06-12-92		
						0 PLC ± -		CHK -		
						1 PLC ± -		APVD -		
						2 PLC ± 0.5[.02]		PRODUCT SPEC -		
						3 PLC ± 0.25[.010]		APPLICATION SPEC -		
MATERIAL SEE TABLE						FINISH SEE TABLE		WEIGHT -		
CUSTOMER DRAWING						SCALE NTS		SHEET 1 of 1		



CONTACT BAND, MALE

SIZE A2 CAGE CODE 00779 DRAWING NO C=192048 RESTRICTED TO -

单击下面可查看定价，库存，交付和生命周期等信息

[>>TE Connectivity\(泰科\)](#)