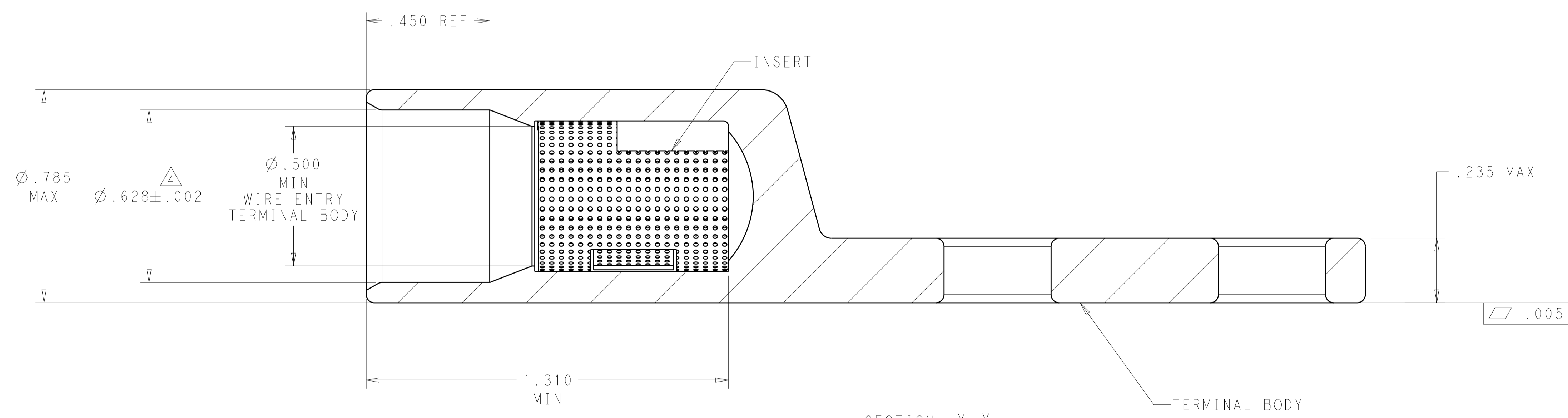
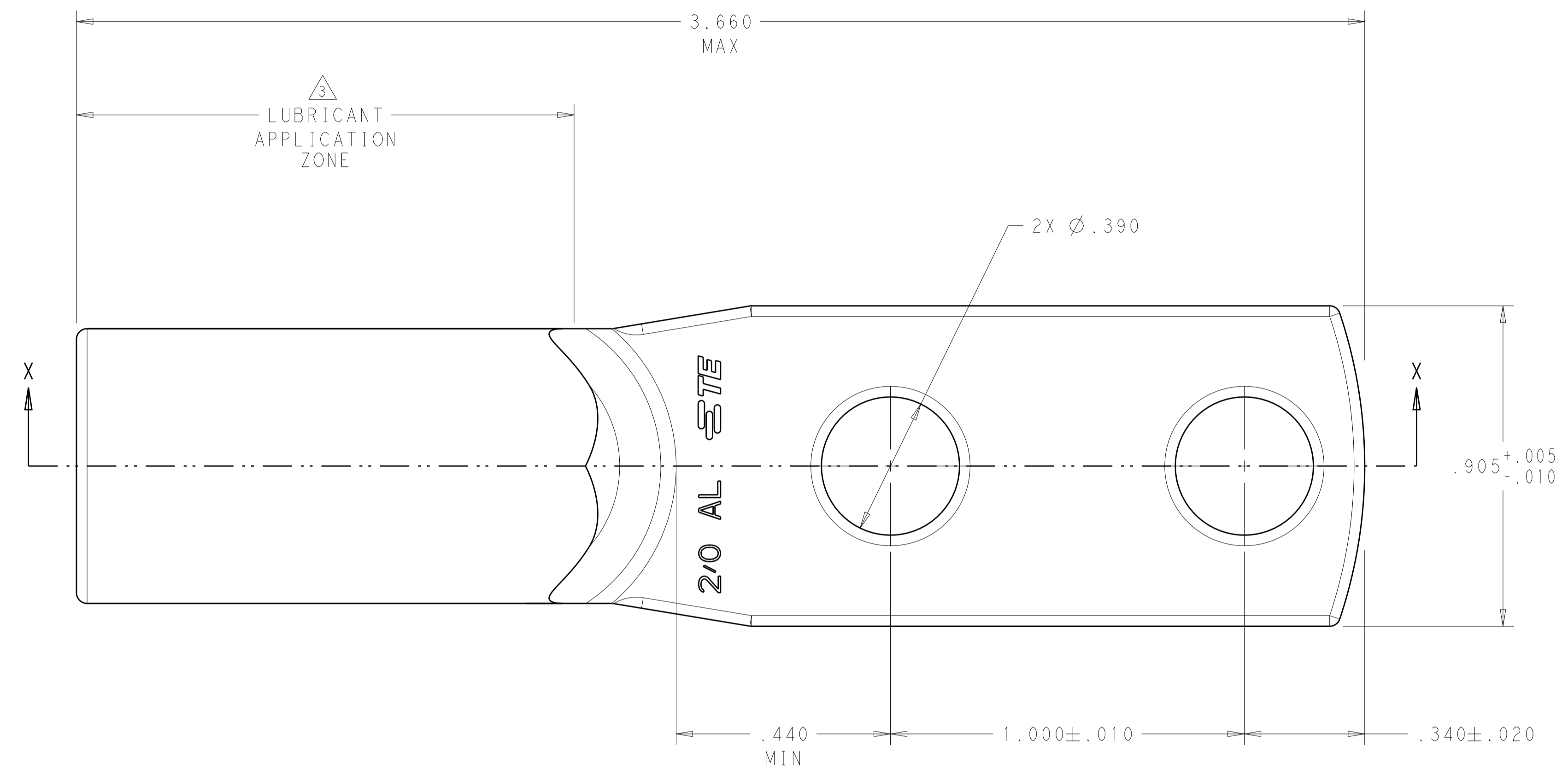
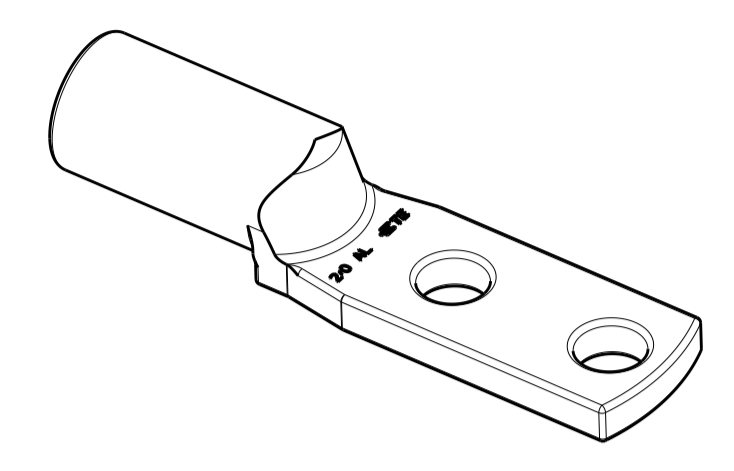


| LOC | | DIST | | REVISIONS | | | |
|-----|-----|-----------------------|--------|-----------|------|--|--|
| P | LTN | DESCRIPTION | DATE | DWN | APVD | | |
| D | | REV PER ECO 19-018307 | 3-6-20 | CT | PD | | |

- MATERIAL:
 BODY: ALUMINUM PER ASTM B317
 INSERT: BRASS PER ASTM B36
- FINISH:
 BODY: .000600 MIN MATTE TIN PER ASTM B545
 OVER .000060 MIN NICKEL PER ASTM B733.
 INSERT: .000150 MIN MATTE NICKEL PER QQ-N-290
- PTFE DRY LUBRICANT 360 DEGREE ON OUTER DIAMETER OF CRIMP BARREL IN ZONE SHOWN.
- WIRE INSULATION RANGE: .490-.574.
- SEE TE CONNECTIVITY APPLICATION SPEC. 114-32098 FOR APPLICATION REQUIREMENTS.
- SEE TE CONNECTIVITY INSTRUCTION SHEET 408-32087 FOR TOOLING AND CRIMP INSTRUCTIONS, FIGURE 3 FOR WIRE STRIPPING DETAIL.



2102581-1
 PART NO.

| | | | | |
|---|--|---|--|---|
| THIS DRAWING IS A CONTROLLED DOCUMENT. | | DWN: Brent D. Tolm CHK: K. A. DeBock APVD: K. A. DeBock | DATE: 07APR2014 | TE Connectivity NAME: TERMINAL ASSEMBLY ALUMINUM, STRAIGHT, DUAL HOLE SIZE 2/0 |
| DIMENSIONS: IN | TOLERANCES UNLESS OTHERWISE SPECIFIED: | PRODUCT SPEC: APPLICATION SPEC: | SIZE: CAGE CODE: DRAWING NO: 100779C=2102581 | |
| 0 PLC ±.1 1 PLC ±.01 2 PLC ±.005 3 PLC ±.005 4 PLC ±.0005 | ANGLES ±.1 | FINISH: SEE CALL-OUT | RESTRICTED TO: - | |
| MATERIAL: SEE CALL-OUT | WEIGHT: 36.03GRAMS | Customer Drawing | SCALE: 4:1 SHEET 1 OF 1 REV D | |

单击下面可查看定价，库存，交付和生命周期等信息

[>>TE Connectivity\(泰科\)](#)