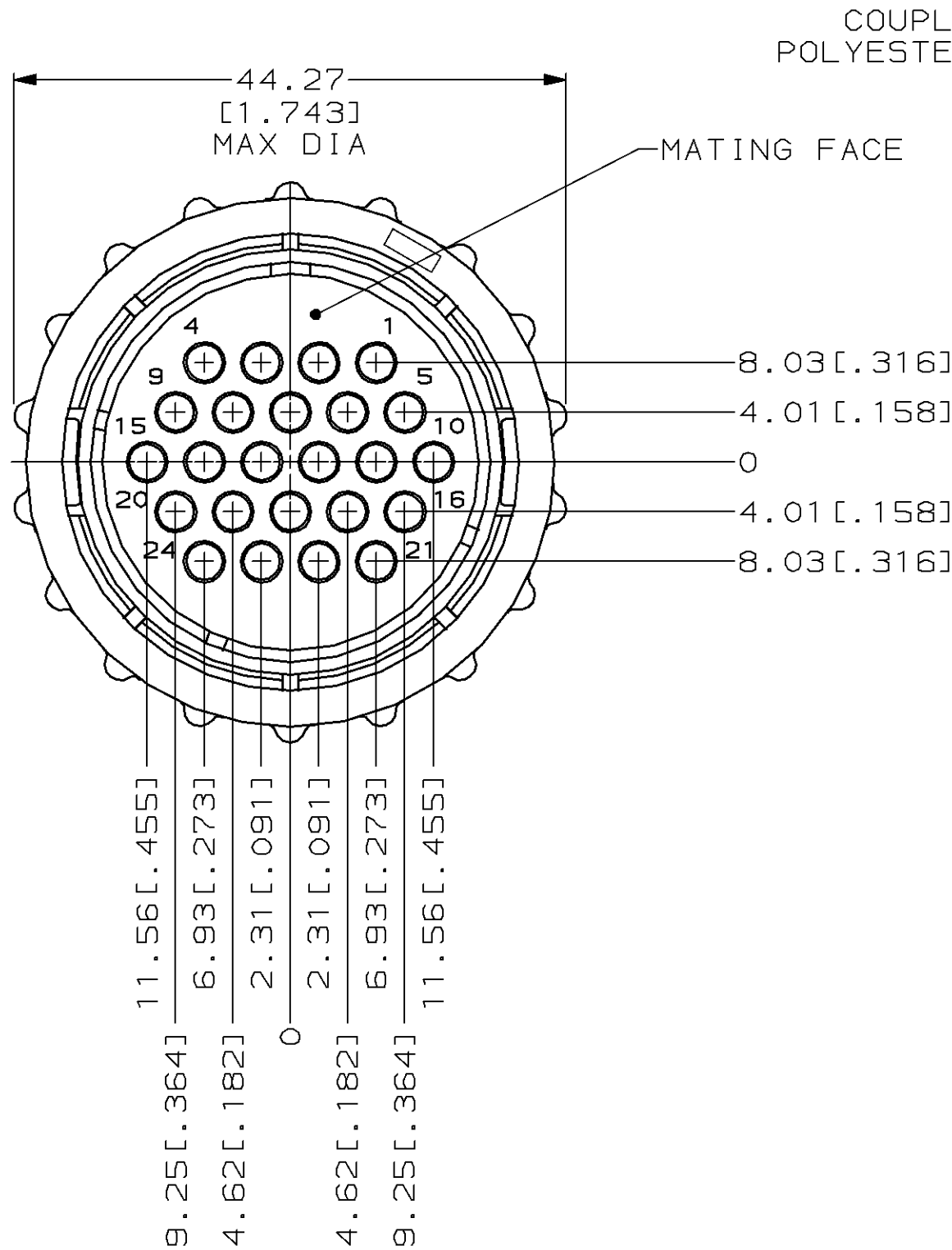


THIS DRAWING IS UNPUBLISHED. RELEASED FOR PUBLICATION, 19 .
 © COPYRIGHT 19 BY AMP INCORPORATED. ALL INTERNATIONAL RIGHTS RESERVED.

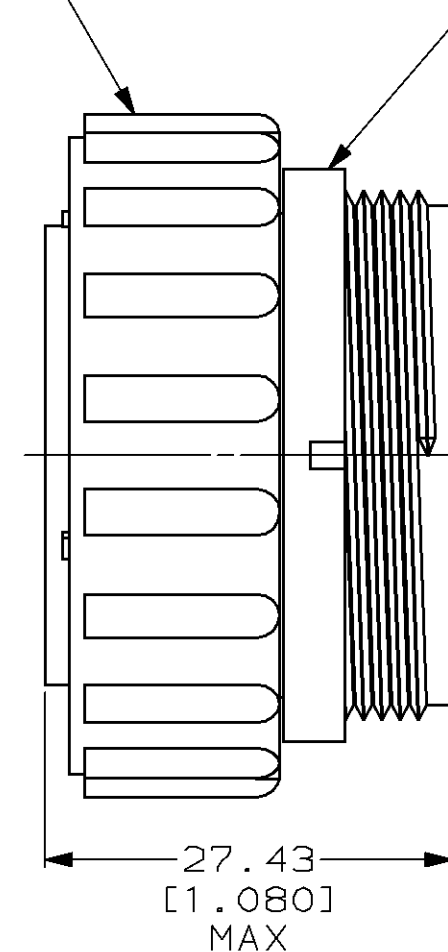
LOC	DIST	P	F	ZONE	LTR	DESCRIPTION	DATE	APPD
FT	4							
					0	RLSE PER NPR 5254 WAS 94-5029-029-01	01/04/95	AF
					A	REV PER EC 0020-68-95	02/08/95	AF
					B	REV PER EC 0320-7-97	16 JAN 97	KD



COUPLING RING
POLYESTER, BLACK

AMP & PART NO
ON THIS DIA

PLUG HOUSING
NYLON 6/6,
GLASS FILLED,
BLACK



213851-1

PART
NUMBER

- THIS CONNECTOR WILL ACCEPT (24) MULTIMATE SOCKET CONTACTS.
- CONTACT CAVITIES IDENTIFIED BY CHARACTERS ON FRONT AND REAR FACE OF CONNECTOR.

DO NOT SCALE PRINT. UNLESS SPECIFIED DIMENSIONS IN mm [INCHES] TOLERANCES ON: 2 PLC DEC ± 0.13 [0.005] 3 PLC DEC ± - ANGLES ± -	DR 01/04/95 K.FOLTZ	AMP AMP Incorporated Harrisburg, PA 17105-3608	
	CHK 01/09/95 R.STONE		
	APPD 01/10/95 T.COULSON	NAME PLUG ASSEMBLY, STANDARD SEX, SIZE 23, SERIES I, CPC	
	APPD 01/16/95 A.FRANTUN	SIZE B CAGE CODE 00779 DRAWING NO 213851	
MATERIAL SEE CALLOUT	PRODUCT SPEC -	SCALE 2:1	SHEET 1 OF 1
FINISH -	APPLICATION SPEC -		
	WEIGHT -		

单击下面可查看定价，库存，交付和生命周期等信息

[>>TE Connectivity\(泰科\)](#)