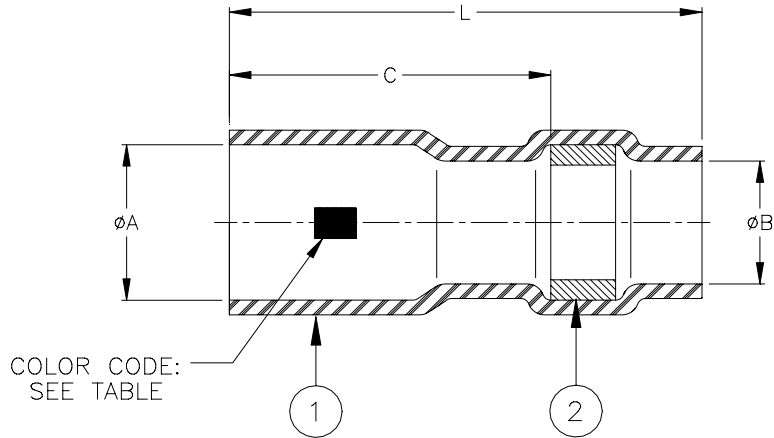


## SPECIFICATION CONTROL DRAWING



| Product Revision |   | Product Dimensions               |                 |                 |                 | Wire Accomodation* |                    | Color Code |
|------------------|---|----------------------------------|-----------------|-----------------|-----------------|--------------------|--------------------|------------|
| Product Name     |   | L $\pm 0.50$<br>(L $\pm 0.020$ ) | C<br>min        | $\phi A$<br>max | $\phi B$<br>min | One Wire<br>(AWG)  | Two Wires<br>(AWG) |            |
| D-141-0211       | D | 5.10<br>(0.200)                  | 2.30<br>(0.090) | 1.90<br>(0.075) | 0.89<br>(0.035) | 26, 28, 30         | 30                 | Red        |
| D-141-0212       | D | 5.10<br>(0.200)                  | 2.30<br>(0.090) | 2.10<br>(0.083) | 1.07<br>(0.042) | 22, 24             | 26, 28             | Blue       |

\* Variations in pin/wire geometry may require use of a different size sleeve in some instances. Consult Raychem for specific recommendations.

### MATERIALS

1. INSULATION SLEEVE: Heat shrinkable, transparent blue, radiation cross-linked polyvinylidene fluoride.
2. SOLDER PREFORM WITH FLUX:  
SOLDER: TYPE Sn63 per ANSI J-STD-006.  
FLUX: TYPE ROL1 per ANSI J-STD-004.

### APPLICATION

1. These parts are designed to attach wires having tin or silver plated stranded conductors to 0.60 (0.025) square wire wrapping posts.  
\*Wire Accomodation: See table.
2. Sleeve is to applied using the following Raychem tools:  
AD-1549 Installation tool and the RH-3900 Resistance Heater
3. For installation instructions, see Raychem Procedure RCPS-200-32.

|  |   |   |                 |   |            |                  |  |
|--|---|---|-----------------|---|------------|------------------|--|
| <b>tyco / Electronics / Raychem</b><br>307 Constitution Drive Menlo Park, CA 94025, USA              |   | <b>Wire and<br/>Harnessing<br/>Products</b>   |                 | TITLE :<br><b>SOLDERSLEEVE TERMINATOR<br/>FOR 0.60 x 0.60 (0.025 x 0.025)<br/>WIRE WRAPPING POSTS</b> |            |                  |  |
| UNLESS OTHERWISE SPECIFIED DIMENSIONS ARE IN MILLIMETERS.<br>INCHES DIMENSIONS ARE BETWEEN BRACKETS. |   |   |                 | DOCUMENT NO.: <b>D-141-0211/-0212</b>   |            |                  |  |
| TOLERANCES:<br>0.00 N/A<br>0.0 N/A<br>0 N/A  | ANGLES: N/A<br><br>ROUGHNESS IN<br>MICRON | Tyco Electronics reserves the right to<br>amend this drawing at any time. Users<br>should evaluate the suitability of the<br>product for their application. |                 | DCR NUMBER:<br>D010074  |            | REPLACES:<br>N/A |  |
| DRAWN BY:<br>M. FORONDA  | DATE:<br>04-Apr.-01                       | PROD. REV.<br>SEE TABLE   | DOC ISSUE:<br>1 | SCALE:<br>None  | SIZE:<br>A | SHEET:<br>1 of 1 |  |

If this document is printed it becomes uncontrolled. Check for the latest revision.

单击下面可查看定价，库存，交付和生命周期等信息

[>>TE Connectivity\(泰科\)](#)