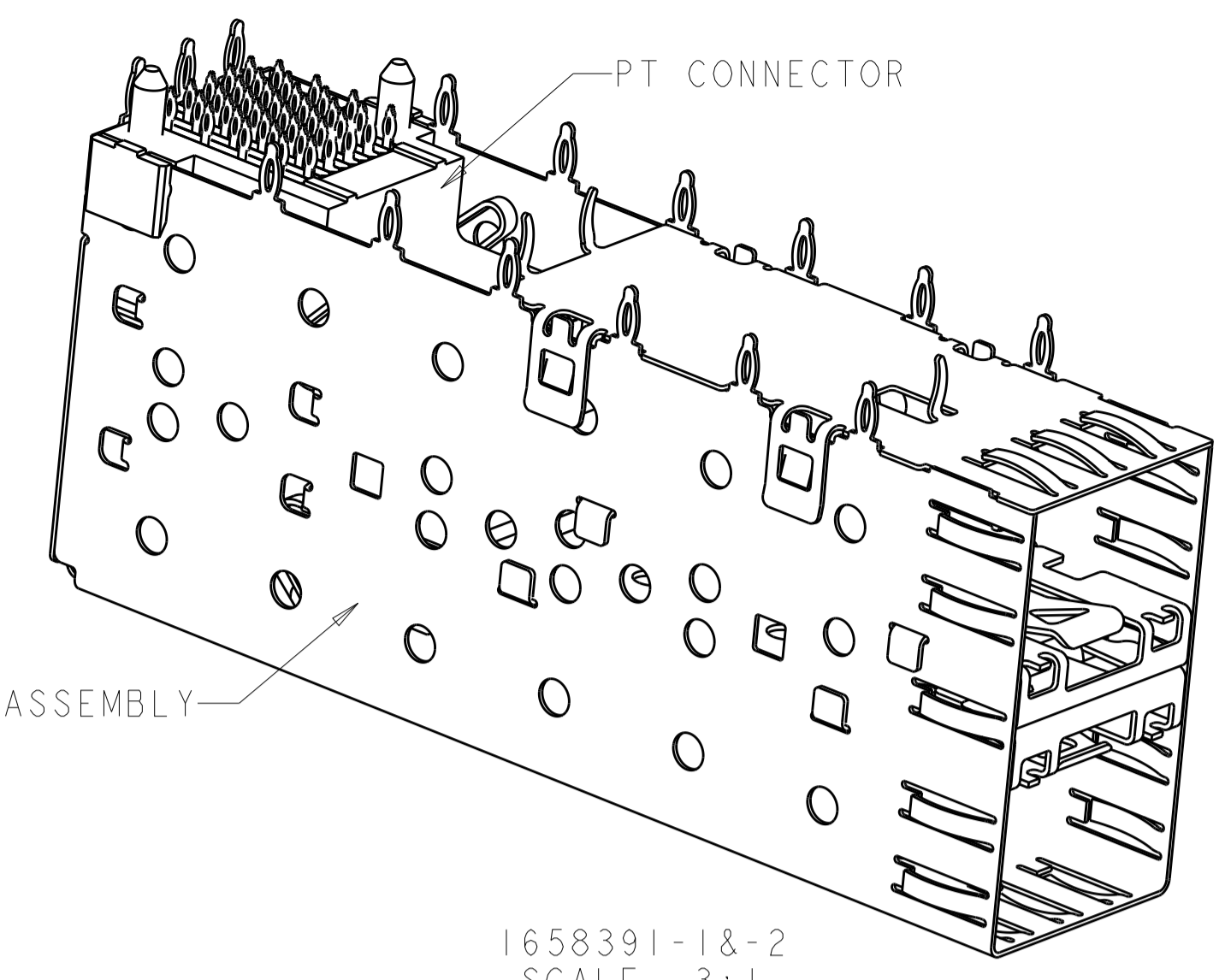
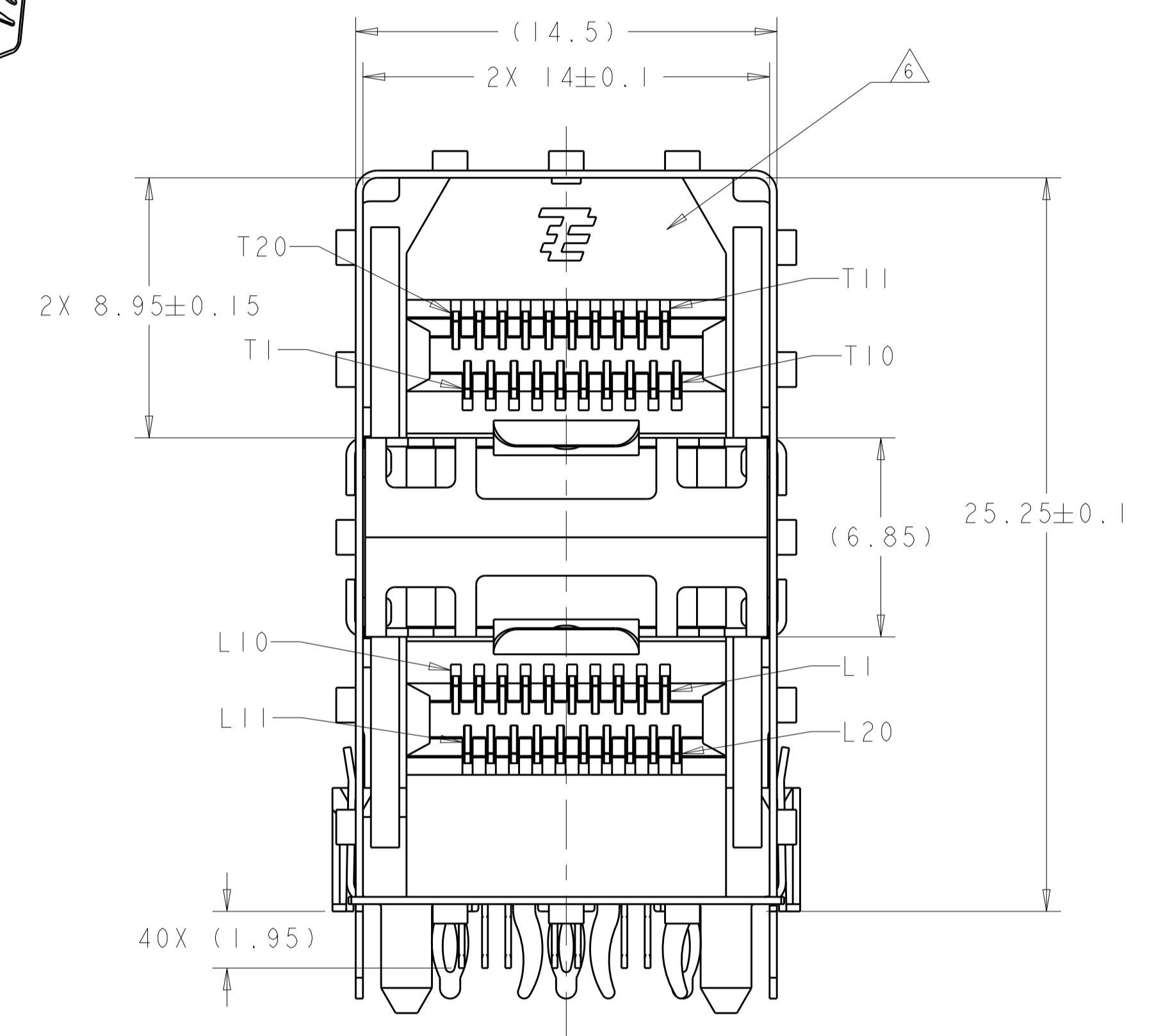
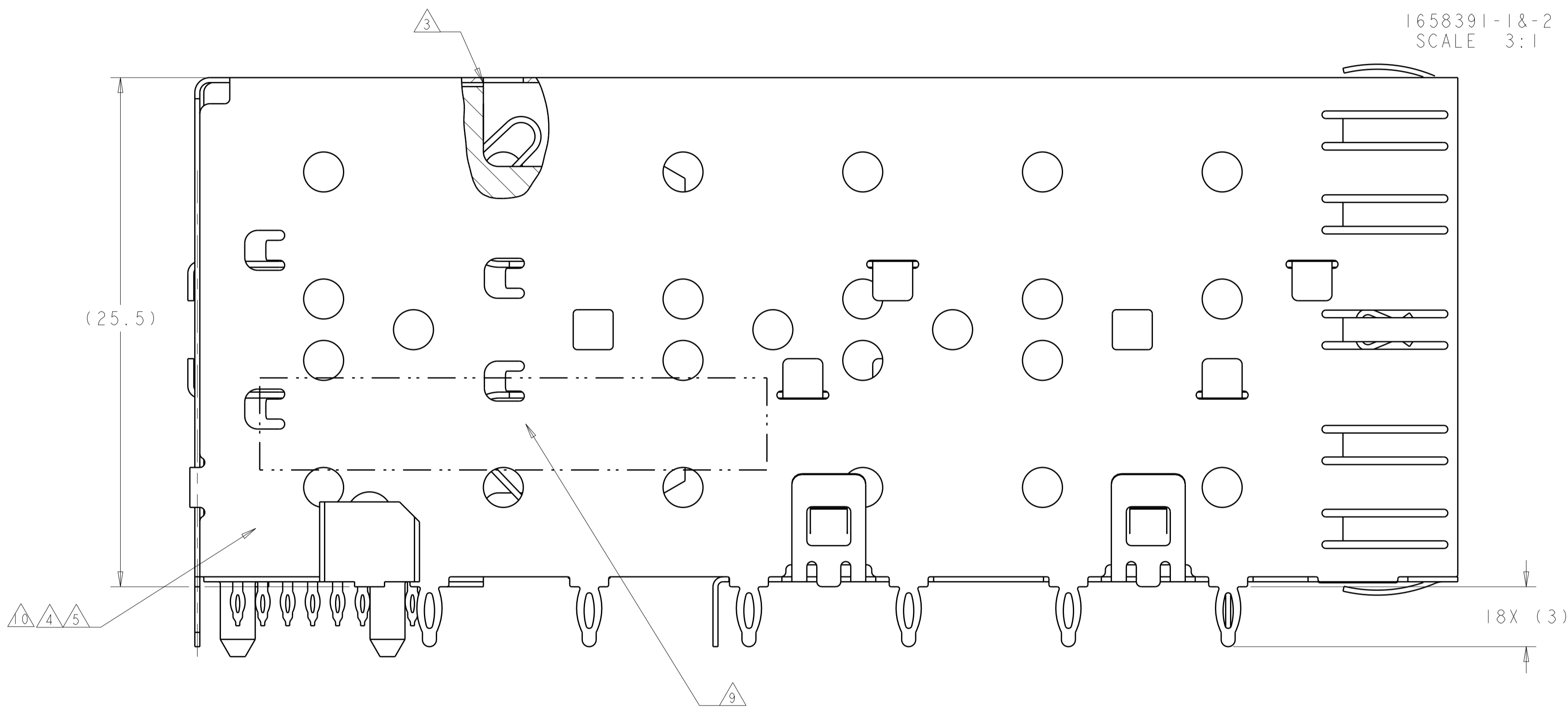


LOC	DIST	REVISIONS					
		P	LTN	DESCRIPTION	DATE	DWN	APVD
ES	00	F1		REVISED PER ECO-11-005033	18MAR2011	RK	HMR
		G		REVISED PER ECO-14-000886	20FEB2014	JW	SH
		G1		REVISED PER ECO-14-010419	11JUL2014	JW	SH
		H		REVISED PER ECO-15-013594	22SEP2015	JW	SH



2X1 CAGE ASSEMBLY

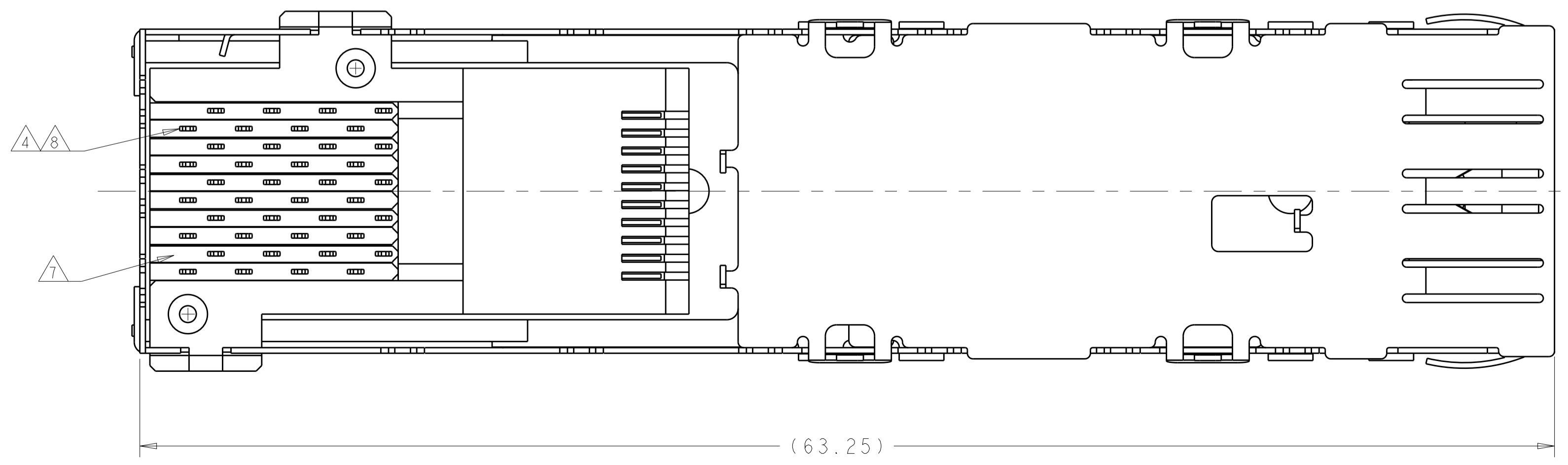
1658391-1&2
SCALE 3:1



- △ DATUM AND BASIC DIMENSION TO BE DETERMINED BY CUSTOMER.
- △ INTERPRETATION OF DATUM REFERENCE FRAME IN ACCORDANCE WITH SECT 4.4.1.1 OF ASME Y14.5M-1994.
- △ TOP OF PT CONNECTOR TO BE 0-0.15 FROM INSIDE SURFACE OF CAGE.
- △ COPPER ALLOY.
- △ 1.25umMIN TIN PER ASTM B 545 OVER NICKEL FLASH PER QQ-N-290. NON-PLATED EDGES PERMISSIBLE.
- △ LCP, HIGH TEMPERATURE, UL 94V-0 RATED, BLACK.
- △ POLYESTER, UL 94V-0 RATED, BLACK.
- △ CONTACT MATING AREA: SURFACE TREATMENT OVER 0.76um MIN GOLD PER ASTM B 488 OVER 1.27um MIN NICKEL PER QQ-N-290. NEEDLE EYE: 1.25um MIN TIN PER ASTM B 545 OVER 1.27um MIN NICKEL PER QQ-N-290. REMAINDER OF CONTACT: 0.76um MIN NICKEL PER QQ-N-290.
- △ DATE CODE AND PART NUMBER IN APPROXIMATE AREA SHOWN.
- △ MATERIAL: NICKEL SILVER ALLOY(NO PLATING)

SUPERSEDED BY:
1658391-2

CONNECTOR FINISH	CONNECTOR MATERIAL	CAGE FINISH	CAGE MATERIAL	1658391-2
NO	NO	NO	NO	1658391-2



THIS DRAWING IS A CONTROLLED DOCUMENT.

DIMENSIONS: mm

TOLERANCES UNLESS OTHERWISE SPECIFIED:

0 PLC	±
1 PLC	±0.1
2 PLC	±
3 PLC	±
4 PLC	±
ANGLES	±

MATERIAL FINISH

Customer Drawing

DWN: J.M. COWHER 25MAR03
 CH: J. KOPPENHEFFER 23JAN04
 APVD: M. WALMSLEY 23JAN04

NAME: CAGE AND PT CONNECTOR ASSEMBLY, 2x1, PRESS FIT, STANDARD PROFILE, SFP

SIZE: A100779
 CAGE CODE: 1658391
 DRAWING NO: 1658391-2

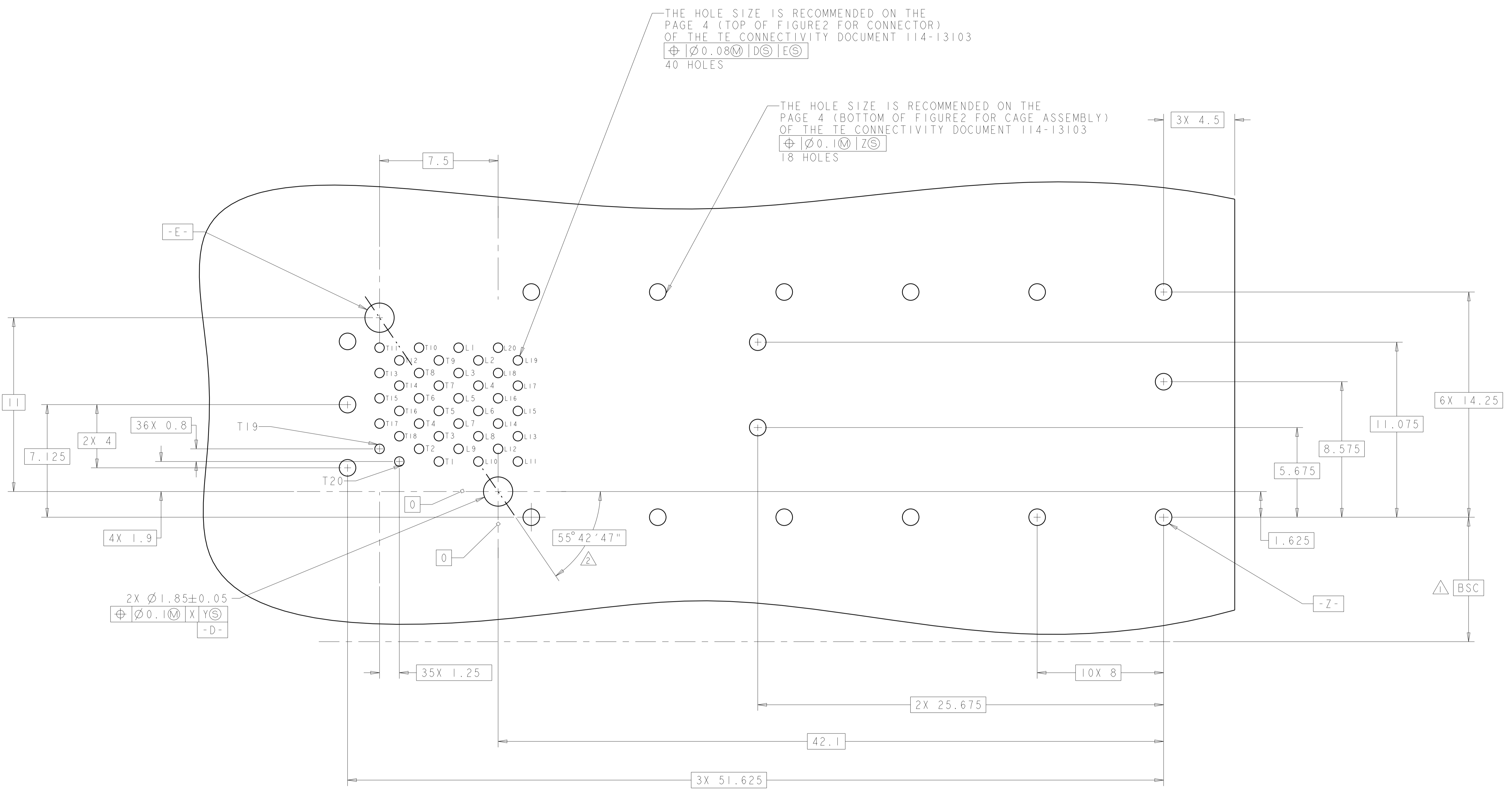
RESTRICTED TO: H

SCALE: 1:1 SHEET: 1 OF 3 REV: H

LOC		DIST		REVISIONS				
P	LTN	DESCRIPTION	DATE	DMN	APVD			
-	-	SEE SHEET 1	-	-	-			

THE HOLE SIZE IS RECOMMENDED ON THE PAGE 4 (TOP OF FIGURE2 FOR CONNECTOR) OF THE TE CONNECTIVITY DOCUMENT 114-13103
 $\oplus \varnothing 0.08 \text{ (M)} \text{ (DS)} \text{ (ES)}$
 40 HOLES

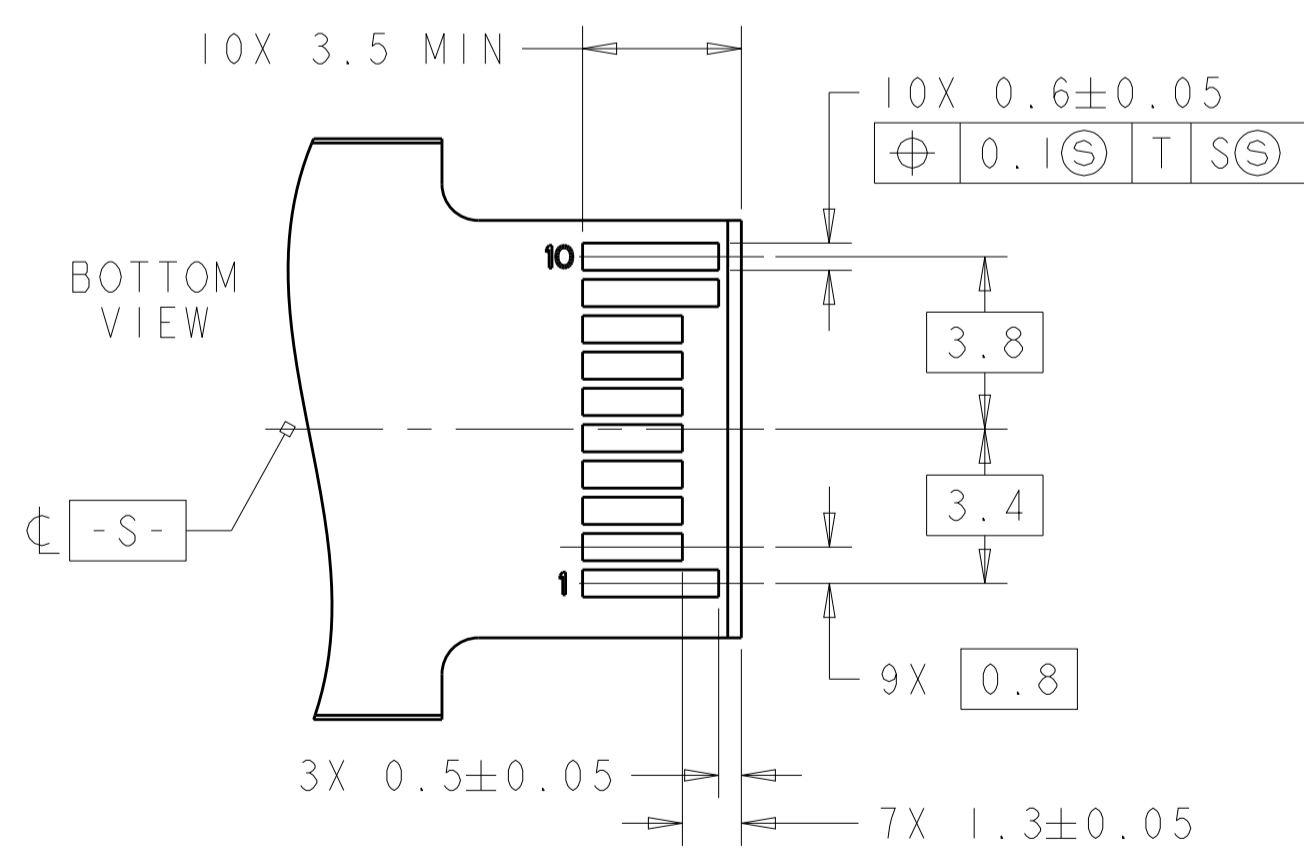
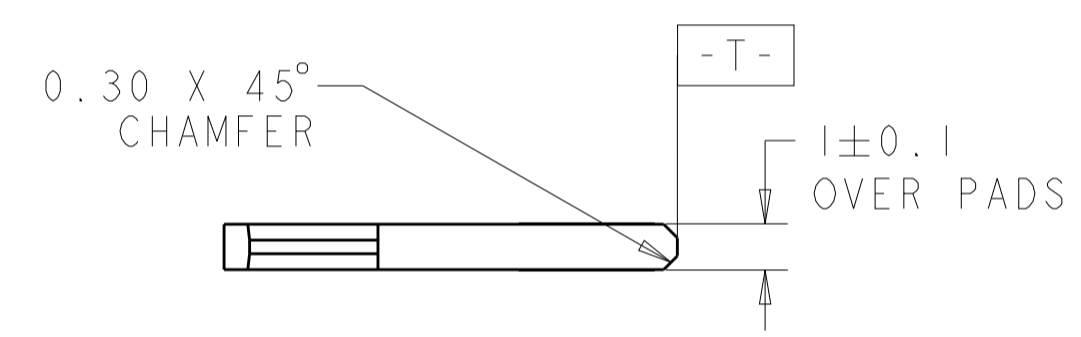
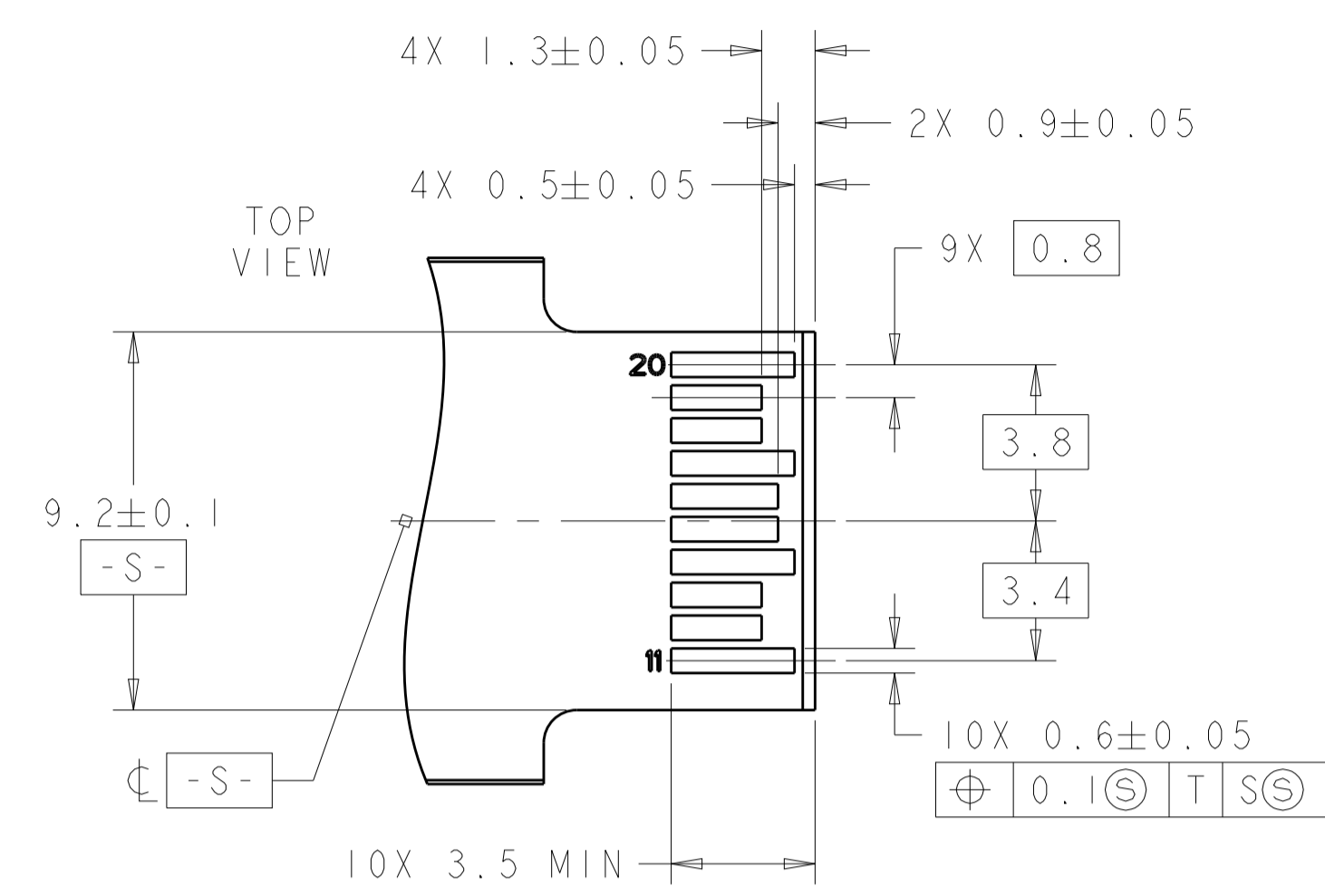
THE HOLE SIZE IS RECOMMENDED ON THE PAGE 4 (BOTTOM OF FIGURE2 FOR CAGE ASSEMBLY) OF THE TE CONNECTIVITY DOCUMENT 114-13103
 $\oplus \varnothing 0.1 \text{ (M)} \text{ (ZS)}$
 18 HOLES



SFP HOST BOARD
 MECHANICAL LAYOUT
 SCALE 8:1

THIS DRAWING IS A CONTROLLED DOCUMENT.		DMN: M. COWHER 25MAR03	TE Connectivity
DIMENSIONS: mm		CHK: J. KOPPENHEFFER 23JAN04	
TOLERANCES UNLESS OTHERWISE SPECIFIED:		APVD: M. WALMSLEY 23JAN04	NAME: CAGE AND PT CONNECTOR ASSEMBLY, 2x1, PRESS FIT, STANDARD PROFILE, SFP PRODUCT SPEC: 108-2161 APPLICATION SPEC: 114-13103 SIZE: CAGE CODE DRAWING NO: A100779 WEIGHT: - Customer Drawing
0 PLC ±		RESTRICTED TO:	
1 PLC ±0.1		SCALE: 1:1	
2 PLC ±		SHEET 2 OF 3	
3 PLC ±		REV H	
4 PLC ±			
ANGLES ±			
FINISH			

LOC		DIST		REVISIONS			
ES	00	P	LTN	DESCRIPTION	DATE	DWN	APVD
		-		SEE SHEET 1			



RECOMMENDED LAYOUT FOR
 MATING TRANSCEIVER PCB
 SCALE 6:1

THIS DRAWING IS A CONTROLLED DOCUMENT.		DWN	M. COWHER	25MAR03	TE Connectivity
DIMENSIONS:		CHK	J. KOPPENHEFFER	23JAN04	
mm	TOLERANCES UNLESS OTHERWISE SPECIFIED:	APVD	M. WALMSLEY	23JAN04	NAME CAGE AND PT CONNECTOR ASSEMBLY, 2x1, PRESS FIT, STANDARD PROFILE, SFP
	0 PLC ± 1 PLC ± 2 PLC ±0.1 3 PLC ± 4 PLC ± ANGLES ±	PRODUCT SPEC	108-2161	APPLICATION SPEC	
MATERIAL	FINISH	SIZE	114-13103	WEIGHT	RESTRICTED TO
		Customer Drawing	A100779	C=1658391	
		SCALE	8:1	SHEET	3 OF 3
				REV	H

单击下面可查看定价，库存，交付和生命周期等信息

[>>TE Connectivity\(泰科\)](#)