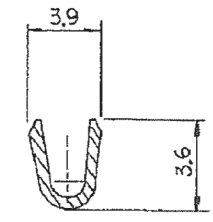
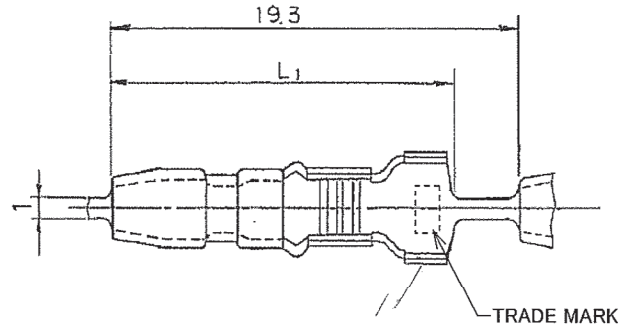
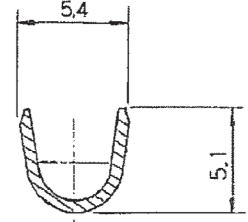


C-170002

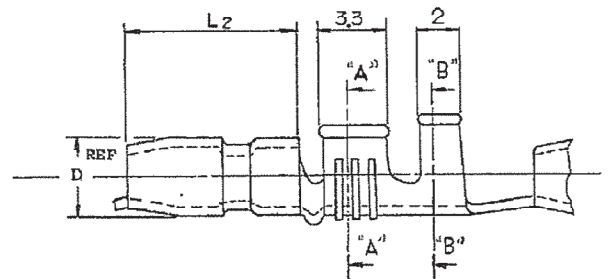
PRINT FIRST
DIM : 1:1 DIMENSIONS IN MM, DO NOT SCALE PRINT



SECT. A-A



SECT. B-B



NOTE
 ▲ THESE ITEMS ARE FOR USE OTHER THAN IN JAPAN.
 ▲ GENERAL TOLERANCES; ±0.4
 ▲ OBSOLETE PARTS: OBSOLETE CIS STREAMLINING PER D.RENAUD/D.SINISI

注記
 ▲ 海外向け製品。
 ▲ 一般公差; ±0.4

3	OBSELETE	1700028	17.0	8.7	4.0	7000	108-5003	BRASS	0.5F	PRE-TIN
	OBSELETE	31700024	17.0	8.7	4.0	15000	108-5003	PHOS-BZ	0.5F	POST-TIN
	OBSELETE	3-1	17.0	8.7	4.0	15000	-5003			
	OBSELETE	3-2	15.8	7.3	3.5	15000	-5004			POST-TIN
	OBSELETE	3-1	15.8	7.3	3.5	15000	-5004	PHOS-BZ	0.5F	
	OBSELETE	2-5	17.0	8.7	4.0	20000	-5003	BRASS	0.5F	
	OBSELETE	1-7	15.8	7.3	3.5	25000	-5004			
	OBSELETE	1-6	17.0	8.7	4.0	25000	-5003			
	OBSELETE	1-5	17.0	8.7	4.0	25000	-5003			
	OBSELETE	1-4	17.0	8.7	4.0	20000	-5003			POST-TIN
	OBSELETE	1-2	15.8	7.3	3.5	20000	-5004			POST-TIN
	OBSELETE	1-1	15.8	7.3	3.5	20000	-5004			
	OBSELETE	7	17.0	8.7	4.0	7000	-5004			
	OBSELETE	5	17.0	8.7	4.0	5000	-5003			
	OBSELETE	4	17.0	8.7	4.0	7000	-5003			POST-TIN
	OBSELETE	1700022	15.8	7.3	3.5	7000	108-5004	BRASS	0.5F	POST-TIN

PART NO.	LOOSE	PCS NO	L1 DIM	L2 DIM	D DIM	QTY/REEL	PROD SPEC NO.	MATERIAL	FINISH
TE Connectivity									
WIRE RANGE			INSULATION DIA.			NAME			
25-27 AWG			2.5-3.8 mm			シエアプラグ SHUR PLUG			
MATERIAL			FINISH			SIZE LOC # (NO)			
SEE TABLE			SEE TABLE			C J C-170002			
DR. <i>H. B. ...</i>			DE			REV. R3 SHEET 1-1			
LTR. 仕様 REVISION RECORD			DR. CHK. DATE			APP. <i>H. B. ...</i>			

R3	REVISED PER ECR-19-012286	PC	TD	20SEP19
R2	REVISED PER ECO-11-005030	RK	HMR	22MAR11
LTR.	仕様 REVISION RECORD	DR.	CHK.	DATE

(CUSTOMER DRAWING) 参考図面

单击下面可查看定价，库存，交付和生命周期等信息

[>>TE Connectivity\(泰科\)](#)