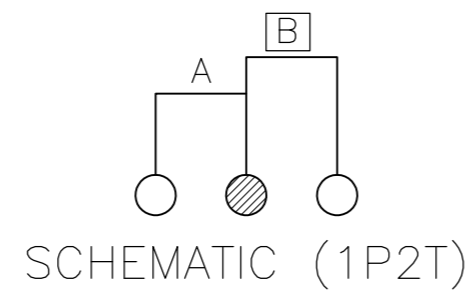
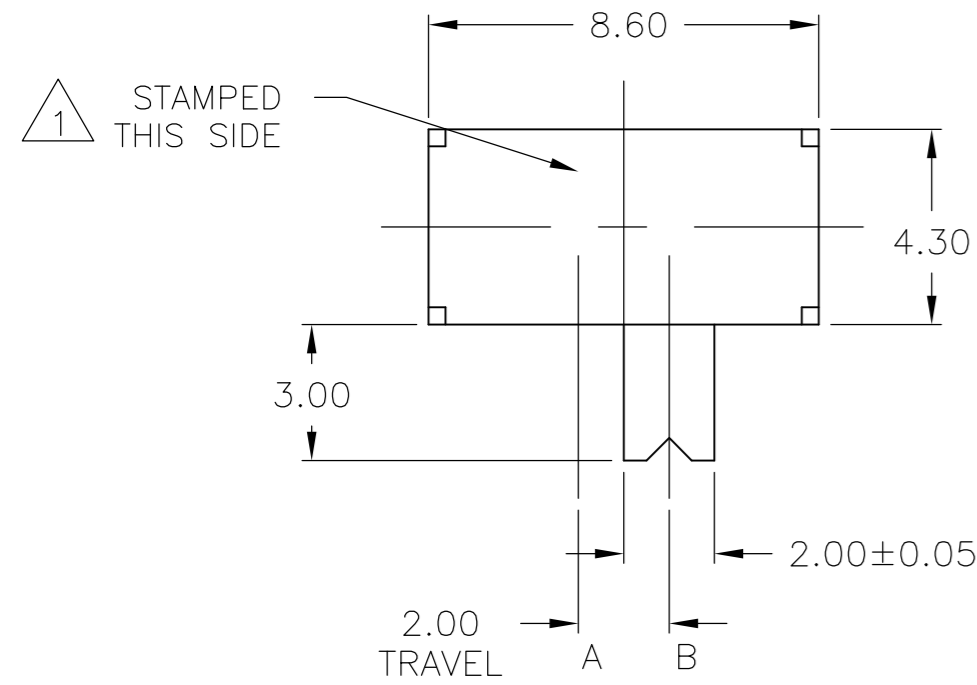


THIS DRAWING IS UNPUBLISHED. RELEASED FOR PUBLICATION
 © COPYRIGHT BY TYCO ELECTRONICS CORPORATION. ALL INTERNATIONAL RIGHTS RESERVED.

LOC		DIST		REVISIONS			
P	LTR	DESCRIPTION	DATE	DWN	APVD		
AD	00	B2	REVISED PER ECO-10-008611	24APR10	HMR	NE	



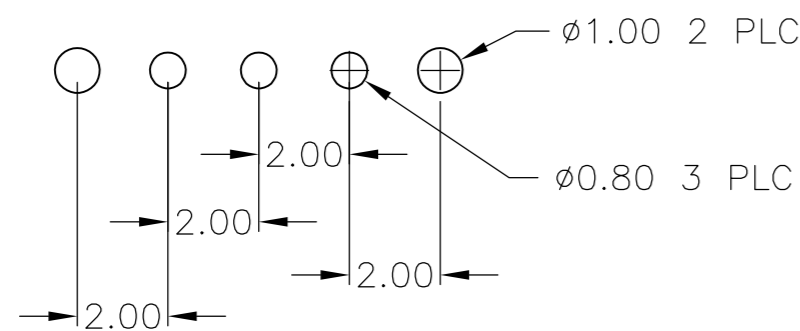
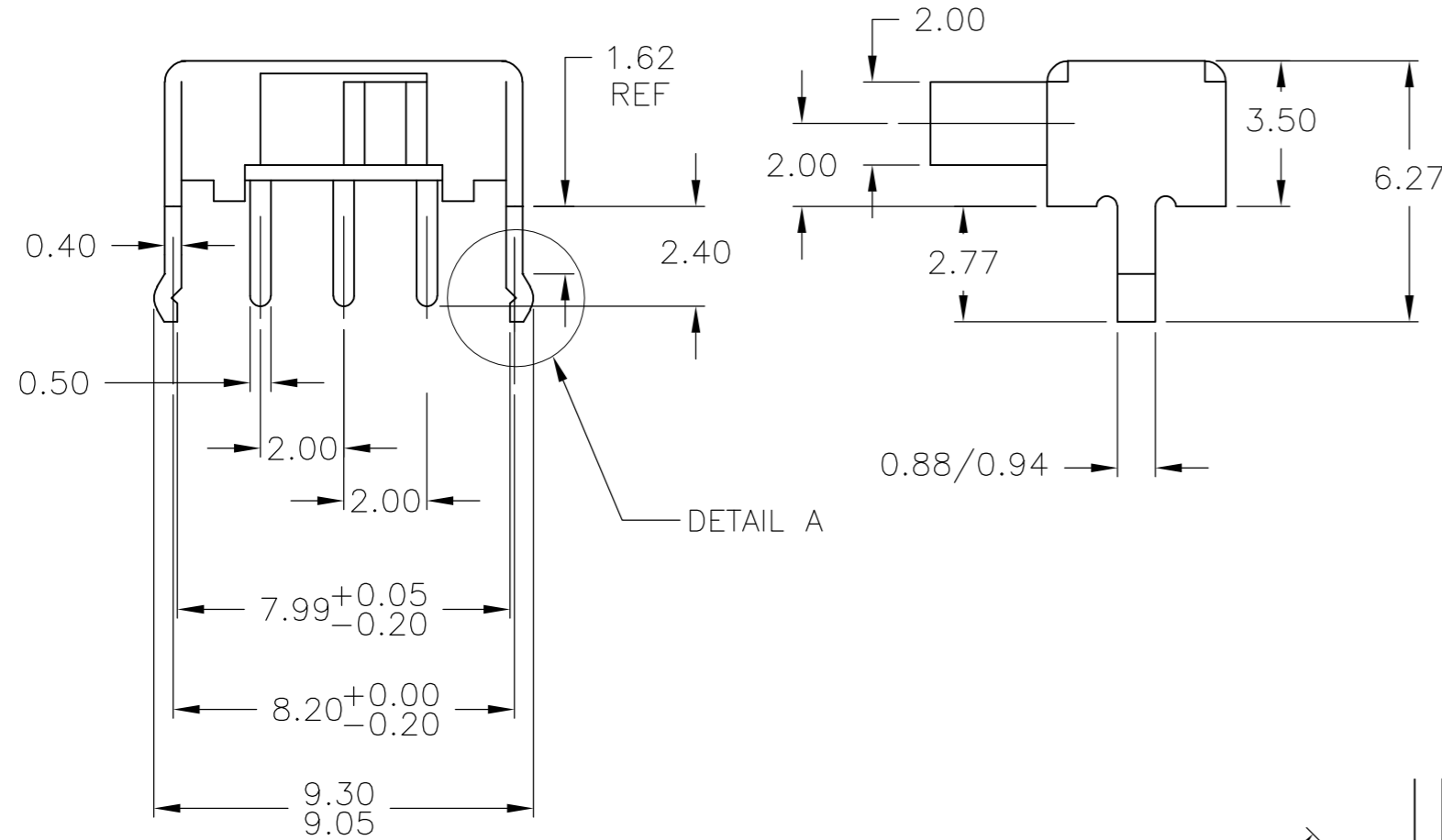
SPECIFICATIONS:
 SINGLE POLE DOUBLE THROW
 BREAK-BEFORE-MAKE

MATERIALS:
 FRAME: STEEL, TIN PLATE
 BOARD: PHENOLIC, NATURAL
 ACTUATOR: POM
 TERMINAL: COPPER ALLOY, FINISH: SILVER/NICKEL
 CONTACT: COPPER ALLOY, FINISH: SILVER

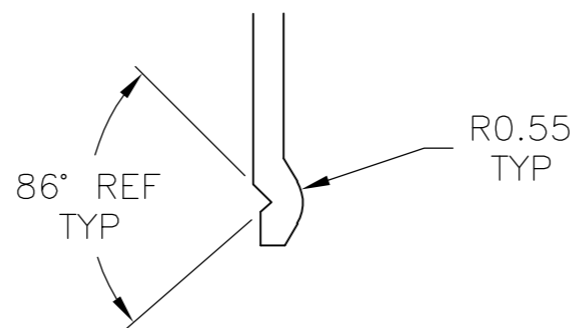
ELECTRICAL:
 CONTACT RATING, .2A@ 30V DC, PER EIA-448, METHOD 6
 INITIAL CONTACT RESISTANCE, 20 MILLIOHMS MAX, PER EIA-364-23B, EACH POSITION
 INSULATION RESISTANCE, 100 MEGOHM MIN. PER EIA-364-21C EACH POSITION
 DIELECTRIC STRENGTH, 500 VOLT AC, PER EIA-364-20B, CONDITION 1, EACH POSITION

MECHANICAL:
 ACTUATION FORCE, 200+/-100 GF
 ACTUATION TRAVEL, 2.0 MM
 LIFE EXPECTANCY, 10,000 CYCLES, PER EIA-448, METHOD 8 AND 9
 VIBRATION, PER EIA 364-28, CONDITION VII, LEVEL E
 MECHANICAL SHOCK, PER EIA-364-27, CONDITION A

ENVIRONMENTAL:
 OPERATING TEMPERATURE, -20 TO +70 DEGREES C, PER EIA 448, METHOD 10
 STORAGE TEMPERATURE, -25 TO +85 DEGREES C
 HUMIDITY AND TEMPERATURE CYCLING PER EIA-364-31B, METHOD III
 TEMPERATURE LIFE PER EIA-364-17B, METHOD B, TEMPERATURE TEST CONDITION 3, TIME CONDITION B
 THERMAL SHOCK, PER EIA-364-32C, -25 TO 85 DEGREES C
 SOLDERABILITY, PER EIA-364-52, CLASS 2, CATEGORY 1, 95% MINIMUM COVERAGE
 RESISTANCE TO SOLDER HEAT, PER 109-202, CONDITION B



RECOMMENDED HOLE LAYOUT



DETAIL A
 SCALE 10:1

- 1 COUNTRY OF ORIGIN AND TE LOGO LOCATED APPROXIMATELY AS SHOWN
- 2 ALL MATERIALS AND FINISHES SHALL COMPLY WITH EU DIRECTIVE 2002/95/EC OF 27JAN2003 (ROHS)".

1825232-1
 PART NUMBER

THIS DRAWING IS A CONTROLLED DOCUMENT.		DWN R BROWN 29MAR05	Tyco Electronics Corporation Harrisburg, PA 17105-3608	
DIMENSIONS: mm		CHK M SARVER 29MAR05		
TOLERANCES UNLESS OTHERWISE SPECIFIED:		APVD M SARVER 29MAR05	NAME SLIDE SWITCH, RIGHT ANGLE	
0 PLC ± - 1 PLC ± - 2 PLC ± 0.2 3 PLC ± - 4 PLC ± - ANGLES ± -		PRODUCT SPEC -	SIZE A2	CAGE CODE 00779
MATERIAL SEE NOTES		FINISH SEE NOTES	DRAWING NO C=1825232	RESTRICTED TO -
		WEIGHT -	SCALE 6:1	SHEET 1 OF 1
		CUSTOMER DRAWING	REV B2	

1825232

单击下面可查看定价，库存，交付和生命周期等信息

[>>TE Connectivity\(泰科\)](#)