



## Introducing Corcom DB Series

The Corcom DB Series is a new family of 60A inlet products for filtered applications up to 150 VDC and non-filtered applications up to 300 VDC. Filtered inlets are available in compact sizes with power filtering options for standard or high-performance applications. A filtered version with feedthrough capacitors is also available for improved performance in the high frequency range. Utilizing TE #4 AWG Elcon "drawer style" contacts, the filtered versions are pre-wired for easy customer termination with #6 AWG hi-flex stranded wire. Non-filtered plugs and receptacles are available with or without pre-terminated, hi-flex wire in standard lengths.





**KEY FEATURES**

- Compact connector for high-current DC applications
- Reliable performance in a compact assembly
- 60A DC current rating
- Polarized mating scheme
- Easy customer termination of power source
- Plug and receptacle available preterminated with standard wire lengths

**Applications**

- Rack mounted equipment
- Telecom
- Automotive equipment
- Electric Vehicles
- Battery charging systems
- Power supplies
- Light industrial applications

**STANDARDS AND SPECIFICATIONS**

- UL Recognized
- CSA Certified
- TUV Certified



**ELECTRICAL SPECIFICATIONS**

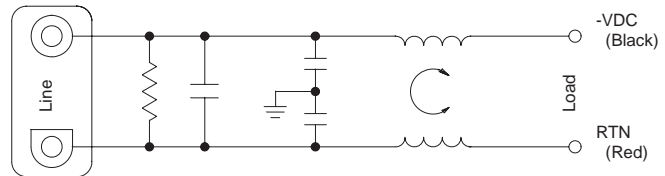
	Filtered models	DBR & DBP
Hipot rating (one minute):	Line to Ground:	2121 VDC
	Line to Line:	1768 VDC
Rated Voltage (max):	150 VDC*	300 VDC
Rated Current:	60A	

\*Certified to 120 VDC for TUV

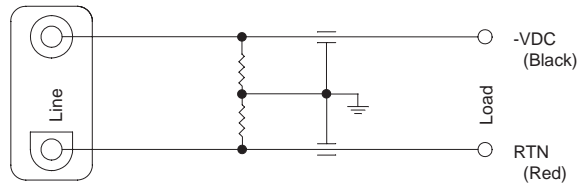
**WARNING**  
 This is not approved for hot swap or current interruption in DC applications. Doing so will result in irreparable damage to the contacts.

**ELECTRICAL SCHEMATICS**

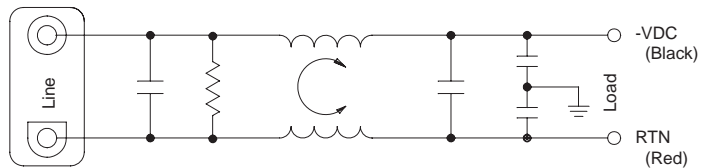
**DB8 & DBJ8**



**DBF8**



**DBX8**

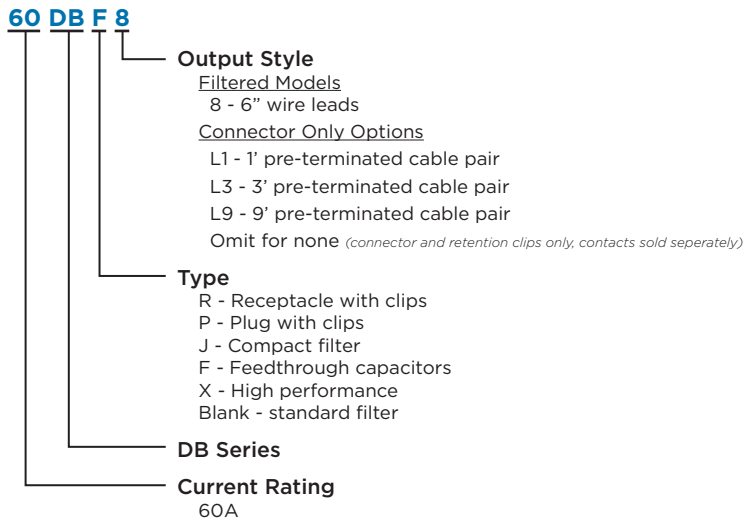


PRODUCT OFFERING

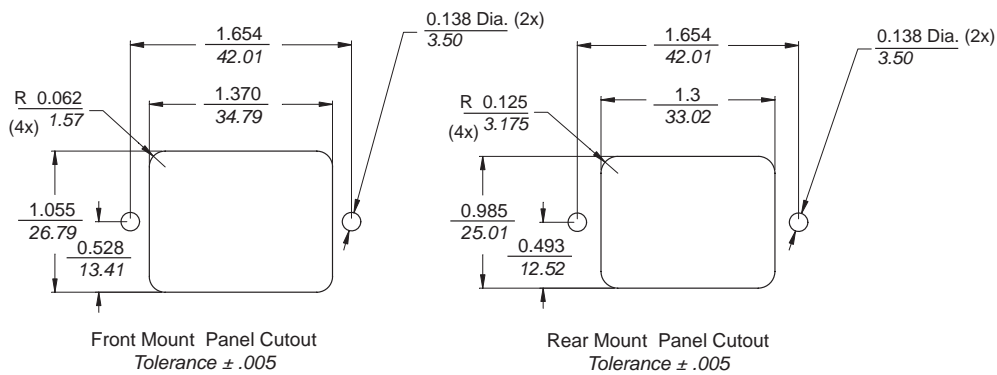
Filtered Versions				Accessories & Tooling	
4-1609075-4:	60DB8	4-1609075-5:	60DBF8	Single contact socket for use with 60DBP <sup>1</sup> :	6648434-1
4-1609075-6:	60DBJ8	4-1609075-7:	60DBX8	Single contact pin for use with 60DBR <sup>1</sup> :	1766232-1
<b>Connectors with pre-terminated wire leads</b>				Single reducer for #6 AWG wire with DBP/DBR contacts:	176813-1
4-1609075-9:	60DBPL1	6-1609075-4:	60DBRL1	Contact Insertion / Extraction Tool:	1643922-1
5-1609075-0:	60DBPL3	6-1609075-5:	60DBRL3	Crimp per TE specification:	114-13206
5-1609075-1:	60DBPL9			Crimp Tool:	M22520/23-01
<b>Connectors Only*</b>				Indenter head:	M22520/23-04
5-1609075-7:	60DBP	5-1609075-6:	60DBR	Locator:	M22520/23-11
* Includes molded connector and contact retention clips only. Contacts sold separately				DBP, DBR and DBJ8 connector locking kit <sup>2</sup> :	3-1609114-0
				60DB8, 60DBF8 and 60DBX8 connector locking kit <sup>2</sup> :	3-1609114-1

<sup>1</sup> Accommodates #4 AWG wire. 2 required per connector. Reducer required for #6 AWG sold separately  
<sup>2</sup> Prevents accidental separation of mated connectors

ORDERING INFORMATION

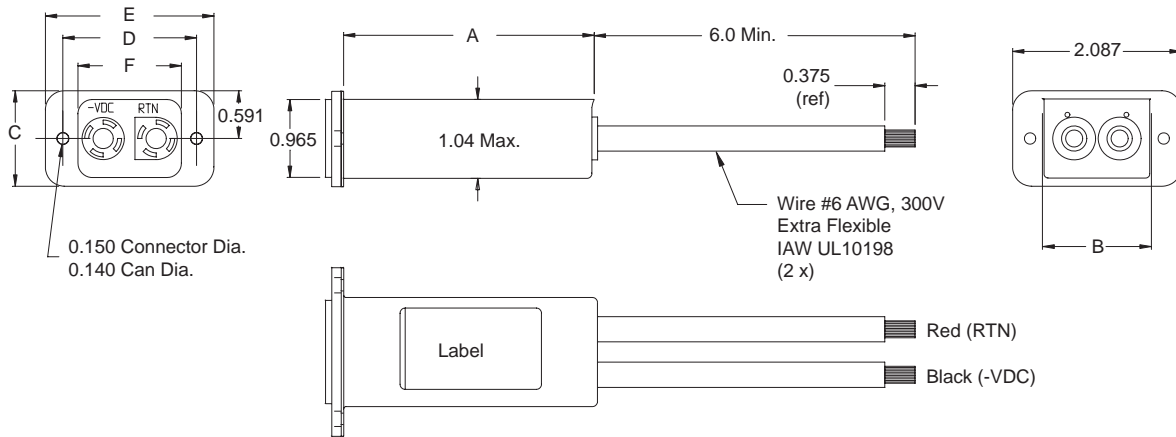


RECOMMENDED PANEL CUTOUT

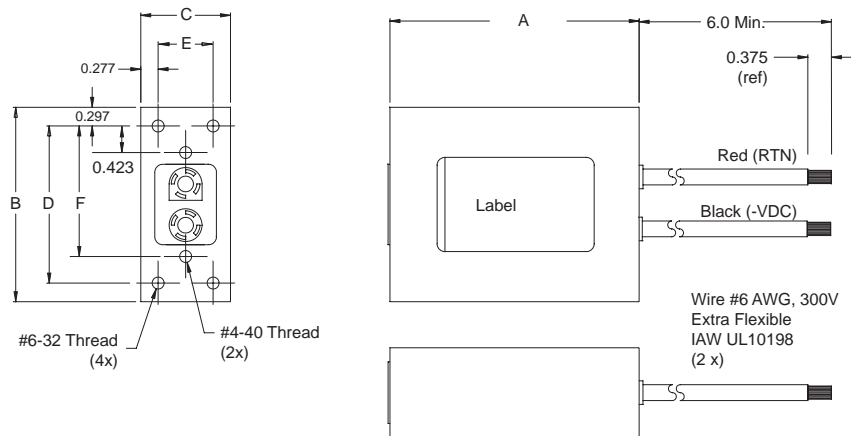


CASE STYLES

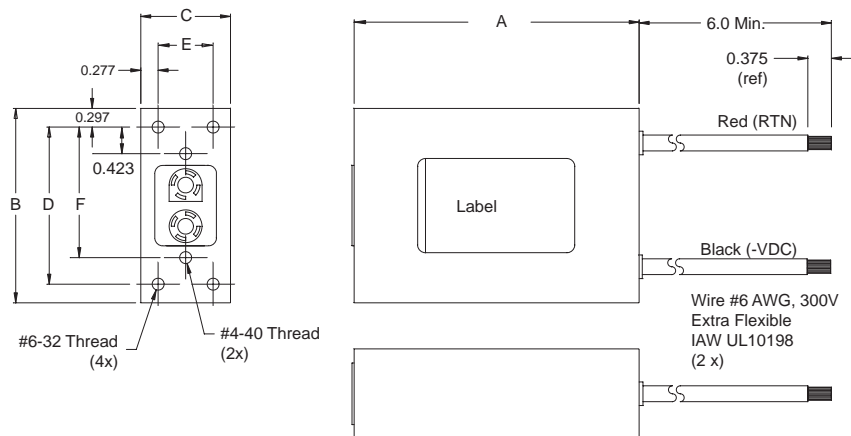
DBJ8



DB8 & DBF8

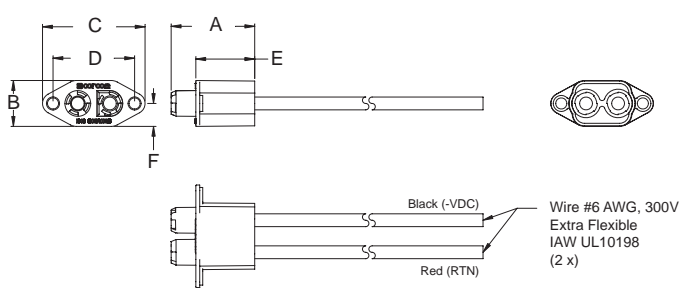


DBX8

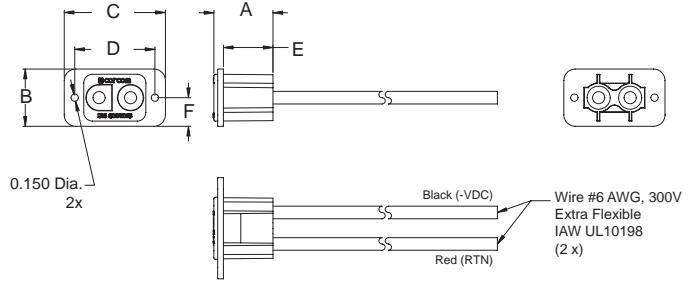


CASE STYLES

DBPL



DBRL



Minimum cable lengths:  
 DBRL1 / DBPL1: 12 [304.8]  
 DBRL3 / DBPL3: 36 [914.4]  
 DBPL9: 108 [2743.2]

CASE DIMENSIONS

Part Numbers	A (max)	B (max)	C ±.025 ±.635	D ±.025 ±.635	E ±.025 ±.635	F ±.025 ±.635
60DBJ8	3.2	1.36	1.181	1.654	2.087	1.28
	81.28	34.544	29.997	42.012	53.01	32.512
60DB8 60DBF8	4.06	3.20	1.45	2.50	0.875	2.077
	103.12	81.28	36.83	63.50	22.23	52.76
60DBX	6.06	3.50	1.45	2.876	0.875	2.265
	153.92	88.90	36.83	73.05	22.23	57.53
60DBRL	1.22*	1.181*	2.087	1.654	1.023	0.591
	30.99*	29.99*	53.009	42.011	25.984	15.011
60DBPL	1.695*	0.93*	2.08	1.654	1.195	0.465
	43.05*	23.62*	52.832	42.011	30.353	11.811

\* ±0.025 [0.635]

PERFORMANCE DATA

Minimum Insertion LOSS - Measured in closed 50 Ohm system

Common Mode / Asymmetrical (Line to Ground)

Part No.	Frequency - MHz									
	.1	.15	.5	1	5	1	20	30	50	100
60DBJ8	-	-	-	1	13	21	30	40	30	20

Differential Mode / Symmetrical (Line to Line)

Part No.	Frequency - MHz									
	.1	.15	.5	1	5	1	20	30	50	100
60DBJ8	5	8	19	26	34	26	20	16	-	-

Part No.	Frequency - MHz									
	.05	.1	.15	.5	1	3	5	10	20	30
60DB8	2	7	10	23	30	48	38	28	20	16
60DBF8	15	22	25	35	42	50	58	54	38	36
60CBX8	-	10	16	40	48	54	60	51	40	36

Part No.	Frequency - MHz									
	.05	.1	.15	.5	1	3	5	10	20	30
60DB8	20	26	29	43	53	30	30	24	20	18
60DBF8	9	15	18	30	34	40	44	44	48	52
60CBX8	31	30	30	70	70	54	50	60	54	50

## FOR MORE INFORMATION

corcom.com

### TE Technical Support Center

Internet: [te.com/help](http://te.com/help)  
USA: +1 (800) 522-6752  
Canada: +1 (905) 475-6222  
Mexico: +52 (0) 55-1106-0800  
Latin/S. America: +54 (0) 11-4733-2200  
Germany: +49 (0) 6251-133-1999  
UK: +44 (0) 800-267666  
France: +33 (0) 1-3420-8686  
Netherlands: +31 (0) 73-6246-999  
China: +86 (0) 400-820-6015

Part numbers in this brochure are RoHS Compliant\*, unless marked otherwise.

\*as defined [www.te.com/leadfree](http://www.te.com/leadfree)

### te.com

© 2011 Tyco Electronics Corporation, a TE Connectivity Ltd. company. All Rights Reserved.

1773455-2 CIS JG 07/2011

Corcom, TE Connectivity, TE connectivity (logo) and TE (logo) are trademarks. Other logos, product and/or company names might be trademarks of their respective owners.

---

While TE has made every reasonable effort to ensure the accuracy of the information in this brochure, TE does not guarantee that it is error-free, nor does TE make any other representation, warranty or guarantee that the information is accurate, correct, reliable or current. TE reserves the right to make any adjustments to the information contained herein at any time without notice. TE expressly disclaims all implied warranties regarding the information contained herein, including, but not limited to, any implied warranties of merchantability or fitness for a particular purpose. The dimensions in this catalog are for reference purposes only and are subject to change without notice. Specifications are subject to change without notice. Consult TE for the latest dimensions and design specifications.



单击下面可查看定价，库存，交付和生命周期等信息

[>>TE Connectivity\(泰科\)](#)