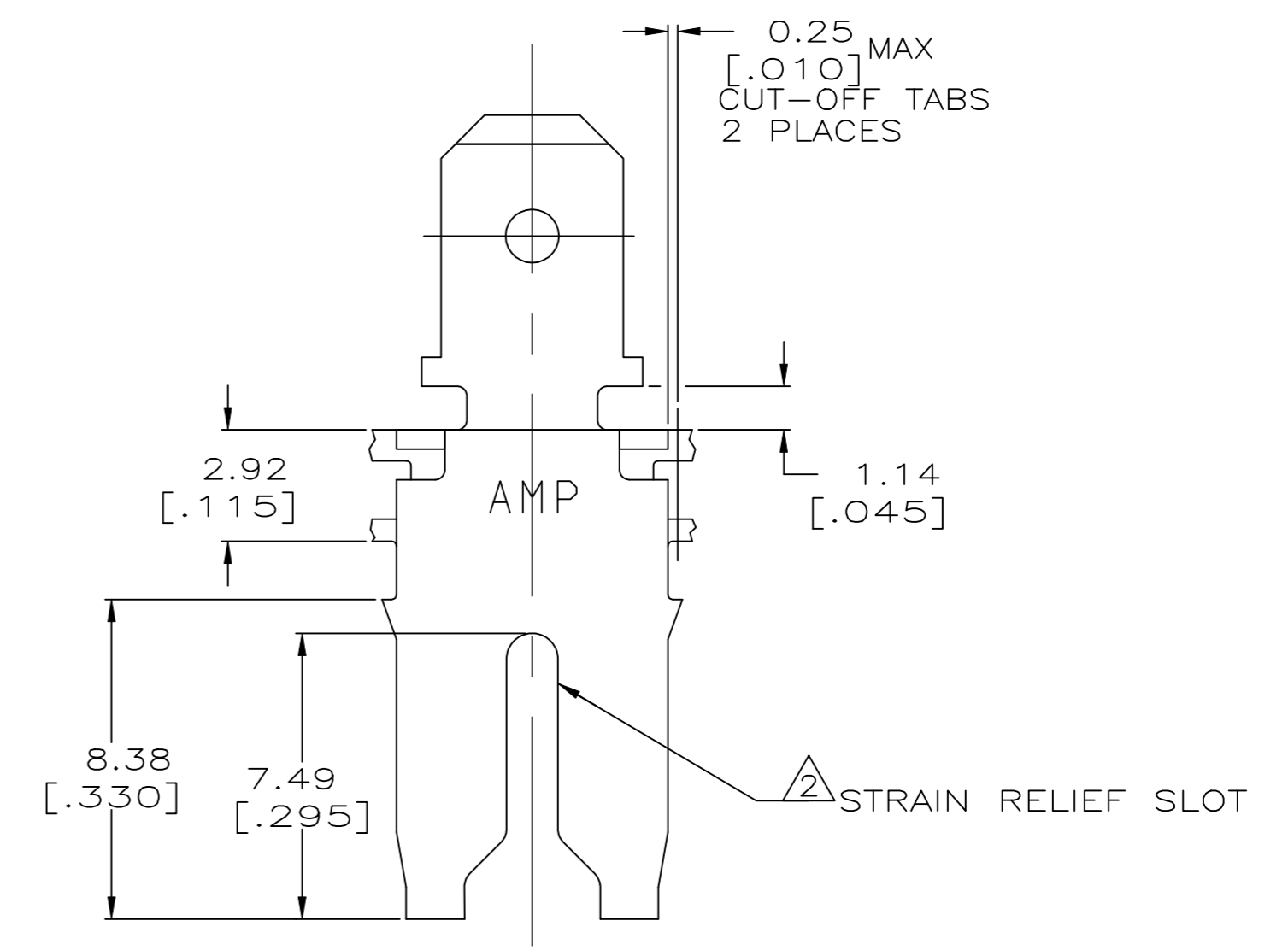
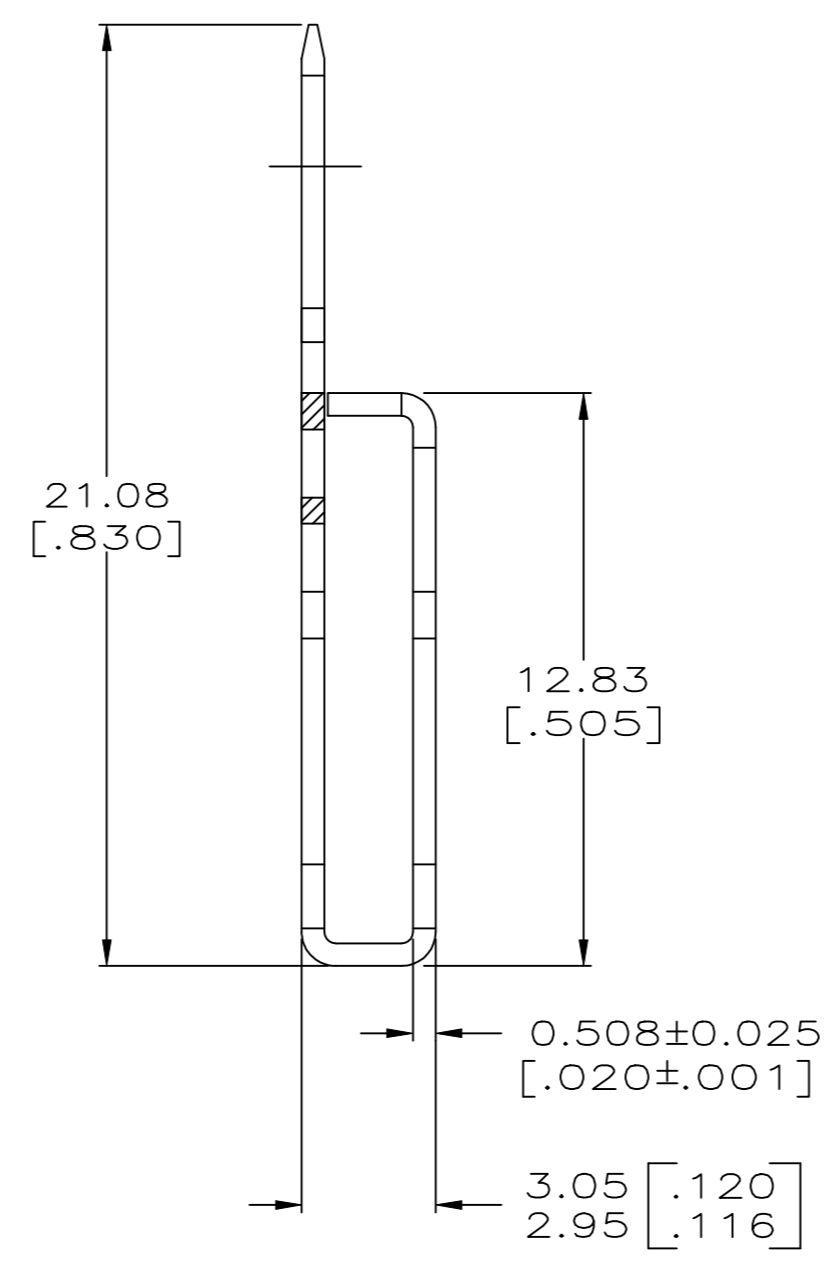
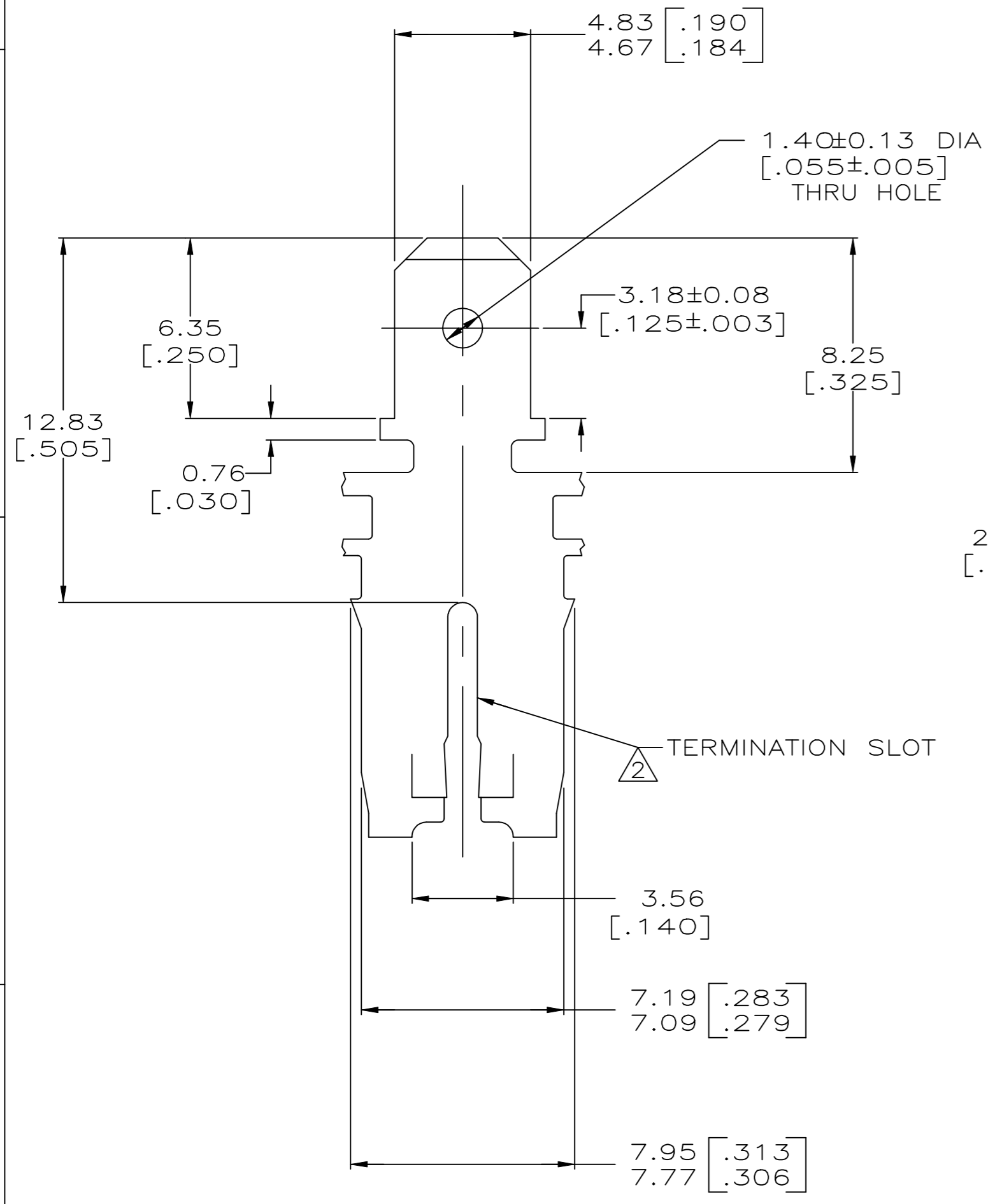
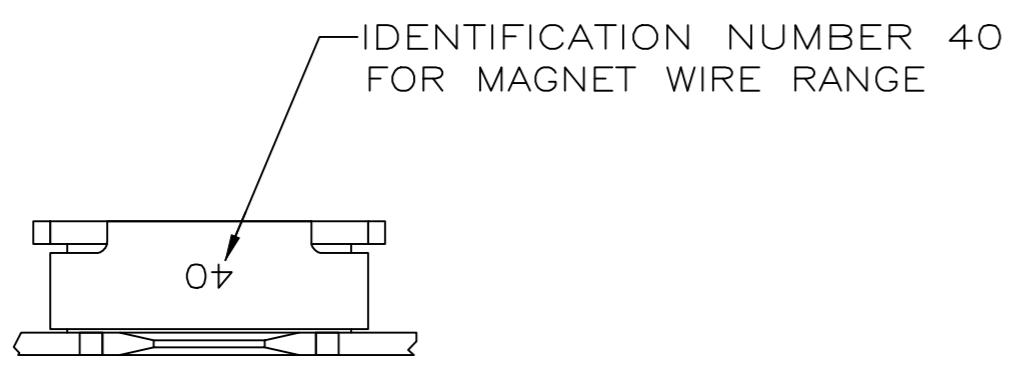


THIS DRAWING IS UNPUBLISHED. RELEASED FOR PUBLICATION  
 © COPYRIGHT - TE Connectivity Ltd. ALL RIGHTS RESERVED.

REVISIONS				
P	LTR	DESCRIPTION	DATE	APVD
	D	INTERNAL REVISION CHANGE	28JUN2018	SV

- CONTINUOUS STRIP ON REELS WITH TERMINALS LOCATED ON 8.38±0.08 [.330±.003] CENTERS.
- △ SLOT TERMINATES EITHER A SINGLE OR DOUBLE MAGNET WIRE OF THE SAME SIZE AND TYPE. COPPER RANGE: 1.29-1.45mm [#16-#15] AWG.
- AFTER INSERTION INTO PLASTIC HOLDER, TAB PORTION MUST BE BENT OVER 45° TO 90° OR POTTED-IN TO PREVENT PULL-OUT WHEN MATING RECEPTACLE IS DISCONNECTED.



63996-1  
PART NUMBER

THIS DRAWING IS A CONTROLLED DOCUMENT.		DWN MICHAEL S. FEHER 12JUN97	TE Connectivity	
DIMENSIONS: INCHES		CHK RICHARD GRZYBOWSKI 18JUN97	NAME Nelson E. Neff	
TOLERANCES UNLESS OTHERWISE SPECIFIED:		APVD NELSON E. NEFF 18JUN97	PRODUCT SPEC 108-2053	
0 PLC ± -	1 PLC ± -	APPLICATION SPEC 114-2066	SIZE A2	CAGE CODE 00779
2 PLC ± 0.25[.010]	3 PLC ± -	WEIGHT 0	DRAWING NO C=63996	RESTRICTED TO -
4 PLC ± -	ANGLES ± -	MATERIAL BRASS	SCALE 6:1	SHEET 1 of 1
FINISH TIN PLATED		CUSTOMER DRAWING		REV D

单击下面可查看定价，库存，交付和生命周期等信息

[>>TE Connectivity\(泰科\)](#)