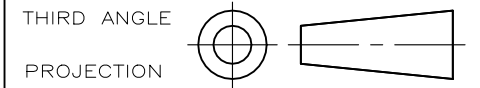


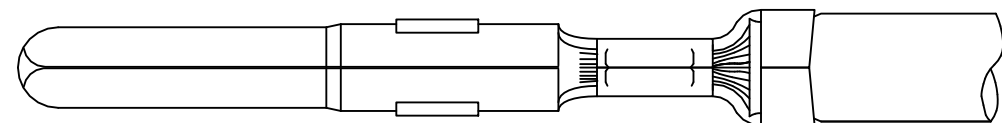
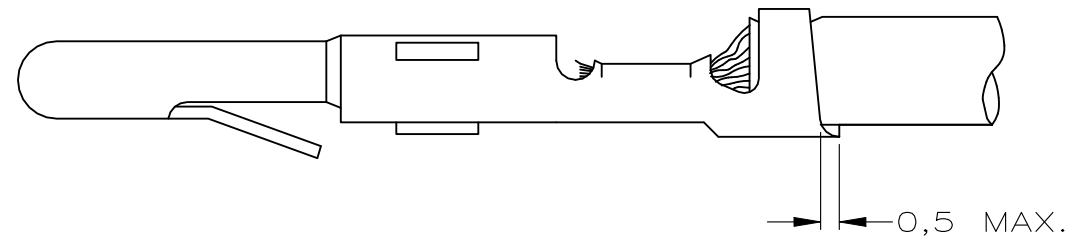
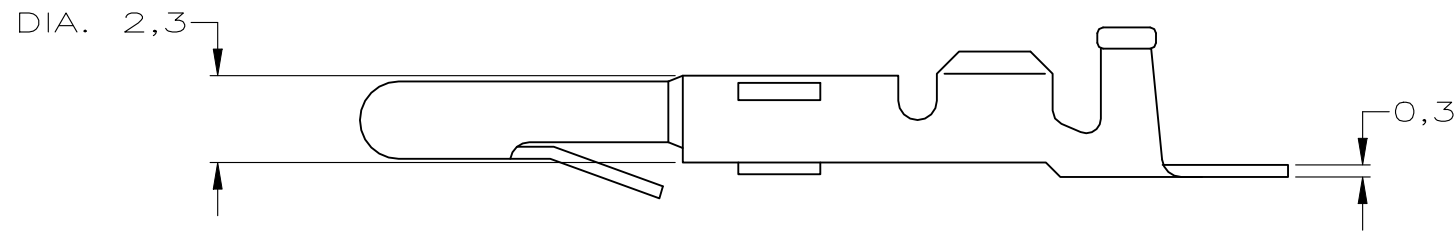
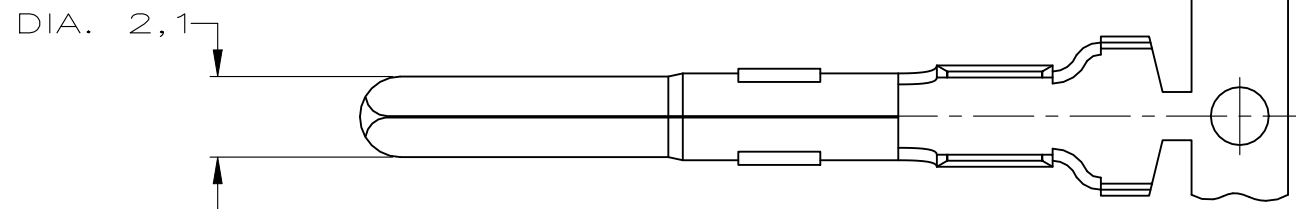
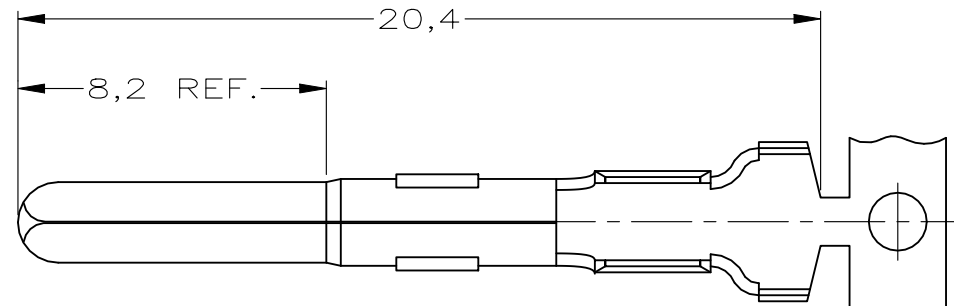
DO NOT SCALE
DIMENSIONS IN mm

METRIC



NOTES:

- ① FOR USE ON STANDARD APPLICATORS (RIGHT- LEFT FEED).
- ② FOR USE ON MINIATURE APPLICATORS (LEFT- RIGHT FEED)
- ③ OBSOLETE



WIRE RANGE :
0,3-0,75mm
INSULATION RANGE :
1,4-2,4 DIA.

NOTES	PLATING	MATERIAL	PARTNUMBER
②	PRE-TINPLATED	PHOSPHOR BR.	163555-8
②	UNPLATED	PHOSPHOR BR.	163555-7
②	PRE-TINPLATED	BRASS	163555-6
②	UNPLATED	BRASS	163555-5
①	PRE-TINPLATED	PHOSPHOR BR.	163555-4 ③
①	UNPLATED	PHOSPHOR BR.	163555-3
①	PRE-TINPLATED	BRASS	163555-2
①	UNPLATED	BRASS	163555-1

CUSTOMER DRAWING					FOR REFERENCE ONLY WILL NOT BE UPDATED	
© COPYRIGHT 19 - BY AMP HOLLAND B.V.					ALL INTERNATIONAL RIGHTS RESERVED. AMP PRODUCTS MAY BE COVERED BY U.S. AND FOREIGN AND/OR PATENTS PENDING.	
THIS DRAWING IS UNPUBLISHED					RELEASED FOR PUBLICATION .19	
AMP					AMP HOLLAND B.V. 's-Hertogenbosch, The Netherlands.	
B1	ECR-21-101087	PJ	VS	11MAY2021	NAME	
B	EH-1221-96	JvL	AB	24-10-96	PIN MATE-N-LOK.	
LTR.	REVISION RECORD	DR.	CHK.	DATE		
DR.:	J.v.LIEMPT	CHK.:	A.BIJNEN.	APP.:	M.v.DRIEL	DWG.No.
DATE:	24 OCT 96	DATE:	-	DATE:	-	C-163555
						REV.LTR.
						B1
						SHEET
						1 OF 1
						A3

单击下面可查看定价，库存，交付和生命周期等信息

[>>TE Connectivity\(泰科\)](#)