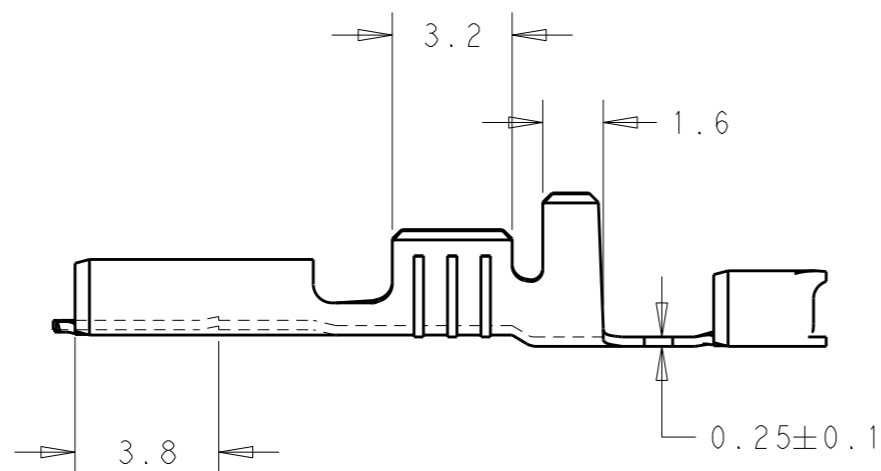
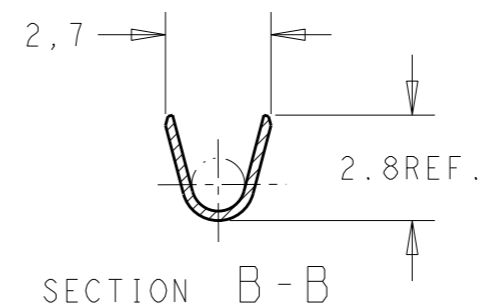
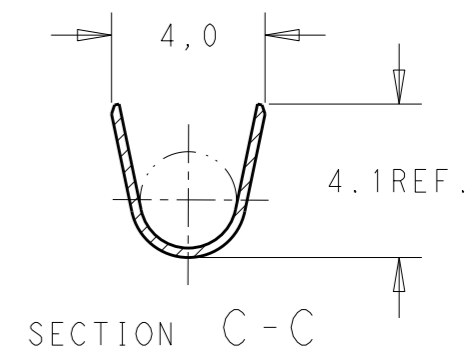
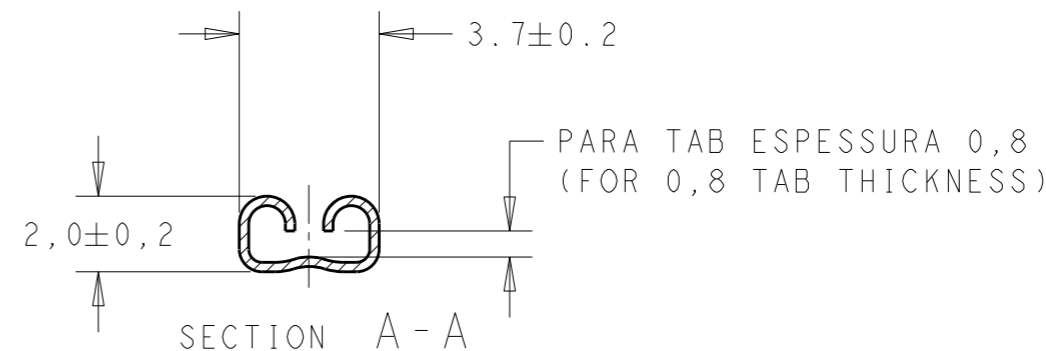
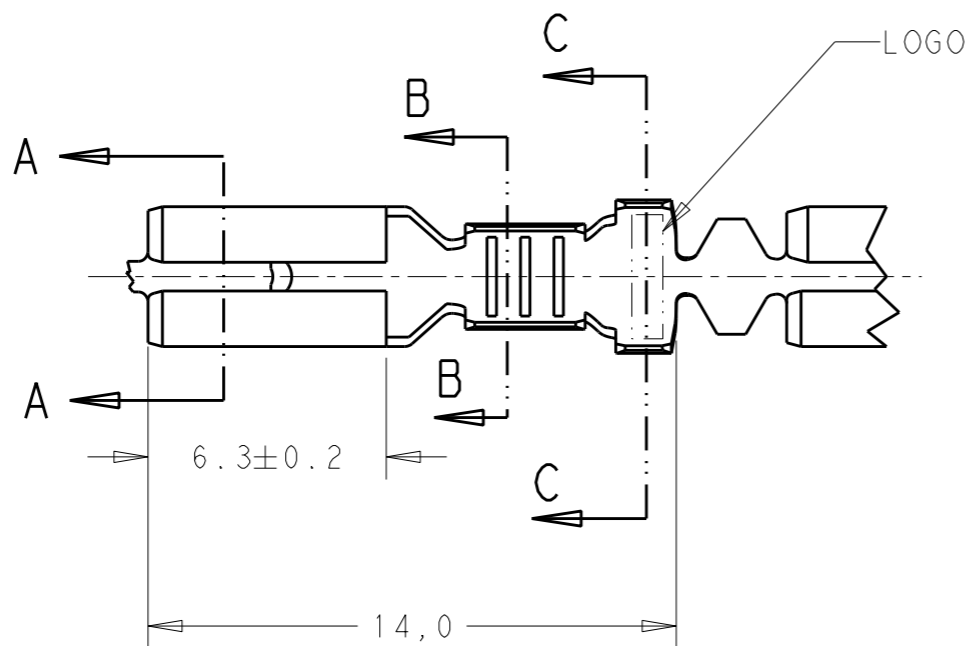


LOC	DIST	REVISIONS				
P	LTR	DESCRIPTION	DATE	DWN	APVD	
AP	-					
	R2	REV. BY ECO-12-013683	26JUL2012	HC	WLS	



626060-2	ESTANHADO/TIN-PLATED	LATÃO/BRASS	626041-2
626060-1	-	LATÃO/BRASS	626041-1
LOOSE PIECE	FINISH	MATERIAL	PART NUMBER

INS. RANGE: 2,03-3,04mm ²	WIRE RANGE: 0,5-1,5 mm ²
---	--

THIS DRAWING IS A CONTROLLED DOCUMENT.		DWN H.C.CANTERI 24JUL2012	STE TE Connectivity	
		CHK W.L.STEFANI 26JUL2012		
DIMENSIONS: mm	TOLERANCES UNLESS OTHERWISE SPECIFIED:	APVD -	NAME .110 SERIES FASTON RECEPTACLE	
	0 PLC ± 1 PLC ±0,3 2 PLC ± 3 PLC ± 4 PLC ± ANGLES ±	PRODUCT SPEC 108-37014	RESTRICTED TO	
MATERIAL -	FINISH -	APPLICATION SPEC 114-2036	SIZE A3	CAGE CODE 00779
		WEIGHT -	DRAWING NO C-626041	
		CUSTOMER DRAWING	SCALE 5:1	SHEET 1 OF 1
				REV R2

单击下面可查看定价，库存，交付和生命周期等信息

[>>TE Connectivity\(泰科\)](#)