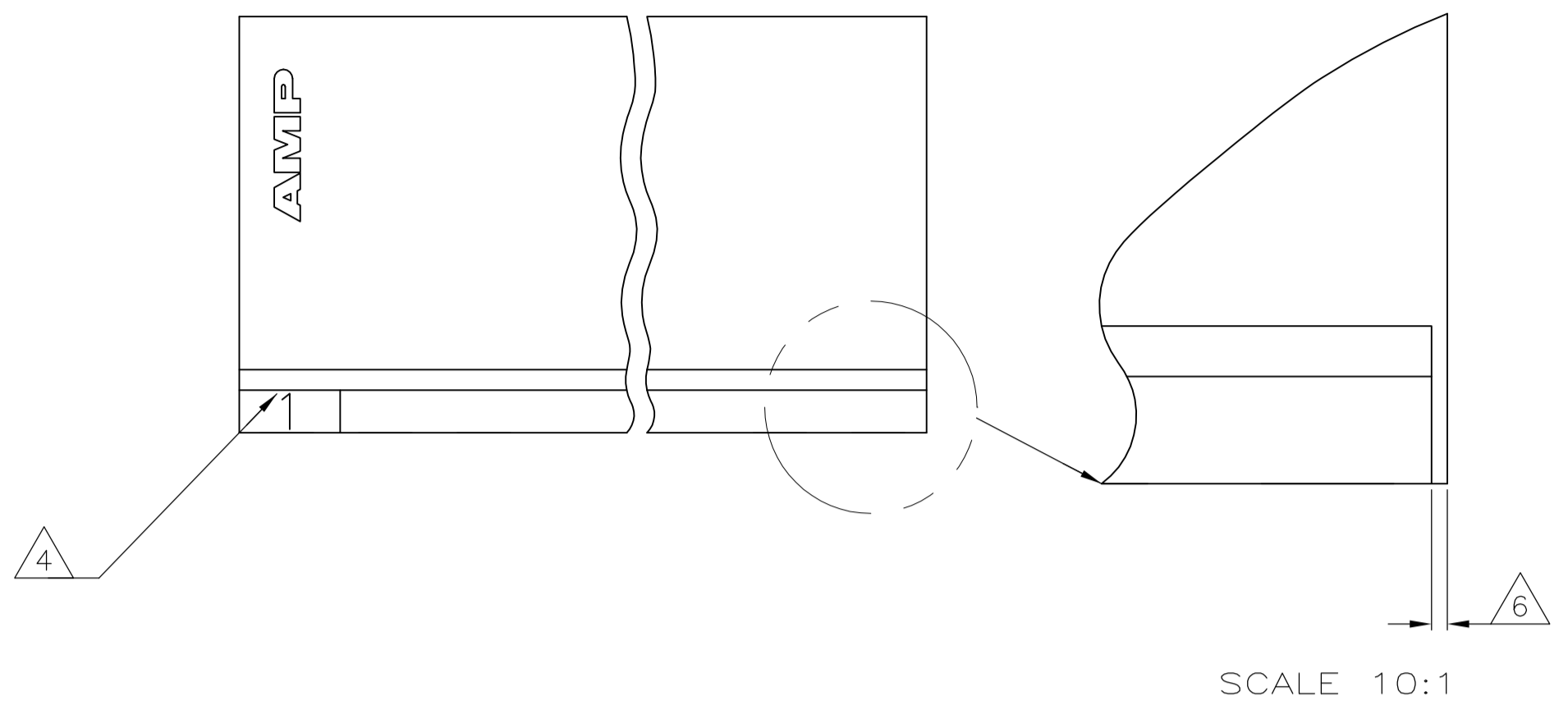
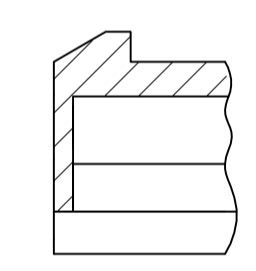
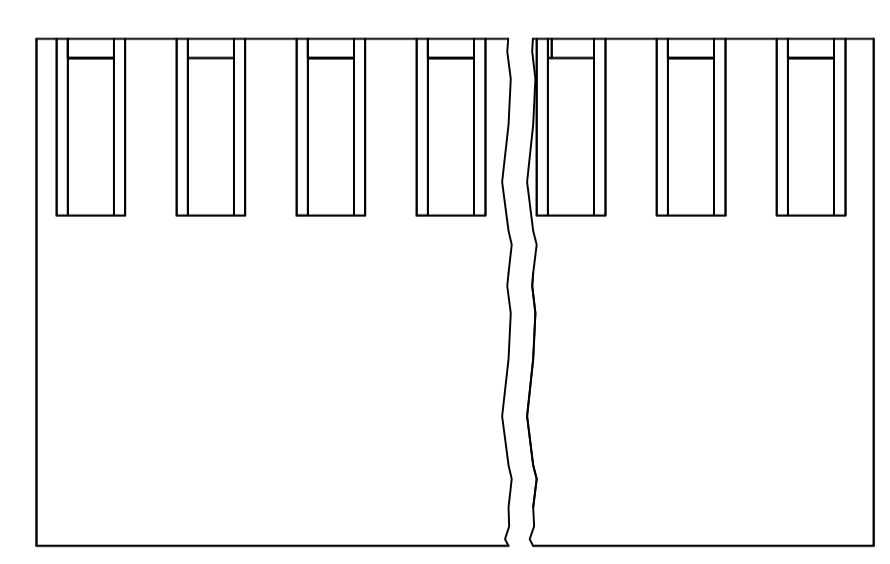
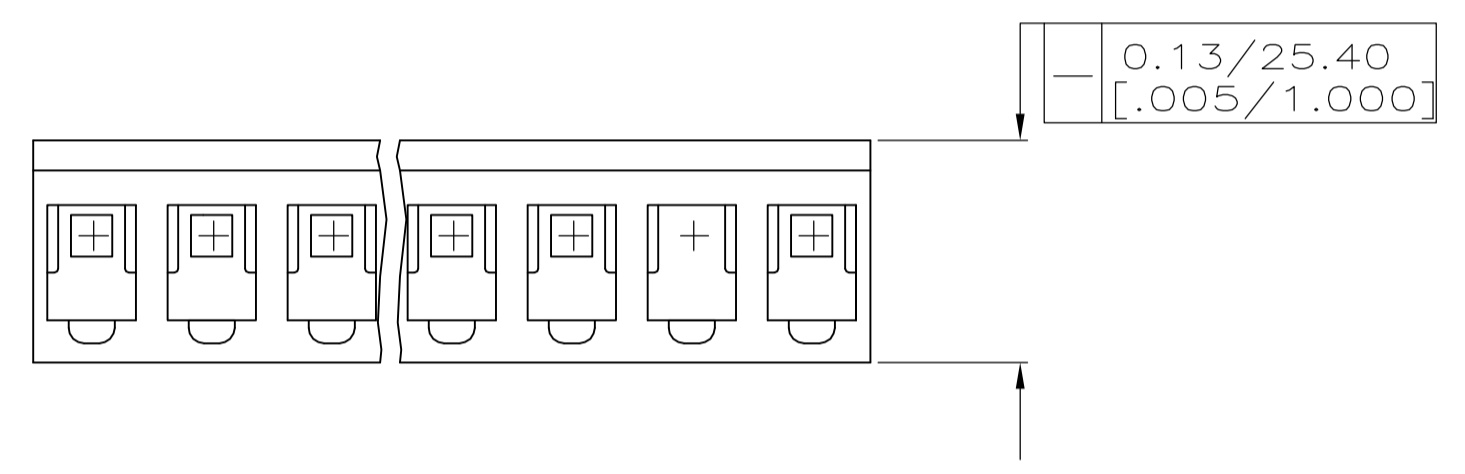
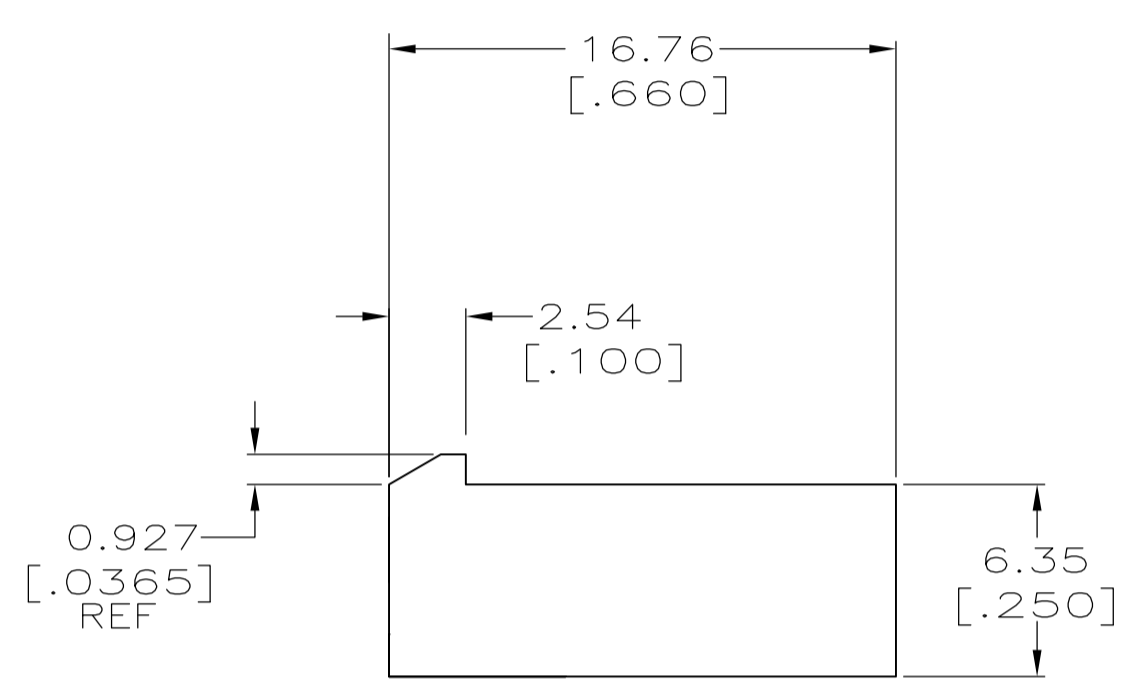
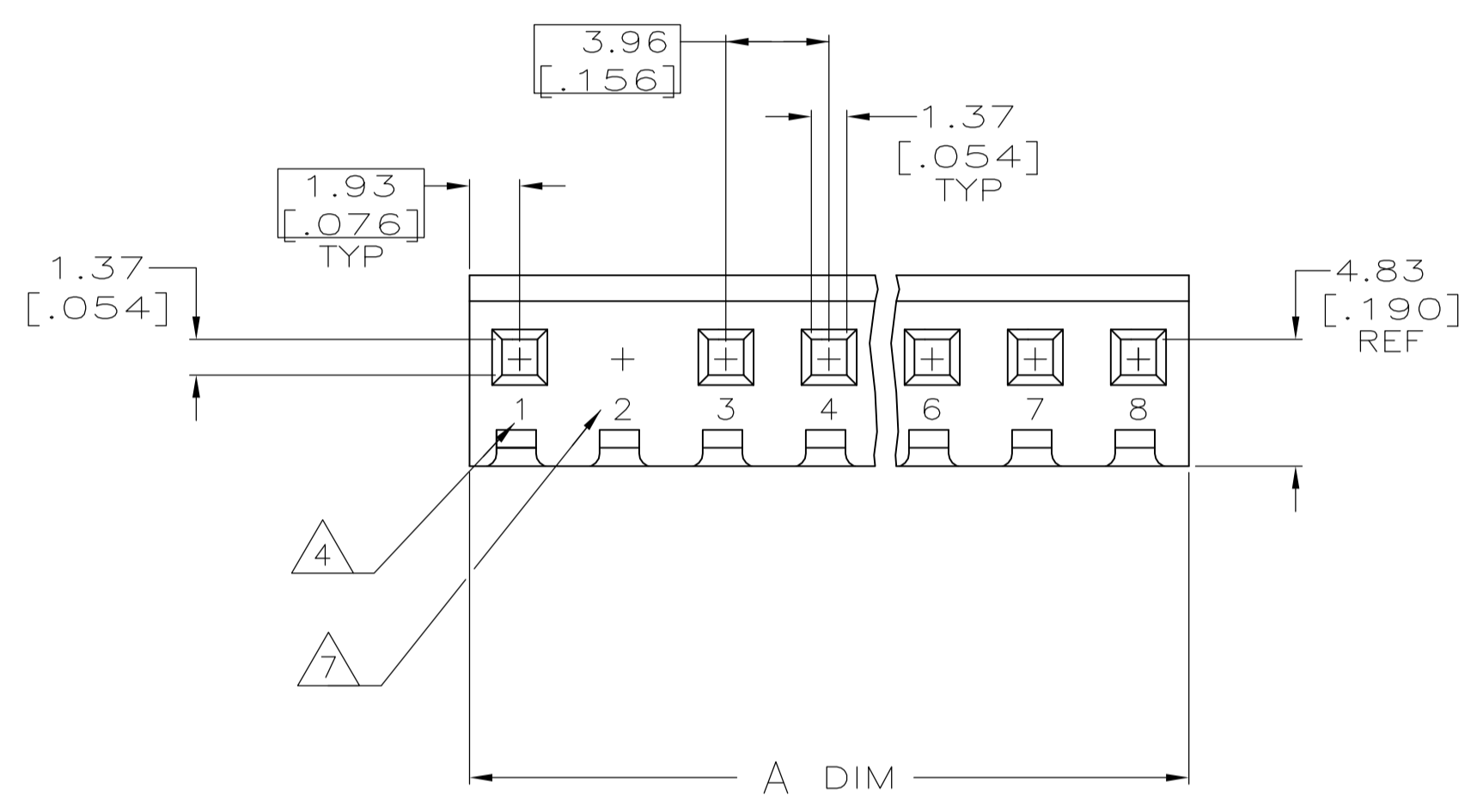


LOC		DIST		REVISIONS			
CM	0	P	LTR	DESCRIPTION	DATE	DWN	APVD
C				REVISED PER ECO-12-007807	06AUG12	KH	SM

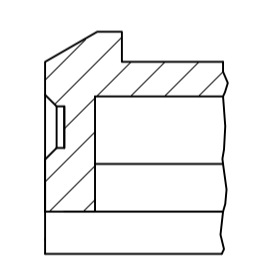
- 1 UNIT ACCEPTS 1.14 [.045] SQUARE OR ROUND POST.
- 2 UNIT ACCEPTS STANDARD SL-156 CONTACTS.
- 3 UNIT ACCEPTS KEYING PLUG 640254-1 AND KEYING PIN 640255-1.
- 4 CIRCUIT I.D. NUMBER(S), TO BE LOCATED SEQUENTIALLY AS SHOWN OR ONLY NO.1 CIRCUIT PLACED ON LOCKING RAMP.
- 5 DIMENSIONS IN BRACKETS ARE IN INCHES.
- 6 OPTIONAL CONSTRUCTION (BOTH CORNERS) UP TO 1.27 [.050].
- 7 CIRCUIT 2 IS MOLDED CLOSED, USING EITHER OPTION A OR OPTION B.



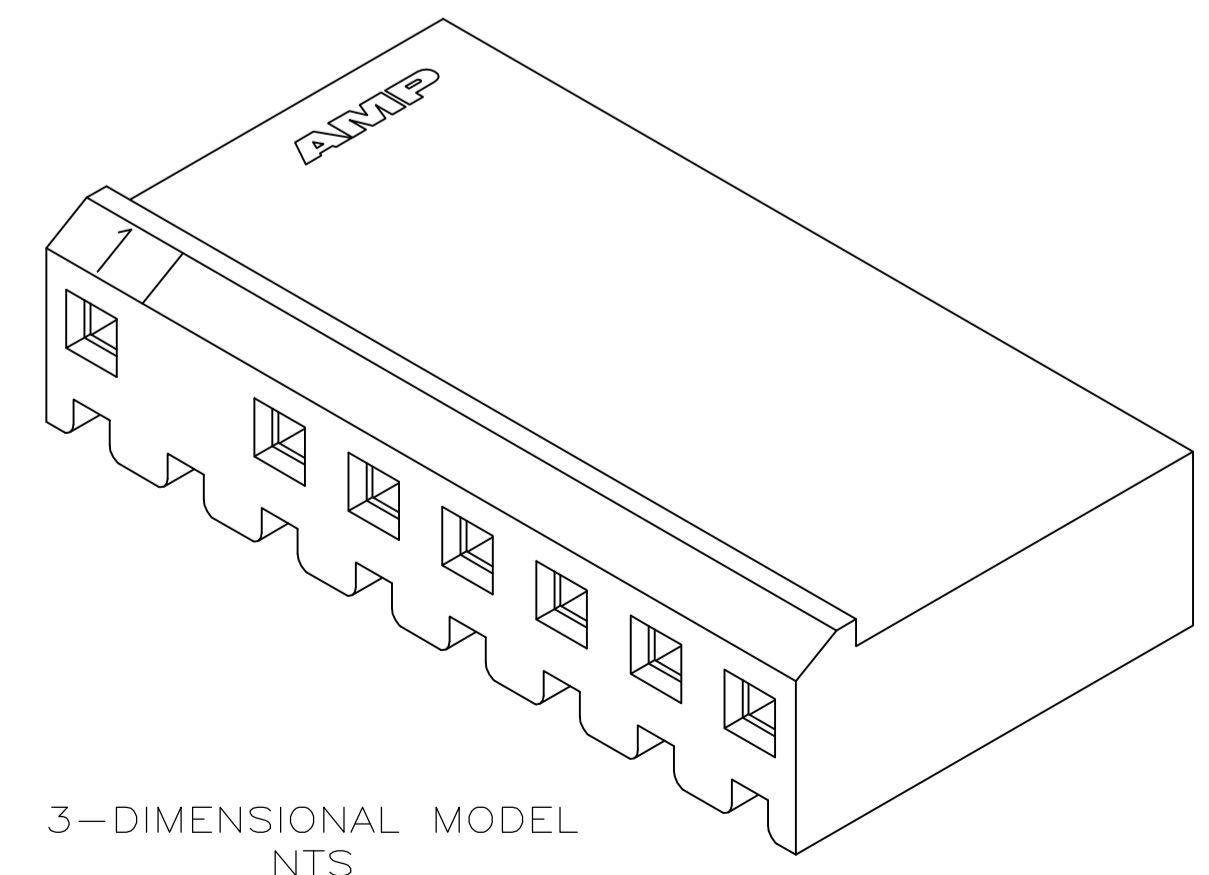
SCALE 10:1



OPTION A



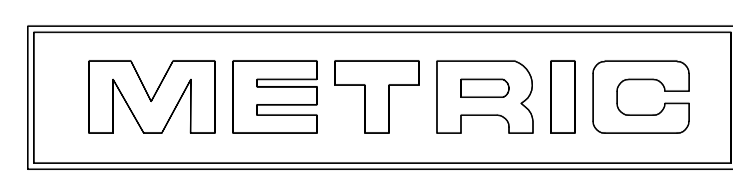
OPTION B



3-DIMENSIONAL MODEL NTS

COLOR	±	NO. OF CIRCUITS	PART NUMBER
ORANGE	11.81 [.465]	3	9-794115-3
NATURAL	75.31 [2.965]	19	1-794115-9
NATURAL	29.85 [1.175]	11	1-794115-1
NATURAL	31.65 [1.246]	8	794115-8
NATURAL	11.81 [.465]	3	794115-3
COLOR	A ±0.25 [.010]		

PRELIMINARY, NOT FOR PRODUCTION
PRELIMINARY, NOT FOR PRODUCTION



THIS DRAWING IS A CONTROLLED DOCUMENT.

DIMENSIONS: mm [INCHES]	TOLERANCES UNLESS OTHERWISE SPECIFIED:	DIN L McEACHIN 17-MAR-2000	APVD J. ELLIS 17-MAR-2000	NAME
0. PLC ± -	1. PLC ± -	CIRK J. ELLIS 17-MAR-2000	PRODUCT SPEC	HOUSING WITH LOCKING RAMP, CIRCUIT NO. 2 CLOSED, SL-156
2. PLC ± 0.13 [.005]	3. PLC ± -	APPLICATION SPEC	SIZE	CAGE CODE DRAWING NO
4. PLC ± -	ANGLES ± 0°30'	WEIGHT	A1 00779C=794115	RESTRICTED TO
MATERIAL NYLON, UL 94V-0	FINISH -	CUSTOMER DRAWING	SCALE 4:1	SHEET 1 OF 1 REV C

STE TE Connectivity

单击下面可查看定价，库存，交付和生命周期等信息

[>>TE Connectivity\(泰科\)](#)