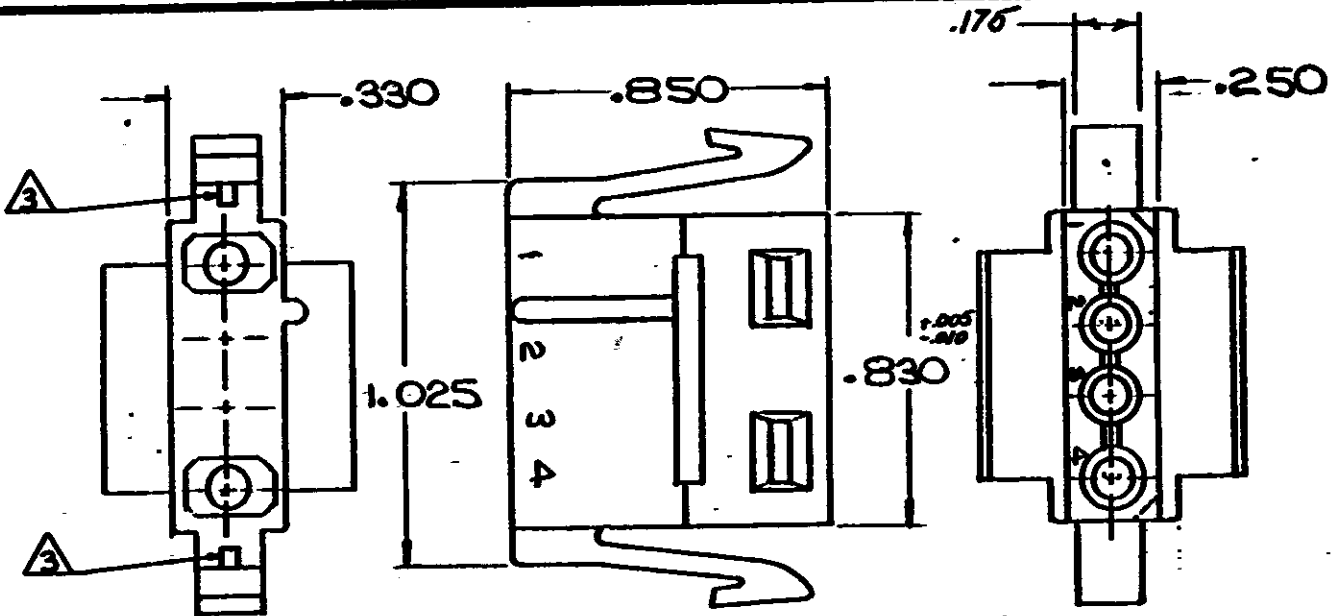


DRAWING MADE IN AMERICAN PROJECTION

SHEET 1 OF 2  
NUMBER 480727

209



- 1. MATES WITH CAP 480728
- 2. TO BE USED WITH MATE-N-LOK DUAL LANCE SOCKETS.
- 3. OPTIONAL CONSTRUCTION

| HOUSING    | MATERIAL | COLOR   |
|------------|----------|---------|
| I-480727-0 | NYLON    | NATURAL |
|            |          |         |
|            |          |         |
|            |          |         |
|            |          |         |
|            |          |         |
|            |          |         |
|            |          |         |
|            |          |         |
|            |          |         |

DIMENSIONS IN INCHES. DO NOT SCALE PRINT.

Copyright © 1973 by AMP Incorporated. All rights reserved. AMP products covered by patents and/or patents pending.

**CUSTOMER COPY REFERENCE ONLY**

© 1973 BY AMP INCORPORATED. ALL RIGHTS RESERVED. AMP PRODUCTS COVERED BY PATENTS AND/OR PATENTS PENDING.

MATERIAL AND FINISH  
**SEE TABLE**



AMP INCORPORATED  
HARRISBURG, PENNSA.

CLASS .084 SOCKET HOUSING

|     |                 |     |    |         |
|-----|-----------------|-----|----|---------|
| F   | REV PER CM 2277 | TB  | RS | 4260    |
| E   | REV PER CM-620  |     |    |         |
| TR  | REVISION RECORD | ECN | NO | DATE    |
| DR  | <i>L.H. ...</i> |     |    | 3-21-73 |
| CHK | <i>311073</i>   |     |    | 3-21-73 |

WIRE — RANGE — INSULATION  
—H— —H—

TYPE  
**PANEL MOUNT**

TOLERANCE EXCEPT AS NOTED  
± .010

SCALE  
1" = 1" NTS

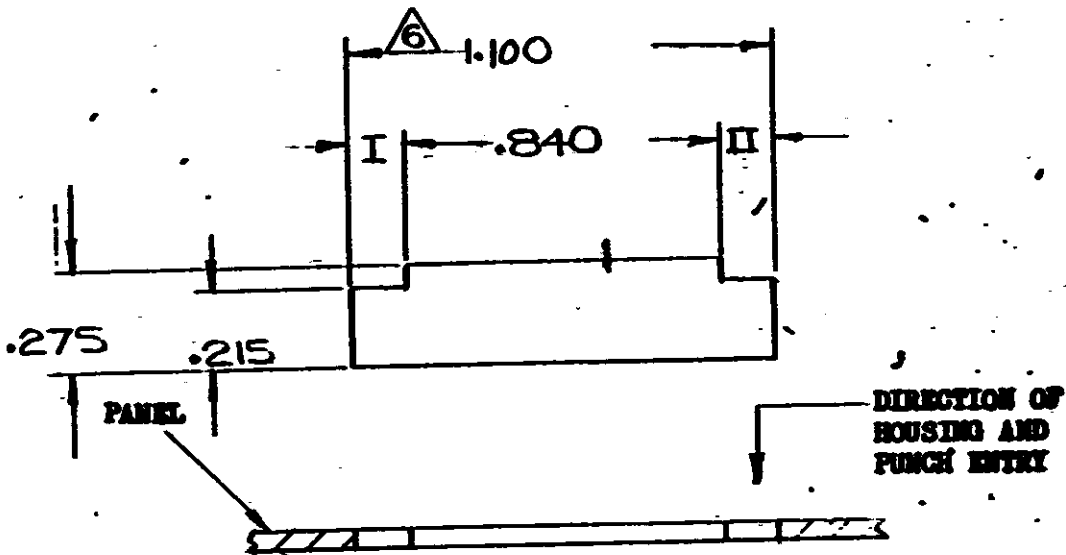
LOC: CM A NO. SHEET 1 OF 2  
**480727**

NAME  
**4 CIRCUIT MATE-N-LOK PLUG DUAL LANCE HOUSING**

REV  
**F**

NUMBER 480727

.015 R MAX  
ALL CORNERS



- NOTE:**
1. Recommended panel thickness .025 - .065.
  2. Both locking legs to be squeezed together and housing to be inserted straight-in, as opposed to a rocking manner of insertion.
  3. The panel must be punched so that the housing enters the panel in the same direction as the punch.
  4. Dimensions I and II to be equal within .005.
  5. Panel must not have any material (paint, porcelain, etc.) applied in the mounting hole area that would decrease retention of the housing in the panel.
- △ 6. If Notes 3 and/or 5 are not complied with, the 1.100 dimension should be reduced to .080 to assure proper housing retention in the panel.

DIMENSIONS IN INCHES. DO NOT SCALE PRINT

PRINT DIST

© 1975 BY AMP INCORPORATED. ALL RIGHTS RESERVED. AMP PRODUCTS COVERED BY PATENTS AND/OR PATENTS PENDING.

**CUSTOMER COPY REFERENCE ONLY**

MATERIAL AND FINISH  
*11*



AMP INCORPORATED  
HARRISBURG, PENNA.

WIRE — RANGE — INSULATION  
*11*

CLASS *11*

TYPE *11*

TOLERANCE EXCEPT AS NOTED  
± .005 ± .010

SCALE  
NTS

LOC  
CM

NO SHEET 2 OF 2  
**480727**

REV  
F

| LTR | REVISION RECORD | ETN | DATE |
|-----|-----------------|-----|------|
|     |                 |     |      |

NAME **RECOMMENDED MOUNTING INFORMATION**  
**4 CIRCUIT MATE-N-LOK PANEL MOUNT FLUG**

单击下面可查看定价，库存，交付和生命周期等信息

[>>TE Connectivity\(泰科\)](#)