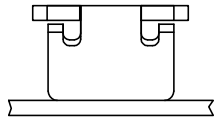
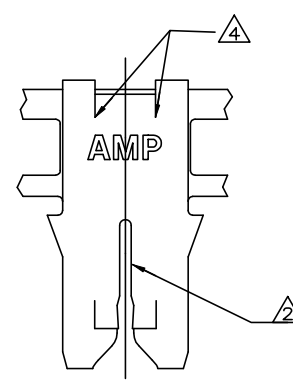
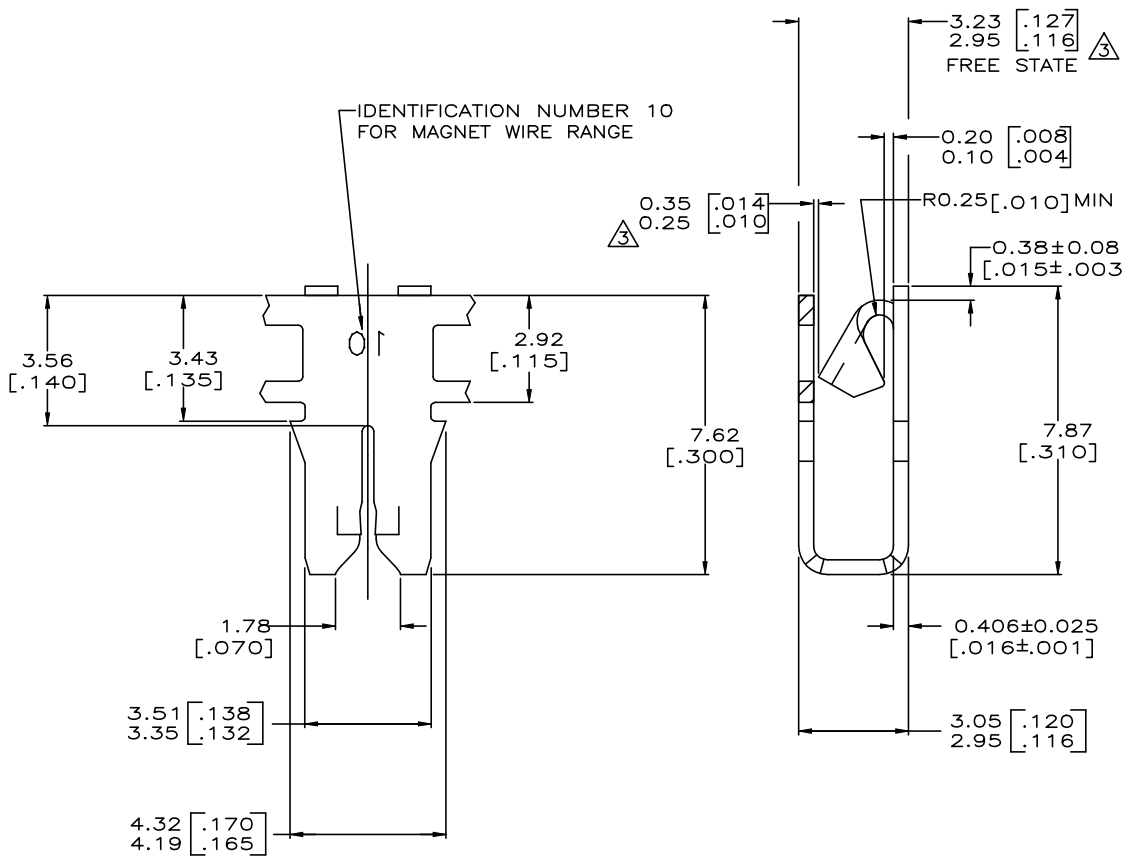


THIS DRAWING IS UNPUBLISHED. RELEASED FOR PUBLICATION  
 © COPYRIGHT - TE Connectivity Ltd. ALL RIGHTS RESERVED.

REVISIONS					
P	LTR	DESCRIPTION	DATE	DWN	APVD
C1		ADDED ALUMINIUM WIRE RANGE	07NOV19	MB	PKS



- 1 CONTINUOUS STRIP ON REELS (NO SPLICES) WITH TERMINALS LOCATED ON 5.59±0.08 [.220 ± .003] CENTERS.
  - △ SLOT ACCEPTS SINGLE OR DOUBLE MAGNET WIRE OF THE SAME SIZE AND TYPE.  
 COPPER RANGE 0.36-0.51mm [#27-#24] AWG  
 ALUMINIUM RANGE 0.51-0.64mm [#24-#22] AWG  
 ALUMINIUM WIRE RANGE APPLIES FOR POST-TIN PLATED PARTS ONLY.  
 GAGING: GO, 0.241 [.0095] NO/GO, 0.318 [.0125].
  - △ FREE STATE AND GAP AT CARRIER SIDE TO BE MAINTAINED PER CHART PROVIDED.
- | FREE STATE            | CARRIER GAP           |
|-----------------------|-----------------------|
| 2.95-3.12 [.116-.123] | 0.25-0.35 [.010-.014] |
| 3.15 [.124]           | 0.28-0.35 [.011-.014] |
| 3.18 [.125]           | 0.30-0.35 [.012-.014] |
| 3.20 [.126]           | 0.33-0.35 [.013-.014] |
| 3.23 [.127]           | 0.35 [.014]           |
- CARRIER SIDE GAP 0.25-0.35 [.010-.014] TO BE CHECKED WHEN FREE STATE IS COMPRESSED TO 3.12 [.123].
- △ NO CRACKS OR TEARS PERMISSIBLE ALONG SHEAR AND BEND LINE



63861-1

THIS DRAWING IS A CONTROLLED DOCUMENT.		DWN MICHAEL S. FEHNER 07/JUN/95		
		CHK JEFF R. RUTH 08/JUN/95		
APVD KURT A. RANDOLPH 08/JUN/95		NAME		
DIMENSIONS: INCHES		PRODUCT SPEC		TERMINAL, POKE-IN, 300 SERIES MAG-MATE™
TOLERANCES UNLESS OTHERWISE SPECIFIED:		APPLICATION SPEC		
0 PLC ± - 1 PLC ± - 2 PLC ± 0.25 [.010] 3 PLC ± - 4 PLC ± - ANGLES ± -		108-2012		
MATERIAL UNS CS11		FINISH TIN PLATING		
		WEIGHT -		SIZE A2 CAGE CODE 00779 DRAWING NO C=63861 RESTRICTED TO -
		CUSTOMER DRAWING		SCALE 10:1 SHEET 1 OF 1 REV C1

单击下面可查看定价，库存，交付和生命周期等信息

[>>TE Connectivity\(泰科\)](#)