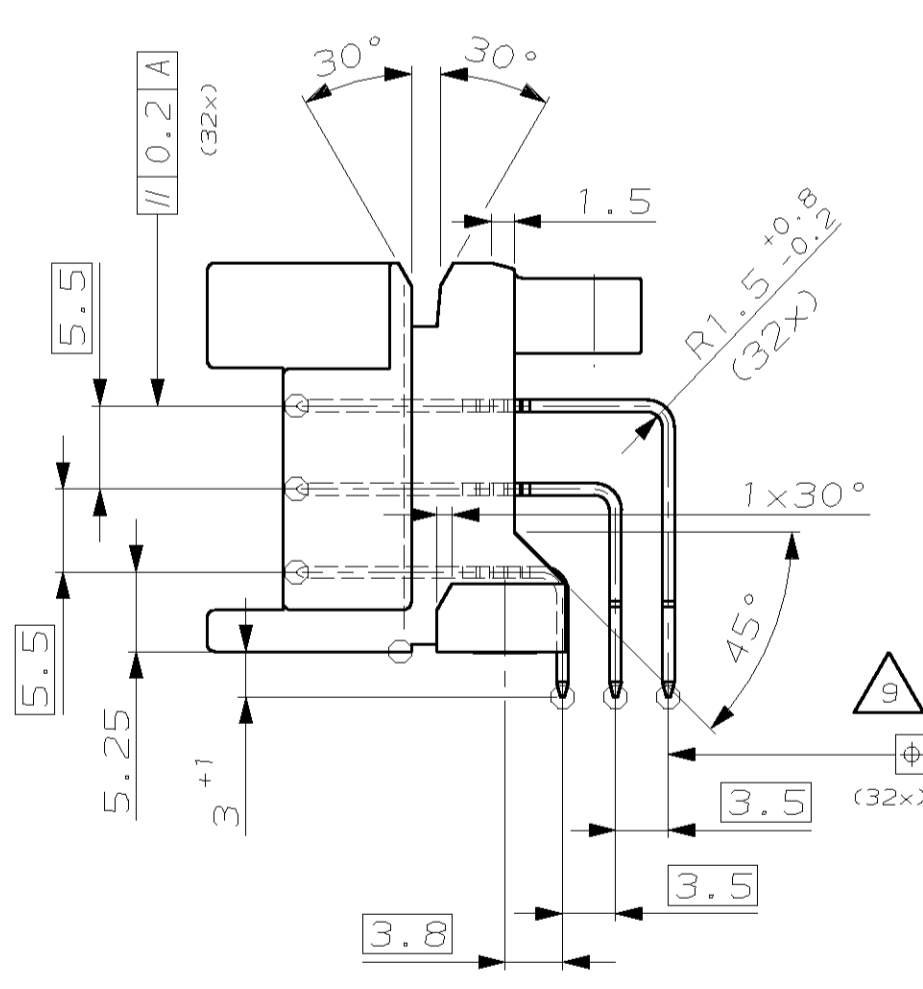
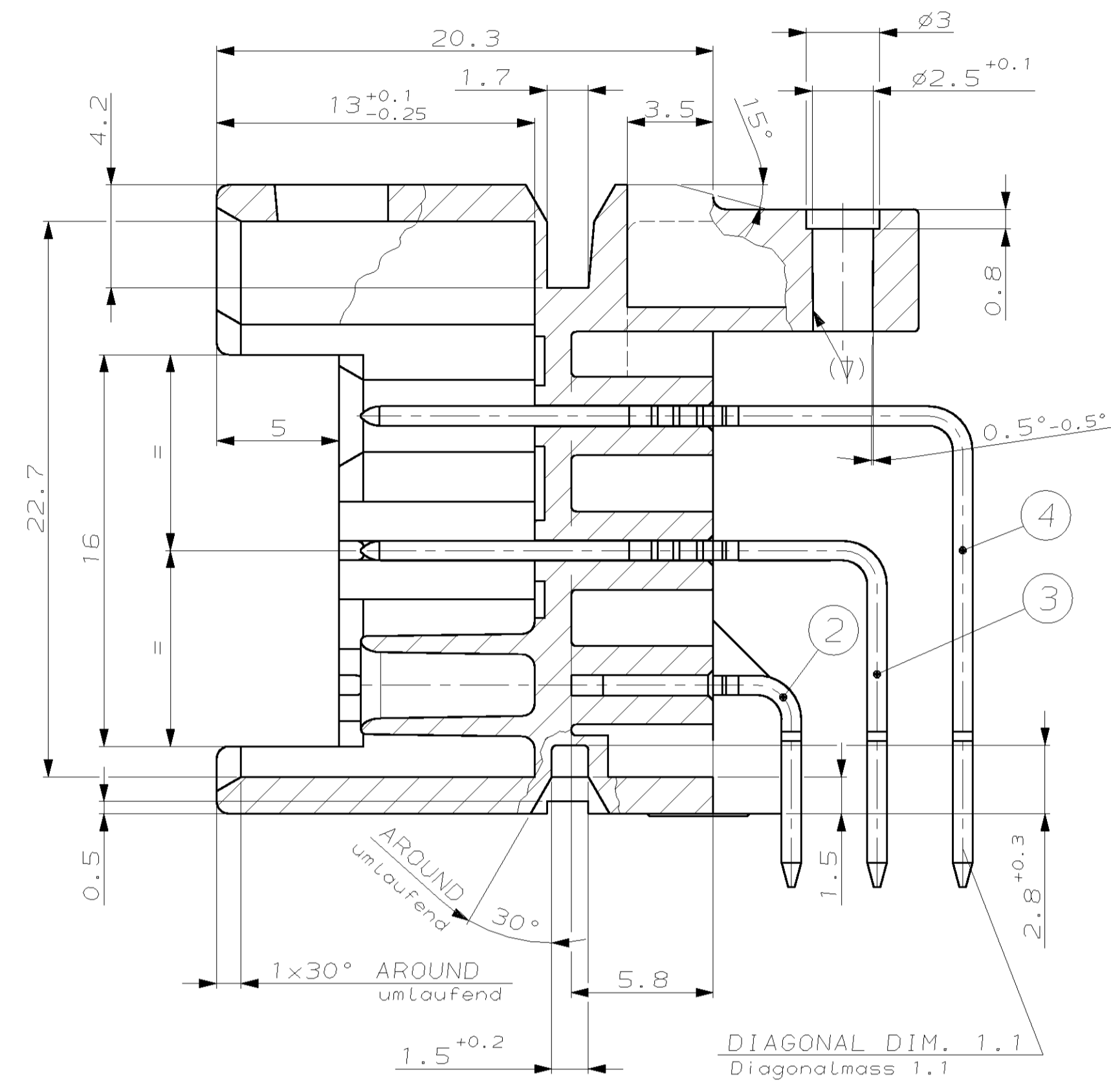
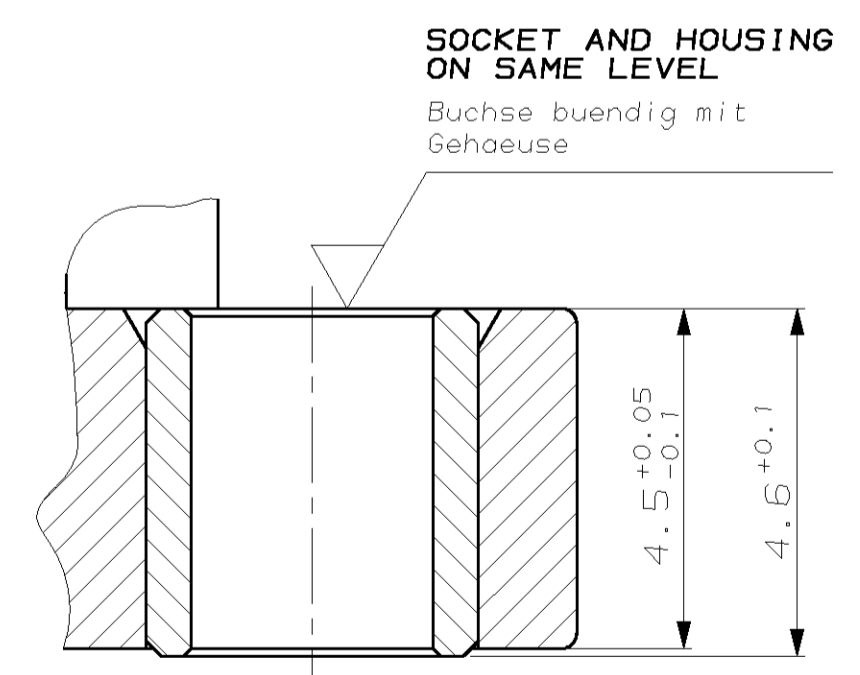


SECTION A-B
 Schnitt A-B
 SCALE 5:1



DETAIL Y
 Einzelheit Y
 SCALE 10:1



SOCKET AND HOUSING ON SAME LEVEL
 Buchse buendig mit Gehause

- NOTES
 Bemerkungen
- AMP-LOGO, SINGLE PART NUMBER OF ITEM 1
 AMP-Logo und Einzelteil-Nr. von Pos. 1
 - tyco AMP ORDER NUMBER SALES PART
 tyco AMP Bestellnummer Verkaufsteil
 - MATERIAL MARKING OF ITEM 1 ACC. TO VDA 260
 Werkstoffkennzeichnung von Pos. 1 nach VDA 260
 - REVISION STATUS OF ITEM 1
 Aenderungsstand von Pos. 1
 - PRODUCTION-DATE OF ITEM 1
 Produktionsdatum von Pos. 1
 - MOULD CAVITY-MARKING
 Nestmarkierung
 - CAVITY-MARKING
 Kammerbezeichnung
 - MAX. WARPAGE TO ... PERMITTED
 Verzug bis max. ... zulassig
 - CHECK THE SOLDER TABS SIDE WITH PLUG
 GAUGE 90-240699 RESP. 90-244755
 (DIMENSIONS ARE NOT INCLUDED
 IN GENERAL TOLERANCES)
 Pruefung der Lotseite mit Steck-Lehre
 90-240699 bzw. 90-244755
 (entsprechende Masse unterliegen
 nicht der ALLgemeintoleranz)
 - PARTS PACKED IN PLASTIC TRAYS IN
 CORRUGATED SHIPPING BOX
 Teile verpackt in Kunststoff-Produkt-
 traeger im Versandkarton
 - MALFUNCTION CAUSED BY LACQUER IS NOT
 COVERED BY TYCO WARRENTY
 Funktionsbeeintraechtigung durch Lackieren liegt
 nicht im Einfluss und Gewaehrleistungsumfang von tyco

MATED WITH JUNIOR POWER TIMER (JPT) HOUSING (+ OPTIONAL SECONDARY LOCKING DEVICE) OR OPTIONAL FOR ** WITH AMP MCP 2.8 HOUSING:

passend zu Junior Power Timer (JPT) Gehause (+ optional einsetzbare zweite Kontaktsicherung) oder optional bei ** zu AMP MCP 2.8 Gehause:

	tyco AMP ORDER NO.	CUSTOMER PART NO.
* JPT HOUSING (2. LOCKING)	1355206-1 -SEE PRODUCT GROUP DRAWING 1355303- (967633-1)	
** JPT HOUSING (2. LOCKING)	1-967624-X -SEE PRODUCT GROUP DRAWING 1355071- (967634-1)	
AMP MCP 2.8 HOUSING	8-968974-1 -SEE PRODUCT GROUP DRAWING 1355073-	

CUSTOMER PART NO.	tyco AMP PART NO.	REV.	PCS.	MATERIAL	SURFACE COLOR	DESCRIPTION	ITEM NO.
967505-3	A			2 CuZn39Pb3 PLAIN/blank		SOCKET / Buchse	5
				11 CuSn TINNED		TAB (43.4 mm)	4
				11 CuSn TINNED		TAB (34.4 mm)	3
				10 CuSn TINNED		TAB (25.4 mm)	2
				1 PBT-GF20 BLACK/Schwarz		TAB HEADER HOUSING, 32POS./Messerleiste, Gehause, 32polig	1

THIS DRAWING IS A CONTROLLED DOCUMENT FOR THE INDUSTRY. IT IS SUBJECT TO CHANGE AND THE CONTROLLING ENGINEERING DEPARTMENT SHALL BE CONTACTED FOR THE LATEST REVISION. ANY CHANGES TO THIS DRAWING MUST BE APPROVED BY THE CONTROLLING ENGINEERING DEPARTMENT AND MUST BE INCORPORATED INTO ALL DRAWINGS AND PARTS LIST. FOR FURTHER INFORMATION, CONTACT THE CONTROLLING ENGINEERING DEPARTMENT.

APPROVED: P. Huebner 77-JUL-06
 DRAWN: P. Huebner 77-JUL-06
 CHECKED: Ch. Granow 77-JUL-06
 DATE: 18-JUL-06

tyco Tyco Electronics AMP GmbH
 D - 64625 Bensheim

Ch. Eberwein
 TAB HEADER ASS'Y, 2.8MM, 32POS.
 Messerleiste, 2.8mm, 32pol.

SIZE: A1
 CAGE CODE: 00779
 DRAWING NO.: 967505
 DATE: 18-JUL-06

RESTRICTED TO OUR KIER

CUSTOMER DRAWING /KUNDENZEICHNUNG

单击下面可查看定价，库存，交付和生命周期等信息

[>>TE Connectivity\(泰科\)](#)