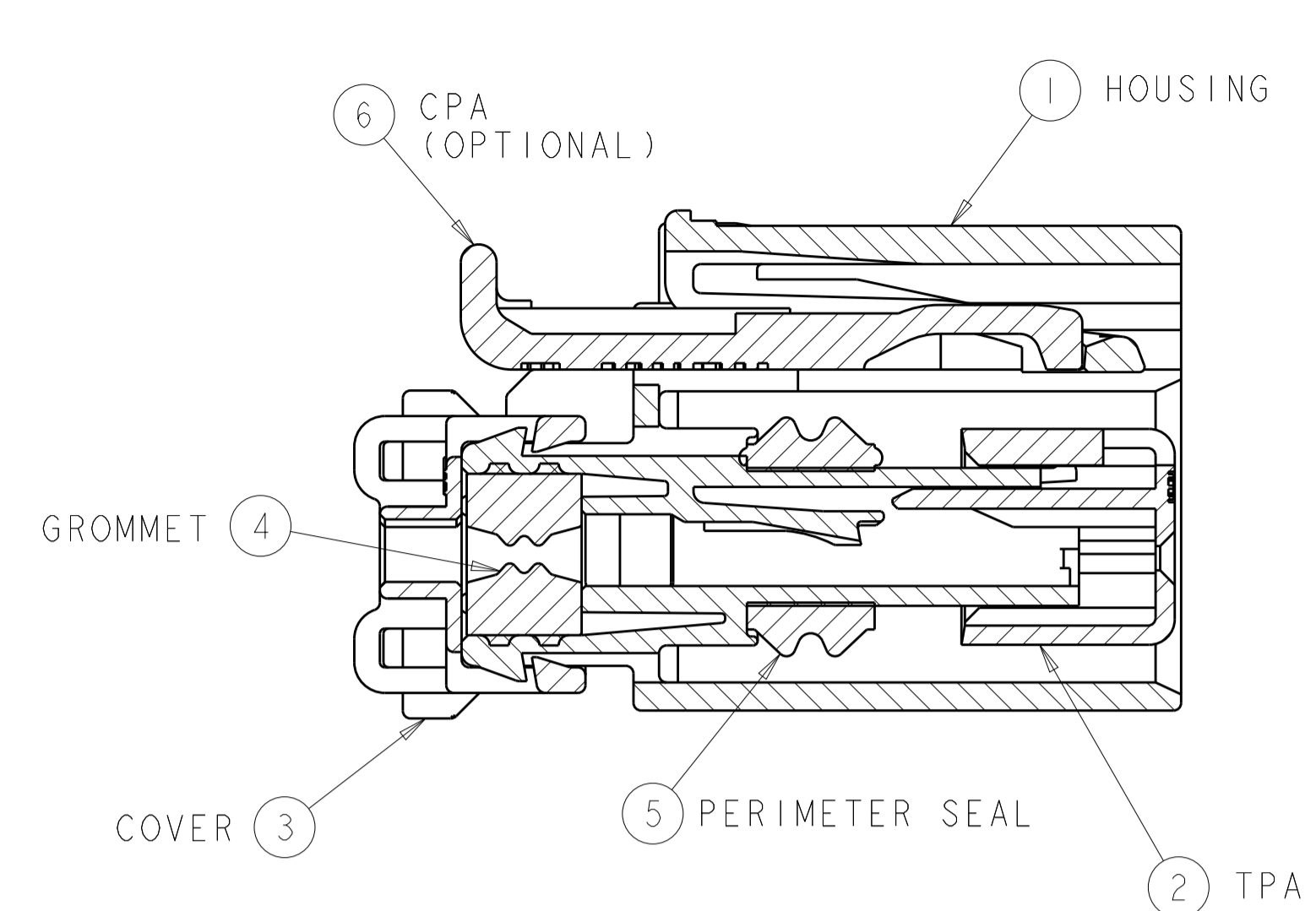
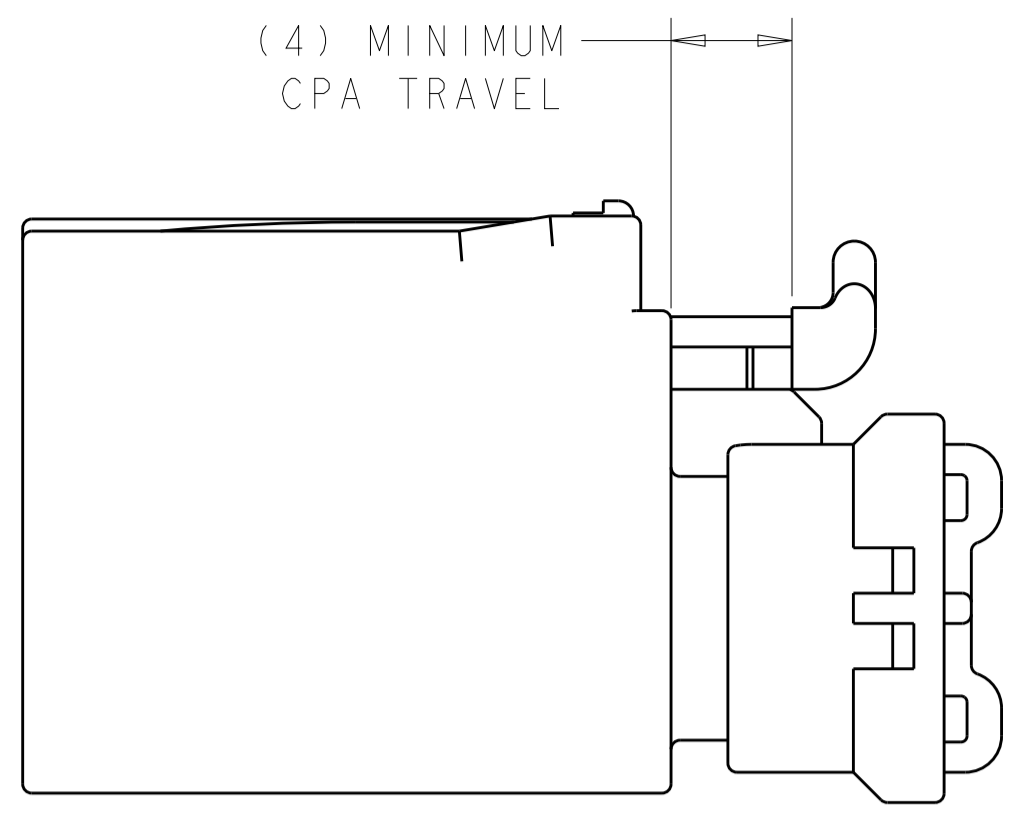
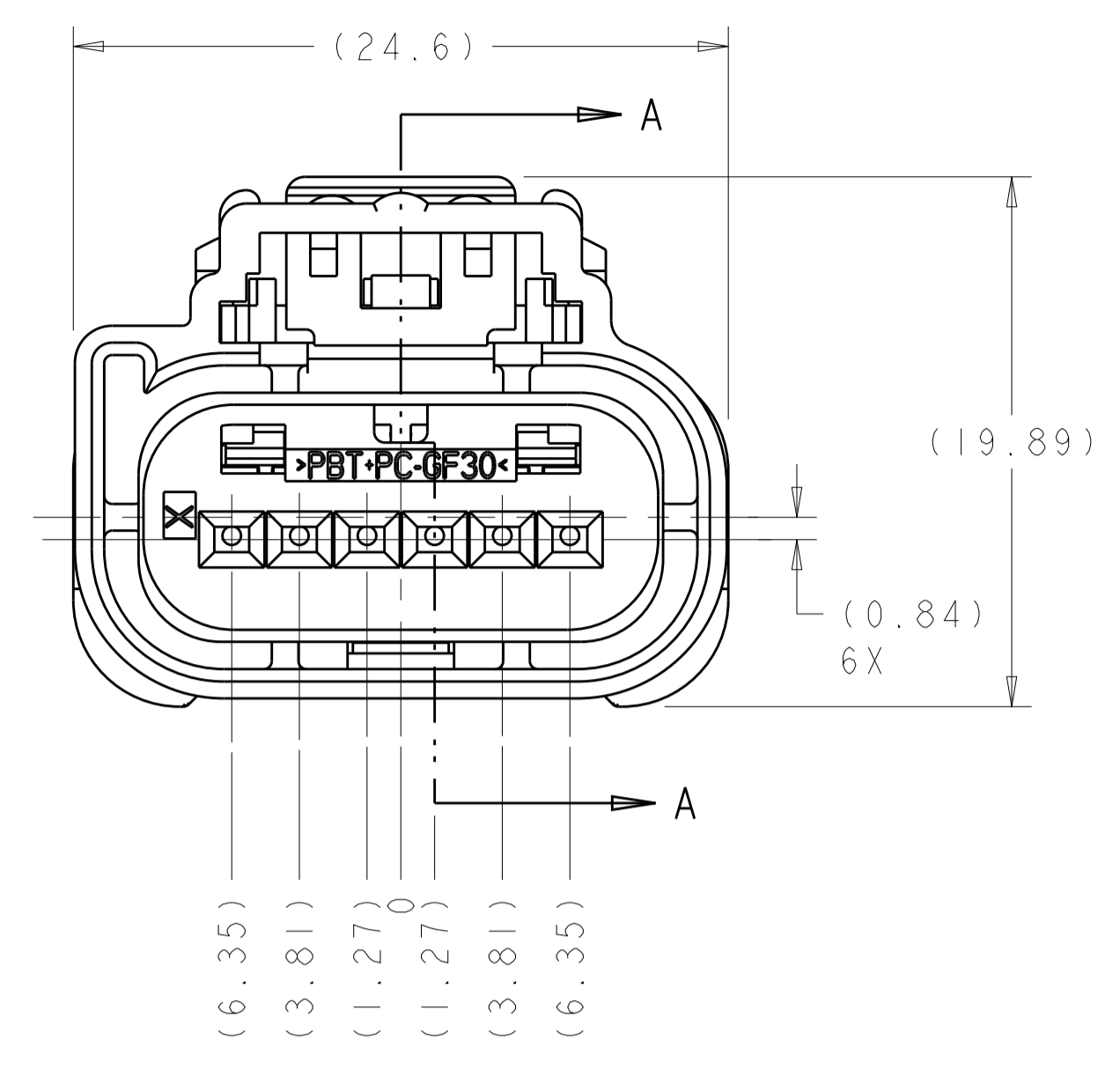


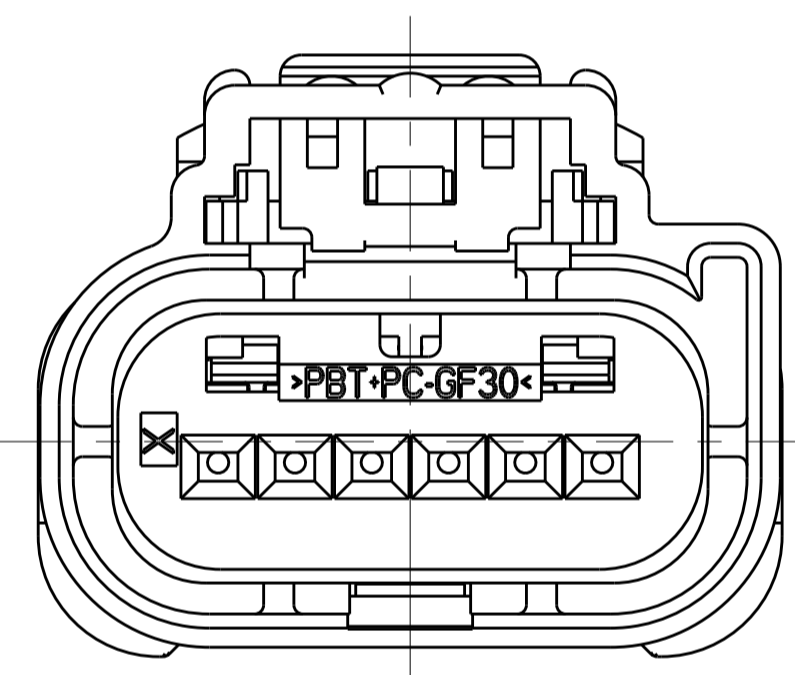
LOC		DIST		REVISIONS			
P	LTM	DESCRIPTION	DATE	OWN	APVD		
F3		REVISED PER ECO-10-012381	14JUN2010	DLD	DLD		
F4		REVISED PER ECO-10-017819	30AUG2010	DLD	DJZ		
F5		REVISED PER ECO-13-005463	05APR2013	DLD	DCM		



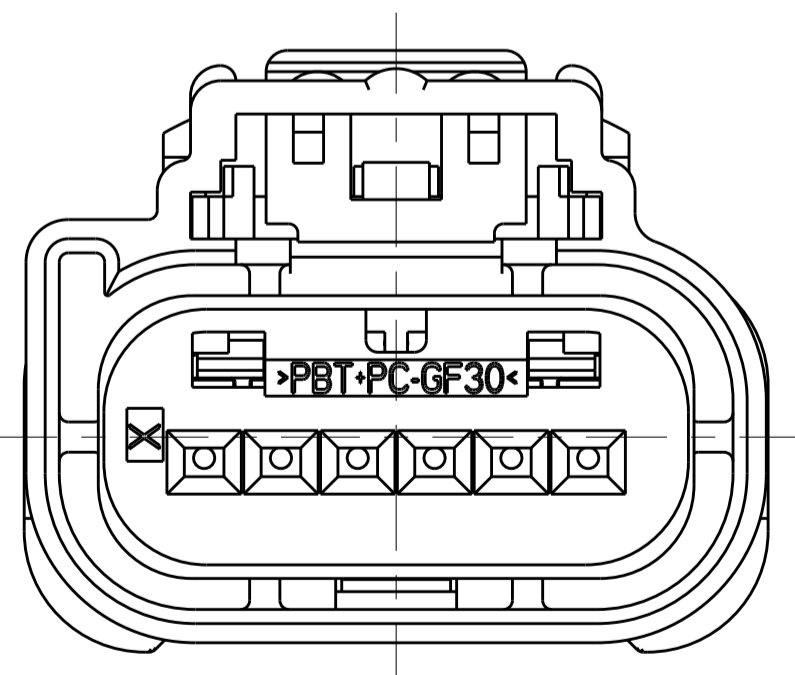
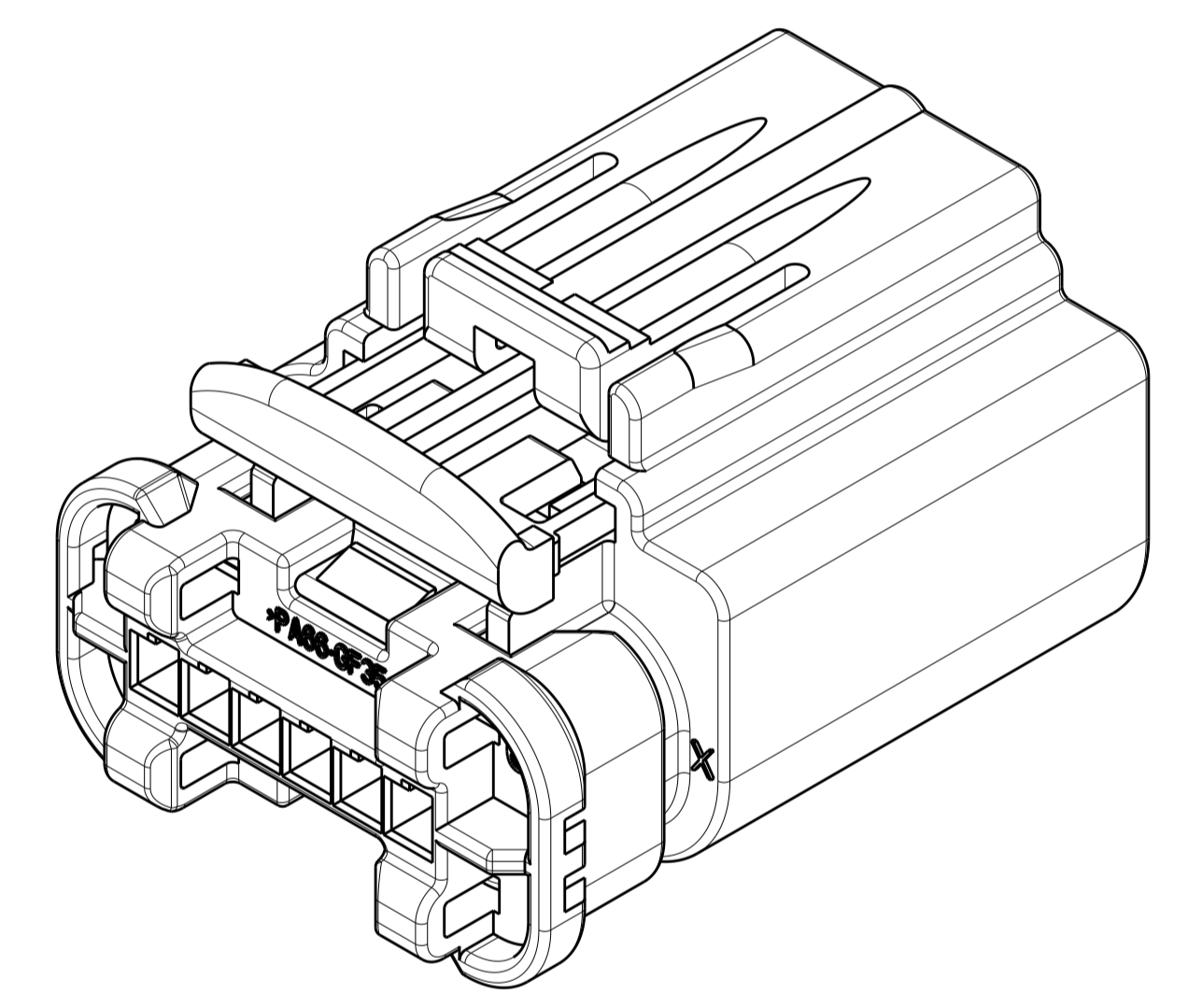
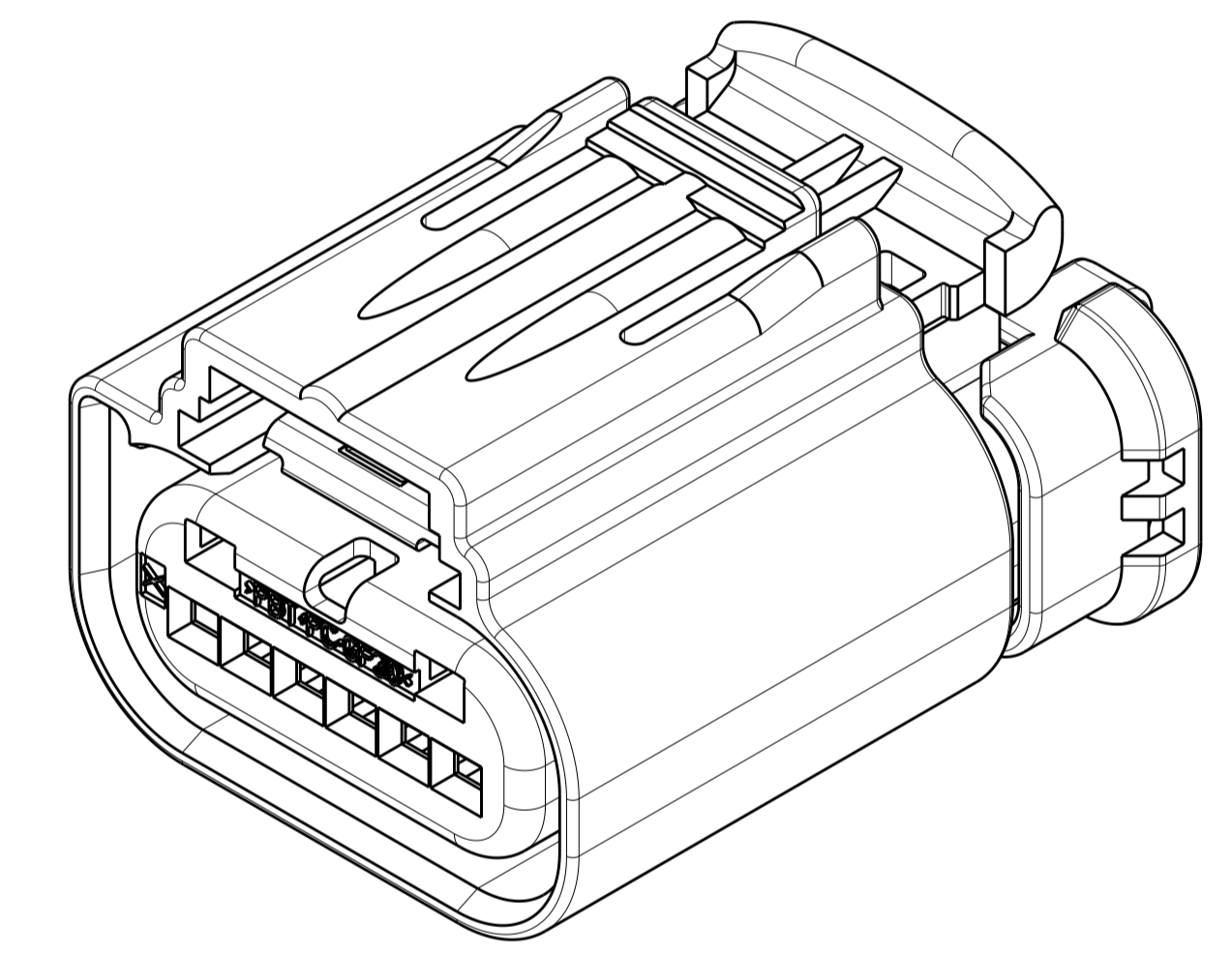
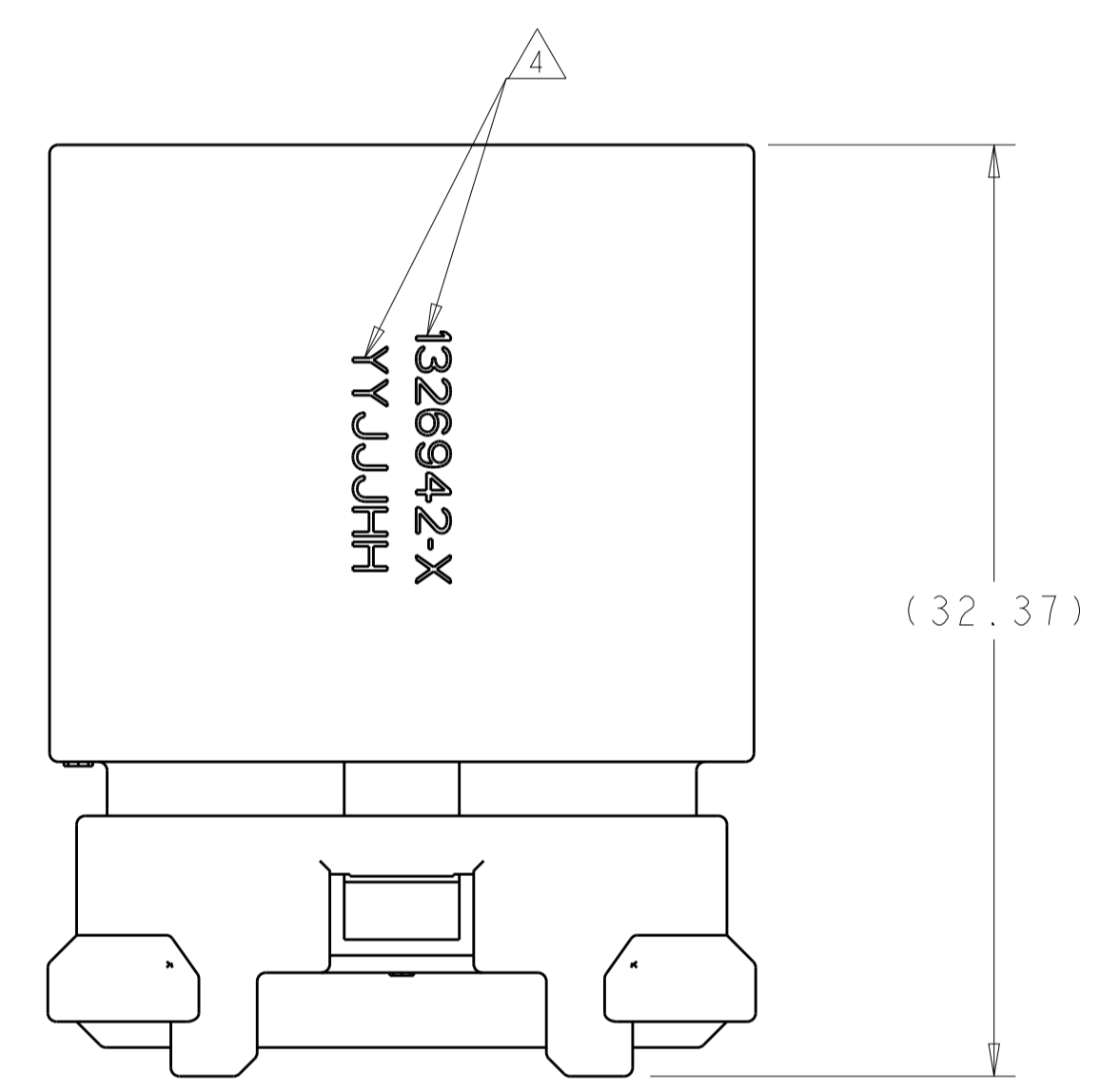
SECTION A-A  
 SHOWN WITH TPA AND CPA  
 IN THEIR PRE-LOADED POSITION  
 (DELIVERY CONDITION)



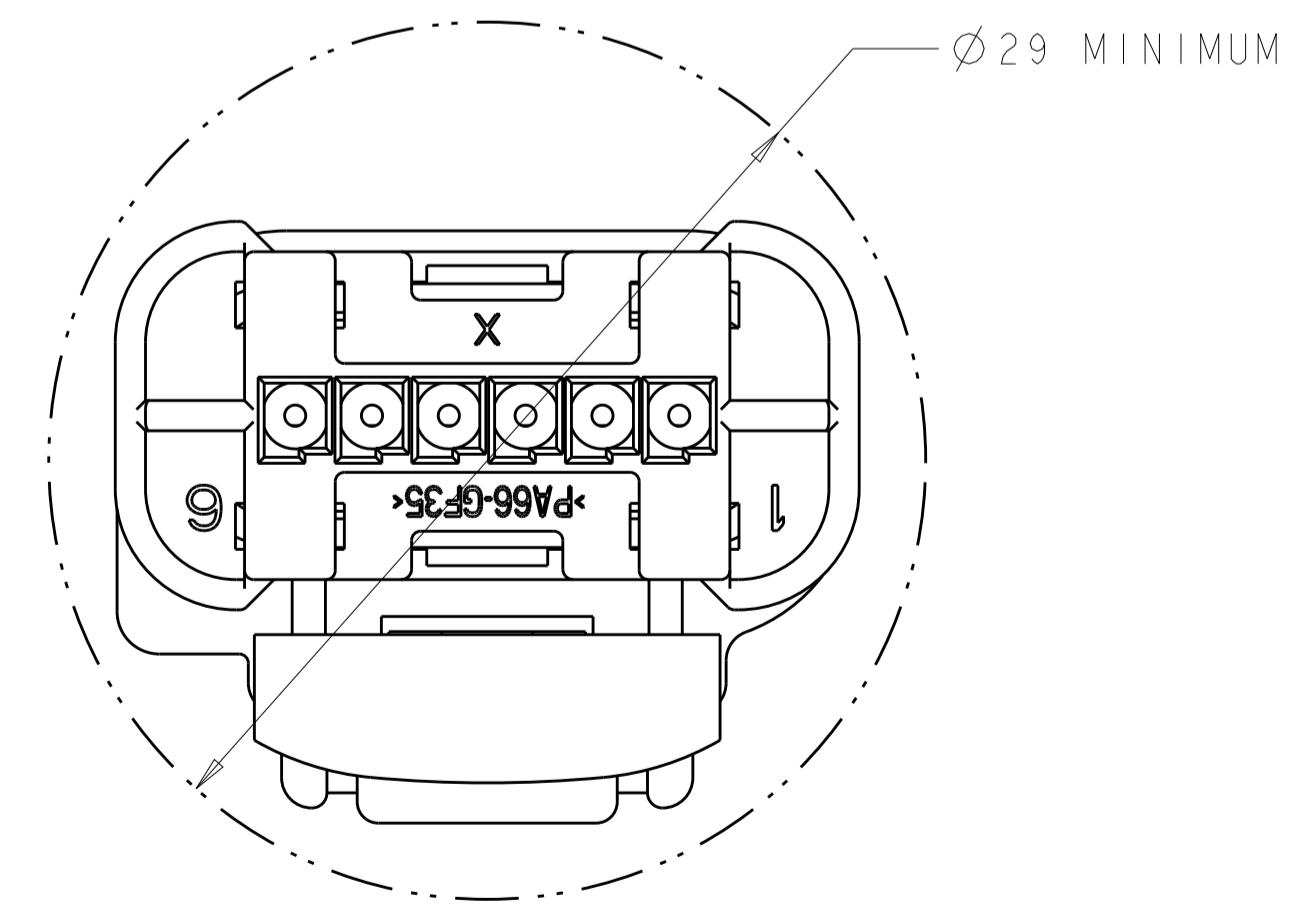
- APPLICABLE TERMINAL PART NUMBERS (SOLD SEPARATELY):  
 FOR TIN APPLICATIONS: 1393367 AND 1393366.  
 FOR GOLD APPLICATIONS: 1393365 AND 1393364.  
 FOR TERMINATION AND REELING OPTIONS  
 SEE DRAWINGS 1393367, 1393366, 1393365, AND 1393364.
- COMPATIBLE WIRE SIZES FOR MAT SEAL DESIGN 1.19 TO 2.06 O.D.  
 (22-18 AWG, 0.35-0.75 mm<sup>2</sup>)
- TPA IS SHIPPED IN PRE-LOADED POSITION. SOME TPA'S MAY BECOME FULLY SEATED DURING SHIPPING. USE TE CONNECTIVITY (TE) INSTRUCTION SHEET 408-10128 TO REPOSITION TPA TO IT'S PRE-LOADED POSITION.
- TE ASSEMBLY PART NUMBER AND TRACEABILITY CODE (YY = TWO DIGIT YEAR, JJJ = JULIAN DAY, HH = TWO DIGIT MILITARY HOUR) ARE PRINTED IN THIS LOCATION.
- APPLICABLE HEADER INTERFACE DRAWING 1438199 IS AVAILABLE UPON REQUEST. A COPY OF THIS DRAWING CAN BE OBTAINED FROM THE TE PRODUCT MANAGER, VIA YOUR TE SALES REPRESENTATIVE OR CUSTOMER SERVICE.
- WIRE DRESS COVER PART NO. 1326941-1 MATES WITH THIS CONNECTOR ASSEMBLY.
- ASSEMBLIES ARE BULK PACKAGED.
- OPTIONAL CPA IS SHIPPED IN IT'S PRE-LOADED POSITION.



KEYING OPTION "A"



KEYING OPTION "B"



MINIMUM FEED THRU CONDITION  
 WITH 1mm CLEARANCE ALL AROUND

KEYING OPTION "B" SHOWN  
 SEE NOTE 5 FOR APPLICABLE HEADER  
 INTERFACE INFORMATION



DIMENSIONS: mm 		TOLERANCES UNLESS OTHERWISE SPECIFIED: 0 PLC ±0.3 1 PLC ±0.10 2 PLC ±0.10 3 PLC ±0.10 4 PLC ±0.10 ANGLES ±0.5° FINISH -		DWN: V/C SLACK 05NOV2004 CHK: HOY BECK 05NOV2004 APVD: HOY BECK 05NOV2004 PRODUCT SPEC APPLICATION SPEC WEIGHT - Customer Drawing		Tyco Electronics Harrisburg, PA 17105-3608 NAME: I X 6 SEALED, CONNECTOR FOR ANGLED WIRE DRESS COVER SIZE: A100779 SCALE: 4:1 SHEET 1 OF 2 REV: F5	
-----------------------	--	--	--	---	--	--	--

THIS DRAWING IS UNPUBLISHED. RELEASED FOR PUBLICATION  
 © COPYRIGHT 20 BY TYCO ELECTRONICS CORPORATION. ALL RIGHTS RESERVED.

LOC		DIST		REVISIONS			
AA	00	P	LTN	DESCRIPTION	DATE	DMN	APVD
		-		SEE SHEET 1		-	-

6	5	4	3	2	1	FORD PART NUMBER	TYCO ELECTRONICS ASSEMBLY PART NUMBER
						7U5T-14A464-EA-000	1326942-2
CAVITIES WITH A NUMBER INDICATES CLOSED TERMINAL HOLE LOCATION							
BLANK CAVITIES INDICATES OPEN TERMINAL HOLE LOCATION							
KEY B, NO CPA							

6	5	4	3	2	1	FORD PART NUMBER	TYCO ELECTRONICS ASSEMBLY PART NUMBER
							1326942-9
			3	2	1		1326942-8
		4				AU5T-14A464-BA-001	1326942-5
						AU5T-14A464-BA-000	1326942-4
CAVITIES WITH A NUMBER INDICATES CLOSED TERMINAL HOLE LOCATION							
BLANK CAVITIES INDICATES OPEN TERMINAL HOLE LOCATION							
KEY A, WITH CPA							

6	5	4	3	2	1	FORD PART NUMBER	TYCO ELECTRONICS ASSEMBLY PART NUMBER
						7LIT-14A464-CB-003	1326942-7
			4			7LIT-14A464-CB-002	1326942-6
						7LIT-14A464-CB-001	1326942-3
						7LIT-14A464-CB-000	1326942-1
CAVITIES WITH A NUMBER INDICATES CLOSED TERMINAL HOLE LOCATION							
BLANK CAVITIES INDICATES OPEN TERMINAL HOLE LOCATION							
KEY B, WITH CPA							

<small>THIS DRAWING IS UNPUBLISHED. RELEASED FOR PUBLICATION. IT IS THE POLICY OF TYCO ELECTRONICS CORPORATION TO CONTROL AND RESTRICT THE DISTRIBUTION OF THIS DRAWING TO THE EXTENT NECESSARY TO PROTECT THE COMPANY'S INTERESTS. CONTACT YOUR LOCAL SALES OFFICE FOR THE LATEST REVISION.</small>		DWN: A. HOLT 28MAR2007 CHK: D. STRAUSSER 28MAR2007 APVD: D. STRAUSSER 28MAR2007	<b>Tyco Electronics</b> Tyco Electronics Harrisburg, PA 17105-3608
DIMENSIONS: mm	TOLERANCES UNLESS OTHERWISE SPECIFIED: 0 PLC ± 1 PLC ±0.3 2 PLC ±0.10 3 PLC ± 4 PLC ± ANGLES ±°	NAME: 1 X 6 SEALED CONNECTOR FOR ANGLED WIRE DRESS COVER PRODUCT SPEC: APPLICATION SPEC: FINISH:	SIZE: A   00779   C=1326942 RESTRICTED TO:
MATERIAL: SEE TABLE	WEIGHT:	SCALE: 4:1 SHEET: 2 OF 2 REV: F5	Customer Drawing

单击下面可查看定价，库存，交付和生命周期等信息

[>>TE Connectivity\(泰科\)](#)