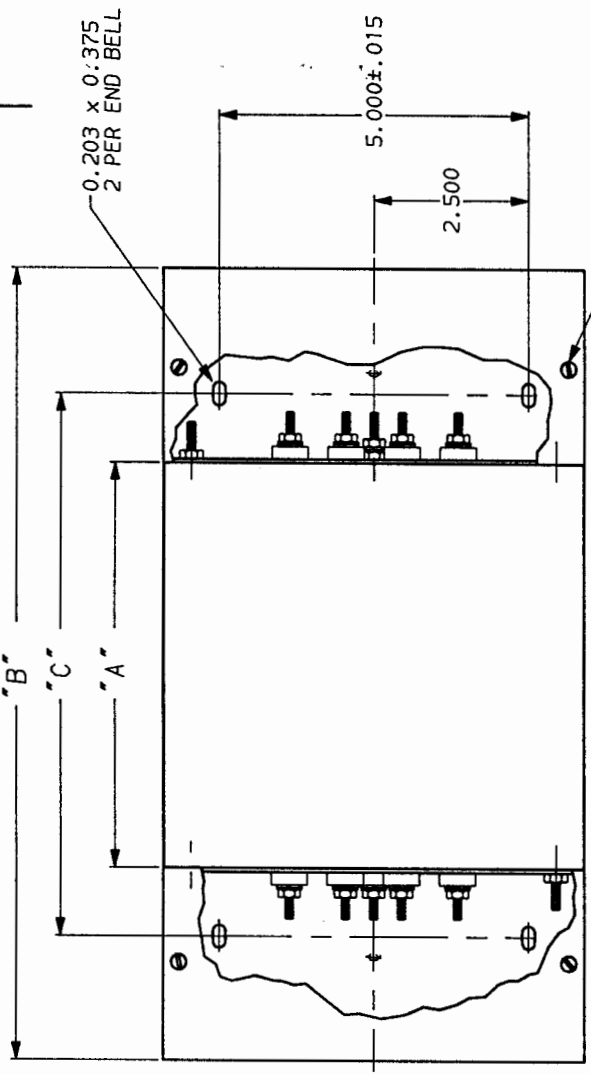
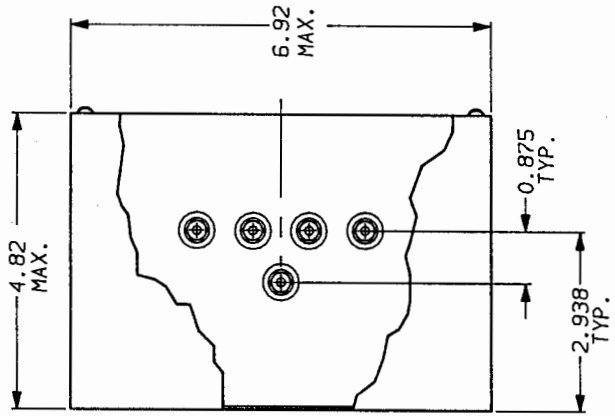
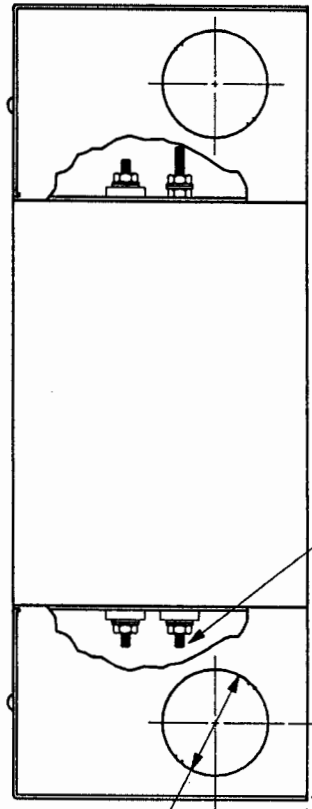


PART NO.	DIM. "A" MAX.	DIM. "B" MAX.	DIM. "C" ±.030
45/60AYP6C	7.16	13.610	9.656
45/60AYT6C	11.58	18.030	14.076

SHEET 1 OF 1		
APPROVED	DATE	REV
<i>[Signature]</i>	11-30-87	2



SCREW, TIE DOWN COVER  
(4) PER UNIT



1.718 DIA.  
KNOCKOUT SLUG  
2 PER END BELL

END BELL KIT AA 407

LIBERTYVILLE, IL 60048

45AYP6C & 45AYT6C/60AYP6C & 60AYT6C WITH END BELLS

SCALE	DWG. NO.	DATE	REV.
.5x	LJD	9-13-88	45AYT6C-45AYP6C 02
	ORIGINATOR		
	HKP		

This document is proprietary to CORCOM INC. and is not to be reproduced nor used for manufacturing purposes except on CORCOM's order or prior written consent.

NOTE: UNLESS OTHERWISE SPECIFIED, TOLERANCE TO BE ±.030

单击下面可查看定价，库存，交付和生命周期等信息

[>>TE Connectivity\(泰科\)](#)