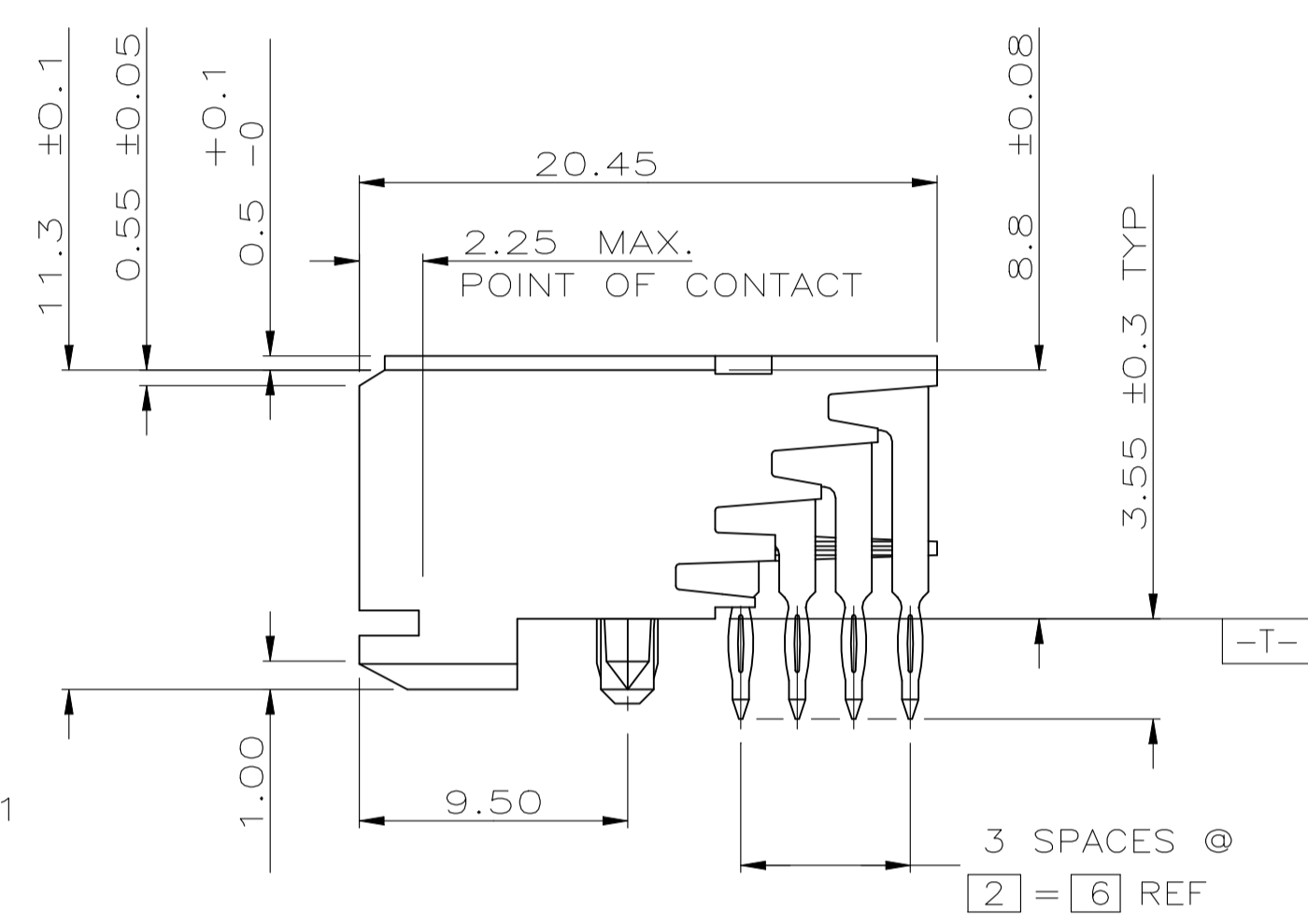
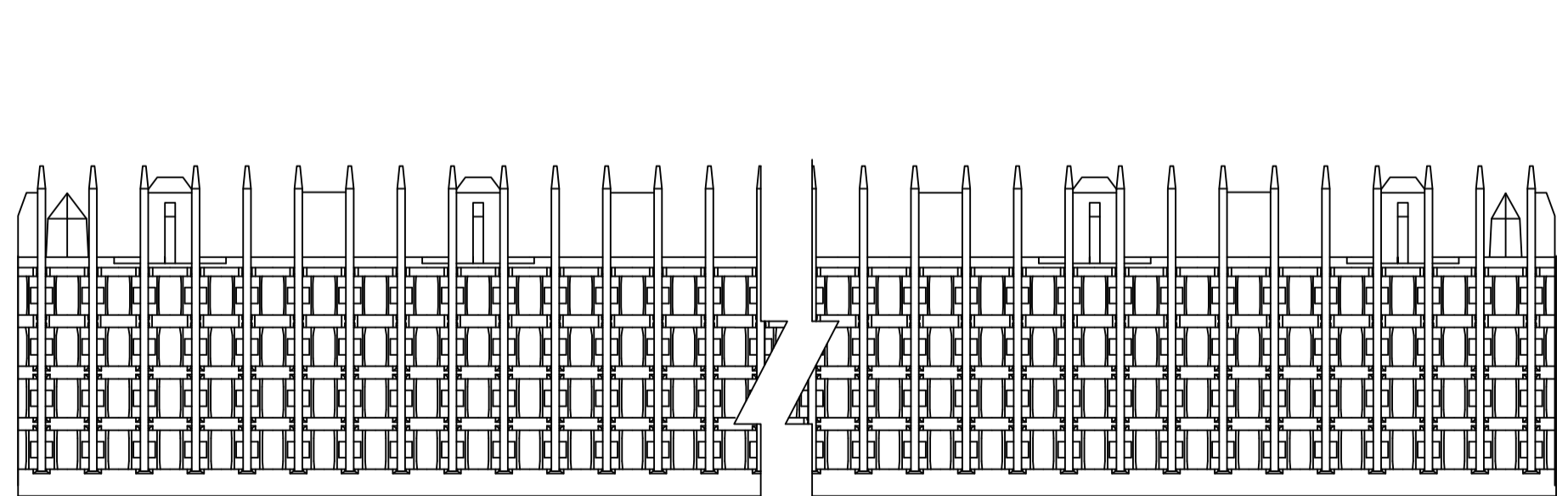
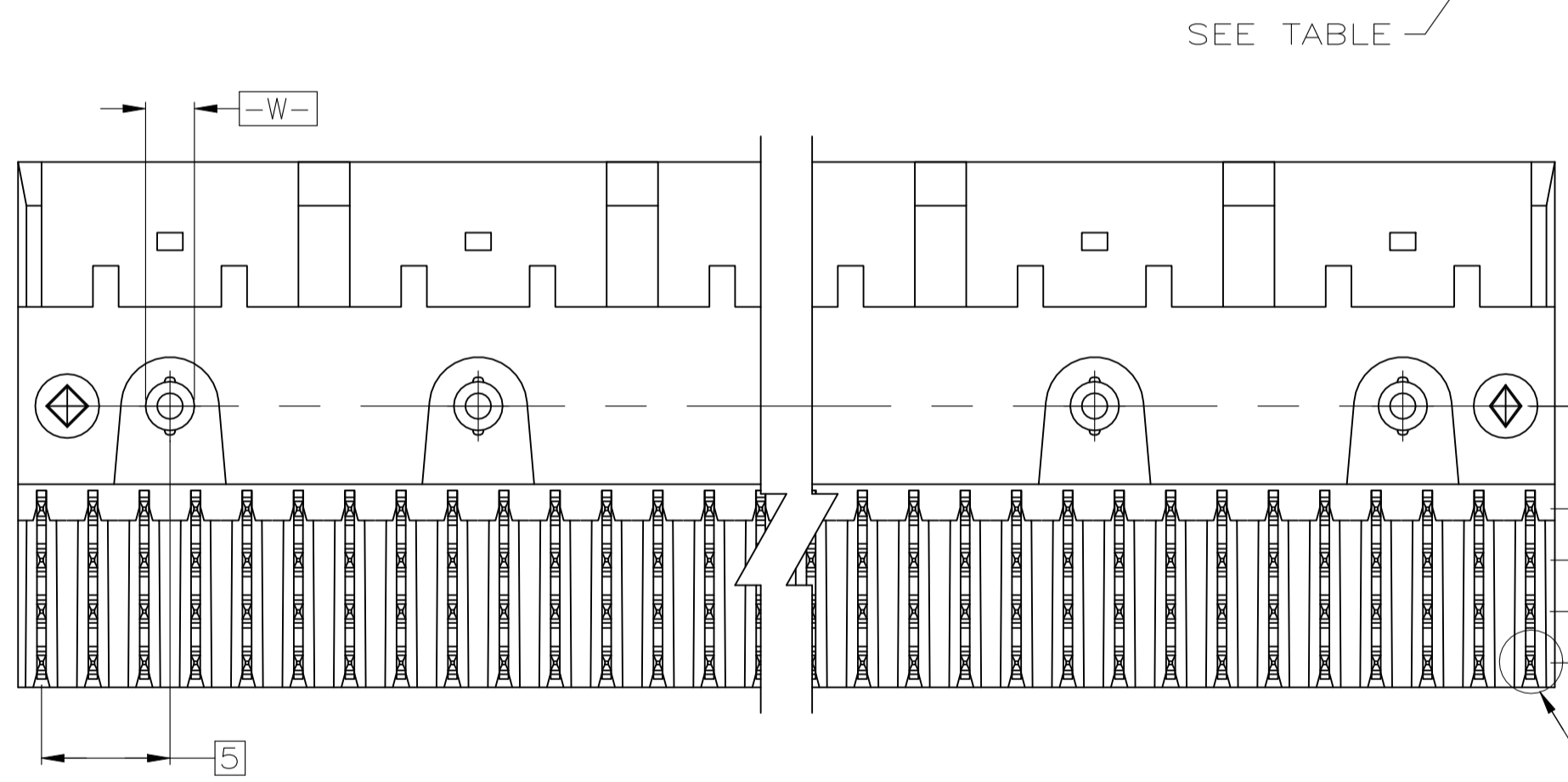
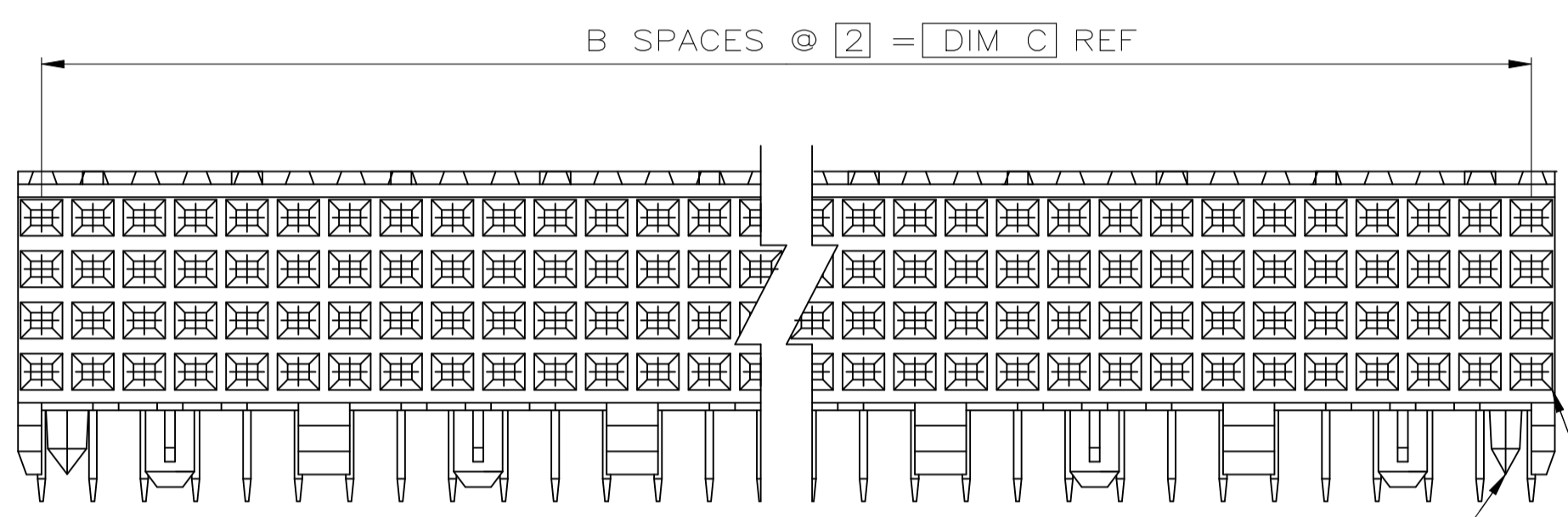
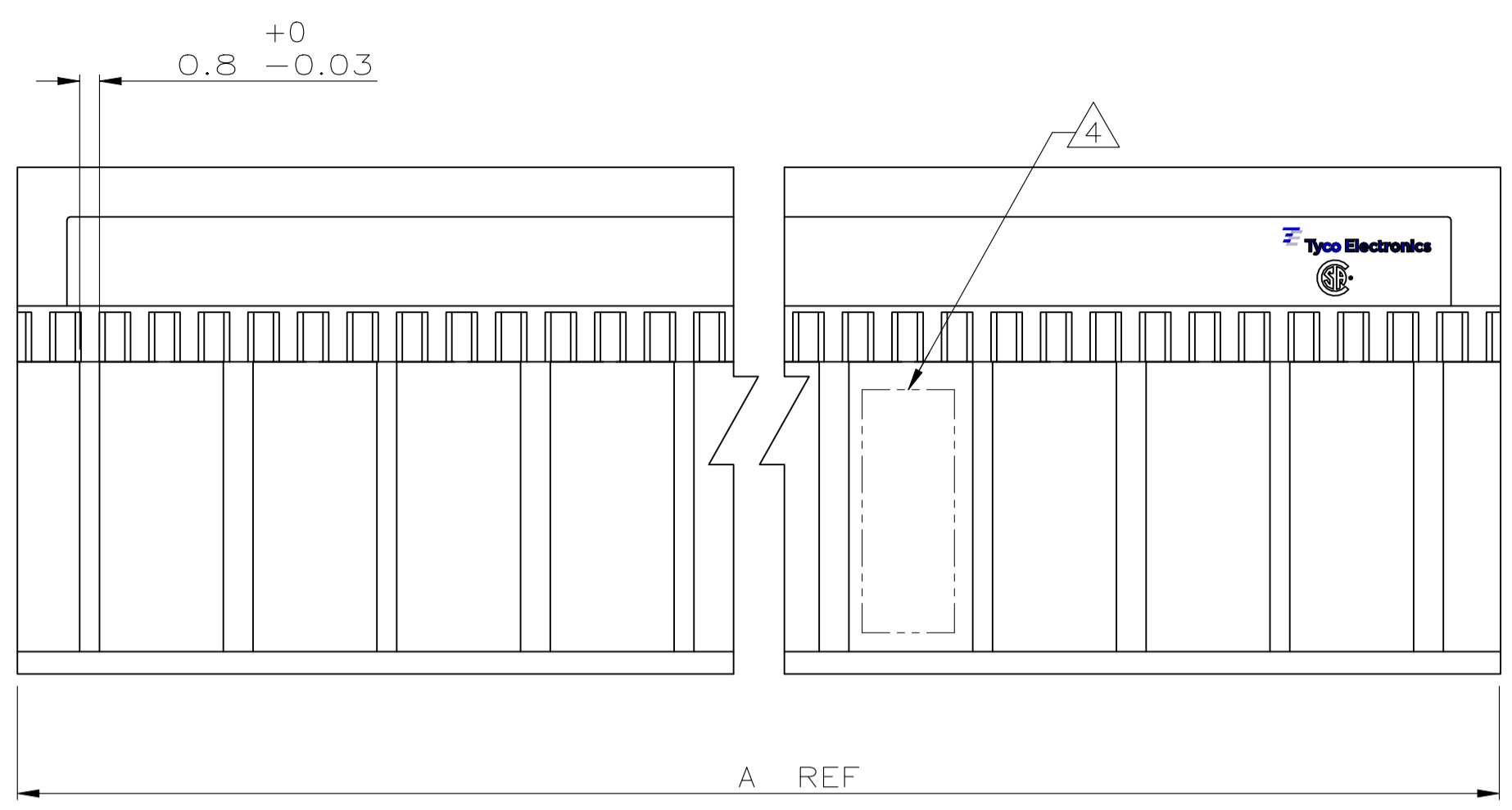


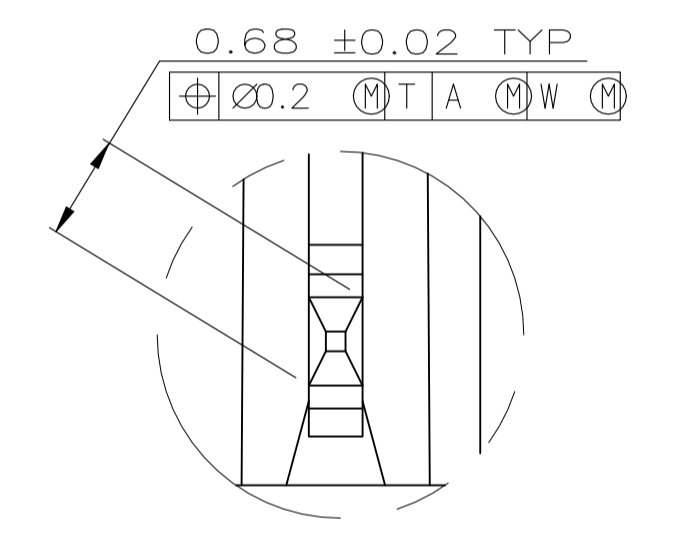
REVISIONS					
REV	DATE	DESCRIPTION	BY	CHK	APPV
AA	28SEP2020	REVISED PER ECO-20-013368	RZ	HL	



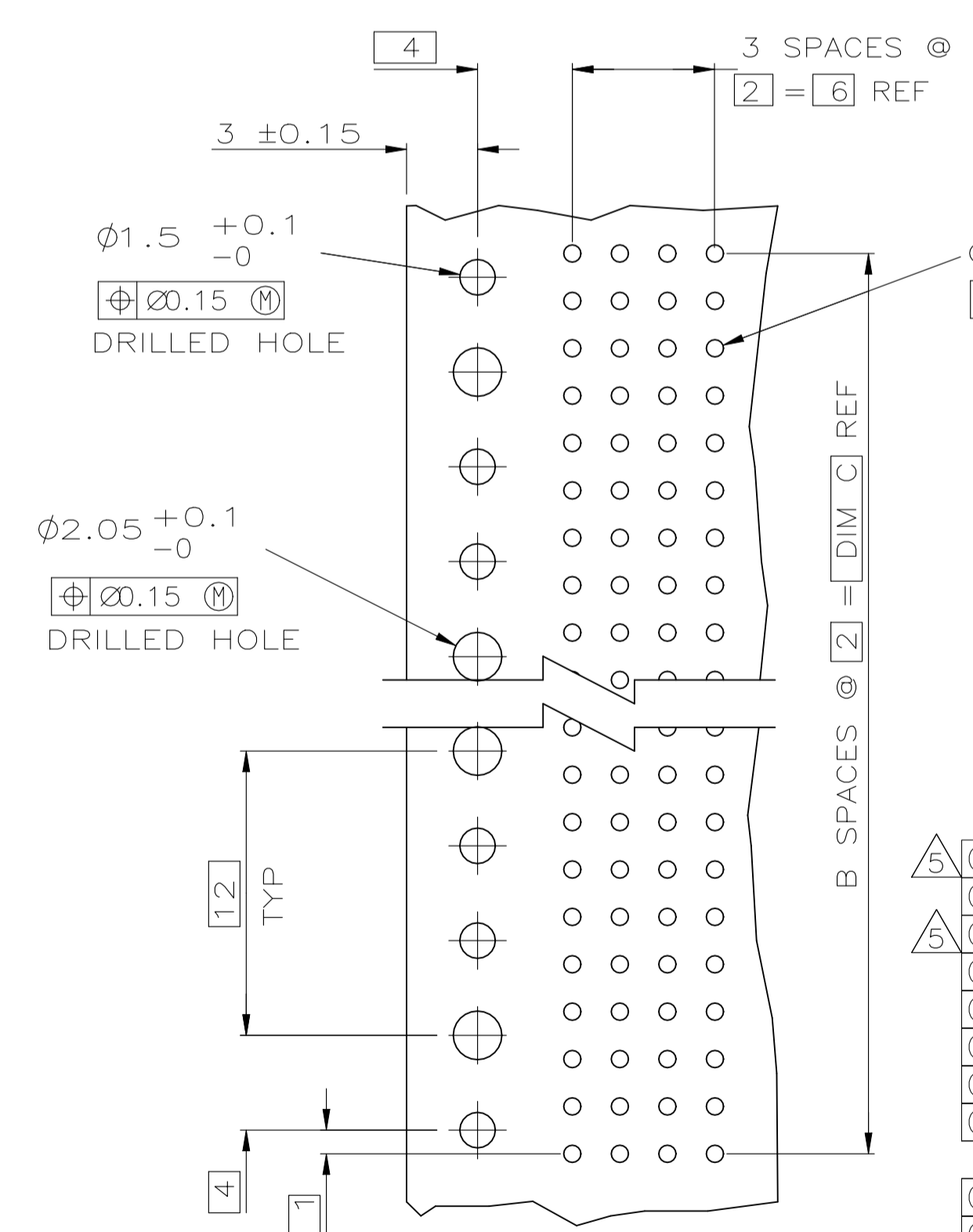
- 1 HOUSING MATERIAL: LIQUID CRYSTAL POLYMER PER ASTM D5138 LCP000 G30A 32250, COLOR: NATURAL.
- 2 CONTACT MATERIAL: PHOSPHOR-BRONZE.
- 3 CONTACT FINISH:
UNDERPLATE (ENTIRE CONTACT) - 0.00127 MIN. NICKEL
ON MATING SURFACES- CONFORMS TO ALL TESTING SPECIFIED FOR TELCORDIA UNCONTROLLED ENVIRONMENT
ON LEADS- 0.0006 MIN. TIN-LEAD, OVER UNDERPLATE
LUBRICATION (ENTIRE CONTACT) SURFACE CONDITIONER PER TE CONNECTIVITY SPEC 112-1002 AFTER PLATING.
- 4 PART MARKING PER AMP INCORPORATED SPECIFICATION 115-9009, LOCATED APPROXIMATELY AS SHOWN.
- 5 OBSOLETE PARTS: OBSOLETE CIS STREAMLINING PER D.RENAUD/D.SINISI

SEE TABLE POSITION A1

SEE DETAIL Z



DETAIL Z SCALE 20:1



RECOMMENDED CIRCUIT PATTERN PER IPC-D300 TYPE II, CLASS C (COMPONENT SIDE)

	NO	34	17	35.88	3	72	1-536511-2
5	OBSOLETE	NO	130	65	131.88	3	264
	OBSOLETE	NO	106	53	107.88	3	216
5	OBSOLETE	NO	118	59	119.88	3	240
	OBSOLETE	NO	82	41	83.88	3	168
	OBSOLETE	NO	66	33	67.88	3	136
	OBSOLETE	NO	58	29	59.88	3	120
	OBSOLETE	NO	70	35	71.88	3	144
	OBSOLETE	NO	94	47	95.88	3	192
	OBSOLETE	NO	46	23	47.88	3	96
	OBSOLETE	NO	22	11	23.88	3	48
	OBSOLETE	YES	10	5	11.88	3	24

POSITIONING PEGS	C	B	A	FINISH	NO OF POSN	PART NUMBER

THIS DRAWING IS A CONTROLLED DOCUMENT.		DIN D.R.BENDER 10/15/92	TE Connectivity
DIMENSIONS: mm		CHK S.HEADER 03/29/93	
TOLERANCES UNLESS OTHERWISE SPECIFIED:		APVD D. BAECHTLE 03/29/93	NAME RCPT. ASS'Y., SIGNAL MODULE, Z-PACK 2mm FB 4 ROW, 3.55mm PRESS FIT LEAD LENGTH
0. PLC ± -		APPLICATION SPEC	SIZE CAGE CODE DRAWING NO
1. PLC ± -			RESTRICTED TO
2. PLC ± .13			WEIGHT 0.000000 A1 00779 C=536511
3. PLC ± -			CUSTOMER DRAWING SCALE 4:1 SHEET 1 of 1 REV AA
4. PLC ± -			
ANGLES ± -			

单击下面可查看定价，库存，交付和生命周期等信息

[>>TE Connectivity\(泰科\)](#)