

DRAWING MADE IN AMERICAN PROJECTION

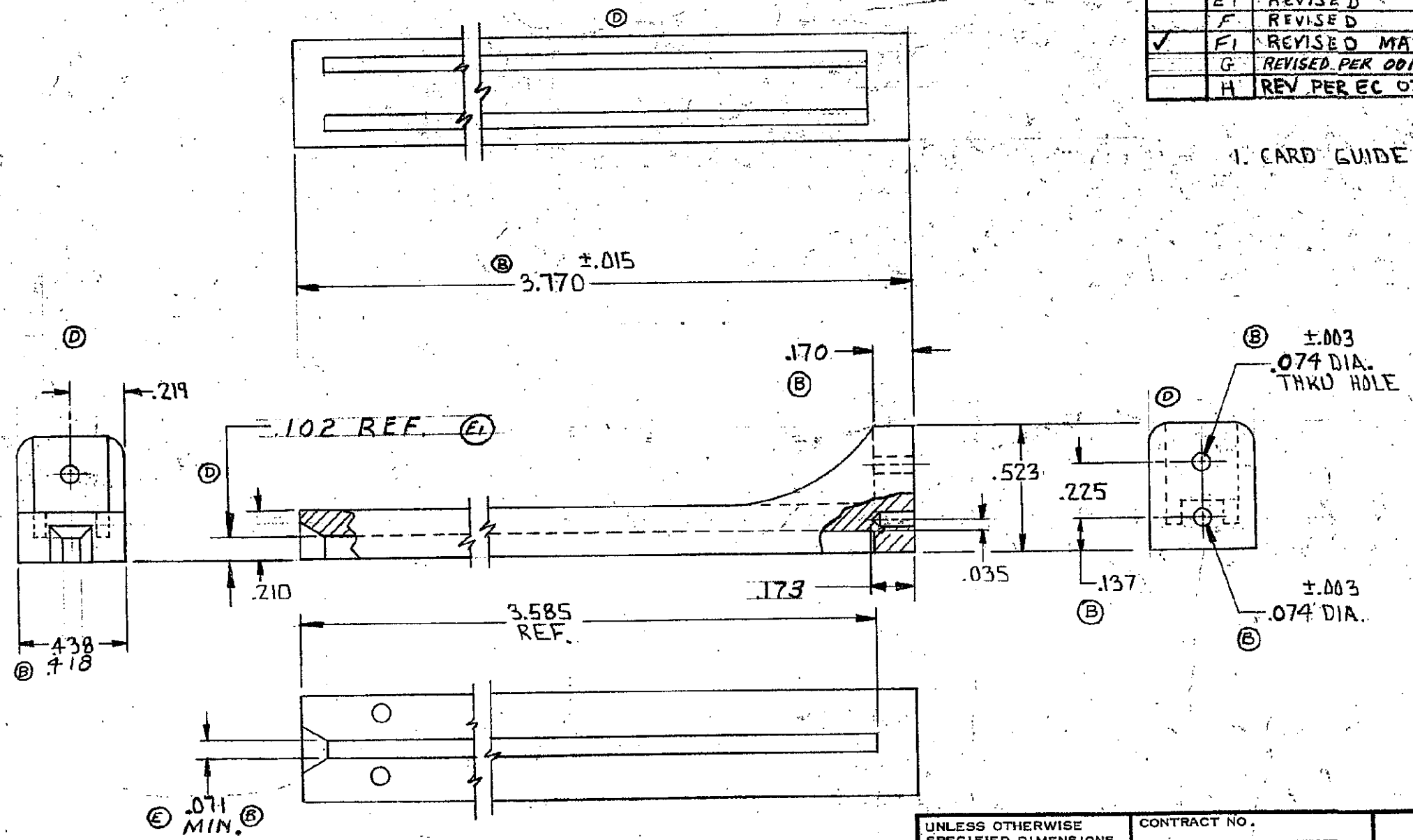
© 1970 BY AMP INCORPORATED. ALL RIGHTS RESERVED. AMP  
 Patents covered by PATENTS AND/OR PATENTS PENDING.

583671-1 I.A.S. SHOWN

Not to be reproduced nor published  
 without permission of AMP Incorporated

REVISIONS				
ZONE	LTR	DESCRIPTION	DATE	APPROVED
	D	RELEASED WAS 5172-231-2	11-24-70	DH
	A	REVISED 2849	M.S. 7-14-71	DH
	B	REVISED 3000	M.S. 5-6-71	DH
	C	REVISED MATL. 3030	M.S. 5-21-71	DH
	D	REVISED 3257	M.S. 11-12-71	DH
	E	REVISED 3325	M.S. 1-17-72	DH
	E1	REVISED 4375	M.S. 2-19-75	DR
	F	REVISED 4690	M.S. 2-11-76	DR
✓	F1	REVISED MATL. 5328	M.S. 11-10-77	
	G	REVISED PER 0010-0636-95	6-30-95	RB/J
	H	REV PER EC 0320-209-97	7-1-97	NS

D  
S  
C  
B  
A



1. CARD GUIDE ACCEPTS #2 SELF TAPPING SCREW

▲ GLASS FILLED NYLON OR GLASS FILLED  
 POLYESTER, COLOR: BLACK OR BROWN

LOC FT  
22  
PRINT DIST

UNLESS OTHERWISE SPECIFIED DIMENSIONS ARE IN INCHES TOLERANCES ON: DECIMALS ±.005 ANGLES ±.1	CONTRACT NO.	AMP		AMP INCORPORATED HARRISBURG, PENNSYLVANIA
	ARR. H. Waratyle 11/24/70 CHK. S.S. Helde 11/30/70 APPD. J. Hardeman 12-1-70 REF. R. Shawman 12-2-70	NAME	CARD GUIDE	
MATERIAL	DSGN APPD	SIZE	CODE IDENT NO.	NUMBER
▲	OTHER APPD	B	00779	583671
		SCALE		SHEET 1 OF 1

CUSTOMER DRAWING

单击下面可查看定价，库存，交付和生命周期等信息

[>>TE Connectivity\(泰科\)](#)