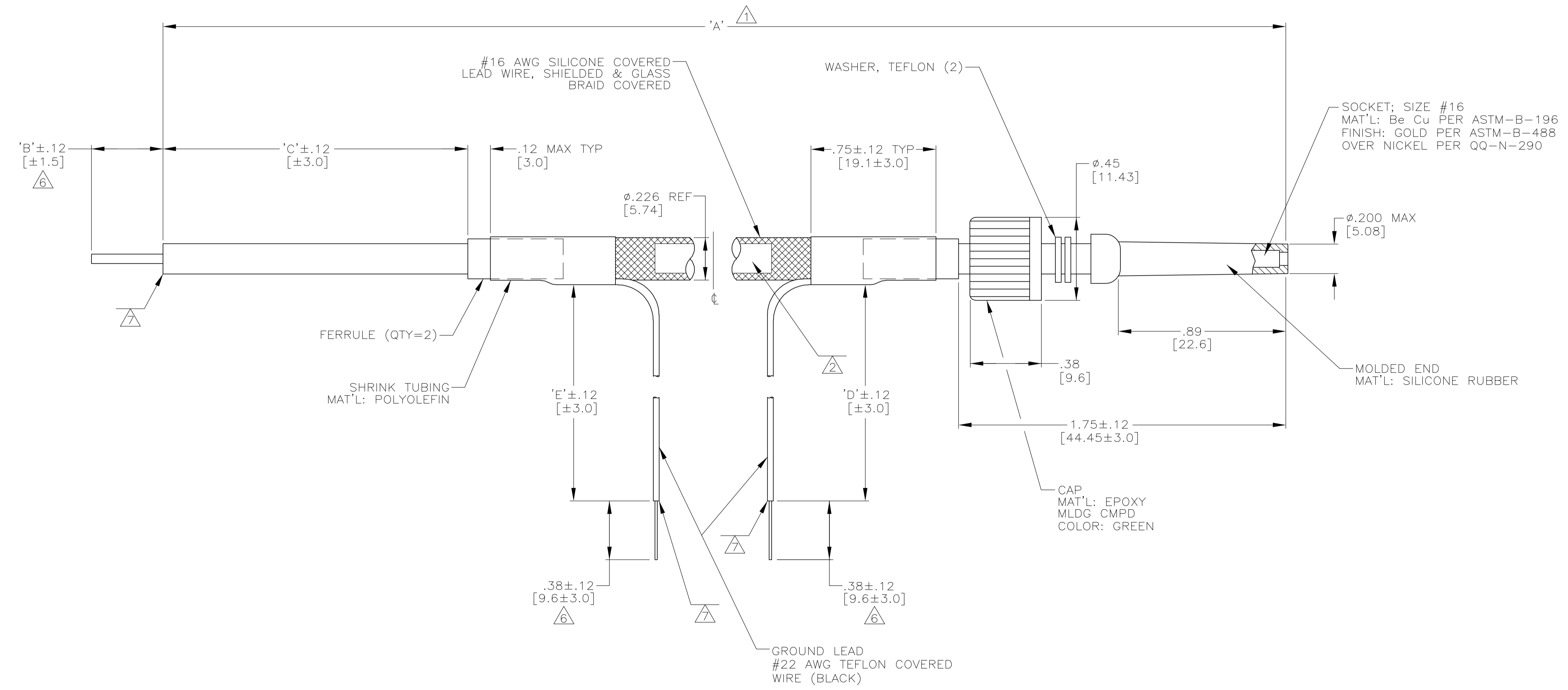


LOC	DIST	REVISIONS				
DF	SO	REV	DESCRIPTION	DATE	BY	APPD
R	REV PER ECO-05-002528	06-05	AA	DE		

PART NO.	'A'	'B'	'C'	'D'	'E'	REMARKS
858886-1	36.00 [914.4]	.38 [9.7]	6.00 [152.4]	-	12.00 [304.8]	OBSOLETE
858886-2	12.00 [304.8]	.25 [6.3]	1.50 [38.1]	8.00 [203.2]	-	
858886-3	60.00 [1524.0]	.38 [9.7]	6.00 [152.4]	12.00 [304.8]	12.00 [304.8]	OBSOLETE
858886-4	60.00 [1524.0]	.50 [12.7]	10.00 [254.0]	12.00 [304.8]	12.00 [304.8]	OBSOLETE
858886-5	30.00 [762.0]	.38 [9.7]	3.00 [76.2]	8.00 [203.2]	-	OBSOLETE
858886-6	36.00 [914.4]	.38 [9.7]	3.00 [76.2]	8.00 [203.2]	-	OBSOLETE
858886-7	96.00 [2438.4]	.38 [9.7]	3.00 [76.2]	12.00 [304.8]	12.00 [304.8]	OBSOLETE
858886-8	28.00 [711.2]	.38 [9.7]	3.00 [76.2]	12.00 [304.8]	-	OBSOLETE
858886-9	72.00 [1828.8]	.38 [9.7]	3.00 [76.2]	12.00 [304.8]	12.00 [304.8]	OBSOLETE
1-858886-0	28.00 [711.2]	.38 [9.7]	3.00 [76.2]	12.00 [304.8]	12.00 [304.8]	OBSOLETE
1-858886-1	8.00 [203.2]	.38 [9.7]	2.00 [50.8]	8.00 [203.2]	8.00 [203.2]	OBSOLETE
1-858886-2	9.00 [228.6]	.38 [9.7]	3.00 [76.2]	-	4.00 [101.6]	OBSOLETE
1-858886-3	16.00 [406.4]	.38 [9.7]	3.00 [76.2]	8.00 [203.2]	8.00 [203.2]	OBSOLETE
1-858886-4	18.00 [457.2]	.38 [9.7]	3.00 [76.2]	8.00 [203.2]	8.00 [203.2]	
1-858886-5	10.60 [269.2]	-	4.00 [101.6]	12.00 [304.8]	12.00 [304.8]	OBSOLETE
1-858886-6	10.00 [254.0]	-	4.00 [101.6]	12.00 [304.8]	12.00 [304.8]	OBSOLETE
1-858886-7	8.50 [215.9]	-	4.00 [101.6]	12.00 [304.8]	12.00 [304.8]	OBSOLETE
1-858886-8	24.00 [609.6]	.38 [9.7]	3.00 [76.2]	12.00 [304.8]	12.00 [304.8]	OBSOLETE
1-858886-9	40.00 [1016.0]	.38 [9.7]	4.00 [101.6]	12.00 [304.8]	12.00 [304.8]	OBSOLETE
5-858886-2	12.00 [304.8]	.25 [6.3]	1.50 [38.1]	8.00 [203.2]	-	

- 1. TOLERANCE OF LEAD LENGTH:
UP TO 24 INCHES [609.6] = ±.12 [±3.0]
24 INCHES [609.6] & UP = 1%
- 2. MARKED PER MIL-STD-130 WITH BLACK INK.
- 3. LEAD COLOR IS WHITE UNLESS OTHERWISE SPECIFIED.
- 4. LEAD WILL MATE WITH AMP 1/2L RECEPTACLE WITH .89 [22.6] BARREL DEPTH.
- 5. OPERATING VOLTAGE: 15 KVDC AT 0 TO 70,000 FEET, -55°C TO 125°C.
- 6. WHERE APPLICABLE PIGTAIL IS SOLDER DIPPED.
- 7. INSULATION CUT TO LENGTH, BUT NOT REMOVED.



THIS DRAWING IS A CONTROLLED DOCUMENT.		DWG: C.C.THOMAS 07-AUG-91		Tyco Electronics Corporation Harrisburg, Pa 17105-3608												
DIMENSIONS: INCHES		CHK: S.GLATFELTER 20-AUG-91		APVD: S.GLATFELTER 20-AUG-91	NAME: LEAD ASSEMBLY, SGL END LGH-1/2L SHIELDED											
TOLERANCES UNLESS OTHERWISE SPECIFIED:		<table border="1"> <tr><td>0 PLC</td><td>± -</td></tr> <tr><td>1 PLC</td><td>± -</td></tr> <tr><td>2 PLC</td><td>± .02 [0.5]</td></tr> <tr><td>3 PLC</td><td>± -</td></tr> <tr><td>4 PLC</td><td>± -</td></tr> <tr><td>ANGLES</td><td>± -</td></tr> </table>			0 PLC	± -	1 PLC	± -	2 PLC	± .02 [0.5]	3 PLC	± -	4 PLC	± -	ANGLES	± -
0 PLC	± -															
1 PLC	± -															
2 PLC	± .02 [0.5]															
3 PLC	± -															
4 PLC	± -															
ANGLES	± -															
MATERIAL: SEE CALLOUTS		FINISH: SEE CALLOUTS	WEIGHT: -	SIZE: A1												
CUSTOMER DRAWING		SCALE: 3:1	SHEET: 1 OF 1	REV: R												

单击下面可查看定价，库存，交付和生命周期等信息

[>>TE Connectivity\(泰科\)](#)