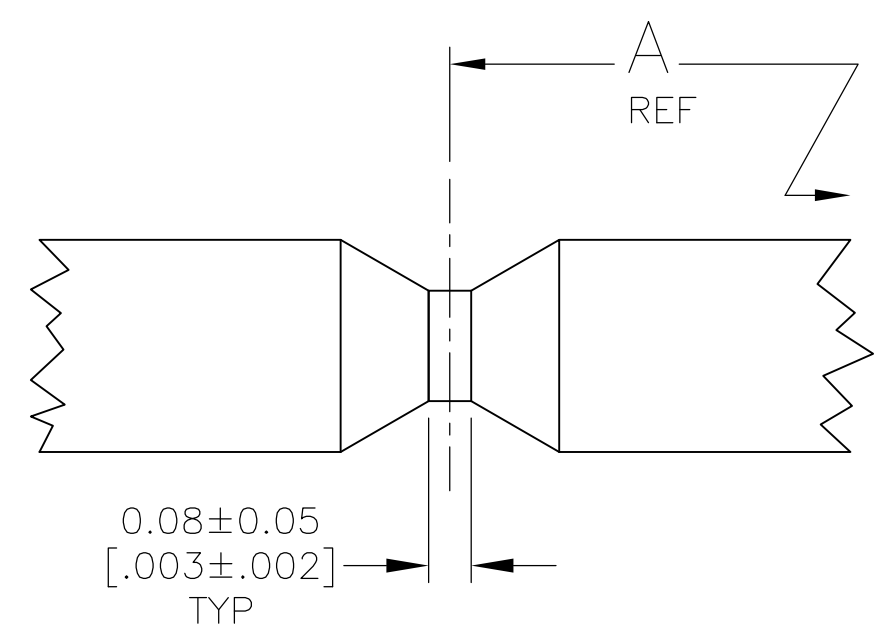
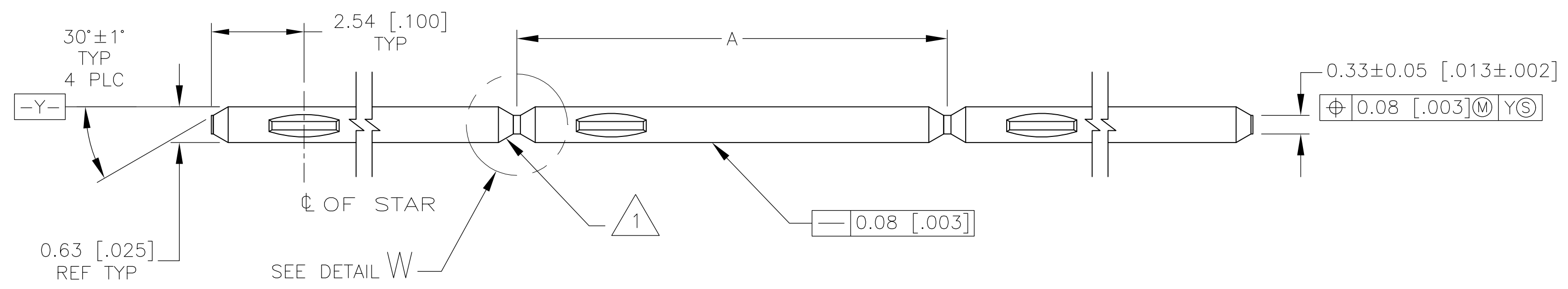
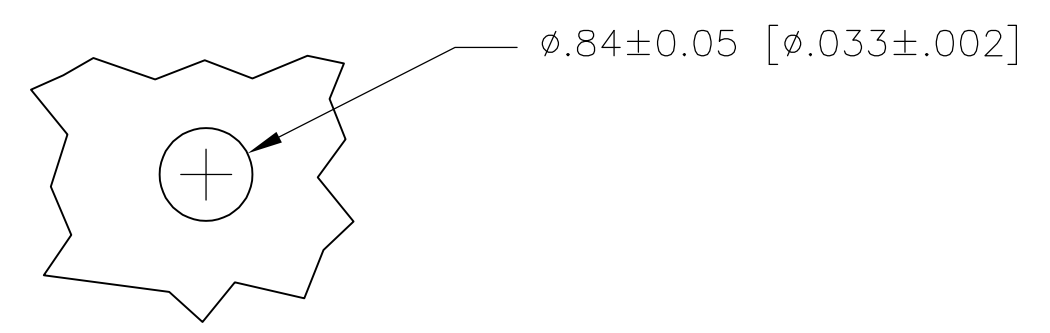


| LOC | DIST | REVISIONS | | | |
|-----|------|---------------------------|---------|-----|------|
| P | LTR | DESCRIPTION | DATE | DWN | APVD |
| D | | ECO-07-021031 | 11SEP07 | MB | JG |
| D1 | | REVISED PER ECO-09-020689 | 25AUG09 | KK | AEG |

- 1 THE NOTCHED EDGES AND POST TIPS WILL NOT BE PLATED.
- 2 0.00254-0.00508 [.000100-.000200] MATTE TIN OVER 0.00127 [.000050] MIN NICKEL.
- 3 OBSOLETE PARTS: OBSOLETE CIS STREAMLINING PER D.RENAUD/D.SINISI



DETAIL W
30:1



RECOMMENDED TIN PLATED HOLE SIZE

| | | |
|-------|---------|------------|
| 25.40 | [1.000] | 6-147433-1 |
| 25.15 | -.990] | 6-147433-0 |
| 24.89 | -.980] | 5-147433-9 |
| 24.64 | -.970] | 5-147433-8 |
| 24.38 | -.960] | 5-147433-7 |
| 24.13 | -.950] | 5-147433-6 |
| 23.88 | -.940] | 5-147433-5 |
| 23.62 | -.930] | 5-147433-4 |
| 23.37 | -.920] | 5-147433-3 |
| 23.11 | -.910] | 5-147433-2 |
| 22.86 | -.900] | 5-147433-1 |
| 22.61 | -.890] | 5-147433-0 |
| 22.35 | -.880] | 4-147433-9 |
| 22.10 | -.870] | 4-147433-8 |
| 21.84 | -.860] | 4-147433-7 |
| 21.59 | -.850] | 4-147433-6 |
| 21.34 | -.840] | 4-147433-5 |
| 21.08 | -.830] | 4-147433-4 |
| 20.83 | -.820] | 4-147433-3 |
| 20.57 | -.810] | 4-147433-2 |
| 20.32 | -.800] | 4-147433-1 |
| 20.07 | -.790] | 4-147433-0 |
| 19.81 | -.780] | 3-147433-9 |
| 19.56 | -.770] | 3-147433-8 |
| 19.30 | -.760] | 3-147433-7 |
| 19.05 | -.750] | 3-147433-6 |
| 18.80 | -.740] | 3-147433-5 |
| 18.54 | -.730] | 3-147433-4 |
| 18.28 | -.720] | 3-147433-3 |
| 18.03 | -.710] | 3-147433-2 |
| 17.78 | -.700] | 3-147433-1 |
| 17.53 | -.690] | 3-147433-0 |
| 17.27 | -.680] | 2-147433-9 |
| 17.02 | -.670] | 2-147433-8 |
| 16.76 | -.660] | 2-147433-7 |
| 16.51 | -.650] | 2-147433-6 |
| 16.26 | -.640] | 2-147433-5 |
| 16.00 | -.630] | 2-147433-4 |
| 15.75 | -.620] | 2-147433-3 |
| 15.49 | -.610] | 2-147433-2 |
| 15.24 | -.600] | 2-147433-1 |
| 14.99 | -.590] | 2-147433-0 |
| 14.73 | -.580] | 1-147433-9 |
| 14.48 | -.570] | 1-147433-8 |
| 14.22 | -.560] | 1-147433-7 |
| 13.97 | -.550] | 1-147433-6 |
| 13.72 | -.540] | 1-147433-5 |
| 13.46 | -.530] | 1-147433-4 |
| 13.21 | -.520] | 1-147433-3 |
| 12.95 | -.510] | 1-147433-2 |
| 12.70 | -.500] | 1-147433-1 |
| 12.45 | -.490] | 1-147433-0 |
| 12.19 | -.480] | 147433-9 |
| 11.94 | -.470] | 147433-8 |
| 11.68 | -.460] | 147433-7 |
| 11.43 | -.450] | 147433-6 |
| 11.18 | -.440] | 147433-5 |
| 10.92 | -.430] | 147433-4 |
| 10.67 | -.420] | 147433-3 |
| 10.41 | -.410] | 147433-2 |
| 10.16 | -.400] | 147433-1 |

OBSOLETE



OBSOLETE



| | | | | |
|--|--|-------------------------------|---|--------------------|
| THIS DRAWING IS A CONTROLLED DOCUMENT. | | DWN B. HAYMAKER 07JUL00 | Tyco Electronics Corporation Harrisburg, PA 17105-3608 | |
| DIMENSIONS: INCHES | | CHK J. GESFORD 07JUL00 | NAME .025 SQUARE CONTINUOUS POST WITH STAR FEATURE | |
| TOLERANCES UNLESS OTHERWISE SPECIFIED: | | APVD J. GESFORD 07JUL00 | RESTRICTED TO | |
| 0 PLC ± - | | PRODUCT SPEC | - | |
| 1 PLC ± - | | APPLICATION SPEC | - | |
| 2 PLC ± - | | 114-13011 | SIZE A2 | CAGE CODE 00779 |
| 3 PLC ± 0.13[.005] | | WEIGHT | DRAWING NO 147433 | REV D1 |
| 4 PLC ± - | | CUSTOMER DRAWING | SCALE 15:1 | SHEET 1 of 1 |
| ANGLES ± - | | | | |
| FINISH | | | | |
| BRASS | | | | |

单击下面可查看定价，库存，交付和生命周期等信息

[>>TE Connectivity\(泰科\)](#)