

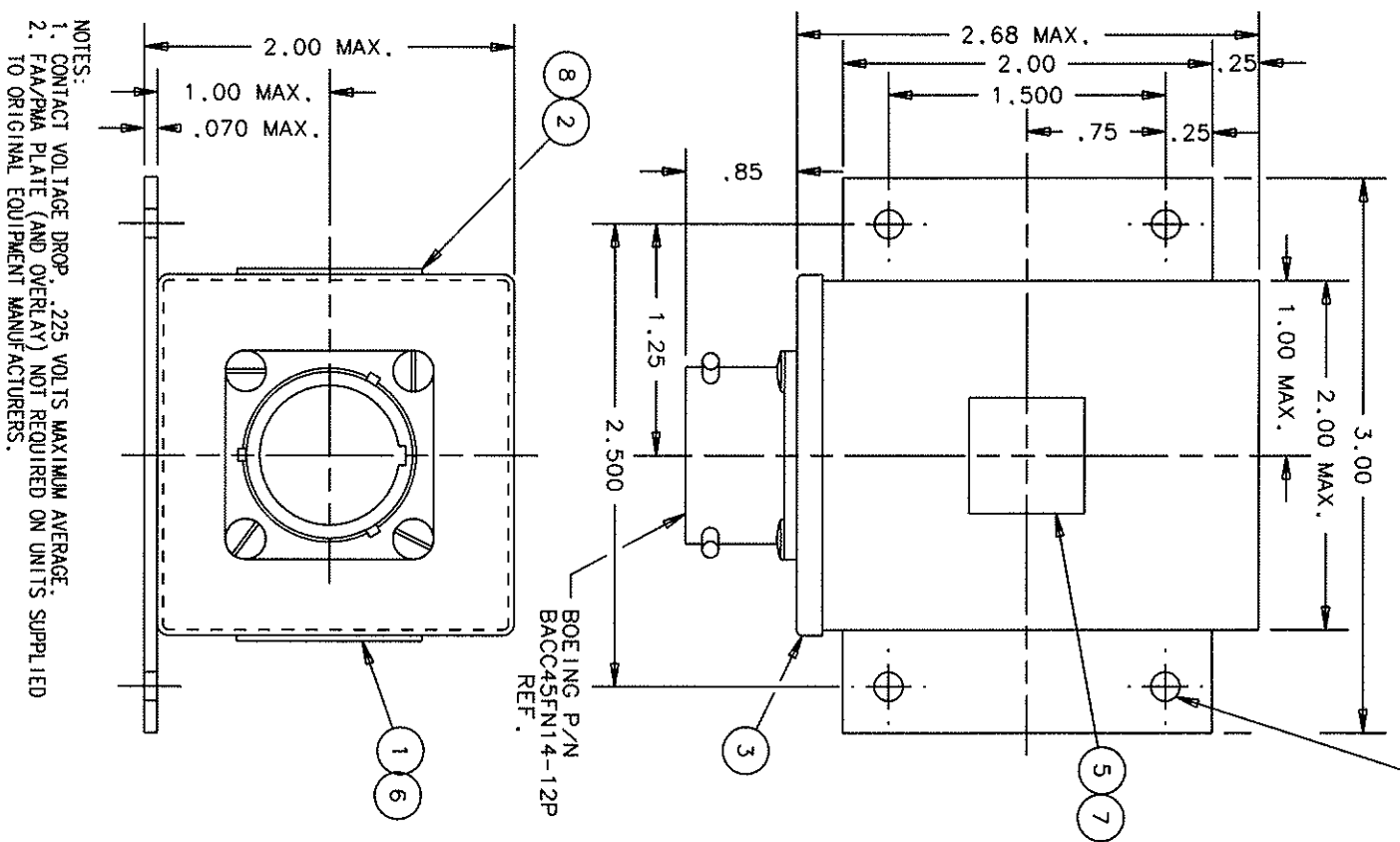
FAA-PMA

REV.	DESCRIPTION	DATE	APPROVED
1	UPDATE SPECIFICATIONS	93/03/10	W.S.
2	ADDED TOLERANCES	94/06/29	R.S.
3	NOTE 2 ADDED	98/05/04	R.S.
4	*BOEING P/N* & *100,000 MECH OPER* ADDED, 3 AXIS WAS AXES	99/05/24	RS

REVISIONS

RELEASED

.156 +.010 DIA. HOLE
4 MITG. HOLES



ELECTRICAL
CONTACT FORM
CONTACT RATING (AMPS PER POLE AT 155 VAC AND 28 VDC)
CONTACT LIFE

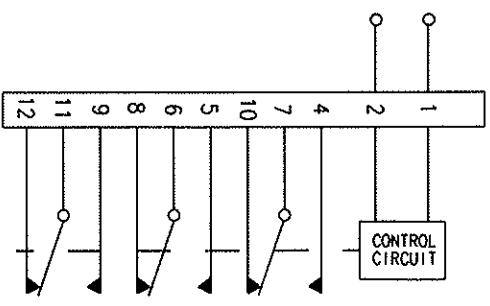
CONTACT BOUNCE
DUTY CYCLE
NOM. OPERATING VOLTAGE
MAX. OPERATING VOLTAGE
OPERATING FREQUENCY
PICK-UP VOLTAGE
PICK-UP TIME
DROP-OUT VOLTAGE
DROP-OUT TIME DELAY

INPUT VOLTAGE TRANSIENTS
OPERATING CURRENT
DIELECTRIC WITHSTANDING VOLTAGE
INSULATION RESISTANCE
ENVIRONMENTAL
AMBIENT TEMPERATURE
VIBRATION
SHOCK
ACCELERATION
ALTITUDE
MECHANICAL WEIGHT
CONSTRUCTION
SEAL

3PDT
RESISTIVE
INDUCTIVE
MOTOR
LAMP

100,000 OPERATIONS, MECHANICAL, MIN.
100,000 OPERATIONS, MINIMUM AT RATED RESISTIVE LOAD
3 MILLISECONDS MAXIMUM
CONTINUOUS
115 VAC, RMS L-N
122 VAC, RMS L-N
400 ± 20 HZ.
109 ± 2 VRMS
70 MILLISECONDS MAXIMUM
104 ± 2 VRMS
200-400 MILLISECONDS, WHEN THE RELAY IS IN THE ENERGIZED POSITION AND THE VOLTAGE DROPS BELOW 104 ± 2 VRMS AND ABOVE 88 ± 4 VRMS, THE RELAY WILL RE-MAIN ENERGIZED FOR 200-400 MILLI-SECONDS BEFORE DE-ENERGIZING, WHEN THE VOLTAGE DROPS BELOW 88 ± 4 VRMS NO TIME DELAY IS REQUIRED, WHEN THE VOLTAGE DROPS TO 30 VOLTS OR LESS, THE RELAY WILL DE-ENERGIZE IN 50 MILLISECONDS MAXIMUM.
PER MIL-STD-704A
100 MILLIAMPS MAX. AT 25°C
1000VRMS, 60 HZ.

1000 MEGOHMS, MINIMUM, AT 500 VDC
-55°C TO +85°C (OPERATING)
-55°C TO +125°C (NON-OPERATING)
PER BOEING SPECIFICATION
DE-44599 CATEGORY C ZONE 1
30 C/S, 11 MILLISECOND, 1/2 SINE,
3 AXIS
20 C/S IN ANY AXIS
0 TO 80,000 FEET
10 OUNCES MAX.
ALUMINUM METAL CAN, MOUNTING FLANGES AND COVER, SENSOR POTTED
BLACK LAQUER PAINT
SOLDER SEALED COVER, HERMETIC SEALED CONTACTS



FIND NO	QTY	PART OR IDENTIFYING NO	NONAUGNATURE OR DESCRIPTION	DRAWING OR SPECIFICATION	MATERIAL OR NOTE
8	1	39529-038	OVERLAY		
7	1	39529-047	OVERLAY		
6	1	39529-073	OVERLAY		
5	1	39400-036	PLATE - FAA / PMA		
3	1	36313-010	RELAY ASSEMBLY - PRIMARY		
2	1	36278-001	PLATE - WIRING DIAGRAM		
1	1	16043-056	PLATE - NAME (LOCATION OPT.)		

UNLESS OTHERWISE SPECIFIED DIMENSIONS ARE IN INCHES TOLERANCES ON	2 PL. DEC. 3 PL. DEC. ANGLES	± .06	± .010	± 1°
DR BY	RS	99/05/27		
CHK BY	RS	99/05/27		
ENGR	RS	99/05/27		
MF G	RS	99/05/28		
RELEASE				
CONTR NO.				
GOVT APPVAL				

SIZE	CODE IDENT	DWG NO.
C	74063	E-329E
SCALE	NONE	SHEET

HARTMAN ELECTRICAL MANUFACTURING
MANSFIELD, OHIO

RELAY-VOLTAGE SENSING

093

NOTES:
1. CONTACT VOLTAGE DROP, .225 VOLTS MAXIMUM AVERAGE.
2. FAA/PMA PLATE (AND OVERLAY) NOT REQUIRED ON UNITS SUPPLIED TO ORIGINAL EQUIPMENT MANUFACTURERS.

单击下面可查看定价，库存，交付和生命周期等信息

[>>TE Connectivity\(泰科\)](#)