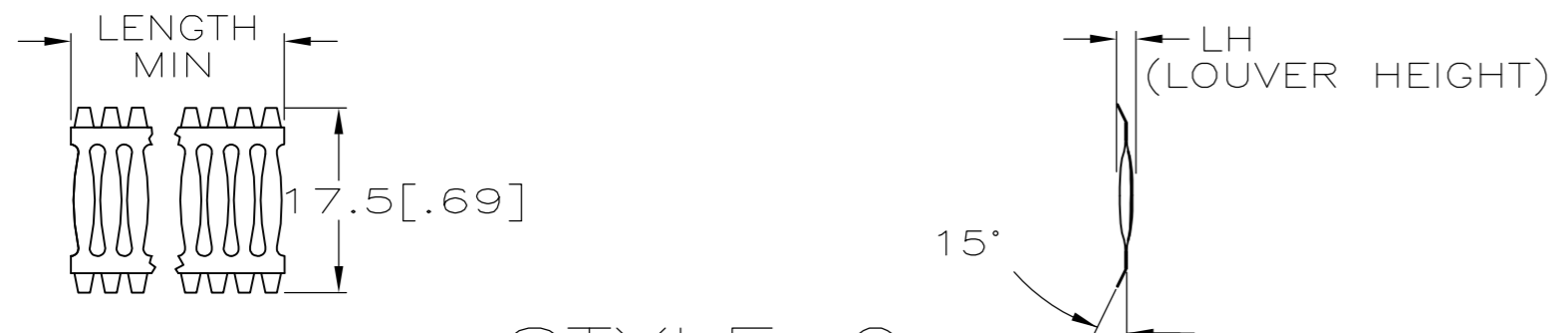
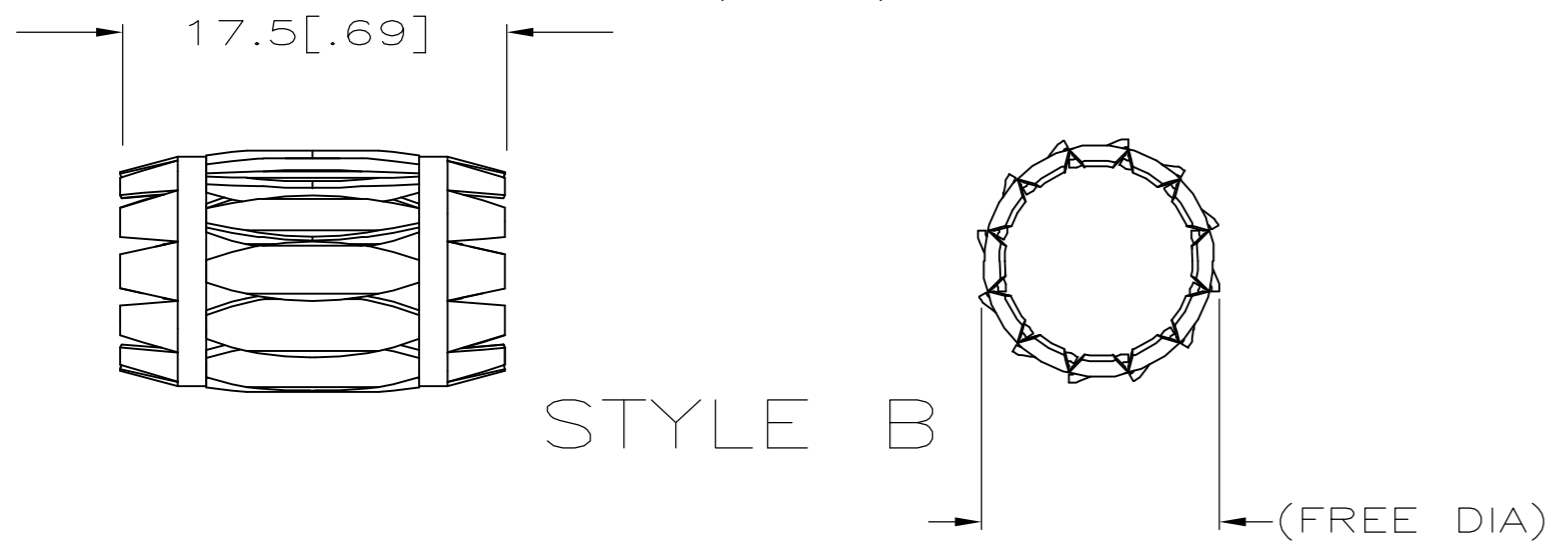


THIS DRAWING IS UNPUBLISHED. RELEASED FOR PUBLICATION
 © COPYRIGHT - By - ALL RIGHTS RESERVED.

REVISIONS							
P	LTR	DESCRIPTION			DATE	DWN	APVD
	S	REVISED PER	ECO-17-013723		21SEP2017	RS	MZ



STYLE C
(STRIP)



STYLE B

- FINISH: GOLD PLATE 10uIN MINIMUM.
- FINISH: SILVER PLATE 200 uIN MINIMUM.
- FINISH: NICKEL PLATE 40 uIN MINIMUM.
- FINISH: NICKEL PLATE 100 uIN MINIMUM.
-
-
-
- NESTED AND WELDED 13 AND 14 LOUVERED BAND.
-
-
- PLATING NOTES ARE TO BE INTEREPRETED AS FOLLOWS:
6-8 AS 6 OVER 8.
- PRODUCT IS SOLD BY THE FOOT. MINIMUM ORDER LENGTH IS 3 FEET.

- PRELIMINRY PART NUMBER.
- OBSOLETE PARTS: OBSOLETE CIS STREAMLINING PER D.RENAUD/D.SINISI

(FREE DIA)	STYLE	LH	MAT'L	MATING PIN Ø REF	LENGTH	PLATING	NUM LOUV	MAT'L THK	REF	PART NUMBER	
△14	OBSOLETE	[.72]	B	[.050]	BeCu	19.7 [.775]	2-3	23	0.15 [.006]	5-192007-4	
OBSOLETE	[.72]	B	[.052]	BeCu	19.7 [.775]		2-3	23	0.20 [.008]	5-192007-0	
OBSOLETE	-	C	[.052]	BeCu		NOTE 12	2-3	-	0.20 [.008]	4-192007-9	
OBSOLETE	[.50]	△8 B	--	BeCu	12.7 [.500]		PREPL	△8 27	0.10 [.004]	4-192007-8	
OBSOLETE	[1.42]	B	[.048]	BeCu	38.1 [1.500]		UNPL	45	0.08 [.003]	4-192007-7	
OBSOLETE	[1.04]	B	[.048]	BeCu	28.5 [1.121]		UNPL	33	0.08 [.003]	4-192007-6	
OBSOLETE	[.82]	B	[.048]	BeCu	22.2 [.875]		UNPL	26	0.08 [.003]	4-192007-5	
△14	[1.42]	B	[.050]	BeCu	38.1 [1.500]		2-3	45	0.15 [.006]	4-192007-4	
OBSOLETE	[1.71]	B	[.050]	BeCu	44.4 [1.750]		2-3	54	0.15 [.006]	01305 4-192007-2	
OBSOLETE	[1.42]	B	[.048]	BeCu	38.1 [1.500]		2-3	45	0.08 [.003]	01284 4-192007-1	
OBSOLETE	[1.39]	B	[.050]	BeCu	34.9 [1.375]		2-3	44	0.10 [.004]	01307 4-192007-0	
△14	[1.32]	B	[.052]	BeCu	34.9 [1.375]		2-3	42	0.20 [.008]	01196 3-192007-9	
△14	[1.32]	B	[.050]	BeCu	34.9 [1.375]		2-3	42	0.15 [.006]	01309 3-192007-8	
△14	[1.07]	B	[.050]	BeCu	28.6 [1.129]		2-3	34	0.15 [.006]	01301 3-192007-7	
OBSOLETE	[1.04]	B	[.048]	BeCu	28.5 [1.121]		2-3	33	0.08 [.003]	01285 3-192007-6	
△14	[1.00]	B	[.050]	BeCu	27.1 [1.068]		2-3	32	0.15 [.006]	01263 3-192007-5	
OBSOLETE									01187	3-192007-4	
OBSOLETE									01201	3-192007-3	
△14	[.94]	B	[.052]	BeCu	25.4 [1.000]		2-3	30	0.20 [.008]	01178 3-192007-2	
	[.94]	B	[.050]	BeCu	25.4 [1.000]		2-3	30	0.15 [.006]	01177 3-192007-1	
OBSOLETE	[.94]	B	[.050]	BeCu	25.4 [1.000]		UNPL	30	0.15 [.006]	01240 3-192007-0	
△14	[1.70]	B	[.050]	BeCu	22.2 [.875]		2-3	26	0.15 [.006]	01170 2-192007-9	
△14	[.78]	B	[.050]	BeCu	22.2 [.875]		2-3	25	0.15 [.006]	01169 2-192007-8	
△14	[.81]	B	[.050]	BeCu	22.2 [.875]		2-3	26	0.10 [.004]	01276 2-192007-7	
OBSOLETE	[.81]	B	[.048]	BeCu	22.2 [.875]		2-3	26	0.08 [.003]	01302 2-192007-6	
OBSOLETE	[.69]	B	[.052]	BeCu	19 [.750]		2-3	22	0.20 [.008]	01318 2-192007-5	
OBSOLETE	[.65]	B	[.050]	BeCu	17.4 [.687]		2-3	21	0.15 [.006]	01150 2-192007-4	
OBSOLETE	[.56]	B	[.050]	BeCu	15.9 [.625]		2-3	18	0.15 [.006]	01298 2-192007-3	
△14	[.53]	B	[.052]	BeCu	15.7 [.620]		2-3	17	0.20 [.008]	01313 2-192007-2	
OBSOLETE									01146	2-192007-1	
△14	OBSOLETE	--	C	[.050]	BeCu	--	NOTE 12	1-3	--	0.15 [.006]	-- 2-192007-0
	[.53]	B	[.050]	BeCu	15.7 [.620]		2-3	17	0.15 [.006]	01145 1-192007-9	
	[.53]	B	[.050]	BeCu	15.7 [.620]		UNPL	17	0.15 [.006]	01241 1-192007-8	
	[.50]	B	[.050]	BeCu	12.7 [.500]		1-3	14	0.15 [.006]	01290 1-192007-7	
	[.50]	B	[.050]	BeCu	12.7 [.500]		4	14	0.15 [.006]	01291 1-192007-6	
OBSOLETE	[.50]	B	[.050]	BeCu	12.7 [.500]		2-3	14	0.15 [.006]	01138 1-192007-4	
	[.50]	B	[.050]	BeCu	12.7 [.500]		UNPL	14	0.15 [.006]	01235 1-192007-3	
△14	[.50]	B	[.046]	BeCu	12.7 [.500]		UNPL	14	0.08 [.003]	01296 1-192007-2	
	[.43]	B	[.050]	BeCu	11.1 [.437]		2-3	12	0.15 [.006]	01133 1-192007-1	
	[.34]	B	[.050]	BeCu	7.9 [.312]		2-3	9	0.15 [.006]	01115 1-192007-0	
OBSOLETE	[.30]	B	[.050]	BeCu	7.9 [.312]		2-3	8	0.15 [.006]	01119 1-192007-9	
△14	OBSOLETE	--	C	[.050]	BeCu	--	4.90 IN	2-3	49	0.15 [.006]	01038 1-192007-8
	--	C	[.050]	BeCu	--	NOTE 12	2-3	--	0.15 [.006]	01010 1-192007-7	
△14	OBSOLETE	--	C	[.050]	BeCu	--	66 FT	UNPL	--	0.15 [.006]	-- 1-192007-6
OBSOLETE	--	C	[.050]	BeCu	--	66 FT	UNPL	--	0.15 [.006]	01019 1-192007-5	
OBSOLETE	--	C	[.050]	BeCu	--	66 FT	2-3	--	0.10 [.004]	01016 1-192007-4	
△14	OBSOLETE	--	C	[.050]	BeCu	--	66 FT	UNPL	--	0.10 [.004]	01018 1-192007-3
OBSOLETE	--	C	[.046]	BeCu	--	66 FT	2-3	--	0.08 [.003]	01000 1-192007-2	
OBSOLETE	--	C	[.046]	BeCu	--	NOTE 12	UNPL	--	0.08 [.003]	01024 1-192007-1	

THIS DRAWING IS A CONTROLLED DOCUMENT.

DIMENSIONS: mm [INCHES]	TOLERANCES UNLESS OTHERWISE SPECIFIED: 0 PLC ± - 1 PLC ± - 2 PLC ± 0.5 [.02] 3 PLC ± 0.25 [.010] 4 PLC ± - ANGLES ± -	DWN S.URICH 25JAN01 CHK G.STEINHAUER 25JAN01 APVD G.STEINHAUER 25JAN01 PRODUCT SPEC APPLICATION SPEC	NAME G.STEINHAUER	SIZE A2 CAGE CODE 00779 DRAWING NO C=192007	RESTRICTED TO
MATERIAL SEE TABLE	FINISH SEE TABLE	WEIGHT -	CUSTOMER DRAWING	SCALE NTS	SHEET 1 OF 1

TE Connectivity
 CONTACT BAND, MALE

单击下面可查看定价，库存，交付和生命周期等信息

[>>TE Connectivity\(泰科\)](#)