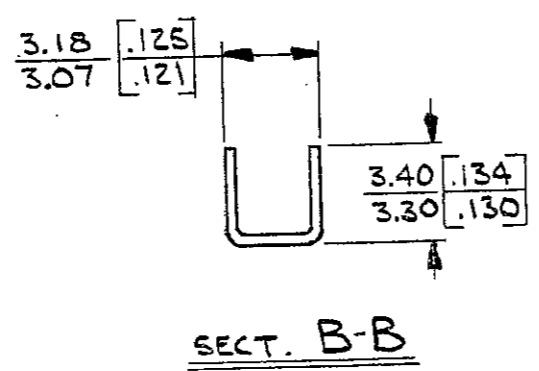
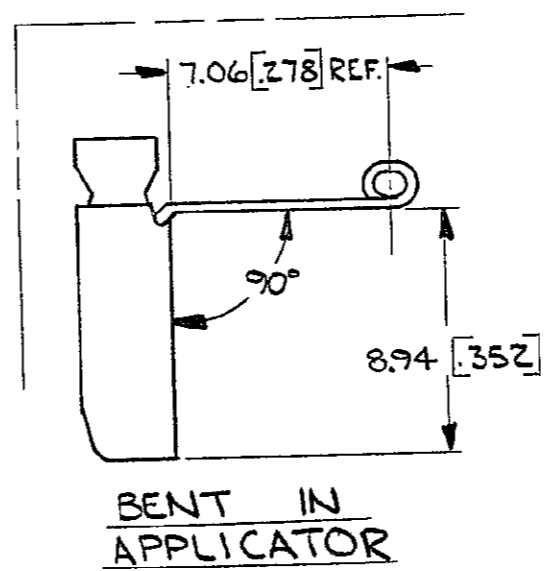
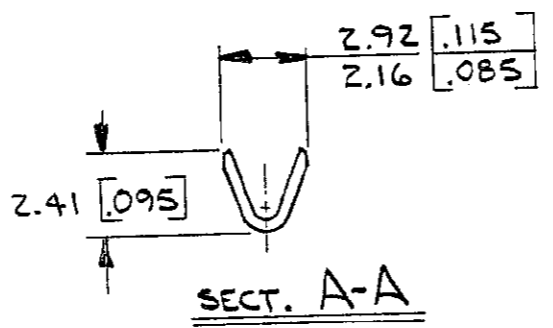
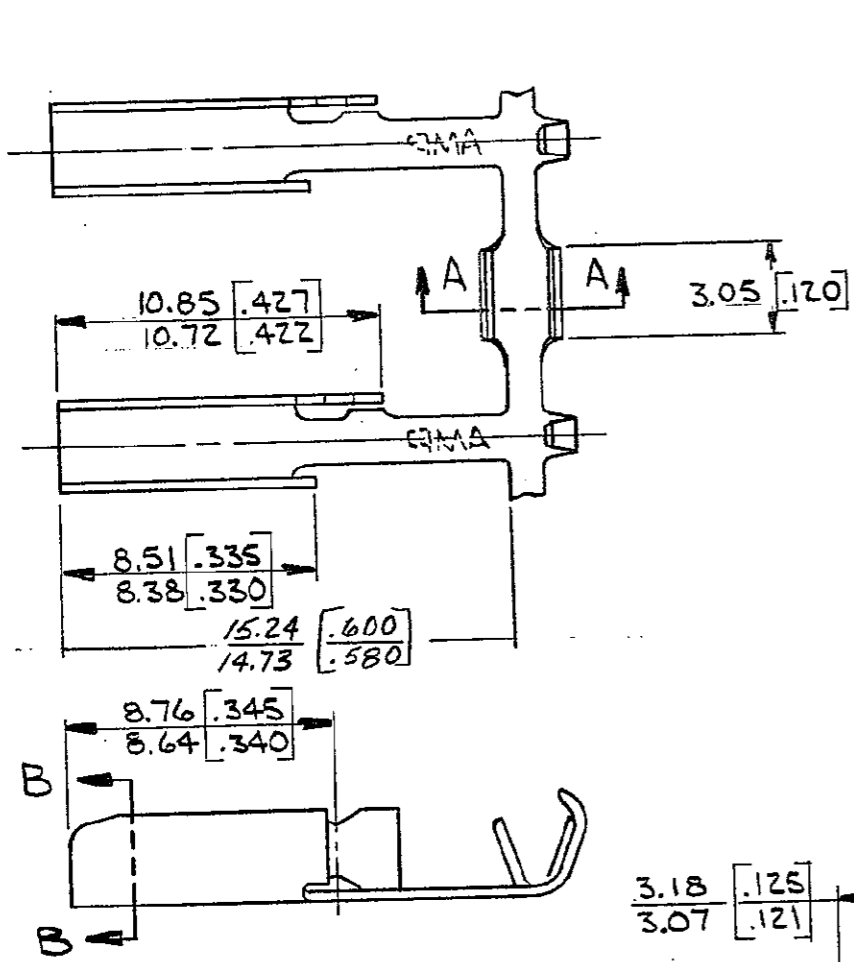


THIS DRAWING IS UNPUBLISHED. RELEASED FOR PUBLICATION, 19  
 © COPYRIGHT 19 BY AMP INCORPORATED, HARRISBURG, PA. ALL INTERNATIONAL RIGHTS RESERVED. AMP PRODUCTS MAY BE COVERED BY U.S. AND FOREIGN PATENTS AND/OR PATENTS PENDING.

REVISIONS					
REV	ZONE	LTR	DESCRIPTION	DATE	APPROVED
✓	L	A	RELEASED FOR PROG. PER P.A.R	12/21/82	SS/GV
✓	V	B	AMP STAMP AF-0537	9-25-84	RLT/GV
✓	V	C	REVISED PER 0210-0391-97	29/SEP/97	PMF



- CONTINUOUS STRIP ON REEL WITH TERMINALS LOCATED ON 10.57 [.416] CENTERS.
- 63257-2 REVERSED REEL.
- SUFFIX LETTER MUST BE USED ONLY WHEN ORDERING APPLICATOR TOOLING.

1.02-1.78 [.040-.070]	0.3-0.9 #22-18	63257-2R	LEFT HAND	63257-2
		63257-1R	RIGHT HAND	63257-1
INSUL RANGE	WIRE RANGE	TERMINAL No. BENT $\Delta$ 3	REMARKS	PART NO
UNLESS OTHERWISE SPECIFIED DIMENSIONS ARE IN INCHES. MM TOLERANCES ON: DECIMALS $\pm$ 0.25 [.010] ANGLES $\pm$		CONTRACT NO	AMP   AMP INCORPORATED Harrisburg, Pa.	
		11-4-82		
MATERIAL		CHK	CONTACT	
BRASS 0.30 THK. [.012]		11-5-82		
FINISH		APPD	NAME	
TIN		11-8-82	SIZE	
		APPD	FSCM NO	DRAWING NO
		DSGN APPD	B 00779	63257
		OTHER APPD	SCALE	SHEET
			11	

**METRIC**

**CUSTOMER DRAWING**

AF 50

单击下面可查看定价，库存，交付和生命周期等信息

[>>TE Connectivity\(泰科\)](#)