

8

7

6

5

4

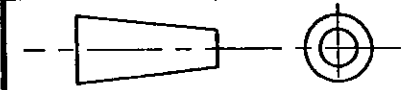
3

2

1

DO NOT SCALE

DIMENSIONS IN MM.



NOTES:

1. PARTS ARE MOISTURISED.

KEEP IN SEALED BAG UNTIL REQUIRED.
RE-SEAL BAG IF OPENED FOR ANY REASON.

C.A.D. FILE CODE
S. C344160

F

E

D

C

B

A

H

G

F

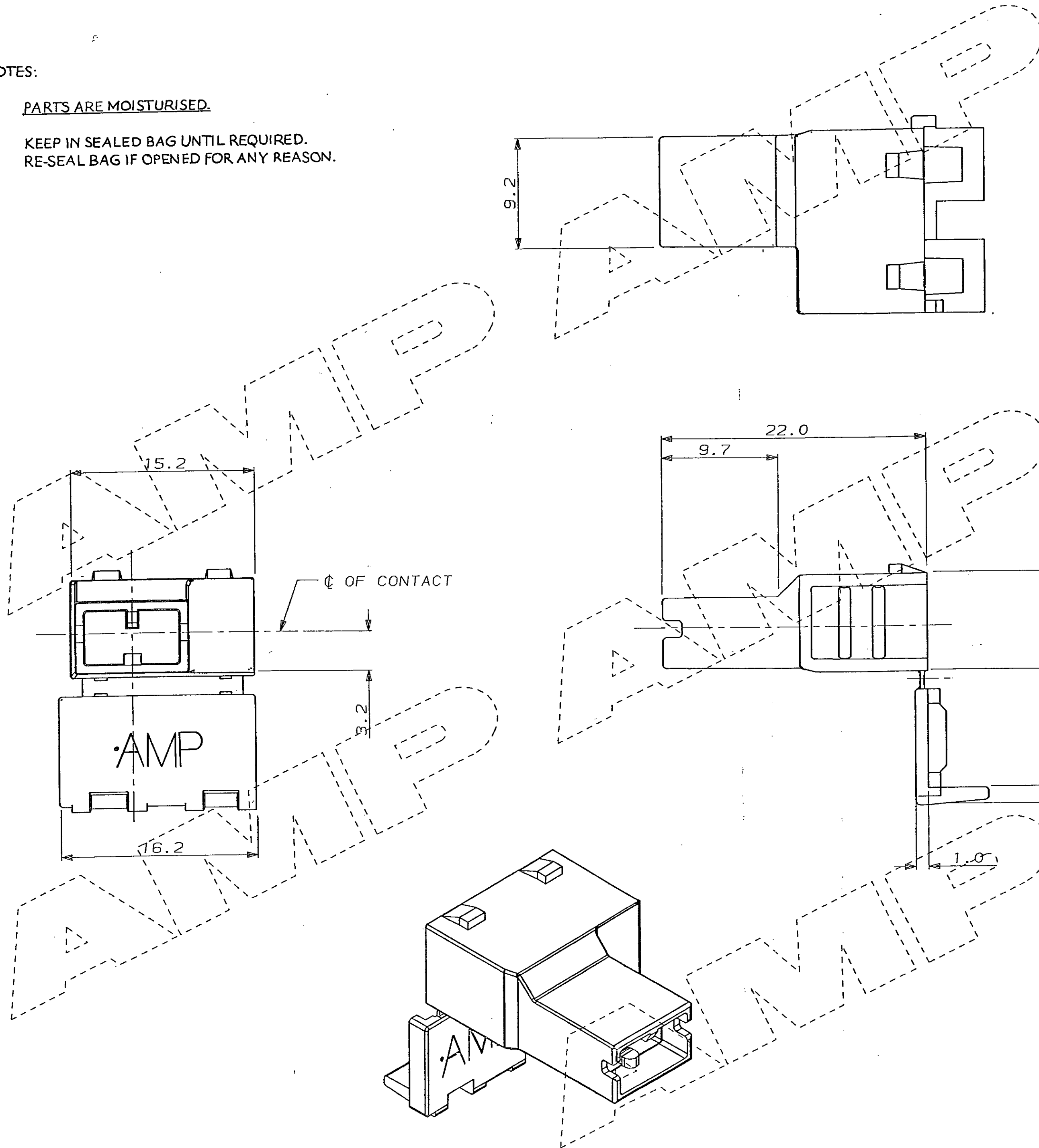
E

D

C

B

A



BLACK		NYLON		344160-1	
FINISH		MATERIAL		PART NUMBER	
CUSTOMER DWG FOR REFERENCE ONLY		THIS INFORMATION IS CONFIDENTIAL AND IS DISCLOSED TO YOU ON CONDITION THAT NO FURTHER DISCLOSURE IS MADE BY YOU TO OTHER THAN AMP PERSONNEL WITHOUT WRITTEN AUTHORIZATION FROM AMP OF GREAT BRITAIN LTD.			
TOLERANCES UNLESS OTHERWISE STATED ±		DR. MJW		12-1-88	
DEC ± 0.5		CH. DK-M		APP. ---	
ANGLES ± 1°		 TERMINAL HOUSE STANMORE MIDDX.			
B J. AMBROSE		EBOO 0103-28		NAME .250 RIGHT ANGLED POSITIVE LOCK BOOT (CLOSED TYPE)	
A M.J. HARRIS		EBOO 0387-25		SCALE LOC SIZE DWG.No.	
O M.J. MELAN		CS719 27-2-91		4/1 E A2 C344160	
REV APPROVED		ECN DATE		REV SHEET	
				B 1/1	

WAS CP87-025-D2

8

7

6

5

4

3

2

1

单击下面可查看定价，库存，交付和生命周期等信息

[>>TE Connectivity\(泰科\)](#)