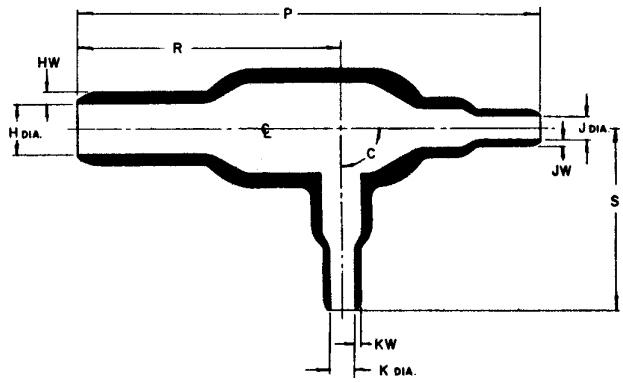


REVISIONS			
LTR	DESCRIPTION	DATE	APPROVED

PART AFTER  
UNRESTRICTED RECOVERY



NOTES:

- All dimensions are in inches.
- Dimensions appearing in table are as follows:  
a - As supplied  
b - After unrestricted recovery

TABLE OF DIMENSIONS:

PART NUMBER	H		J & K		P	R	S	HW	JW & KW	C	
	Min a	Max b	Min a	Max b	±10% b	±10% b	±10% b	±20% b	±20% b	±10° a	±5° b
322A012	.52	.29	.26	.15	2.20	1.30	.76	.06	.04	10	90
322A024	1.06	.52	.52	.26	3.82	2.12	1.52	.10	.06	10	90

If this document is printed it becomes uncontrolled.  
Check for the latest revision.

ORDERING INFORMATION:

Base part number 322A012 -12

Material dash number -12 Viton, flexible (RT-1312)

SPECIFICATION CONTROL DRAWING (LIMITED DISTRIBUTION)

DRAWN	REN 1-25-82	<b>Raychem</b>		RAYCHEM CORPORATION 300 CONSTITUTION DRIVE MENLO PARK, CALIFORNIA 94025
CHECKED		TITLE		
DSGN APPD	1/25/82	TRANSITION, 90° SIDE BREAKOUT		
MFG APPD	1/25/82	CODE IDENT.	DWG. NO.	322A012-12 and 322A024-12
QC APPD	J. SHUGART 1/25/82	NO. 0600		
MKTG APPD	1/25/82			
TSL APPD	1/25-82			
				SHEET 1 OF 1

单击下面可查看定价，库存，交付和生命周期等信息

[>>TE Connectivity\(泰科\)](#)