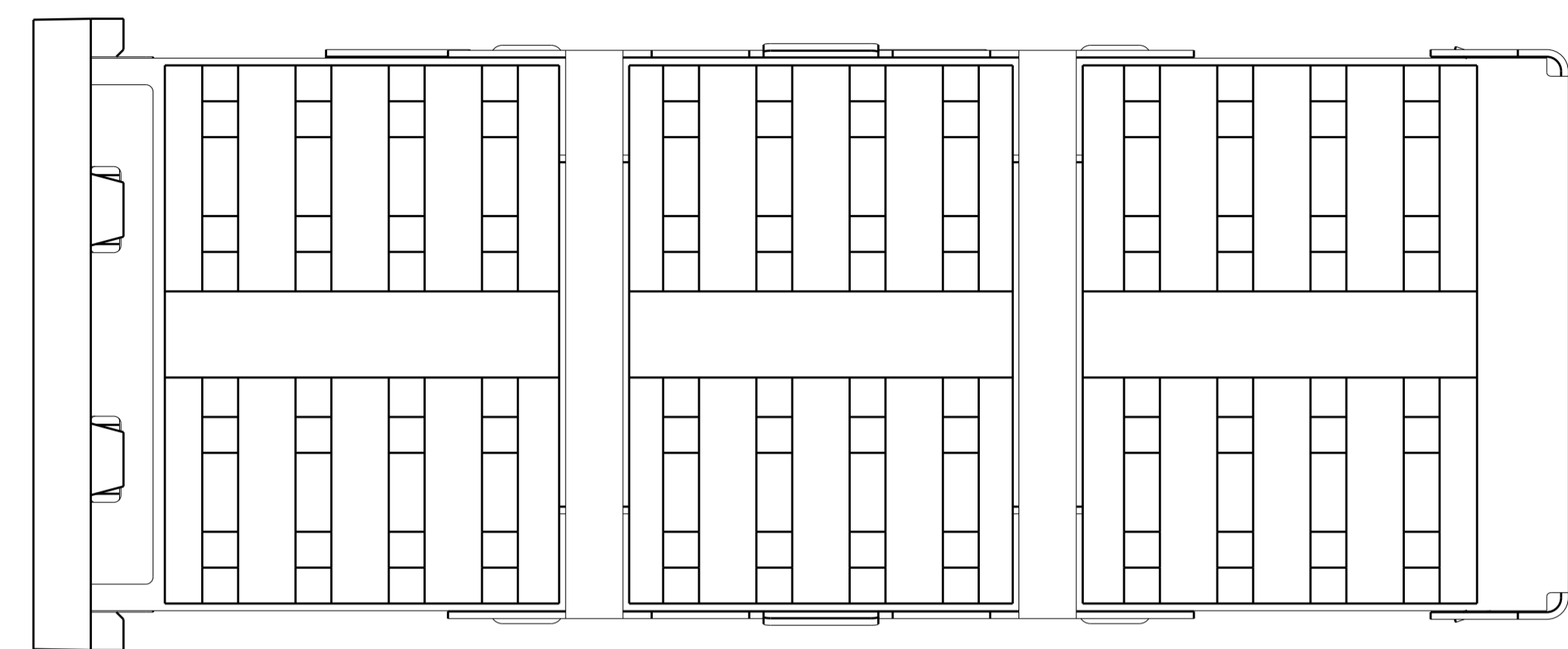
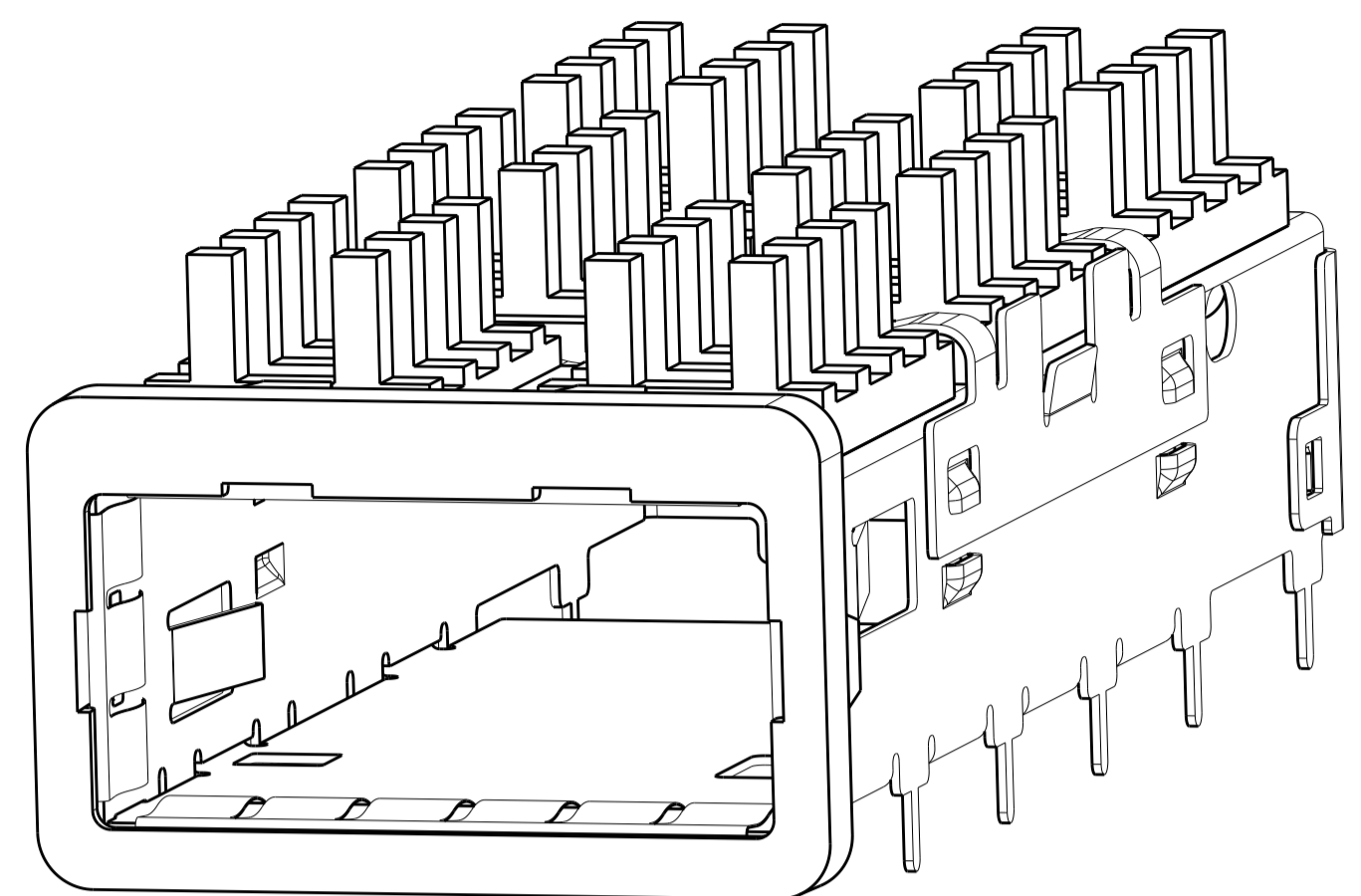
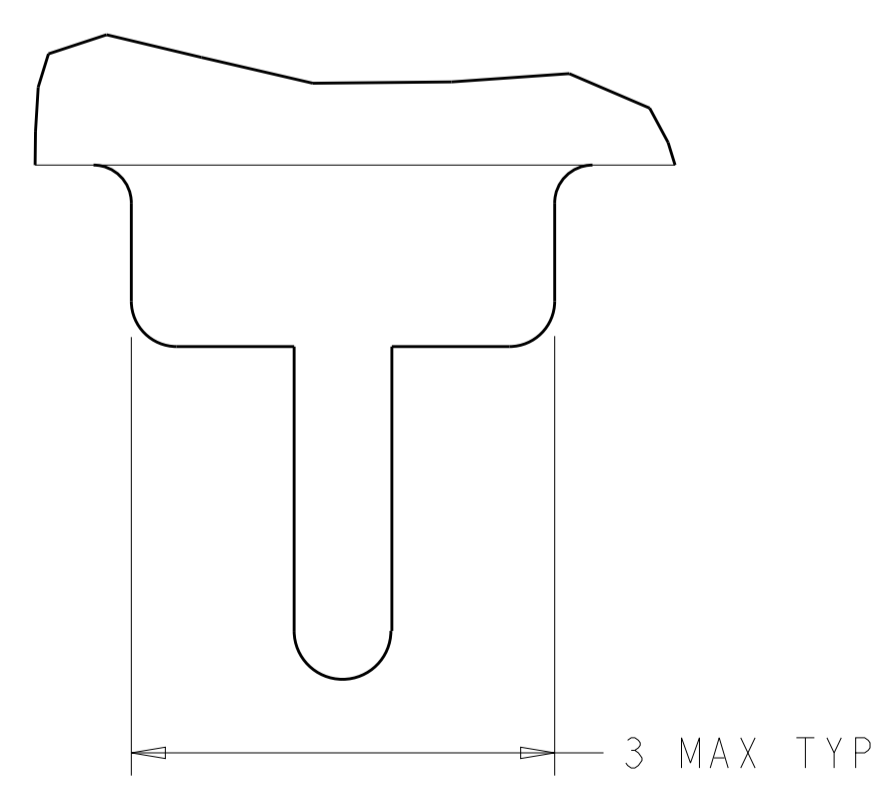
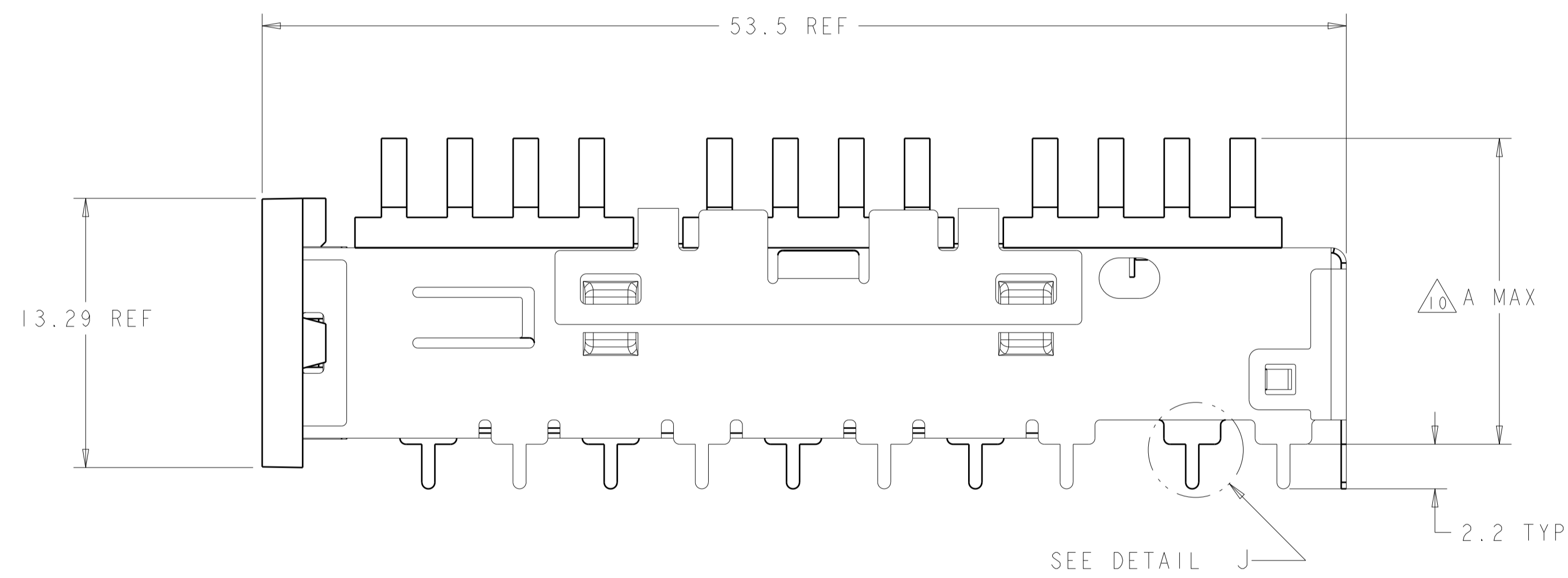
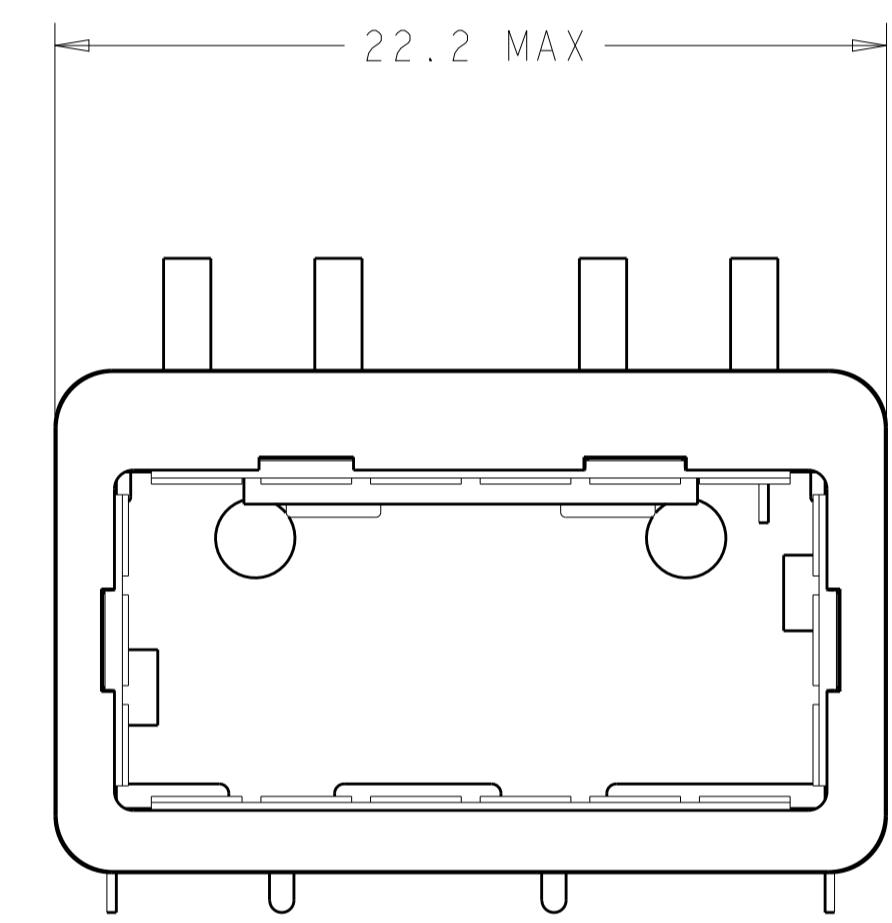


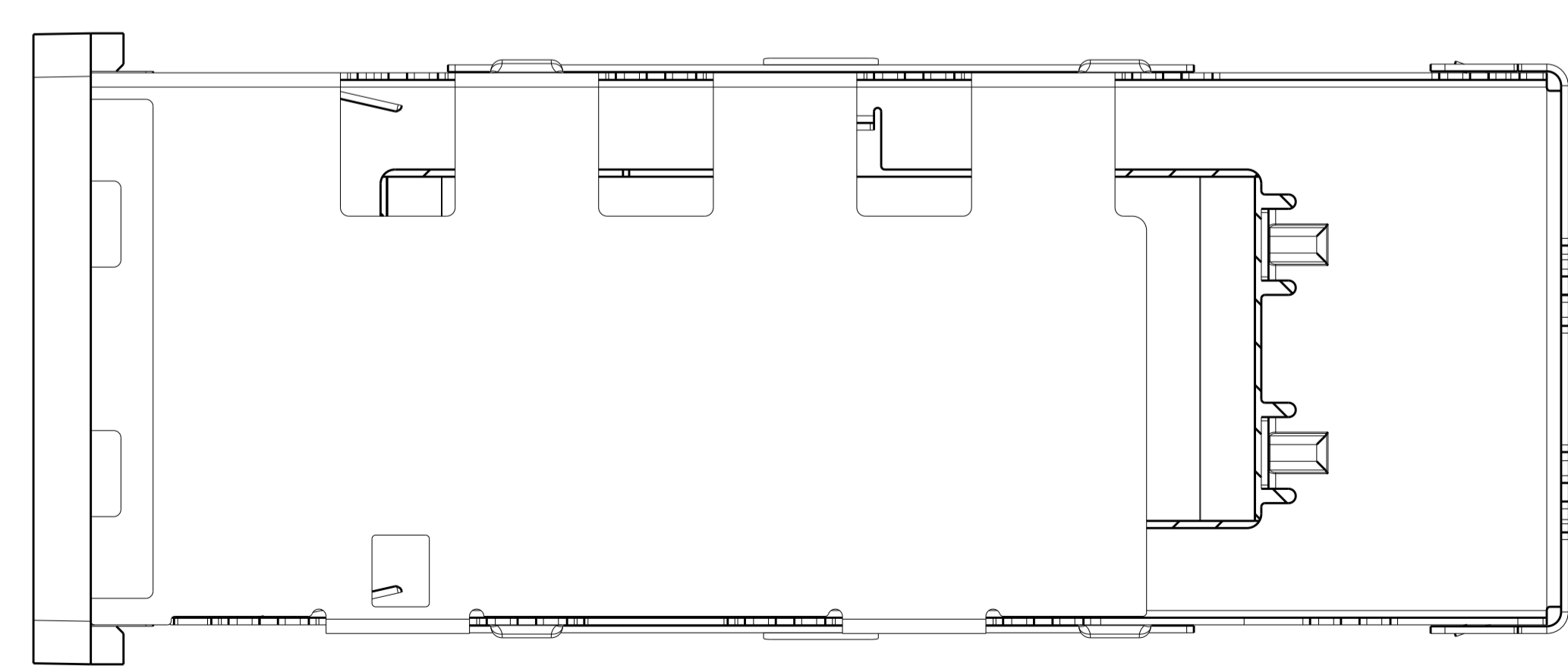
LOC	DIST	REVISIONS					
GP	00	P	LTN	DESCRIPTION	DATE	DWN	APVD
		I		PRELIMINARY	23AUG2012	DZ	JY



- ⚠ CAGE MATERIAL: NICKEL SILVER, 0.25 THICK
 HEAT SINK MATERIAL: ALUMINUM
 HEAT SINK CLIP MATERIAL: STAINLESS STEEL
 EMI SPRING MATERIAL: COPPER ALLOY
 FRONT FLANGE MATERIAL: ZINC ALLOY
- ⚠ MINIMUM PITCH DIMENSION.
- 3. MATES WITH QSFP MSA COMPATIBLE TRANSCEIVER.
- ⚠ REFERENCE APPLICATION SPEC 114-13218 FOR RECOMMENDED DRILL HOLE DIAMETER AND PLATING THICKNESS.
- ⚠ DATUMS AND BASIC DIMENSIONS ESTABLISHED BY CUSTOMER.
- ⚠ DIMENSION C IS THE NOMINAL THICKNESS OF CUSTOMER SUPPLIED PC BOARD, SINGLE SIDED PC BOARD MINIMUM THICKNESS: 1.45
- ⚠ HEAT SINK AND CLIP SHIPPED ASSEMBLED TO CAGE ASSEMBLY. CAGE ASSEMBLY MAY BE PRESSED INTO THE PCB AS SHIPPED.
- ⚠ DATUM -A- IS TOP SURFACE OF HOST BOARD.
- ⚠ SURFACE TRACES PERMITTED WITHIN THIS AREA EXCEPT WHERE CAGE STANDOFFS, SHOWN IN DETAIL J, CONTACT PC BOARD.
- ⚠ DIMENSION APPLIES WITH MODULE INSTALLED IN THE CAGE.
- ⚠ DATE CODE (YYWW) MARKED ON TOP OF CAGE AND CONCEALED BY HEAT SINK APPLIES TO CAGE ASSEMBLY ONLY.
- ⚠ EMI SPRING FINISH: 2µm MIN TIN.
 FRONT FLANGE FINISH: 3µm MIN TIN OVER 1.27µm MIN NICKEL OVER 5.08µm MIN COPPER.
 HEAT SINK FINISH: 0.076µm MIN NICKEL.
- 13. PRODUCT HAS NOT COMPLETED QUALIFICATION TESTING.

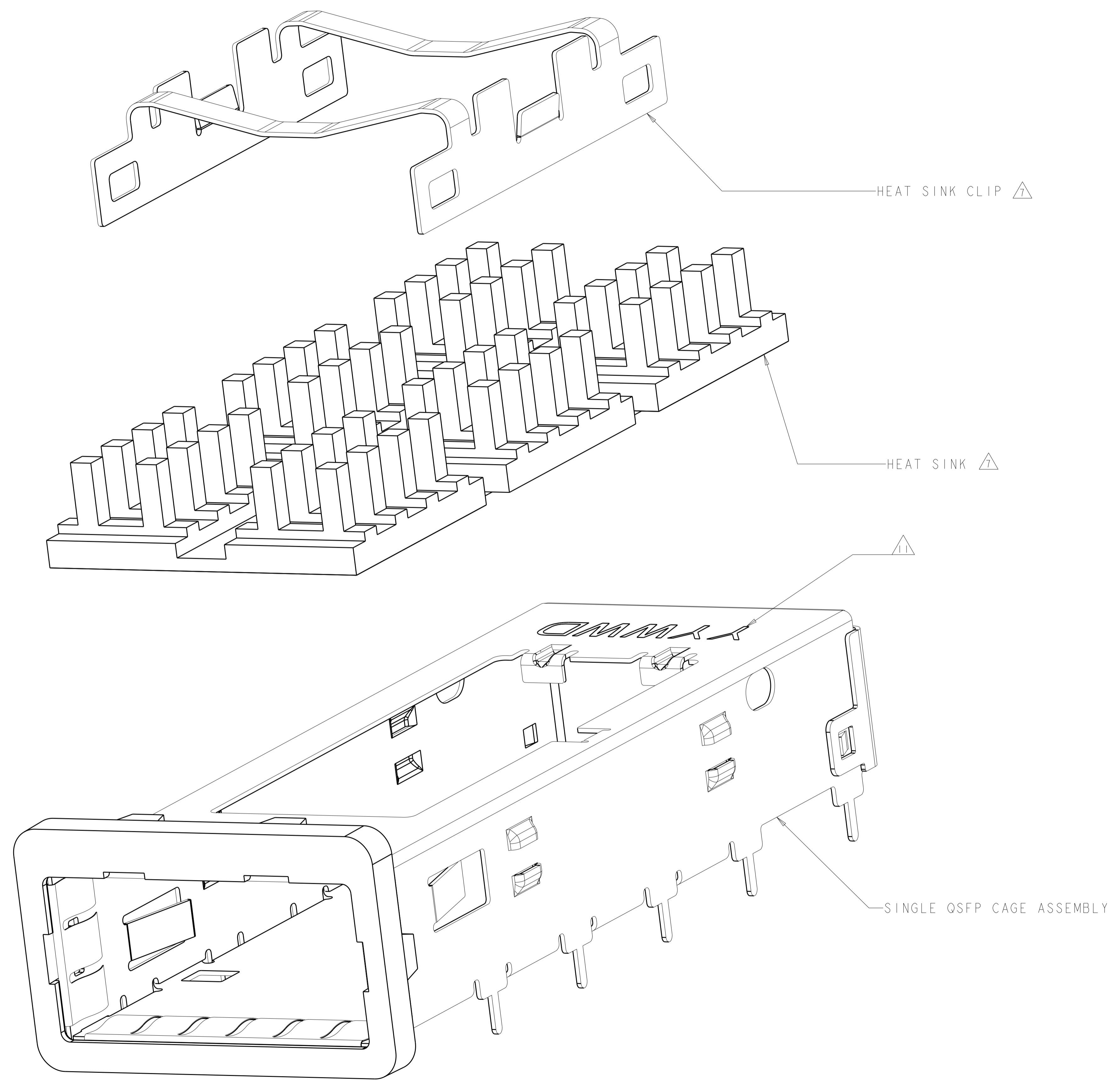


DETAIL J
 SCALE 20:1



13.7	PCI HEAT SINK	2170395-1
A	DESCRIPTION	PART NUMBER
STE TE Connectivity		
DIMENSIONS: mm TOLERANCES UNLESS OTHERWISE SPECIFIED: 0 PLC ±0.5 2 PLC ±0.13 3 PLC ±0.013 4 PLC ±0.0001 ANGLES ±0.0001		DWN: D. ZHU 23AUG2012 CHK: J. YANG 23AUG2012 APVD: A. CAI 23AUG2012 NAME: CAGE ASSEMBLY, BEHIND BEZEL, QSFP WITH HEAT SINK PRODUCT SPEC: 108-2286 APPLICATION SPEC: 114-13218 WEIGHT: - Customer Drawing
THIS DRAWING IS A CONTROLLED DOCUMENT. DESIGN APPROVED THIS PRINT IS PRELIMINARY TO FIRST PIECE APPROVAL CONTACT PRODUCT ENGINEERING BEFORE USING THIS PRINT		SIZE: A1 CAGE CODE: 00779 DRAWING NO: C=2170395 RESTRICTED TO: - SCALE: 2:1 SHEET 1 OF 4 REV 1

LOC	DIST	REVISIONS			
P	LTN	DESCRIPTION	DATE	DMN	APVD
GP	00	SEE SHEET 1	-	-	-

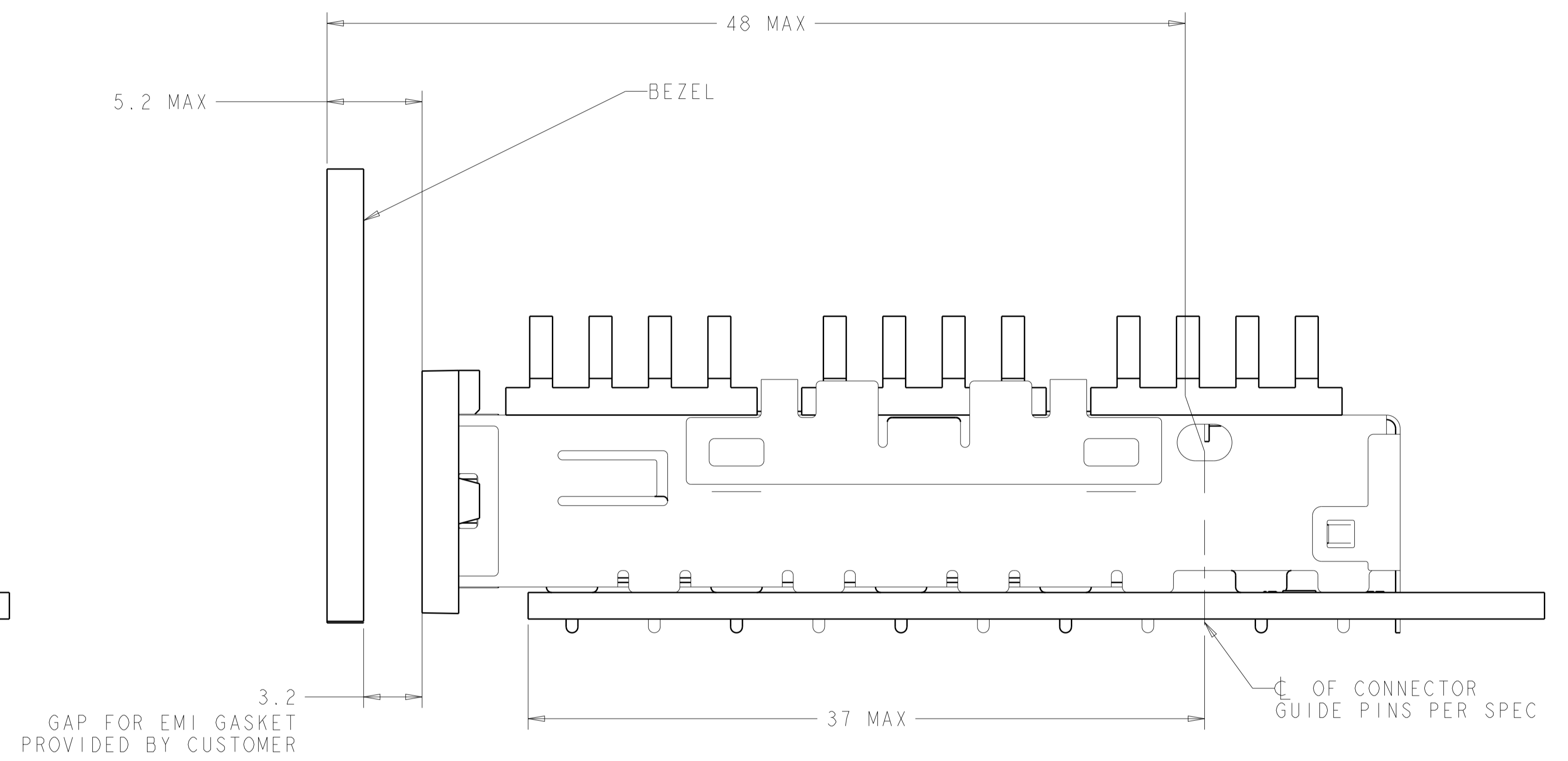
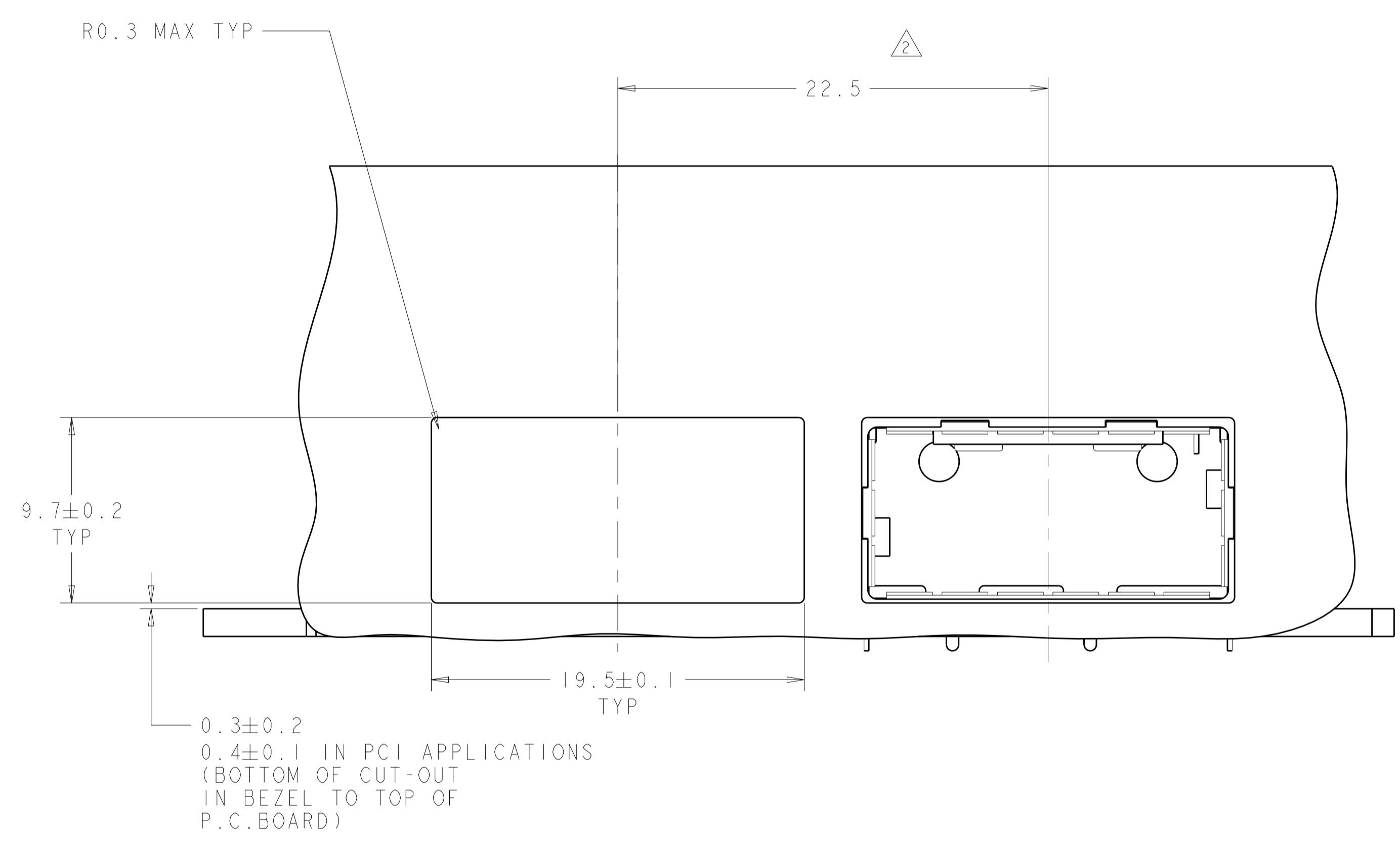


EXPLODED VIEW
SCALE 8:1

DESIGN APPROVED THIS PRINT IS
PRELIMINARY
 TO FIRST PIECE APPROVAL
 CONTACT PRODUCT ENGINEERING
 BEFORE USING THIS PRINT

THIS DRAWING IS A CONTROLLED DOCUMENT.		DMN D. ZHU	23AUG2012	TE Connectivity NAME CAGE ASSEMBLY, BEHIND BEZEL, QSPF WITH HEAT SINK PRODUCT SPEC 108-2286 APPLICATION SPEC 114-13218 WEIGHT - Customer Drawing	RESTRICTED TO						
DIMENSIONS:		CHK J. YANG	23AUG2012		SIZE	CAGE CODE	DRAWING NO				
mm		APVD A. CAI	23AUG2012		A1	00779	2170395				
0 PLC ±.5 2 PLC ±0.13 3 PLC ±0.013 4 PLC ±0.0001 ANGLES ±.1		FINISH			SCALE	2:1	SHEET	2	OF	4	REV

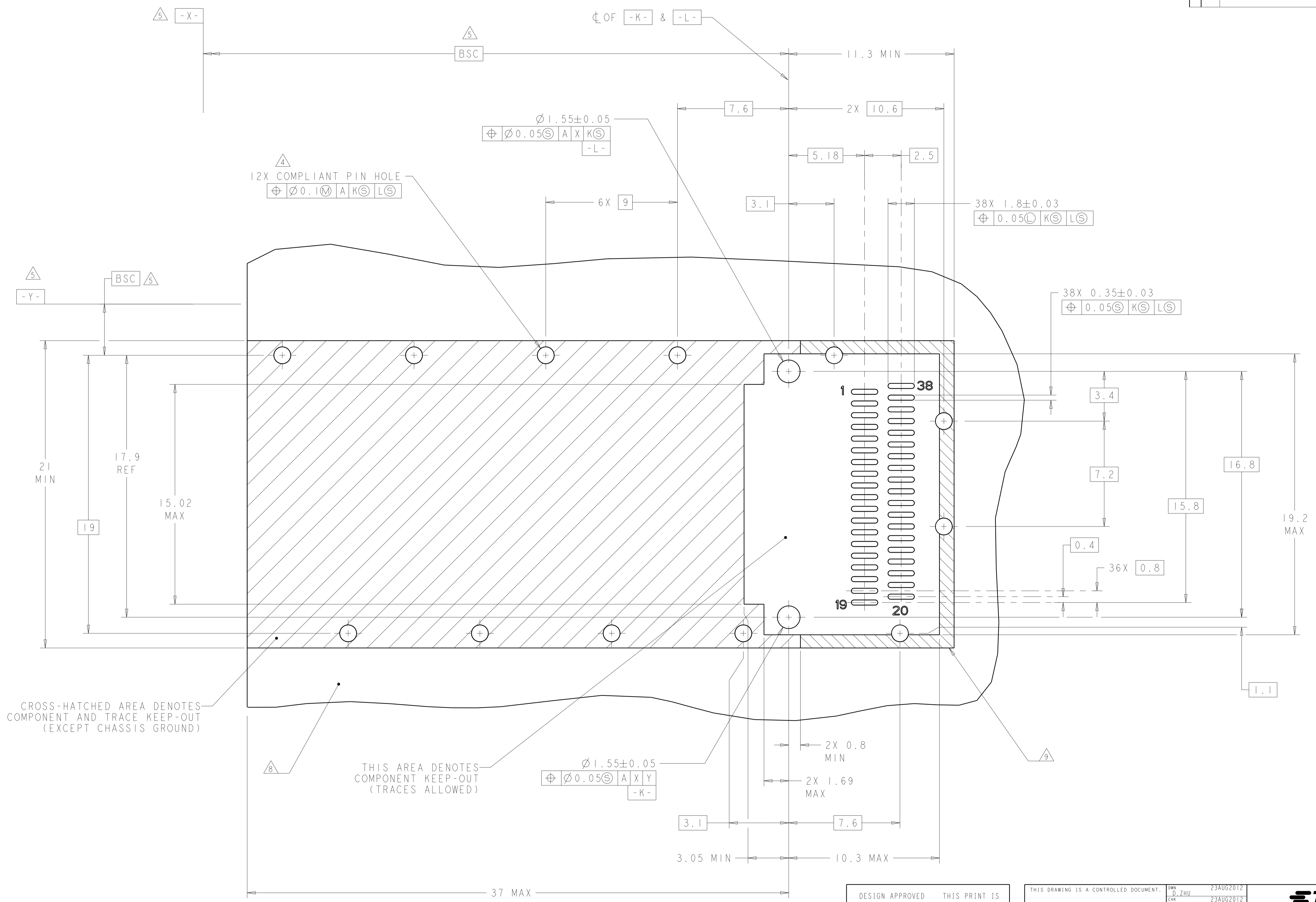
LOC	DIST	REVISIONS					
GP	00	P.	LTN	DESCRIPTION	DATE	DWN	APVD
-	-	-	-	SEE SHEET 1	-	-	-



DESIGN APPROVED THIS PRINT IS
PRELIMINARY
 TO FIRST PIECE APPROVAL
 CONTACT PRODUCT ENGINEERING
 BEFORE USING THIS PRINT

THIS DRAWING IS A CONTROLLED DOCUMENT.		DWN D. ZHU	23AUG2012		TE Connectivity
DIMENSIONS:		CHK J. YANG	23AUG2012		NAME CAGE ASSEMBLY, BEHIND BEZEL, QSFP, WITH HEAT SINK
TOLERANCES UNLESS OTHERWISE SPECIFIED:		APVD A. CAI	23AUG2012	SIZE A1	
mm	0 PLC ±0.5	PRODUCT SPEC		DRAWING NO	RESTRICTED TO
	1 PLC ±0.5	APPLICATION SPEC		114-13218	
	2 PLC ±0.13	WEIGHT		A100779	C=2170395
	3 PLC ±0.013	MATERIAL		Customer Drawing	SCALE 2:1
	4 PLC ±0.0001	FINISH			SHEET 3 OF 4
	ANGLES ±0.0001				REV 1

LOC	DIST	REVISIONS			
		REV	DATE	BY	APPV
GP	00	-	SEE SHEET 1	-	-



CROSS-HATCHED AREA DENOTES COMPONENT AND TRACE KEEP-OUT (EXCEPT CHASSIS GROUND)

THIS AREA DENOTES COMPONENT KEEP-OUT (TRACES ALLOWED)

Ø1.55±0.05
 Ø0.05
 A X Y
 -K-

RECOMMENDED PCB LAYOUT
 SINGLE SIDED CONFIGURATION
 SCALE 8:1

DESIGN APPROVED THIS PRINT IS
PRELIMINARY
 TO FIRST PIECE APPROVAL
 CONTACT PRODUCT ENGINEERING
 BEFORE USING THIS PRINT

THIS DRAWING IS A CONTROLLED DOCUMENT.		DWN: D. ZHU 23AUG2012	TE Connectivity
DIMENSIONS: mm		CHK: J. YANG 23AUG2012	
TOLERANCES UNLESS OTHERWISE SPECIFIED:		APPV: A. CAI 23AUG2012	NAME: CAGE ASSEMBLY, BEHIND BEZEL, QSFP WITH HEAT SINK
0 PLC ±0.5	1 PLC ±0.13	PRODUCT SPEC 108-2286	SIZE: A1
3 PLC ±0.013	4 PLC ±0.001	APPLICATION SPEC 114-13218	CAGE CODE: 2170395
ANGLES ±0.001	FINISH	WEIGHT	RESTRICTED TO
MATERIAL		Customer Drawing	SCALE: 2:1 SHEET 4 OF 4 REV 1

单击下面可查看定价，库存，交付和生命周期等信息

[>>TE Connectivity\(泰科\)](#)