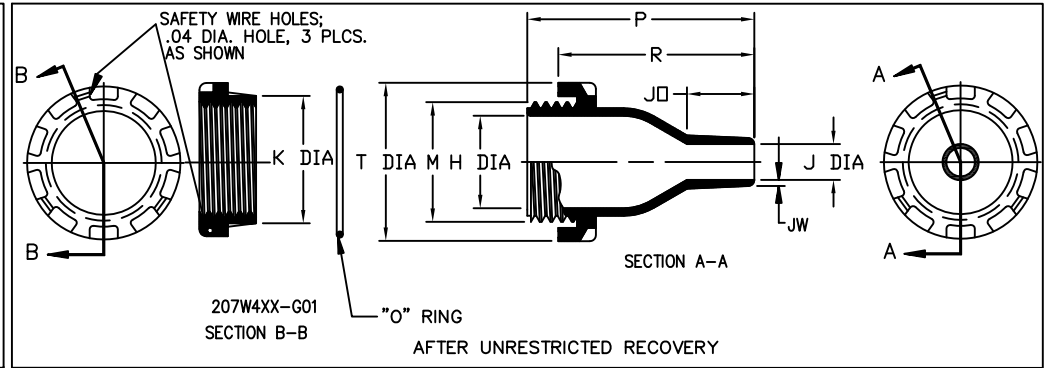
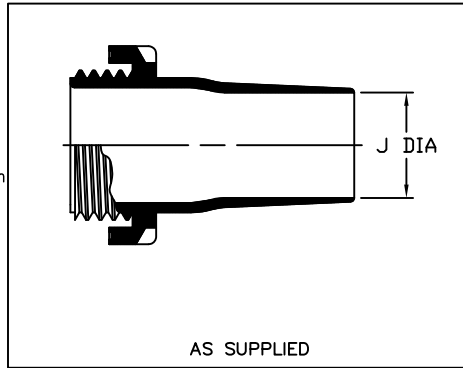


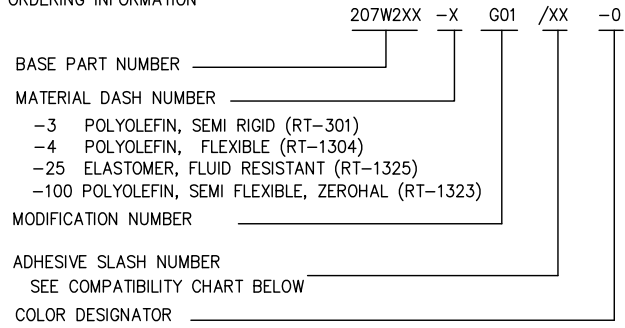
**NOTES**

- ALL DIMENSIONS ARE IN  $\frac{\text{INCHES}}{\text{[MILLIMETERS]}}$
- DIMENSIONS APPEARING IN TABLE ARE AS FOLLOWS:
  - a - AS SUPPLIED
  - b - AFTER UNRESTRICTED RECOVERY
- COATING IS OPTIONAL. AS SUPPLIED DIMENSIONS APPEARING IN TABLE ARE FOR UNCOATED PARTS WHEN COATING IS ADDED, ENTRY DIAMETERS WILL BE REDUCED BY 0.06 MAX.
- RECOMENDED MAXIMUM PANEL THICKNESS IS 10mm



DIMENSIONING AND TOLERANCING PER ASME Y14.5M (ISO STANDARDS)		
REVISIONS		
LTR	DESCRIPTION	DATE
J	RELEASE PER ECO-12-010853	06/11/2012

**ORDERING INFORMATION**



**TABLE OF DIMENSIONS**

PART NUMBER	H		J		J0	K	M	P	R	U	T	JW	Hole DIA	Torque Nm
	Ref	Min	Max	Max	Ref	THREAD	$\pm 10\%$	$\pm 10\%$	$\pm 10\%$	Ref	$\pm 20\%$	$\pm 20\%$	$\pm 0.02$ $\pm 0.5$	
207W213-G01	.47 [12,0]	.39 [10,0]	.15 [4,0]	.60 [15,3]	.90 [23,0]	.78 [20,0]	2.44 [62,0]	1.93 [49,0]	.39 [10,0]	1.25 [32,0]	.04 [1,0]	.94 [24,0]	3	
207W223-G01	.78 [20,0]	.71 [18,0]	.27 [7,0]	.76 [19,5]	1.30 [33,0]	1.18 [30,0]	2.83 [72,0]	2.32 [59,0]	.39 [10,0]	1.65 [42,0]	.07 [1,8]	1.33 [34,0]	8	
207W234-G01	1.22 [31,0]	1.10 [28,0]	.47 [12,0]	1.06 [27,0]	1.81 [46,0]	1.65 [42,0]	3.42 [87,0]	2.91 [74,0]	.39 [10,0]	2.28 [58,0]	.10 [2,5]	1.85 [47,0]	11	
207W245-G01	1.77 [45,0]	1.65 [42,0]	.71 [18,0]	1.26 [32,2]	2.34 [59,5]	2.20 [56,0]	4.01 [102,0]	3.50 [89,0]	.39 [10,0]	2.79 [71,0]	.12 [3,0]	2.38 [60,5]	14	
207W258-G01	2.67 [68,0]	2.52 [64,0]	1.18 [30,0]	1.53 [39,0]	3.30 [84,0]	3.15 [80,0]	4.80 [122,0]	4.29 [109,0]	.39 [10,0]	3.82 [97,0]	.12 [3,0]	3.34 [85,0]	16	
207W264-G01	1.57 [40,0]	1.49 [38,0]	.59 [15,0]	1.11 [28,3]	2.12 [54,0]	1.97 [50,0]	3.74 [95,0]	3.22 [82,0]	.39 [10,0]	2.62 [66,5]	.10 [2,5]	2.16 [55,0]	11	

Raychem Molded Parts  
**CUSTOMER DRAWING**

If this document is printed it becomes uncontrolled. Check for the latest revision

COMPATIBILITY CHART			
MATERIAL DASH NO.	ADHESIVE (COATING) SLASH NUMBER	ADHESIVE (COATING) S NUMBER	
-3	/42; /86;		
-4	/42; /86;		
-25	/86; /225	S-1206	
-100	/86; /180	S-1206	

THIS DRAWING AND THE INFORMATION SET FORTH HEREON ARE THE PROPERTY OF TYCO ELECTRONICS CORPORATION, AND ARE TO BE HELD IN TRUST AND CONFIDENCE. PUBLICATION, DUPLICATION, DISCLOSURE OR USE FOR ANY PURPOSE NOT EXPRESSLY AUTHORIZED IN WRITING BY TYCO ELECTRONICS CORPORATION IS PROHIBITED.

UNLESS OTHERWISE SPECIFIED DIMENSIONS ARE METRIC AND INCHES ARE IN BRACKETS. DECIMAL TOLERANCES xxx $\pm$ 0.13 (.005) xx $\pm$ 0.25 (.01) x $\pm$ 0.50 (.10) ANGLE TOLERANCE .x $\pm$ 1 DEG.	DRAWN <b>M. Mazariegos</b> 5/28/12	APPROVED <b>D. Hurrell</b> 5/30/12	 TE Connectivity
	RPN	TITLE <b>FEEDTHROUGH SEAL</b>	
TYCO ELECTRONICS RESERVES THE RIGHT TO AMEND THIS DRAWING AT ANY TIME. USERS SHOULD EVALUATE THE SUITABILITY OF THE PRODUCT FOR THEIR APPLICATION.	CAD FILE: <b>207W213THRU264-X-G01</b> _CD	THIRD ANGLE PROJECTION	SIZE <b>B</b> CODE IDENT. NO. <b>06090</b> DWG. NO. <b>207W213THRU264-X-G01</b>

© 2011-2012 Tyco Electronics Corporation. All rights reserved.    DO NOT SCALE THIS DRAWING    SHEET 1 OF 1

单击下面可查看定价，库存，交付和生命周期等信息

[>>TE Connectivity\(泰科\)](#)