

4

3

2

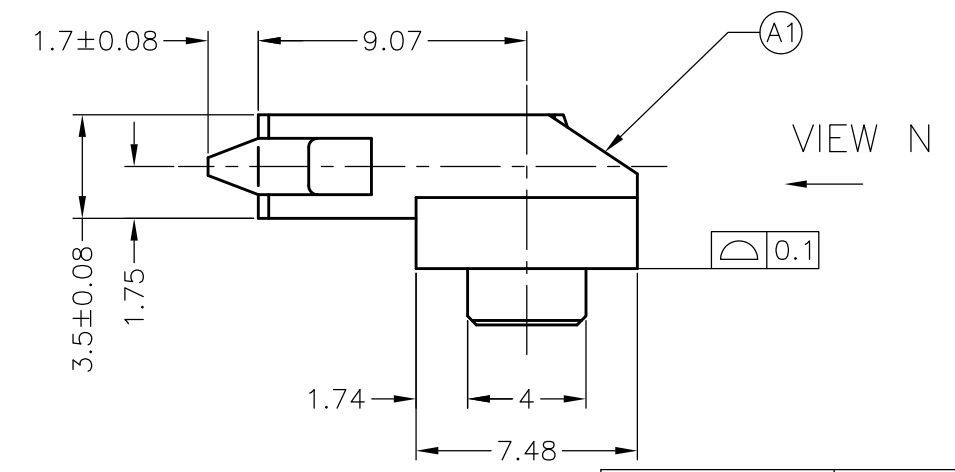
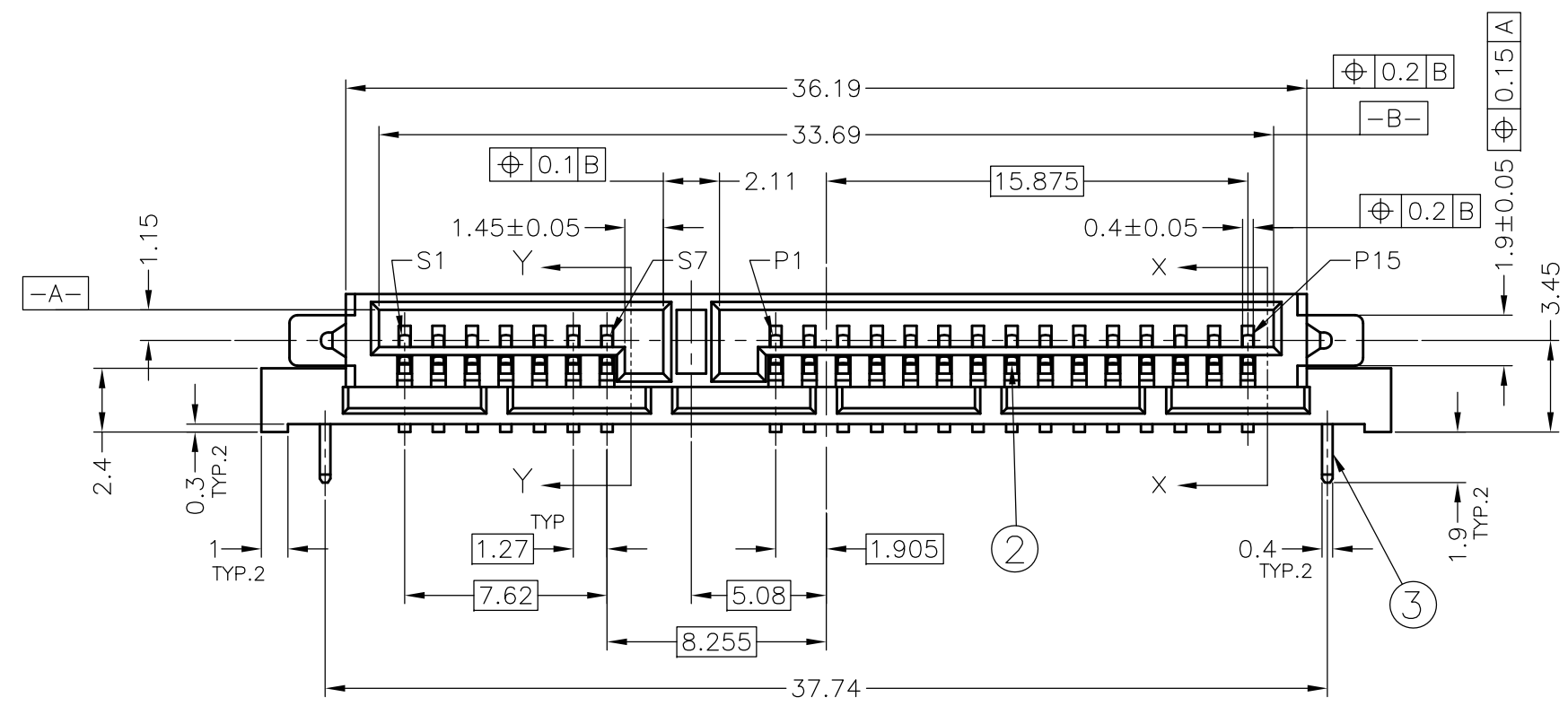
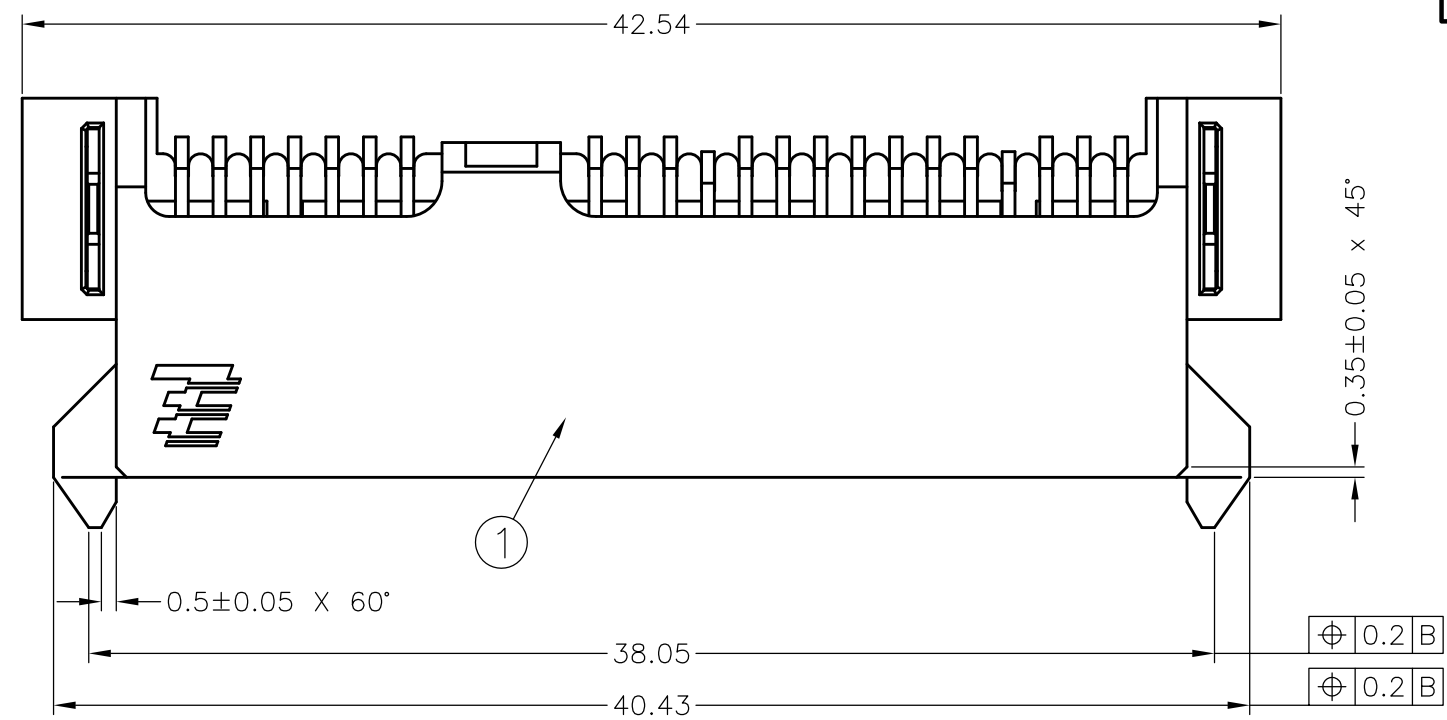
1

THIS DRAWING IS UNPUBLISHED. RELEASED FOR PUBLICATION
 © COPYRIGHT BY TYCO ELECTRONICS CORPORATION. ALL RIGHTS RESERVED.

| LOC | DIST | REVISIONS | | | |
|-----|------|-------------|-------------------------|-----------|----------|
| P | LTR | DESCRIPTION | DATE | DWN | APVD |
| DW | | A1 | REVISED (ECR-10-004449) | 23FEB2010 | V.P. H.K |

2023246-1~-3: AS SHOWN

1. MATERIAL:
 ① HOUSING: HIGH TEMPERATURE THERMOPLASTIC
 UL94V-0, COLOR:BLACK
 ② CONTACT: COPPER ALLOY
 ③ SOLDER LEG: COPPER ALLOY
2. FINISH:
 CONTACT: (SEE TABLE) GOLD PLATED ON CONTACT AREA,
 2.54μm MIN. MATTE-TIN PLATING ON SOLDER TAILS.
 1.27μm MIN. NICKEL UNDER PLATING OVER ALL.
 SOLDER LEG: 2.54μm MIN. MATTE-TIN PLATED
 1.27μm MIN. NICKET PLATED.



| | |
|-------------|-------------------|
| 2023246-3 | 0.76μm |
| 2023246-2 | 0.30μm |
| 2023246-1 | 0.05μm |
| PART NUMBER | CONTACT Au PLATED |

| | | | | | |
|---|--|------------------|-----------|---|--|
| THIS DRAWING IS A CONTROLLED DOCUMENT. | | DWN | V.PENG | 14NOV2008 | Tyco Electronics Corporation Taipei, Taiwan |
| DIMENSIONS: mm | | CHK | H.KODAMA | 14NOV2008 | |
| TOLERANCES UNLESS OTHERWISE SPECIFIED: | | APVD | H.KODAMA | 14NOV2008 | |
| 8 PLC ± 1 PLC ± ±0.25 2 PLC ± ±3° 3 PLC ± ± 4 PLC ± ± ANGLES ± ± | | PRODUCT SPEC | 108-99017 | | |
| MATERIAL | | APPLICATION SPEC | | NAME | |
| FINISH | | WEIGHT | | SATA RECEPTACLE R/A SMT TYPE, 3.45MM | |
| | | CUSTOMER DRAWING | | RESTRICTED TO | |
| | | 2.1 gm | | SIZE | |
| | | A3 | | CAGE CODE | |
| | | 00779 | | DRAWING NO | |
| | | G-2023246 | | SHEET | |
| | | SCALE | | 1 OF 4 | |
| | | 4:1 | | REV | |
| | | | | A1 | |

4

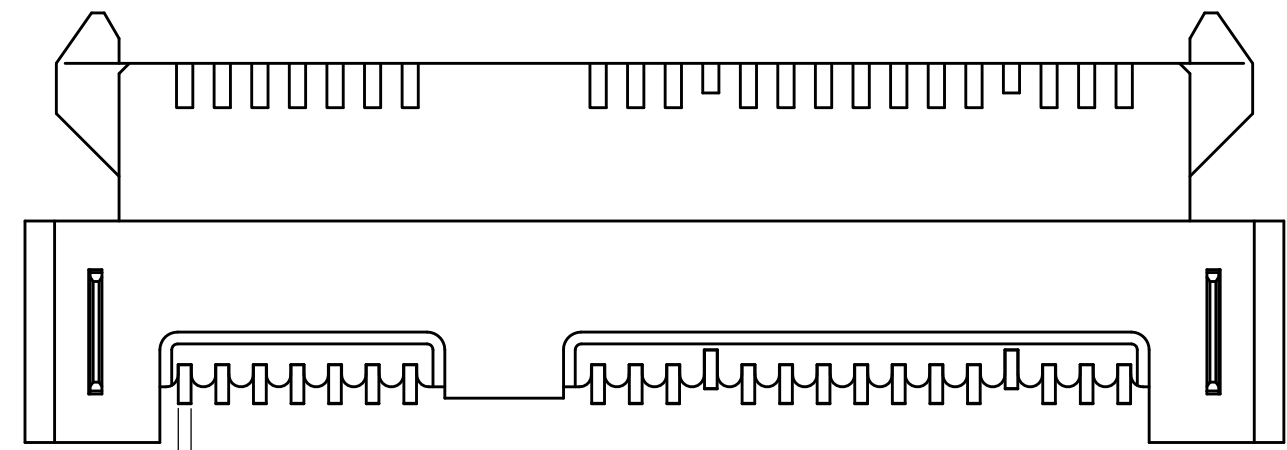
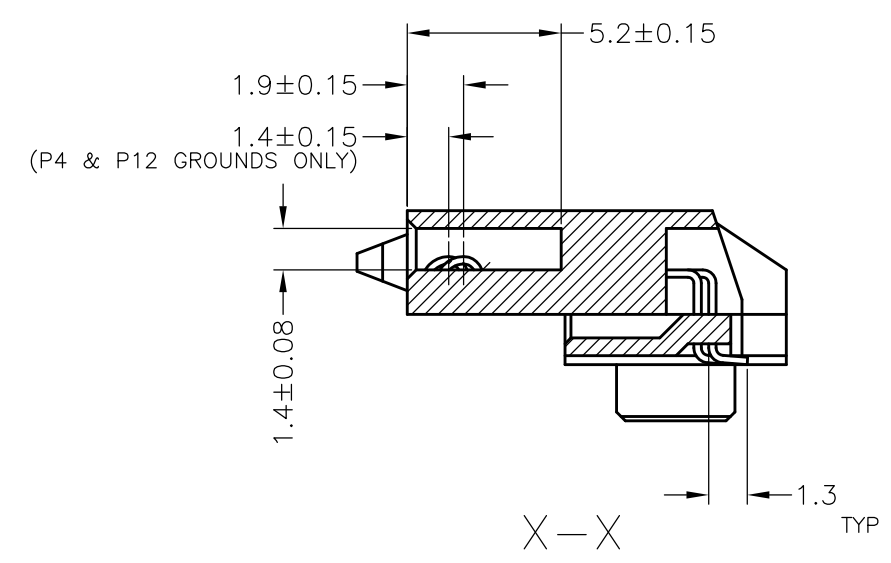
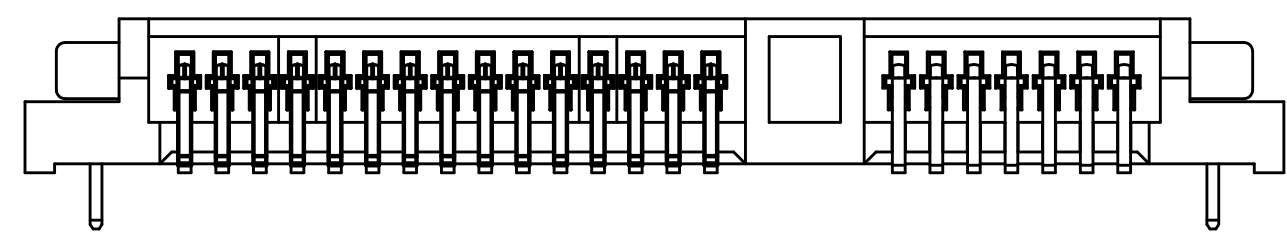
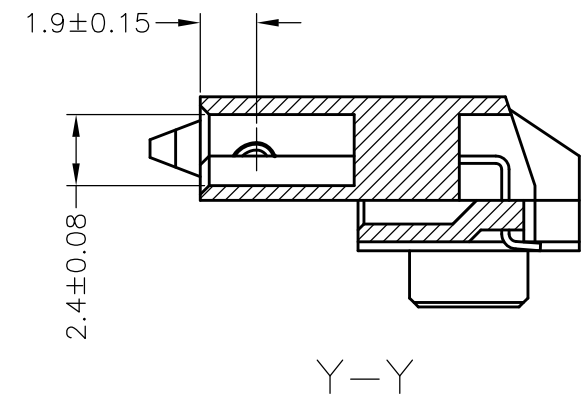
3

2

1

THIS DRAWING IS UNPUBLISHED. RELEASED FOR PUBLICATION
 © COPYRIGHT BY TYCO ELECTRONICS CORPORATION. ALL RIGHTS RESERVED.

| LOC | DIST | REVISIONS | | | |
|-----|------|-------------|------|-----|------|
| P | LTR | DESCRIPTION | DATE | DWN | APVD |
| | | SEE SHEET 1 | | | |



| | | | | |
|---|--|------------------|--|-----------|
| THIS DRAWING IS A CONTROLLED DOCUMENT. | | DWN | Tyco Electronics Corporation Taipei, Taiwan | |
| DIMENSIONS: mm | | CHK | NAME | |
| TOLERANCES UNLESS OTHERWISE SPECIFIED: | | APVD | SATA RECEPTACLE R/A SMT TYPE, 3.45MM | |
| <ul style="list-style-type: none"> 8 PLC ± 1 PLC ± ±0.25 2 PLC ± ±3° 3 PLC ± 4 PLC ± ANGLES ± | | PRODUCT SPEC | SIZE | CAGE CODE |
| MATERIAL | | APPLICATION SPEC | A3 | 00779 |
| FINISH | | WEIGHT | DRAWING NO. 2023246 | |
| | | CUSTOMER DRAWING | RESTRICTED TO | |
| | | SCALE 4:1 | SHEET 2 OF 4 | REV A1 |

4

3

2

1

THIS DRAWING IS UNPUBLISHED.

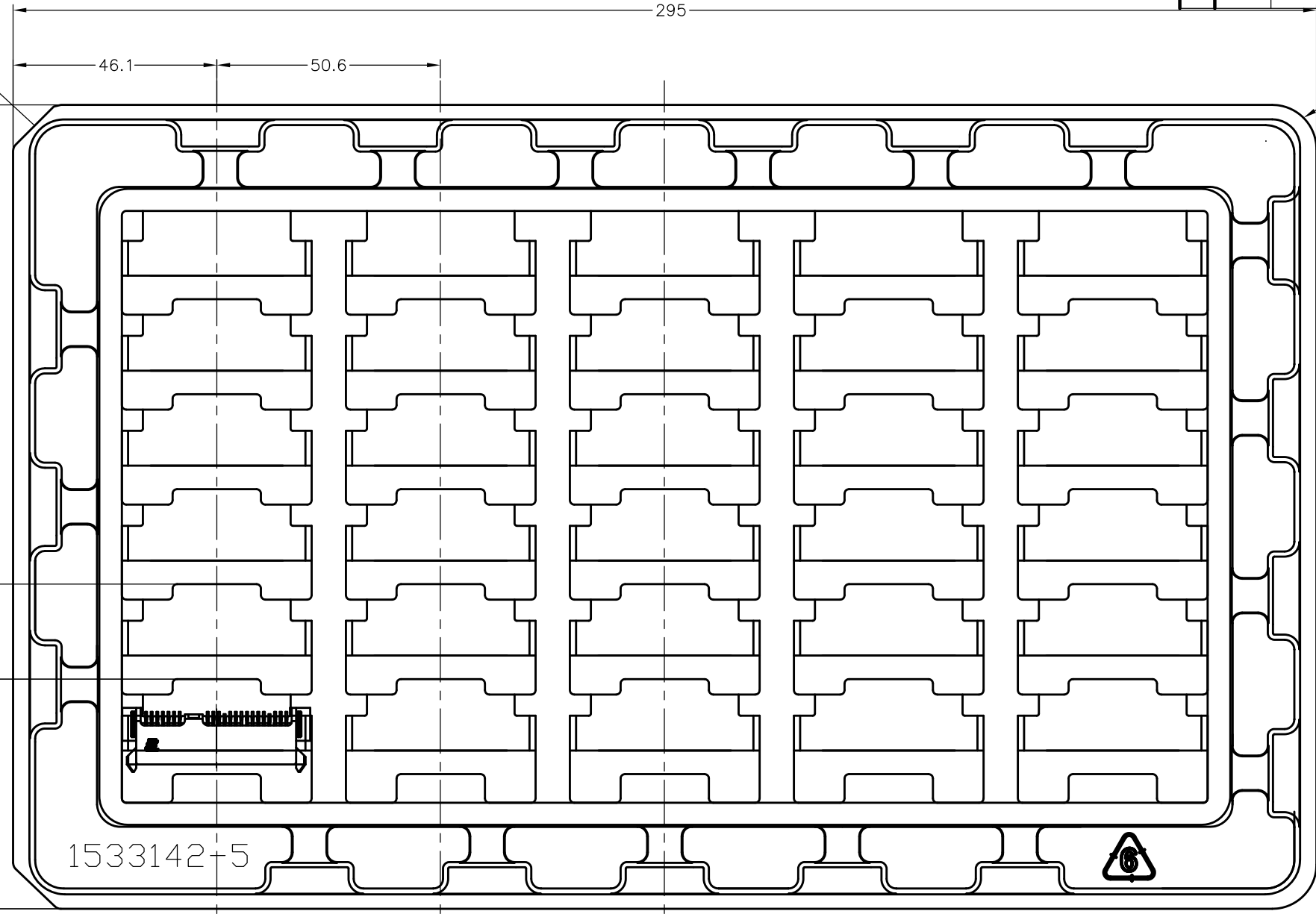
RELEASED FOR PUBLICATION

© COPYRIGHT BY TYCO ELECTRONICS CORPORATION. ALL RIGHTS RESERVED.

| | | | | | | | |
|-----------|------|-------------|------|-----|------|-----|------|
| LOC DW | DIST | REVISIONS | | | DATE | DWN | APVD |
| P | LTR | DESCRIPTION | DATE | DWN | APVD | | |
| | | SEE SHEET 1 | - | - | - | | |

D

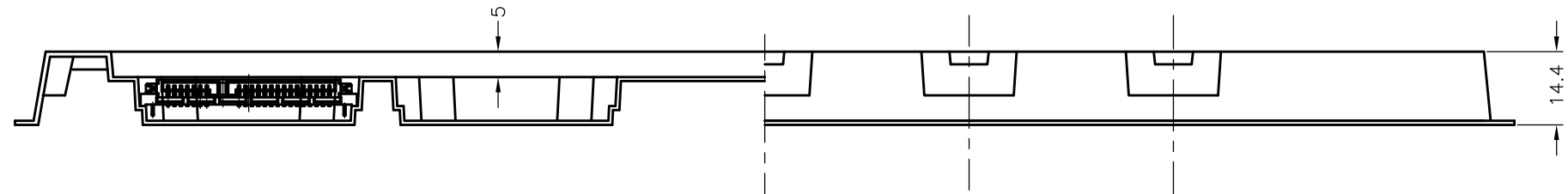
10.0X45°



2XR10

C

B



A

3. QUANTITY: 30 PCS/PER TRAY

| | | | | |
|--|--|------------------|--|---------------|
| THIS DRAWING IS A CONTROLLED DOCUMENT. | | DWN | Tyco Electronics Corporation Taipei, Taiwan | |
| DIMENSIONS: mm | | CHK | NAME | |
| TOLERANCES UNLESS OTHERWISE SPECIFIED: | | APVD | SATA RECEPTACLE R/A SMT TYPE, 3.45MM | |
| <ul style="list-style-type: none"> 0 PLC ± 1 PLC ±- 2 PLC ±- 3 PLC ±- 4 PLC ±- ANGLES ±- | | PRODUCT SPEC | SIZE | CAGE CODE |
| MATERIAL | | APPLICATION SPEC | A3 | 00779 |
| FINISH | | WEIGHT | DRAWING NO | RESTRICTED TO |
| | | CUSTOMER DRAWING | C-2023246 | |
| | | SCALE | SHEET | REV |
| | | 4:1 | 4 OF 4 | A1 |

单击下面可查看定价，库存，交付和生命周期等信息

[>>TE Connectivity\(泰科\)](#)