

THIS DRAWING IS UNPUBLISHED. RELEASED FOR PUBLICATION
 © COPYRIGHT BY TYCO ELECTRONICS CORPORATION. ALL RIGHTS RESERVED.

| | | | | |
|-----------|------------|-------------|---------|------------|
| LOC GP | DIST 00 | REVISIONS | | |
| P | LTR | DESCRIPTION | DATE | DWN |
| | A | NEW RELEASE | 25APR07 | RG |
| | | | | APVD DO |

1. PART NUMBER CHANGES AND/OR DESIGN CHANGES AFFECTING ITEM INTERCHANGEABILITY REQUIRE PRIOR TYCO APPROVAL AND AUTHORIZATION BY REVISION TO THIS DRAWING.

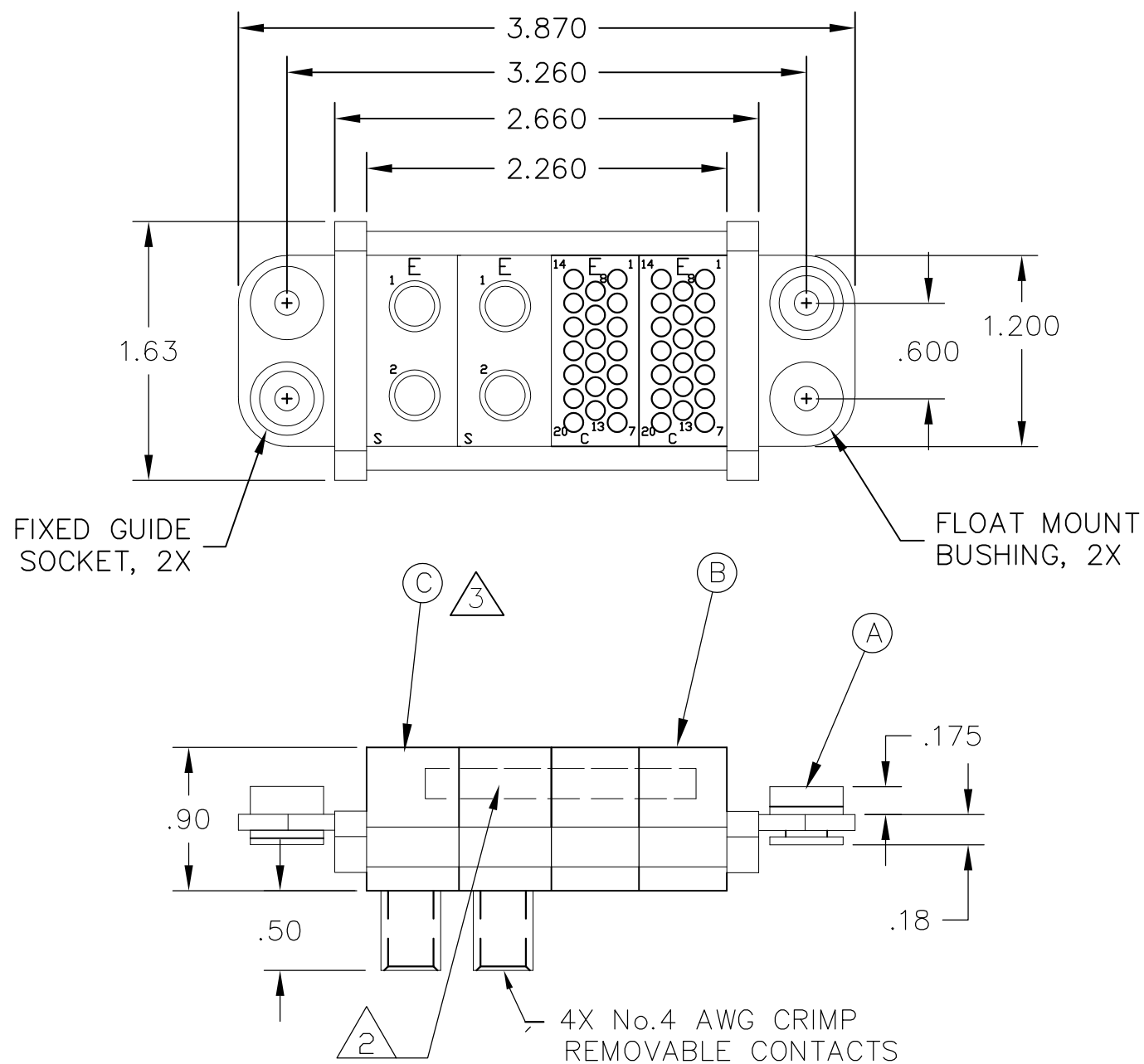
2. ITEMS PROVIDED TO THIS SPECIFICATION TO BE PERMANENTLY IDENTIFIED PER THE FOLLOWING IDENTIFIER:

TYCO PART NUMBER DATE CODE (e.g. 0212)
 XXXXXXXX-X XXXX

YEAR WEEK

3. MODULES NOTED ARE CRIMP REMOVABLE STYLE. REMOVABLE CONTACTS ITEM D WILL BE PACKAGED AND SHIPPED LOOSE WITH THE CONNECTOR ASSEMBLY.

4. MOUNTING FLANGES BUSHING ACCEPT 6/32 SCREW (Ø.156 CLEARANCE HOLE, FLOAT MOUNT) OR 8/32 SCREW (Ø.173 CLEARANCE HOLE, FIXED MOUNT), USER SUPPLIED.

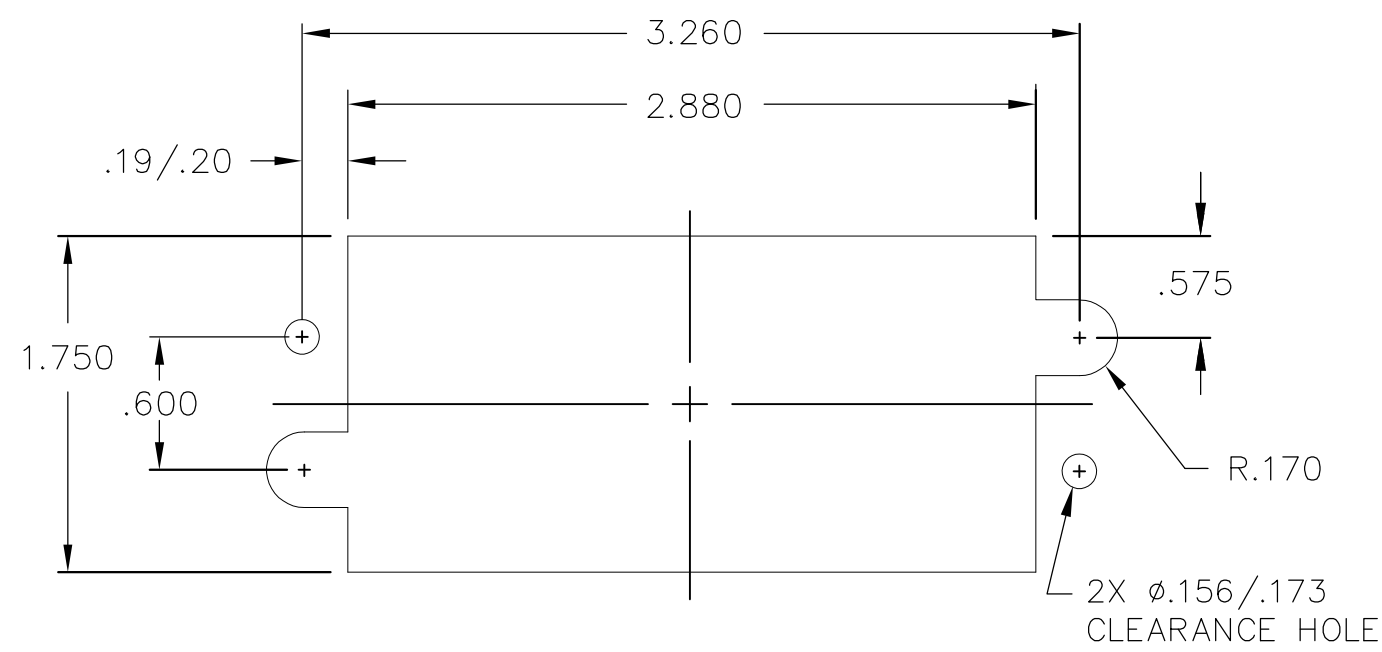


| | | | |
|----|-------------|------------------------------------|------|
| 4 | 6648432-1 | SOCKET CONTACT, No. 4 CRIMP BARREL | D |
| 2 | 1648456-1 | MODULE S | C |
| 2 | 1648468-1 | MODULE C | B |
| 2 | 6648252-1 | END CAP, GUIDE SOCKET, FLOAT | A |
| -1 | PART NUMBER | DESCRIPTION | ITEM |

| | | | | |
|--|--|----------------------------------|---|--|
| THIS DRAWING IS A CONTROLLED DOCUMENT. | | DWN R.GRZYBOWSKI 25APR2007 | Tyco Electronics Corporation Harrisburg, PA 17105-3608 | |
| DIMENSIONS: INCHES | | CHK D.ORRIS 25APR07 | NAME S.FLICKINGER | |
| TOLERANCES UNLESS OTHERWISE SPECIFIED: | | APVD S.FLICKINGER 25APR07 | PRODUCT SPEC - | |
| 0 PLC ± - | | APPLICATION SPEC - | | |
| 1 PLC ± - | | SIZE A3 | | |
| 2 PLC ± .02 | | CAGE CODE 00779 | | |
| 3 PLC ± .010 | | DRAWING NO G-6646114 | | |
| 4 PLC ± - | | RESTRICTED TO - | | |
| ANGLES ± - | | SCALE 1:1 | | |
| FINISH - | | SHEET 1 OF 2 | | |
| MATERIAL - | | REV A | | |
| | | CUSTOMER DRAWING | | |

THIS DRAWING IS UNPUBLISHED. RELEASED FOR PUBLICATION
 © COPYRIGHT - BY TYCO ELECTRONICS CORPORATION. ALL RIGHTS RESERVED.

| | | | | | | | |
|-----|------|-----------|-----|-------------|------|-----|------|
| LOC | DIST | REVISIONS | | | | | |
| GP | 00 | P | LTR | DESCRIPTION | DATE | DWN | APVD |
| | | | | SEE SHEET 1 | | | |



SOCKET PANEL MOUNT CUTOUT
 SCALE: NONE



| | | | | | | | | | | | | | | | | | | |
|---|--------|------------------|--------------|-----------|---|---------------|-------|-------|--------|-------|-----|--------|-----|--------------|--|------|--|--|
| THIS DRAWING IS A CONTROLLED DOCUMENT. | | DWN | R.GRZYBOWSKI | 25APR2007 | Tyco Electronics Corporation Harrisburg, PA 17105-3608 | | | | | | | | | | | | | |
| DIMENSIONS: INCHES | | CHK | D.ORRIS | 25APR07 | NAME | | | | | | | | | | | | | |
| TOLERANCES UNLESS OTHERWISE SPECIFIED: | | APVD | S.FLICKINGER | 25APR07 | SOCKET CONNECTOR DOMINO W/ PANEL CUT-OUT | | | | | | | | | | | | | |
| <table border="1"> <tr><td>0 PLC</td><td>± -</td></tr> <tr><td>1 PLC</td><td>± -</td></tr> <tr><td>2 PLC</td><td>± .02</td></tr> <tr><td>3 PLC</td><td>± .010</td></tr> <tr><td>4 PLC</td><td>± -</td></tr> <tr><td>ANGLES</td><td>± -</td></tr> </table> | | 0 PLC | ± - | 1 PLC | ± - | 2 PLC | ± .02 | 3 PLC | ± .010 | 4 PLC | ± - | ANGLES | ± - | PRODUCT SPEC | | SIZE | | |
| 0 PLC | ± - | | | | | | | | | | | | | | | | | |
| 1 PLC | ± - | | | | | | | | | | | | | | | | | |
| 2 PLC | ± .02 | | | | | | | | | | | | | | | | | |
| 3 PLC | ± .010 | | | | | | | | | | | | | | | | | |
| 4 PLC | ± - | | | | | | | | | | | | | | | | | |
| ANGLES | ± - | | | | | | | | | | | | | | | | | |
| MATERIAL | | APPLICATION SPEC | | CAGE CODE | DRAWING NO | RESTRICTED TO | | | | | | | | | | | | |
| FINISH | | WEIGHT | | A3 | 00779 | C-6646114 | | | | | | | | | | | | |
| CUSTOMER DRAWING | | | | SCALE | SHEET | REV | | | | | | | | | | | | |
| | | | | 1:1 | 2 OF 2 | A | | | | | | | | | | | | |

单击下面可查看定价，库存，交付和生命周期等信息

[>>TE Connectivity\(泰科\)](#)