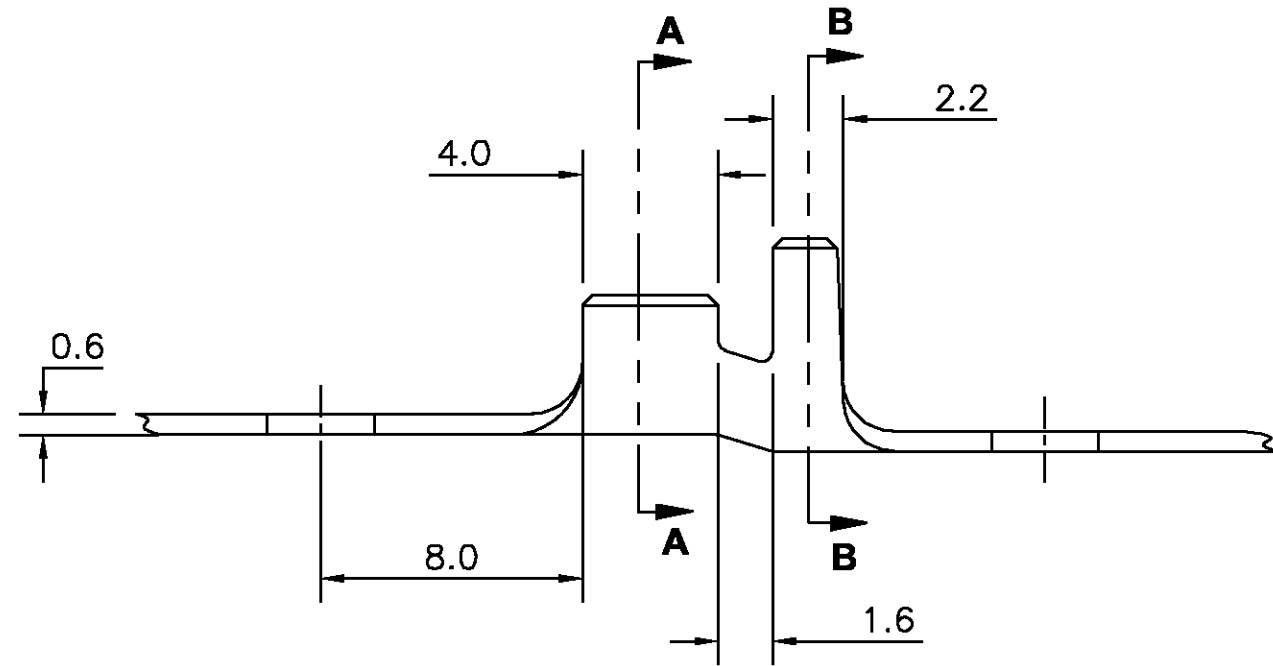
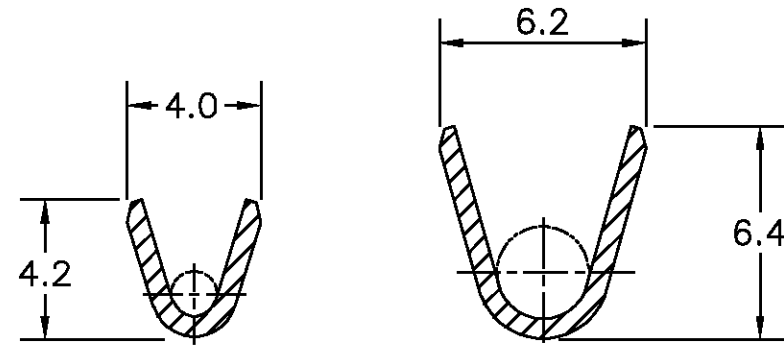
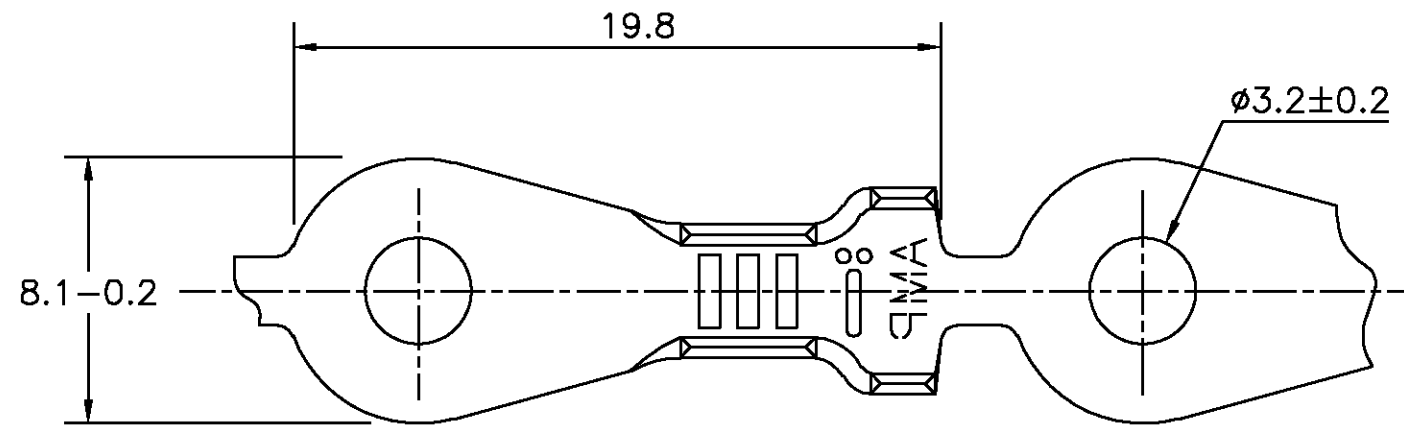


THIS DRAWING IS UNPUBLISHED. RELEASED FOR PUBLICATION
 © COPYRIGHT BY TYCO ELECTRONICS CORPORATION. ALL INTERNATIONAL RIGHTS RESERVED.

LOC	DIST	REVISIONS			
P	LTR	DESCRIPTION	DATE	DWN	APVD
AP	-				
	B2	REVISED BY ECO-10-006013	31MAR2010	NCL	MBG



△-OBSOLETE PARTS: OBSOLETE CIS STREAMLINING PER D.RENAUD/D.SINISI

RAW MAT'L No	Finish	Material	Part Number
—	ESTANHADO / TIN PLATED	BRONZE FOSF. / PHOSP. BR.	880623-4
—	-----/-----	BRONZE FOSF. / PHOSP. BR.	880623-3
—	ESTANHADO / TIN PLATED	LATÃO / BRASS	880623-2
—	-----/-----	LATÃO / BRASS	880623-1

THIS DRAWING IS A CONTROLLED DOCUMENT.		DWN NCLAPRESA 31MAR10	Tyco Electronics Corporation São Paulo, Brasil	
DIMENSIONS: mm		CHK MBGODOY 31MAR10	Tyco Electronics	
TOLERANCES UNLESS OTHERWISE SPECIFIED: mm		APVD MBGODOY 31MAR10	NAME RING TONGUE	
0 PLC ± - 1 PLC ± 0,3 2 PLC ± - 3 PLC ± - 4 PL 0mm ± - ANGLES ± 1°		PRODUCT SPEC	SIZE A3	
WIRE RANGE: >1,0 - 2,5 (mm ²)		APPLICATION SPEC	CAGE CODE 00779	DRAWING NO C-880623
INSULATION RANGE: 2,7 - 4,0 φ mm		WEIGHT	RESTRICTED TO	—
MATERIAL SEE TABLE		CUSTOMER DRAWING		SCALE 5:1
FINISH SEE TABLE		SHEET 1 of 1		REV B2

CAD
DO NOT REVISE
EXCEPT BY CAD

单击下面可查看定价，库存，交付和生命周期等信息

[>>TE Connectivity\(泰科\)](#)