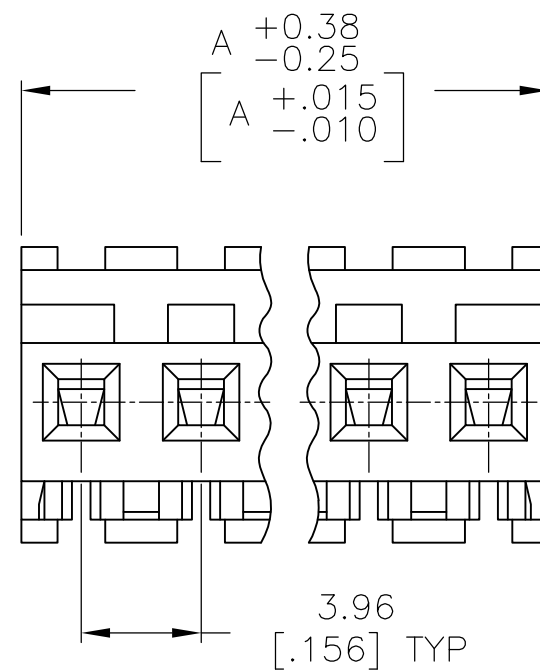
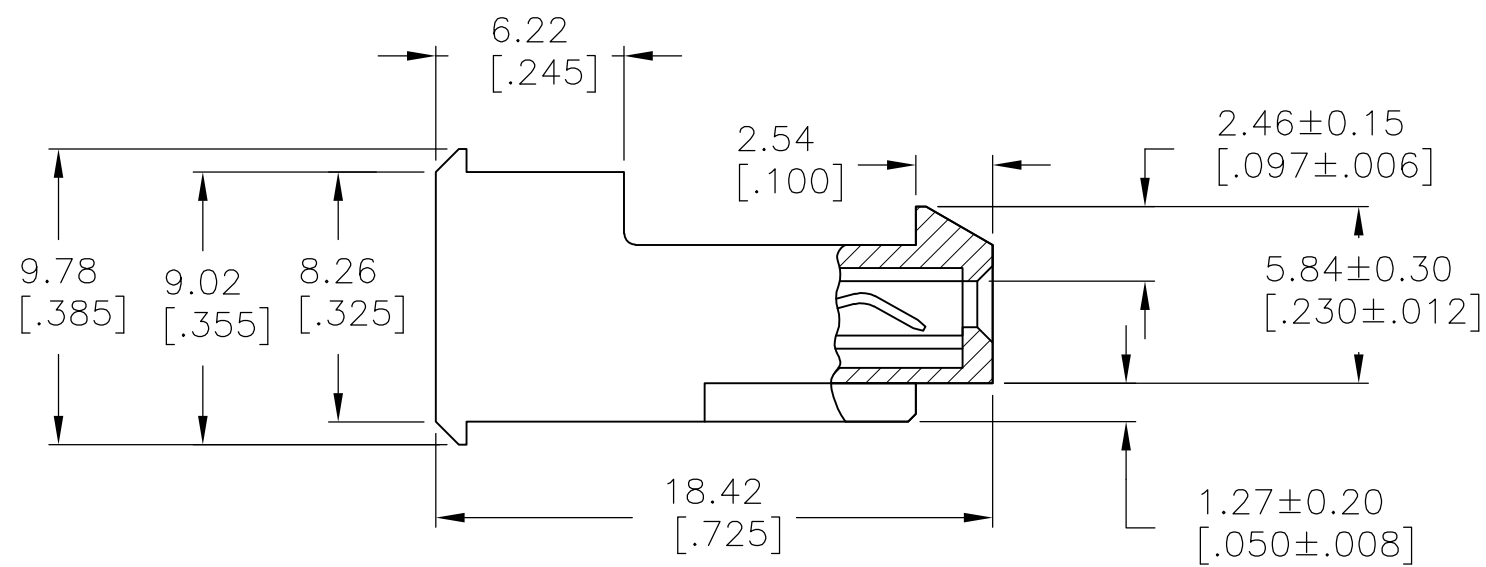
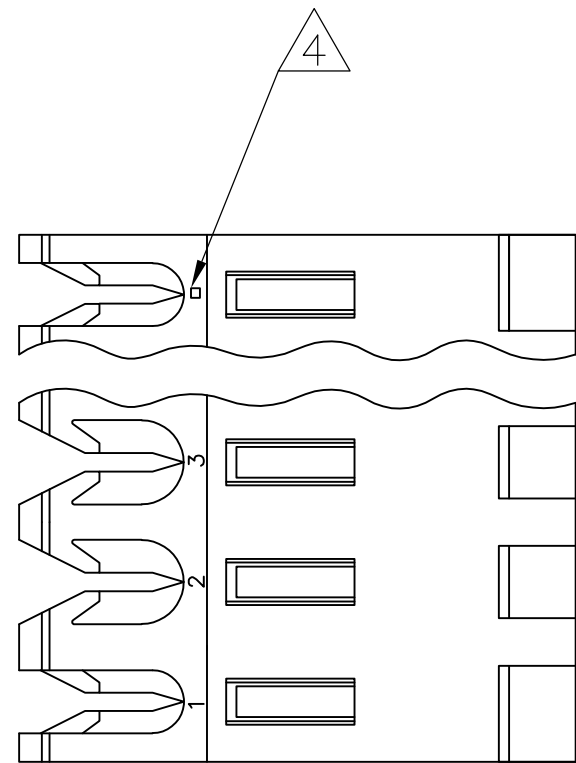


THIS DRAWING IS UNPUBLISHED. RELEASED FOR PUBLICATION
 © COPYRIGHT - By - TE CONNECTIVITY ALL RIGHTS RESERVED.

LOC	DIST	REVISIONS					
CM	00	P	LTR	DESCRIPTION	DATE	DWN	APVD
		AA2		REVISED PER ECR-15-006687	21OCT2015	NK	NL



1 MATERIAL: CONNECTOR - NYLON UL94V-2 (ORANGE).
 CONTACTS - 0.00076[.000030] GOLD THK OR 0.00008[.000003] MIN THK GOLD FLASH OVER 0.00068[.000027] THK PALLADIUM NICKEL, PER TE CONNECTIVITY'S DISCRETION. IN CONTACT AREA WITH BRIGHT TIN-LEAD FOR -2 THRU -28, MATTE WHISKER MITIGATED TIN FOR 3-641227-2 THRU 5-641227-4 OVER NICKEL UNDERPLATE.

2 CONTACTS ACCEPT 18 AWG WIRE WITH 2.41[.095] MAX INSULATION DIAMETER.

3 CONTACTS MUST ACCEPT 1.14±0.03 [.045±.001] SQUARE POST AND REMAIN LOCKED IN POSITION.

4 IDENTIFICATION NUMBER FOR LAST CIRCUIT MAY NOT APPEAR ON ALL ASSEMBLIES.

5 DIMENSIONS IN BRACKETS ARE IN INCHES.

6 HOUSING FEATURES ARE: FEED-THRU WITH LOCKING RAMP.

7 OBSOLETE PARTS: OBSOLETE CIS STREAMLINING PER D.RENAUD/D.SINISI

95.10 [3.744]	24	5-641227-4
91.14 [3.588]	23	5-641227-3
87.17 [3.432]	22	5-641227-2
83.21 [3.276]	21	5-641227-1
79.25 [3.120]	20	5-641227-0
75.29 [2.964]	19	4-641227-9
71.32 [2.808]	18	4-641227-8
67.36 [2.652]	17	4-641227-7
63.40 [2.496]	16	4-641227-6
59.44 [2.340]	15	4-641227-5
55.47 [2.184]	14	4-641227-4
51.51 [2.028]	13	4-641227-3
47.55 [1.872]	12	4-641227-2
43.59 [1.716]	11	4-641227-1
39.62 [1.560]	10	4-641227-0
35.66 [1.404]	9	3-641227-9
31.70 [1.248]	8	3-641227-8
27.74 [1.092]	7	3-641227-7
23.77 [.936]	6	3-641227-6
19.81 [.780]	5	3-641227-5
15.85 [.624]	4	3-641227-4
11.89 [.468]	3	3-641227-3
7.92 [.312]	2	3-641227-2
95.10 [3.744]	24	2-641227-4
91.14 [3.588]	23	2-641227-3
87.17 [3.432]	22	2-641227-2
83.21 [3.276]	21	2-641227-1
79.25 [3.120]	20	2-641227-0
75.29 [2.964]	19	1-641227-9
71.32 [2.808]	18	1-641227-8
67.36 [2.652]	17	1-641227-7
63.40 [2.496]	16	1-641227-6
59.44 [2.340]	15	1-641227-5
55.47 [2.184]	14	1-641227-4
51.51 [2.028]	13	1-641227-3
47.55 [1.872]	12	1-641227-2
43.59 [1.716]	11	1-641227-1
39.62 [1.560]	10	1-641227-0
35.66 [1.404]	9	641227-9
31.70 [1.248]	8	641227-8
27.74 [1.092]	7	641227-7
23.77 [.936]	6	641227-6
19.81 [.780]	5	641227-5
15.85 [.624]	4	641227-4
11.89 [.468]	3	641227-3
7.92 [.312]	2	641227-2

SUPERCEDED
 OBSOLETE
 SUPERCEDED
 OBSOLETE
 SUPERCEDED
 OBSOLETE
 SUPERCEDED
 OBSOLETE

DIM A	NO OF CIRCUITS	PART NO
-------	----------------	---------

THIS DRAWING IS A CONTROLLED DOCUMENT.

DWN B. LEWIS 12 FEB 91	 TE Connectivity MTA-156 CONNECTOR ASSEMBLY, 18 AWG, STANDARD					
CHK R. SWING 12 FEB 91						
APVD D. CLARK 20 FEB 91						
PRODUCT SPEC 108-1051						
APPLICATION SPEC 114-1020	SIZE A2	CAGE CODE 00779	DRAWING NO C-641227	RESTRICTED TO -		
MATERIAL 1	FINISH 1	WEIGHT -	CUSTOMER DRAWING	SCALE 4:1	SHEET 1 OF 1	REV AA2

单击下面可查看定价，库存，交付和生命周期等信息

[>>TE Connectivity\(泰科\)](#)