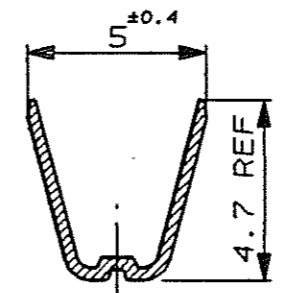
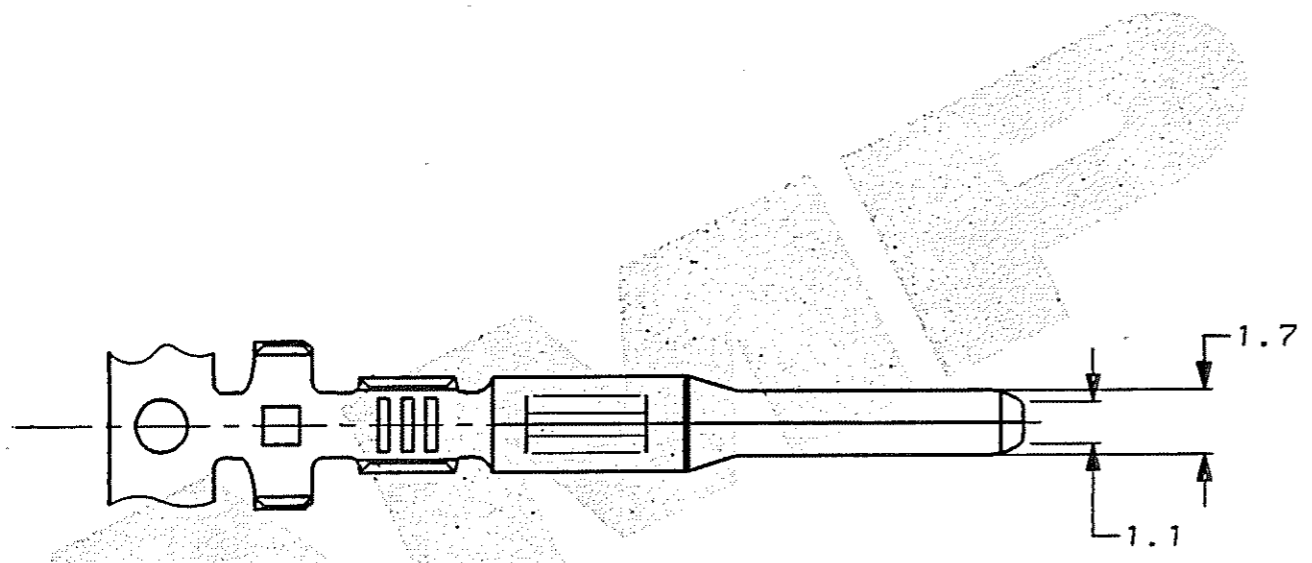
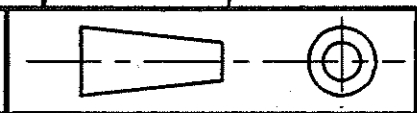


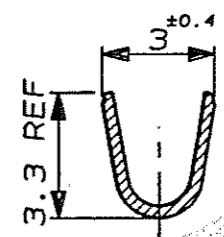
C.A.D. FILE CODE
C345263

DO NOT SCALE

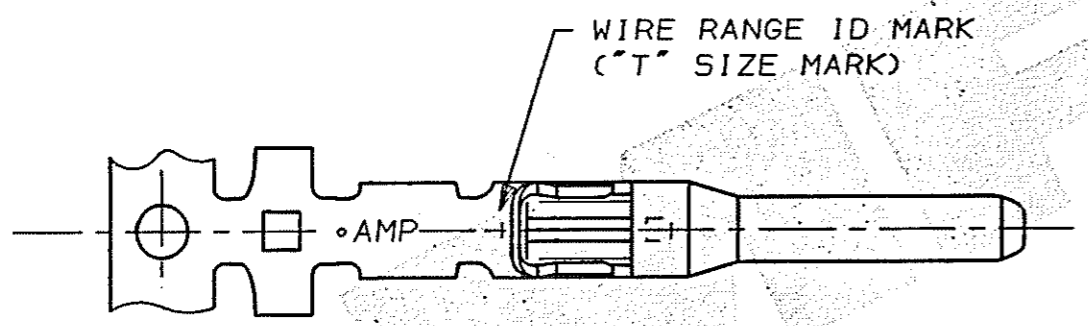
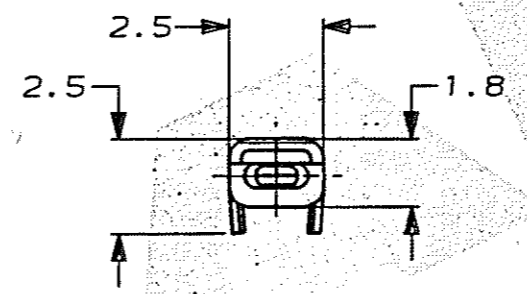
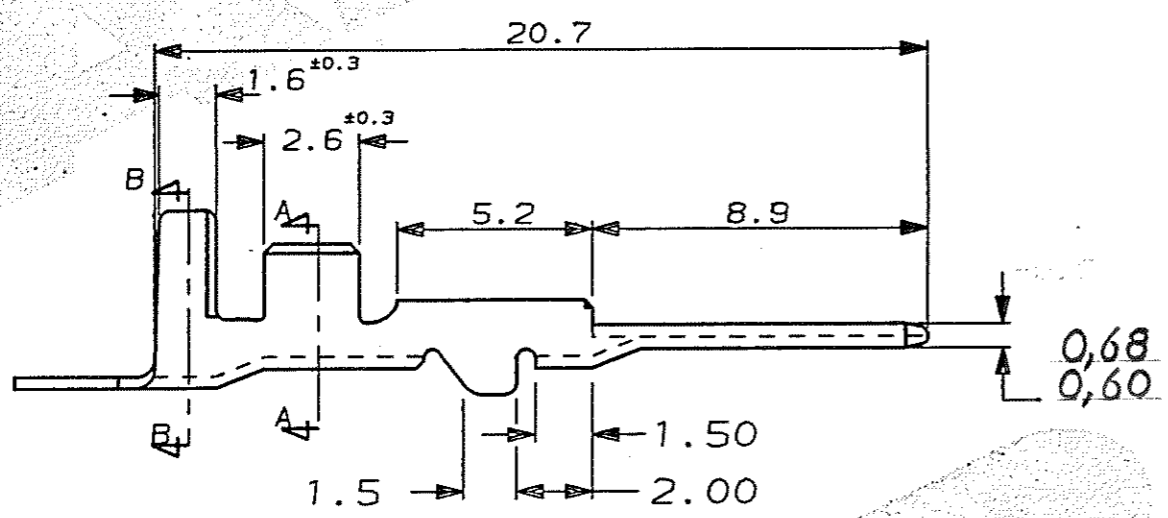
DIMENSIONS IN MM.



SECT B-B



SECT A-A



WIRE RANGE ID MARK
("T" SIZE MARK)

NOTE

- 1. WIRE DETAILS : 2.00mm² , 2.4-2.7 INS. DIA.
- 2. SIMILAR TO PART NUMBER 175191.

PRE-TIN FINISH		BRASS MATERIAL		345263-1 PART NUMBER	
CUSTOMER DWG FOR REFERENCE ONLY			©COPYRIGHT 1991 BY AMP OF GREAT BRITAIN LTD. ALL INTERNATIONAL RIGHTS RESERVED. ALL PRODUCTS MAY BE COVERED BY BRITISH AND FOREIGN PATENTS AND/OR PATENTS PENDING.		
TOLERANCES UNLESS OTHERWISE STATED :		DR. D.R. TERRY		16 OCT 1991	
DEC ± 0.5		CH. M MISTRY		APP. M MISTRY	
ANGLES ± 1°		TE Connectivity			
NAME					
0.70 SERIES TAB CONTACT, MULTI-LOCK					
E	BB	ECR-14-007031	27MAY2014	SCALE 5/1	LOC E
REV	APPROVED	ECN	DATE	SIZE A3	DWG.No. C345263
				REV E	SHEET 1/1

单击下面可查看定价，库存，交付和生命周期等信息

[>>TE Connectivity\(泰科\)](#)