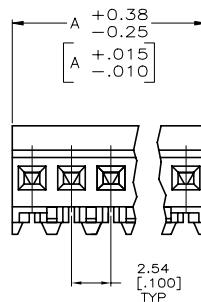
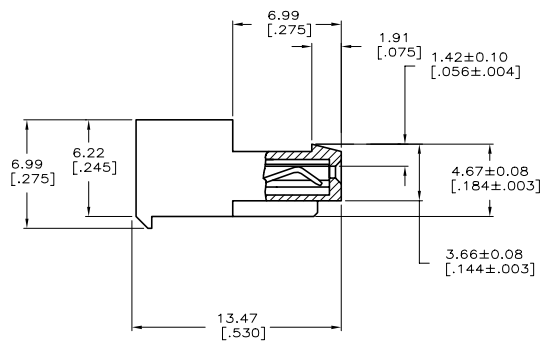
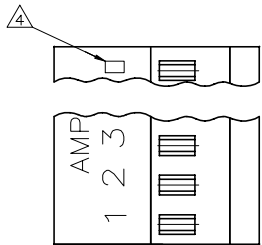


LOC	DATE	REVISIONS
CM	00	
REV	DATE	BY
P	REVISED PER ECR-20-000721	04MAR2020 PC SW

- 1 MATERIAL: CONNECTOR-NYLON UL94V-2 (WHITE).  
 CONTACTS-0.30 [.012] THICK COPPER ALLOY  
 BRIGHT TIN-LEAD 0.00203 [.000080] MINIMUM THICK FOR CONTACTS  
 641535-2 THRU 641535-6,  
 MATTE WHISKER MITIGATED TIN PLATE 0.00203 [.000080] MINIMUM THICK OVER  
 NICKEL UNDERPLATE FOR CONTACTS 3-641535-2 THRU 3-641535-6.
- 2. CONTACTS ACCEPT 24 AWG WIRE WITH 1.52 [.060] MAXIMUM INSULATION DIAMETER.
- 3. CONTACTS MUST ACCEPT 0.36-0.51 [.014-.020] SQUARE OR ROUND POST AND  
 REMAINED LOCKED IN POSITION.
- 4 IDENTIFICATION NUMBER FOR LAST CIRCUIT MAY NOT APPEAR ON ALL ASSEMBLIES.
- 5. DIMENSIONS IN BRACKETS ARE IN INCHES.
- 6. HOUSING FEATURES ARE: CLOSED END WITH LOCKING RAMP & LED CONTACT.
- 7 OBSOLETE PARTS: OBSOLETE CIS STREAMLINING PER D.RENAUD/D.SINISI
- 8 OBSOLETE PARTS



LEAD FREE	DIM A	NO.OF POSN	ASSEMBLY
	15.24 [.600]	6	3-641535-6
	12.70 [.500]	5	3-641535-5
	7.62 [.300]	3	3-641535-3
	5.08 [.200]	2	3-641535-2

CONTAINS LEAD	DIM A	NO.OF POSN	ASSEMBLY
8 SUPERSEDED	15.24 [.600]	6	<del>3-641535-6</del>
7 SUPERSEDED	12.70 [.500]	5	<del>3-641535-5</del>
7 SUPERSEDED	7.62 [.300]	3	<del>3-641535-3</del>
OBSOLETE	5.08 [.200]	2	<del>3-641535-2</del>

THIS DRAWING IS A CONTROLLED DOCUMENT.		DRG: S. HOOVER 10-DEC-2004	STE TE Connectivity	
DIMENSIONS: mm (INCHES)		CHK: B. BOSSI 10-DEC-2004	MTA-100 CONNECTOR ASSEMBLY, 24 AWG, FOR .014 TO .020 POST, SPECIAL	
DRAWN BY: S. HOOVER		APP'D: B. BOSSI 10-DEC-2004	PRODUCT SPEC: 108-1050	
CHECKED BY: S. HOOVER		APPROV: S. HOOVER 10-DEC-2004	APPLICATION SPEC: 114-1019	
MATERIAL: NYLON		FINISH: 1	SIZE: A1	SCALE: 5:1
WEIGHT: 1		REV: 1	RESTRICTED TO: CUSTOMER DRAWING	

单击下面可查看定价，库存，交付和生命周期等信息

[>>TE Connectivity\(泰科\)](#)