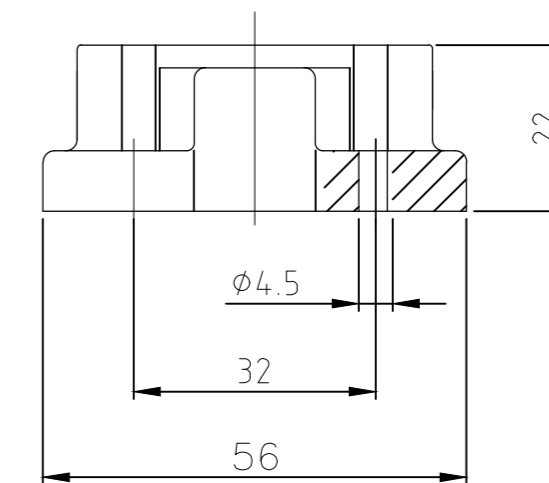
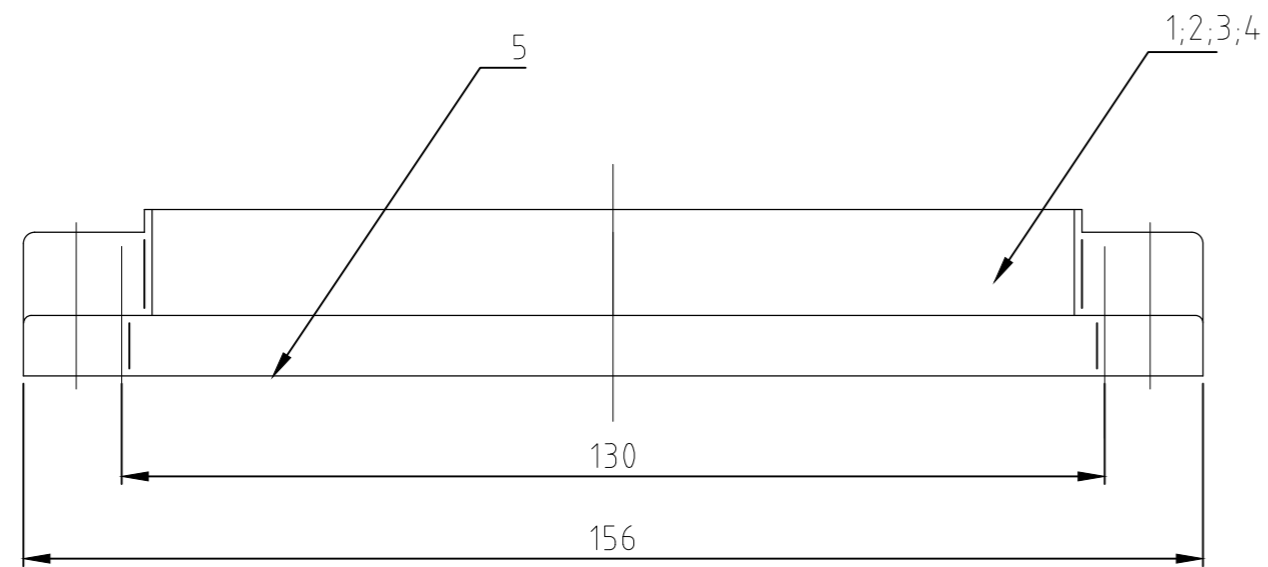
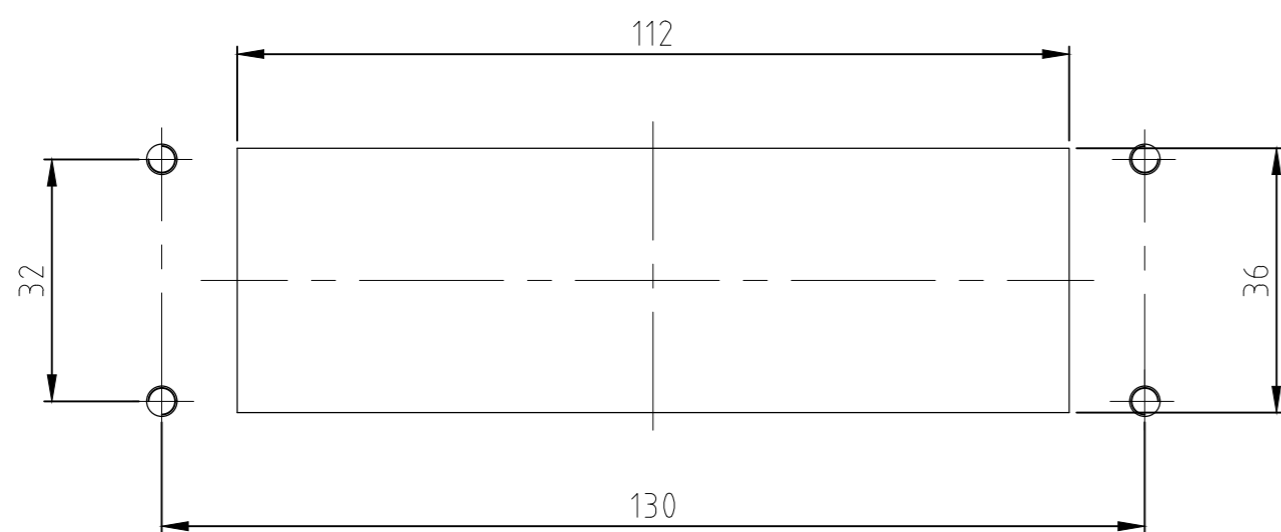


THIS DRAWING IS UNPUBLISHED. RELEASED FOR PUBLICATION
 © COPYRIGHT - TE Connectivity ALL RIGHTS RESERVED.

REVISIONS					
P	LTR	DESCRIPTION	DATE	DWN	APVD
A6		REVISED PER ECR-17-014011	24JAN2018	NG	MKO



Panel Cut Out



- Notes:
- 1 Material: Housing: aluminium diecasting alloy
Seals: Neoprene conductive
 - 2 Surface: Varnish- grey
yellow chromium plated +
Varnish black
 - 3 Varnish on the inside not necessarily

- Bemerkungen:
- 1 Material: Gehäuse: Alu-Druckguß-Legierung
Dichtungen: Neoprene leitfähig
 - 2 Oberfläche: Lackierung - grau
gelb chromatiert +
Lackierung schwarz
 - 3 Lackierung im Gehäuseinnere ist nicht notwendig

QTY	DESCRIPTION / BENENNUNG	MATERIAL	SURFACE/OBERFLÄCHE	COLOR/FARBE	ITEM NO.	REMARKS / BEMERKUNGEN
1	0-Ring Bg8	Neoprene	-	black/schwarz	5	Conductive
1	Bulkhead housing EMV-K Bg8	Aluminium/Alu	yellow chromated	black/schwarz	4	
1	Bulkhead housing EMV Bg8	Aluminium/Alu	-	grey/grau	3	
1	Bulkhead housing EMV Bg8	Aluminium/Alu	-	unvarnished	2	
1	Bulkhead housing EMV Bg8	Aluminium/Alu	-	white aluminum	1	

EMV.24/64-AG	EMV-K.24/64-AG	EMV.24/64-AG	EMV.24/64-AG	EMV.24/64-AG	EMV.24/64-AG	EMV.24/64-AG
1	1	1	1	1	1	1
0	3	4	5	3	5	0-2 0-1

THIS DRAWING IS A CONTROLLED DOCUMENT.		DWN	01.08.2000	 TE Connectivity Surface mounted housing bottom entry EMV Anbaugehäuse EMV.24/64-AG			
DIMENSIONS: mm		CHK	01.08.2000				
TOLERANCES UNLESS OTHERWISE SPECIFIED:		APVD	-				
0 PLC ± - 1 PLC ± - 2 PLC ± - 3 PLC ± - 4 PLC ± - ANGLES ± -		PRODUCT SPEC	-				
MATERIAL		APPLICATION SPEC	-	SIZE	CAGE CODE	DRAWING NO	RESTRICTED TO
FINISH		WEIGHT	-	A2	00779	C=1102760	-
ORDERING TEXT/BESTELLTEXT		CUSTOMER DRAWING		SCALE	1:1	SHEET	1 of 1
				REV	A6		

单击下面可查看定价，库存，交付和生命周期等信息

[>>TE Connectivity\(泰科\)](#)