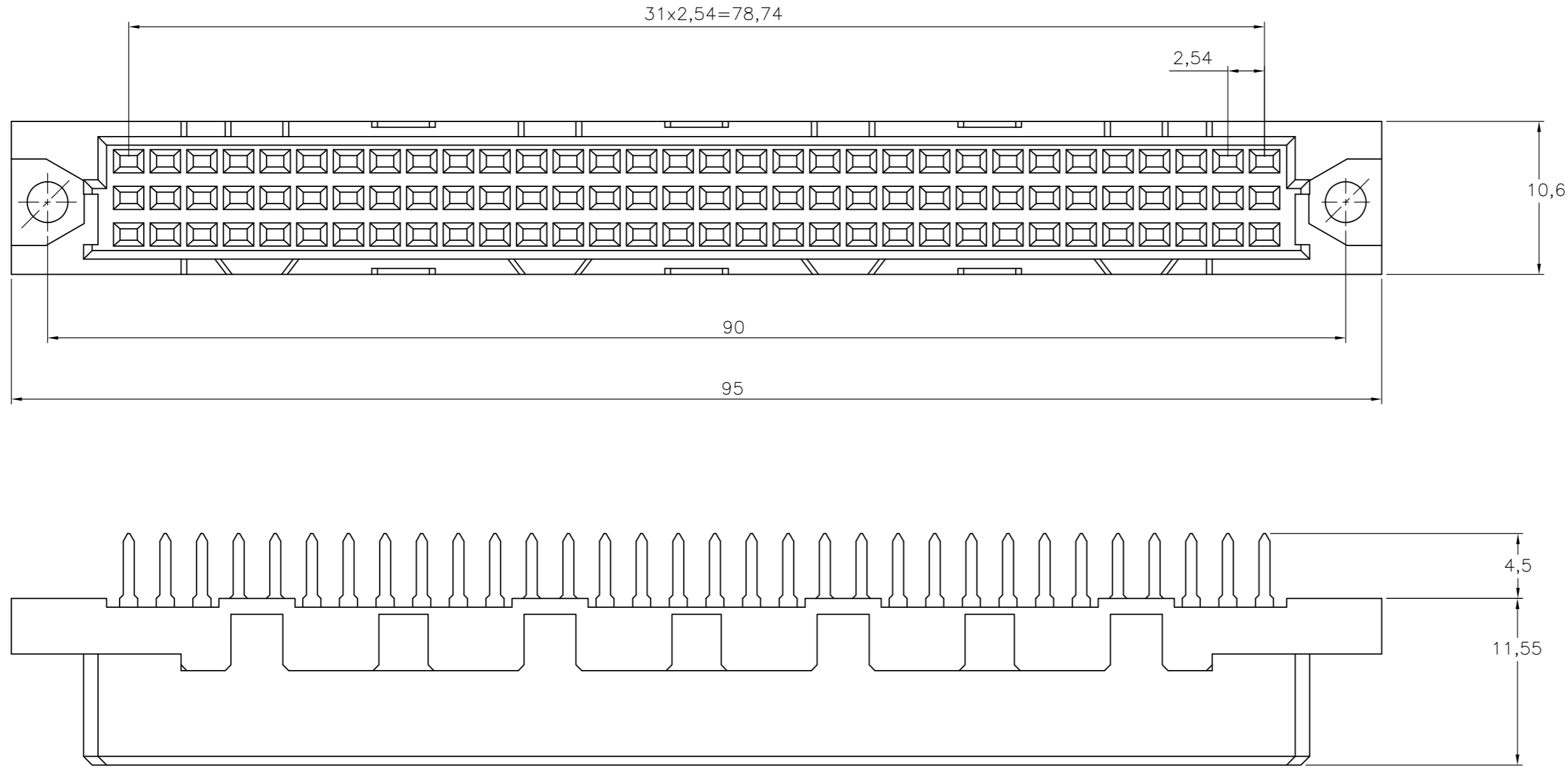


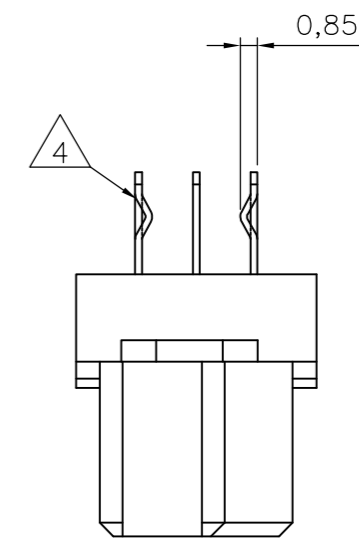
THIS DRAWING IS UNPUBLISHED. RELEASED FOR PUBLICATION
 © COPYRIGHT - By - ALL RIGHTS RESERVED.

LOC	DIST	REVISIONS			
P	LTR	DESCRIPTION	DATE	DWN	APVD
H	-	A	INITIAL RELEASE	15MAR11	RK MKO



NOTE:

- 1 HOUSING: GLASS FILLED THERMOPLASTIC
CONTACTS: COPPER ALLOY
- 2 PLATING:
CONTACT AREA: PERFORMANCE LEVEL 2 ACC. TO DIN 41612
SOLDERING AREA: TIN OVER NICKEL
- 3 CONTACT ARRANGEMENTS:
AN ASTERISK "X" DENOTES A SIGNAL CONTACT.
AN ASTERISK "⊗" DENOTES KINKED A SIGNAL CONTACT.
- 4 KINKED POSTS
- 5. SOLDER POSTS SUITABLE FOR 1,0 NOM. P.C.B. HOLES
- 6. CONNECTOR PRINTED WITH PARTNUMBER AND DATECODE



ROW	POS	3																																
		1	2	3	4	5	6	7	8	9	10	11	12	13	14	15	16	17	18	19	20	21	22	23	24	25	26	27	28	29	30	31	32	
a		⊗	x	x	x	x	x	x	x	x	x	x	x	x	x	x	x	x	x	x	x	x	x	x	x	x	x	x	x	x	x	x	x	⊗
b		x	x	x	x	x	x	x	x	x	x	x	x	x	x	x	x	x	x	x	x	x	x	x	x	x	x	x	x	x	x	x	x	x
c		⊗	x	x	x	x	x	x	x	x	x	x	x	x	x	x	x	x	x	x	x	x	x	x	x	x	x	x	x	x	x	x	x	⊗

THIS DRAWING IS A CONTROLLED DOCUMENT.		DWN	15MAR11	WITH		2	1	2173047-4	
DIMENSIONS: mm		CHK	07APR11	4		FINISH	MATERIAL	TE PARTNUMBER	
TOLERANCES UNLESS OTHERWISE SPECIFIED:		APVD		NAME					
0 PLC ± -		07APR11		STEFAN HABERSTROH		96P.IEC-C FEM.CONN.			
1 PLC ± -		PRODUCT SPEC		APPLICATION SPEC		ACC. DIN 41612 WITH SOLDER POSTS			
2 PLC ± -		WEIGHT		SIZE		CAGE CODE		DRAWING NO	
3 PLC ± -		-		A2		00779		C=2173047	
4 PLC ± -		CUSTOMER DRAWING		SCALE		SHEET		REV	
ANGLES ± -		-		NTS		1 of 1		A	
FINISH		-		-		-		-	

单击下面可查看定价，库存，交付和生命周期等信息

[>>TE Connectivity\(泰科\)](#)