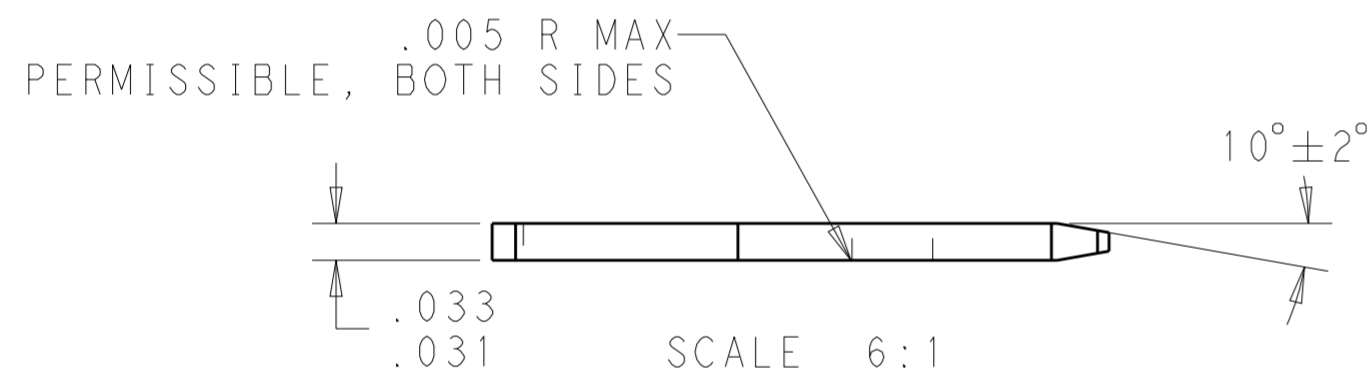
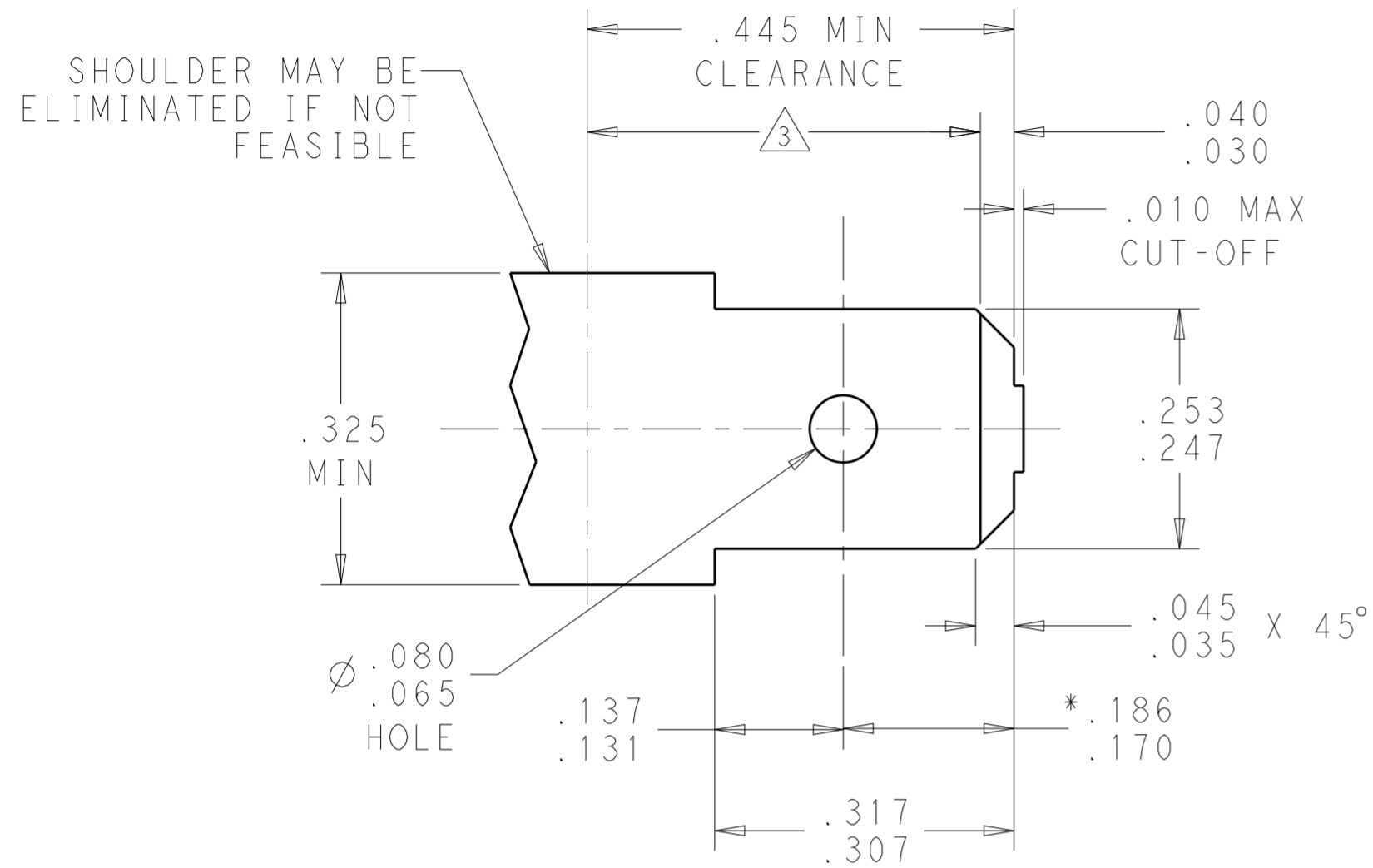
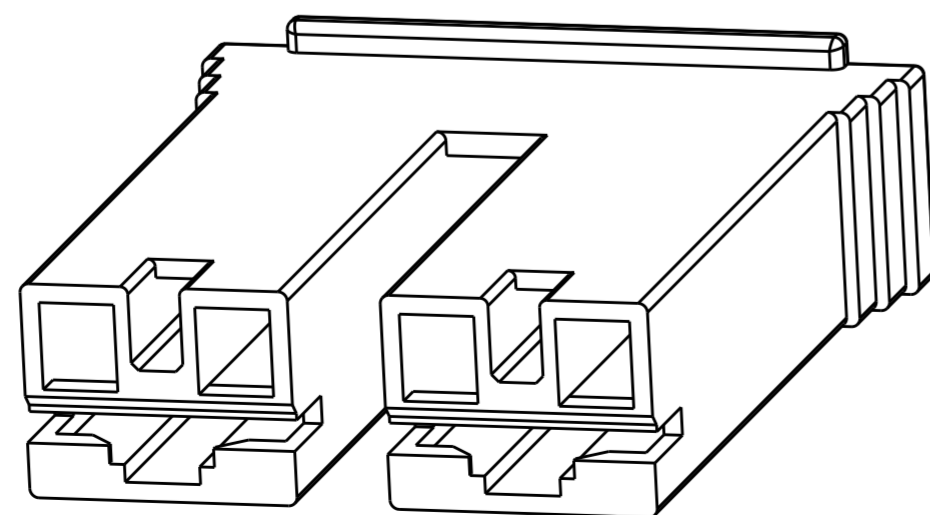


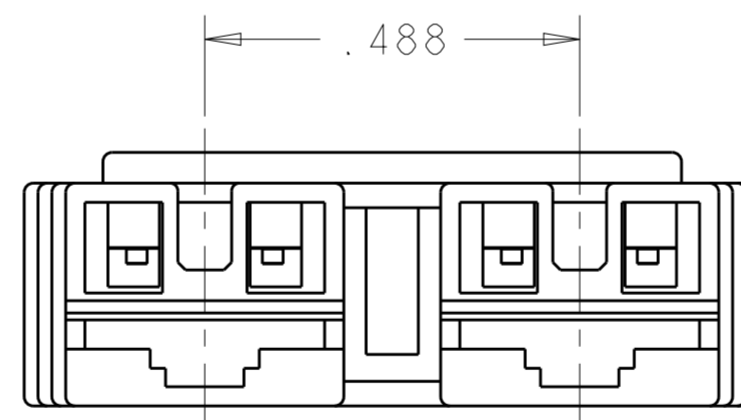
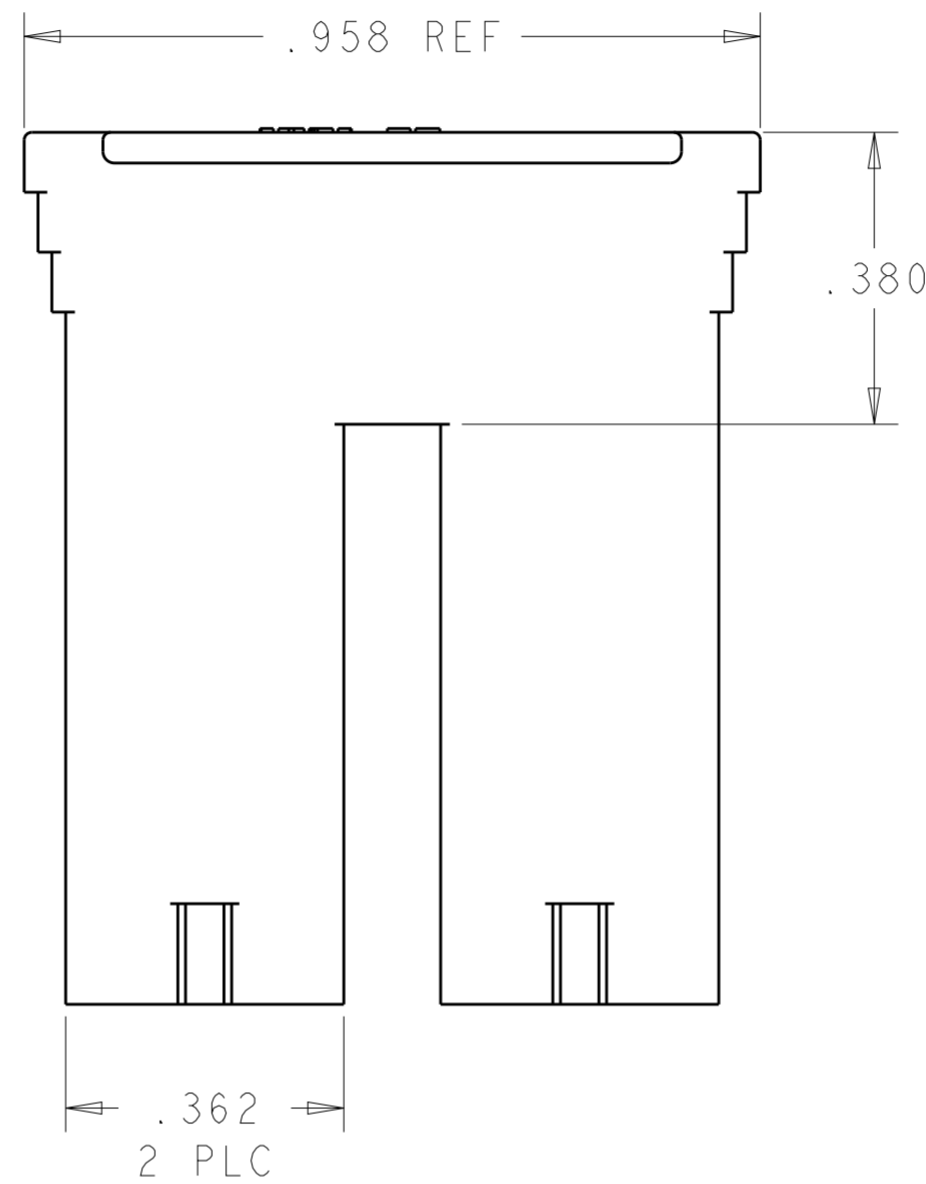
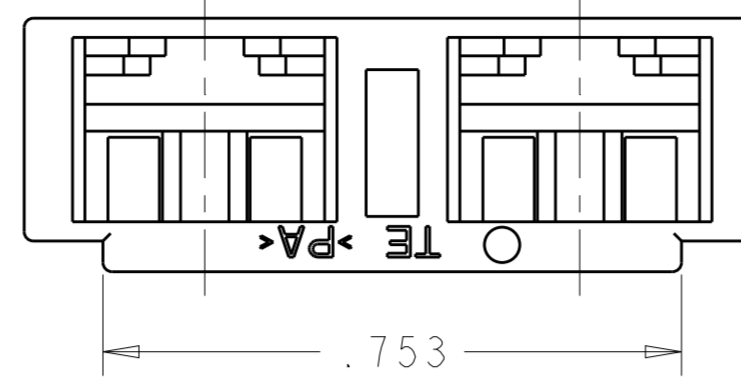
SUGGESTED MATING TAB



- 1 MATL: 1/2H BRASS OR NICKEL PL STEEL
- 2 NO BURRS PERMISSBLE AT HOLE
- △ MUST BE FLAT WITHIN .003 OVER THIS LENGTH
- 4 TIN PLATING IS REQUIRED ON BRASS WHEN TERMINAL TEMP IS OVER 225° F.
- 5 HOLE MUST BE SYMMETRICAL ABOUT TAB CENTERLINE WITHIN .003
- * TO BE USED ONLY WHEN SHOULDER IS ELIMINATED.

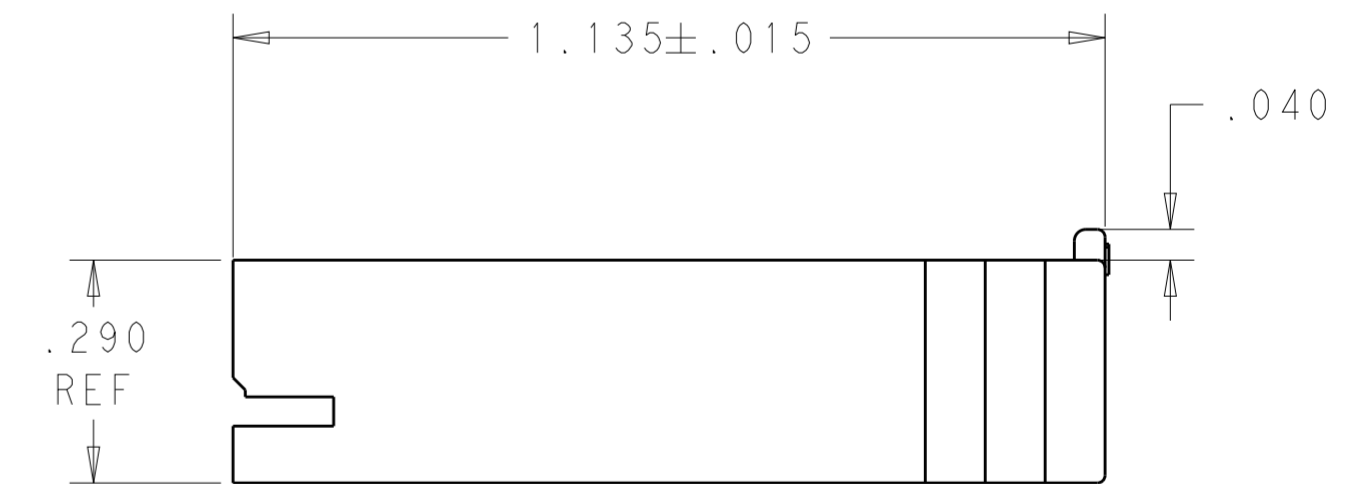


LOC	DIST	REVISIONS			
P	LTR	DESCRIPTION	DATE	DWN	APVD
-	-	A6	REVISED PER ECO-18-011385	23JUL2018	RS DS



1 FOR USE WITH MKII POSITIVE LOCK, LOW INSERTION FORCE FASTON RECEPTACLES AND MOST BUDGET FASTON RECEPTACLES.

△ PRELIMINARY - NOT FOR PRODUCTION



NATURAL	66 Nylon V0 Natural, GWT	1969332-3
NATURAL (WHITE)	66/6 NYLON V0	1969332-2
NATURAL (TRANSLUCENT)	6/6 NYLON V2	△ 1969332-1
COLOR	MATERIAL	PART NO.

THIS DRAWING IS A CONTROLLED DOCUMENT.		DWN JR RUTH 21OCT2009	TE Connectivity	
DIMENSIONS: INCHES		CHK GARY PORTA 21OCT2009		
TOLERANCES UNLESS OTHERWISE SPECIFIED:		APVD GARY PORTA 21OCT2009	NAME HOUSING, RECPT, POSITIVE-LOCK AND STANDARD FASTON, .250 SERIES MKII	
0 PLC ±.1		PRODUCT SPEC 108-5127	SIZE CAGE CODE DRAWING NO RESTRICTED TO	
1 PLC ±.02		APPLICATION SPEC 114-2074	A200779 C-1969332	
2 PLC ±.010		WEIGHT -	SCALE 8:1 SHEET 1 OF 1 REV A6	
3 PLC ±.005				
4 PLC ±.0005				
ANGLES FINISH				
MATERIAL SEE TABLE				
SEE TABLE				

单击下面可查看定价，库存，交付和生命周期等信息

[>>TE Connectivity\(泰科\)](#)